



December 30, 2017

Report of the State Foundation on Culture and the Arts to the 2018 Legislature

**S.C.R. 96 REQUESTING THE ESTABLISHMENT OF AN ALI'I MEMORIAL
ART ADVISORY TASK FORCE.**

TABLE OF CONTENTS

1. Cover Letter with recommendations on the resolution, SCR96
2. Actions: Establishing Criteria
3. Members of the Ali`i Memorial Art Advisory Task Force
4. Meeting Minutes
5. Background information and Research



No. 1 Capitol District
Building 250 South Hotel
Street Second Floor
Honolulu, HI 96813

Governor
David Y. Ige

Comptroller
Roderick K. Becker

Chairperson
Patricia M. Hamamoto

Commissioners
Nalani Brun
Jane Clement
Noelle Kahanu
Ronald Michioka
Clyde Sakamoto
Dean Sakamoto
Karen Tiller Polivka
Sherman Warner

Executive Director
Jonathan Johnson

Telephone
808.586.0300

Fax
808.586.0308

Website
www.hawaii.gov/sfca

December 30, 2017

The Honorable Ronald D. Kouchi
President of the Senate
State Capitol Room 409
415 South Beretania Street
Honolulu, HI 96813

The Honorable Scott K. Saiki
Speaker of the House of Representatives
State Capitol Room 431
415 South Beretania Street
Honolulu, HI 96813

Dear Sirs:

**Report of the State Foundation on Culture and the Arts to the Legislature
S.C.R. 96 Requesting the Establishment of an Ali'i Memorial Art Advisory Task
Force**

I am pleased to report that the Ali'i Memorial Art Advisory Task Force has been established as outlined in the subject resolution and has been meeting regularly since October of 2016. The Task Force has researched existing monuments, developed criteria and identified potential locations in response to the resolution. The following is a brief summary of the Task Forces discussions and findings.

1) Regarding placement of the Spirit of Lili'uokalani statue:

The task force has researched and discussed placement of the Spirit of Lili'uokalani statue and have concluded that the current setting of the Spirit of Lili'uokalani does not best exemplify Her Majesty. The Task Force is reviewing potential locations and settings for the statue which include the present location, fronting the Queen Lili'uokalani Building on Punchbowl Street, and where the Eternal Flame is currently situated on Beretania Street.

The Task Force will continue to work this spring to address the placement of the *Spirit of Lili'uokalani* statue. The University of Hawai'i School of Architecture has agreed to assist by developing design proposals for each of the primary locations and will submit them to the Task Force for review and approval this semester. Once a location and setting is agreed upon, a detailed plan on implementation of the recommendations will be prepared.

2) Regarding commissioning permanent works of art commemorating various Ali'i (7):

The Task Force voted to propose a singular monument be created to honor the Monarchy as a whole rather than creating separate monuments to each of the Ali'i named in the resolution. Possible locations for a monument to the Monarchy are within the Capitol District, Queen Emma's Summer Palace, Diamond Head State Monument and Kaka'ako Makai Gateway Park.

The Ali'i Memorial Art Advisory Task Force will continue to do its work until the Task Force sunsets on June 30, 2018. To date, no events have been planned or executed by the Task Force. Public funding related to the Task Force's work will be from the Works of Art Special Fund and will be administered according to 103-8.5 HRS. We are hopeful for the outcome. If you have any questions, please call me at 586-0301.

Sincerely,

A handwritten signature in blue ink, appearing to read 'Jonathan Johnson', with a stylized, cursive script.

Jonathan Johnson
Executive Director
State Foundation on Culture and the Arts

MAR 11 2016

SENATE CONCURRENT RESOLUTION

REQUESTING THE ESTABLISHMENT OF AN ALI'I MEMORIAL ART ADVISORY
TASK FORCE.

1 WHEREAS, Queen Lili'uokalani was the last monarch of the
2 Hawaiian kingdom; and

3
4 WHEREAS, the Spirit of Lili'uokalani statue depicting Queen
5 Lili'uokalani is located behind the Capitol building and faces
6 away from 'Iolani Palace, where she reigned over the Hawaiian
7 Kingdom until she was deposed; and

8
9 WHEREAS, a depiction of Queen Lili'uokalani should be placed
10 in a royal setting fitting of an ali'i of the Hawaiian Kingdom,
11 which best portrays the leadership and courage Queen
12 Lili'uokalani epitomized as Hawai'i's monarch; and

13
14 WHEREAS, each of the ali'i of the Hawaiian Kingdom should be
15 memorialized; and

16
17 WHEREAS, in order to properly depict the Hawaiian ali'i, the
18 portrayals should follow Hawaiian tradition with the Hawaiian
19 chiefs and rulers attended by kahili and pulo'ulo'u; now,
20 therefore,

21
22 BE IT RESOLVED by the Senate of the Twenty-eighth
23 Legislature of the State of Hawaii, Regular Session of 2016, the
24 House of Representatives concurring, that the Hawai'i State
25 Foundation on Culture and the Arts is requested to establish an
26 Ali'i Memorial Art Advisory Task Force; and

27
28 BE IT FURTHER RESOLVED that the task force is requested to
29 comprise the following:

30
31 (1) The Comptroller, or the Comptroller's designee;



S.C.R. NO. 96

- (2) The Chairperson of the Board of Land and Natural Resources, or the Chairperson's designee;
- (3) The Chairperson of the Hawai'i State Foundation on Culture and the Arts, or the Chairperson's designee;
- (4) The Chairperson of the Board of Trustees of the Office of Hawaiian Affairs, or the Chairperson's designee;
- (5) A member of the Senate, to be designated by the President of the Senate;
- (6) A member of the House of Representatives, to be designated by the Speaker of the House of Representatives; and
- (7) One representative or the respective representative's designee, appointed jointly by the Speaker of the House of Representatives and the President of the Senate, from each of the following organizations: Hui Hanai representing the Queen Lili'uokalani Trust, Royal Order of Kamehameha I, Heirs of Queen Lili'uokalani and Prince Consort John Owen Dominis, Washington Place Foundation, Aha Hui 'O Lili'uokalani Hawaiian Civic Club, Prince Kuhio Hawaiian Civic Club, Pearl Harbor Hawaiian Civic Club, Association of Hawaiian Civic Clubs, and The Friends of 'Iolani Palace, and Mauna'ala; and

BE IT FURTHER RESOLVED that the task force elect a chair from among its members and adopt rules and procedures as needed; and

BE IT FURTHER RESOLVED that the Hawai'i State Foundation on Culture and the Arts administer and provide technical oversight of the task force; and

BE IT FURTHER RESOLVED that the task force hold an initial meeting no later than November 1, 2016; and



BE IT FURTHER RESOLVED that the task force is requested to discuss the following:

- (1) Placement of the Spirit of Lili'uokalani statue to best exemplify her majesty; and
- (2) Commissioning permanent works of art commemorating King Kamehameha I, King Kamehameha II (Liholiho), King Kamehameha III (Kauikeaouli), King Kamehameha IV (Alexander Liholiho), King Kamehameha V (Lot Kapuaiwa), King Lunalilo, King Kalakaua, and Queen Lili'uokalani with their likeness and descriptions and including kahili and pulo'ulo'u as symbols of rank and appropriate lighting for security and enhancement of the art; and

BE IT FURTHER RESOLVED that the task force is requested to submit a report of its findings and recommendations, including a design, necessary appropriation amount, and proposed site for the relocation and repositioning of the Spirit of Lili'uokalani statue, to the Legislature no later than twenty days prior to the convening of the Regular Session of 2018; and

BE IT FURTHER RESOLVED that the task force be dissolved on June 30, 2018; and

BE IT FURTHER RESOLVED that certified copies of this Concurrent Resolution be transmitted to the Comptroller, Chairperson of the Board of Land and Natural Resources, Chairperson of the Hawai'i State Foundation on Culture and the Arts, Chairperson of the Board of Trustees of the Office of Hawaiian Affairs, President of the Senate, Speaker of the House of Representatives, Hui Hanai representing the Queen Lili'uokalani Trust, Royal Order of Kamehameha I, Heirs of Queen Lili'uokalani and Prince Consort John Owen Dominis, Washington Place Foundation, Aha Hui 'O Lili'uokalani Hawaiian Civic Club, Prince Kuhio Hawaiian Civic



S.C.R. NO. 96

1 Club, Pearl Harbor Hawaiian Civic Club, Association of Hawaiian
2 Civic Clubs, The Friends of 'Iolani Palace, and Mauna'ala.
3
4
5

OFFERED BY:

A large, bold, handwritten signature in black ink, appearing to be "Mark", written over a horizontal line.A smaller, handwritten signature in black ink, appearing to be "B", written over a horizontal line.

SUMMARY OF TASK FORCE COMMENTS REGARDING PLACEMENT OF THE SPIRIT OF LILI'UOKALANI STATUE

July 20, 2017

Contextual Relevance

Refers to the way a work of art fits into the fabric of its setting. Some factors that determine contextual relevance are subject matter, historical reference, utility, and socio-cultural attitude.

Pros of current location

The current space lends intimacy between the viewer and the Queen. There is an intimate dialogue that occurs in this location due to its accessibility. It has been observed that people have personal time with the Queen even with the constant pedestrian traffic that occurs throughout the day. Visitors to Hawaii, Native Hawaiians and residents of Hawaii are able to stop and read the text on the plaque and be contemplative. People interact with the statue on a daily basis.

Symbolically, placement of the statue shows that she is embracing the past and future at the same time, with Iolani Palace behind her and the Capitol in front of her. Legislators have to face her and reckon with her when they leave the Capitol grounds. She is keeping guard and keeping sense.

Cons of current location

Placement between the Capitol and Iolani Palace can be seen symbolically as disrespectful. The back gate behind her has since been a retainer gate. When large public events occur, the portable toilets are placed around the statue. It appears to be placed randomly, out of context. Compared to the King Kamehameha statue, you see that it is very well maintained with a strong base.

Staging

Refers to the placement of the work of art and the design of the setting so as to present the work to its best advantage. Factors to be considered include background, foreground, enframement, base, and lighting.

Possibly raise the pedestal to acknowledge her prominence. Raised but also accessible. Closer in this sense. She is a queen, she needs to feel purposeful, inspirational, and accessible. While there is space for staging to honor her and gather for various events, the current staging needs improvement.

SFCA Criteria for Commissioned Works of Art

Contextual Relevance

Contextual relevance refers to the way a work of art fits into the fabric of its setting. Some factors that determine contextual relevance are subject matter, historical reference, utility, and socio-cultural attitude.

SYMBOLIC MEANING:

- Exhibit unique contribution
- Symbolism emplacement

placement to best exemplify majesty a place of prominence

royal setting fitting of an ali'i of the Hawaiian Kingdom,
which best portrays the leadership and courage

with their likeness and descriptions and including kahili and
pulo'ulo'u as symbols of rank

AESTHETIC PURPOSE:

- Educate
- Perpetuate
- Honor
- Public Testimony to all
- Recognition in their environment
- Legitimize existence of Hawaiian Monarchy

Staging

Staging refers to the placement of the work of art and the design of the setting so as to present the work to its best advantage. Factors to be considered include background, foreground, enframement, base, and lighting.

A. SOCIAL PURPOSE:

- Create a reason to gather
- Site where you can gather

appropriate lighting for security and enhancement of the art:
Height of the head must be above viewers

Visibility and Comprehension

Visibility and comprehension refer to the position from which people view the work and how much of it is seen at a given time and for how long. Factors to be considered include the speed, the angle of vision, and the distance from which the work is observed.

Environmental Relationship

Environmental relationship refers to the interaction of the work with its environment.

Physical Qualities

The physical qualities of a work of art include size/scale, shape/form, material, mass/density, and complexity. While physical qualities are pertinent to all criteria, it is especially applicable to contextual relevance, and staging.

Monumental scale

figurative representation

Sculpture Materials – Bronze

Pedestal Materials –stone

Landscaping -minimal such as grass and stone for ease of maintenance



THE STATE FOUNDATION ON CULTURE AND THE ARTS
Art Advisory Committee

ART IN PUBLIC
PLACES PROGRAM

Project
Development

Please type.

PROJECT

Spirit of Lili'uokalani

LOCATION OF ARTWORK

Assess and discuss desirable site(s) for the artwork based on the following criteria:

- A. PUBLIC ACCESSIBILITY
- B. RELATIONSHIPS TO ARCHITECTURAL ELEMENTS AND UTILITIES
- C. ENVIRONMENTAL, VISUAL AND PRACTICAL FEATURES WHICH MIGHT AFFECT ARTWORK INSTALLATION
- D. COMPATIBILITY WITH ESTABLISHED OR EXPECTED MASTER PLAN FEATURES

- Has to be a place of prominence
- A combined monument depicting all

TYPE OF ARTWORK

Check any combination.

- ☐ 2-DIMENSIONAL ☐ ATTACHED TO/ARCHITECTURALLY INTEGRATED WITH _____
- ☒ 3-DIMENSIONAL _____
- ☒ FREESTANDING _____
- ☐ SUSPENDED ☐ OPEN TO PROPOSAL BY ARTIST

CHARACTER OF ARTWORK

Explain and discuss the Art Advisory Committee's views and desires about the following features of the artwork.

- A. AESTHETIC PURPOSE:
 - Educate
 - Perpetuate
 - Honor
 - Public Testimony to all
 - Recognition in their environment
 - Legitimize existence of Hawaiian Monarchy

CHARACTER OF ARTWORK

B. SOCIAL PURPOSE:

- Create a reason to gather
- Site where you can gather

C. SYMBOLIC MEANING:

- Stature
- Importance
- Prominence
- Exhibit unique contribution
- Subject matter
- Symbolism emplacement

D. MATERIALS AND FINISHES:

- Bronze
- Stone
- Landscaping minimal such as grass and stone for ease on maintenance

E. SIZE:

- Heroic Scale
- Height of the head must be above viewers

SUBMITTED BY:

Chairperson, Art Advisory Committee

Date



THE STATE FOUNDATION ON CULTURE AND THE ARTS
Art Advisory Committee

ART IN PUBLIC
PLACES PROGRAM

Project
Development

Please type.

PROJECT

- Ali'i Memorial

LOCATION OF ARTWORK

Assess and discuss desirable site(s) for the artwork based on the following criteria:

A. PUBLIC ACCESSIBILITY

B. RELATIONSHIPS TO ARCHITECTURAL ELEMENTS AND UTILITIES

C. ENVIRONMENTAL, VISUAL AND PRACTICAL FEATURES WHICH MIGHT AFFECT ARTWORK INSTALLATION

D. COMPATIBILITY WITH ESTABLISHED OR EXPECTED MASTER PLAN FEATURES

- Link to their home is significant
- Has to be a place of prominence
- A combined monument depicting all
- Possibly on all islands

TYPE OF ARTWORK

Check any combination.

☐ 2-DIMENSIONAL ☐ ATTACHED TO/ARCHITECTURALLY INTEGRATED WITH _____
☒ 3-DIMENSIONAL _____
☒ FREESTANDING _____
☐ SUSPENDED ☐ OPEN TO PROPOSAL BY ARTIST

CHARACTER OF ARTWORK

Explain and discuss the Art Advisory Committee's views and desires about the following features of the artwork.

A. AESTHETIC PURPOSE:

- Educate
- Perpetuate
- Honor
- Public Testimony to all
- Recognition in their environment
- Legitimize existence of Hawaiian Monarchy

CHARACTER OF ARTWORK

B. SOCIAL PURPOSE:

- Create a reason to gather
- Site where you can gather

C. SYMBOLIC MEANING:

- Stature
- Importance
- Prominence
- Exhibit unique contribution
- Subject matter
- Symbolism emplacement

D. MATERIALS AND FINISHES:

- Bronze
- Stone
- Landscaping minimal such as grass and stone for ease on maintenance

E. SIZE:

- Heroic Scale
- Height of the head must be above viewers

SUBMITTED BY:

Chairperson, Art Advisory Committee

Date

State Foundation on Culture and the Arts
Ali'i Memorial Art Advisory Task Force Committee
Meeting Attendance Sheet

Meeting Location: _____ Date: _____

Time: _____

Initial	Name	Organization
	Annelle Amaral	Association of Hawaiian Civic Clubs
	Antoinette Lee	Pearl Harbor Hawaiian Civic Club
	Chris Kinimaka	Department of Accounting and General Services
	Jonathan Johnson	Hawai'i State Foundation on Culture and the Arts
	Kainoa Daines	Royal Order of Kamehameha I
	Kamana`o Crabbe	Office of Hawaiian Affairs
	Kekoa Kaluhiwa	Board of Land and Natural Resources
	Kippen de Alba Chu	Friends of `Iolani Palace
	Louise Koch Schubert	Heirs of Queen Lili`uokalani and Prince Consort John Dominis
	Maile Meyer	Mauna`ala
	Marlene Sai	Ahahui `O Lili`uokalani Hawaiian Civic Club
	Momi Cazimero	Prince Kuhio Hawaiian Civic Club
	Oswald Stender	Hui Hanai representing the Queen Lili`uokalani Trust
	Patricia Hamamoto	Hawai'i State Foundation on Culture and the Arts
	Puakea Nogelmeier	Washington Place Foundation
	Representative Jarrett K. Keohokalole	House of Representatives
	Senator Brickwood Galuteria	Senate
	Charles Kapua	Pearl Harbor Hawaiian Civic Club
	Colin Kippen	Senator Brickwood Galuteria's Office
	Raytan Vares	Legislative Assistant, Senator Brivkwood Galuteria's Office
	Wintehn Park	Senate Majority Special Counsel
	PeeWee Ryan	Prince Kuhio Hawaiian Civic Club
	Tory Laitila	Honolulu City and County Mayor's Office on Culture and the Arts
	Misty Kela`i	Honolulu City and County Mayor's Office on Culture and the Arts

STATE FOUNDATION ON CULTURE AND THE ARTS
250 South Hotel Street 2nd Floor
Honolulu, HI 96813
(808) 586-0305

ALI'I MEMORIAL ART ADVISORY TASK FORCE
ORIENTATION MEETING
MINUTES

October 28, 2016

Attendees:

Task Force Representatives

Annelle Amaral, Association of Hawaiian Civic Clubs
Momi Cazimero, Prince Kuhio Hawaiian Civic Club
Kamana'o Crabbe, Office of Hawaiian Affairs
Kainoa Daines, Royal Order of Kamehameha I
Kippen de Alba Chu, Friends of 'Iolani Palace
Senator Brickwood Galuteria, Senate
Pat Hamamoto, State Foundation on Culture and the Arts
Kekoa Kaluhiwa, Board of Land and Natural Resources
Christine Kinimaka, Department of Accounting and General Services
Louise Koch Schubert, Heirs of Queen Lili'uokalani and Prince Consort John Dominis
Antoinette Lee, Pearl Harbor Hawaiian Civic Club
Maile Meyer, Mauna'ala
Puakea Nogelmeier, Washington Place Foundation
Marlene Sai, Ahahui 'O Lili'uokalani Hawaiian Civic Club
Oswald Stender, Hui Hanai representing the Queen Lili'uokalani Trust

Other

Charles Kapua, Pearl Harbor Hawaiian Civic Club
Misty Kela'i, Mayor's Office on Culture and the Arts
Tory Laitila, Mayor's Office on Culture and the Arts
Julia K. Peleiholani for Representative Jarrett K. Keohokalole
Raytan Vares, Aid to Senator Galuteria

SFCA Staff

Jonathan Johnson, SFCA Executive Director
Karen Ewald, SFCA APP Manager
Jayne Ratliff, SFCA Secretary

SFCA Executive Director Jonathan Johnson called the meeting to order at 2:05 PM.

1. INTRODUCTIONS

The group opened by singing the Doxology in Hawaiian. All persons in attendance introduced themselves by name and affiliation.

2. Roles and Responsibilities per SCR96

SFCA Executive Director Jonathan Johnson introduced the resolution, meeting agenda, and roles and responsibilities of the task force.

3. Discussion and or Action Regarding Chair Nominations and Election

The following persons were nominated for the position of Chair of the Ali'i Memorial Art Advisory Task Force:

- 1) Pat Hamamoto – declined
- 2) Senator Brickwood Galuteria – accepted
- 3) Gussie Koch Schubert – declined

Senator Galuteria was elected unanimously.

Kekoa Kaluhiwa suggested the selection of a Vice-Chair. The following persons were nominated:

- 1) Kekoa Kaluhiwa – declined
- 2) Oswald Stender – declined
- 3) Annelle Amaral – accepted
- 4) Maile Meyer – declined

Annelle Amaral was elected by a majority vote.

4. Rules and Procedures – Guidelines for Art Advisory Committee

SFCA Executive Director gave a presentation about the Art Advisory Committee (AAC) Guidelines that the SFCA typically uses for Commissioned Works of Art projects. He added that the task force will determine its own criteria for works of art over the coming months. There was discussion on adopting a method for managing meetings including Robert's Rules, Mason's Rules, and the possibility of adopting traditional Hawaiian meeting rules. The task force decided to adopt Robert's Rules of Order.

5. History and Objectives - Monuments and Process

a. Art in Public Places Program

SFCA Executive Director gave an overview of the history and purpose of the State Foundation, the Art in Public Places program, and the works of art

commemorating the Ali'i presently within the SFCA Art in Public Places collection.

b. Mayor's Office of Culture & the Arts

Tory Laitila gave an overview of the history and purpose of the Mayor's Office on Culture and the Arts the works of art commemorating the Ali'i presently within the collection.

There was discussion regarding the scope of the resolution, including possible expansion to include members of the Ali'i not listed. There was clarification regarding the identity of the Ali'i who are listed in the resolution; they were all sitting heads of state. There were questions and clarification regarding the availability of funding and the process of funding for the project. Annelie Amaral made a motion to take into consideration the women Ali'i. There was more discussion as to how far the scope could and should be extended, and whether or not the motion should be voted upon at this time. The motion was rescinded.

6. Timeline

There was discussion regarding the frequency with which the task force should meet. There was a suggestion of monthly meetings. Chair Brickwood Galuteria and Vice-Chair Annelie Amaral suggested the formation of committees to increase frequency. Tory Laitila offered that if the task force determines that it would like a work to be commissioned on city land, that he and the Mayor's Office would be happy to facilitate a transfer of monuments to the City and County of Honolulu. There was discussion regarding the end goals of the task force. The resolution was reviewed. There was more discussion regarding the possible scope, location, and criteria of the project. SFCA Executive Director suggested that the next meeting be devoted to determining criteria. There was general support for this idea.

In conclusion, the group chanted Ku'e.

7. Next Meeting Date, Time, Location: Wednesday, December 28, 2:00 PM in the Multipurpose Room, 250 South Hotel Street.

The meeting was adjourned at 3:26 PM.

STATE FOUNDATION ON CULTURE AND THE ARTS
250 South Hotel Street 2nd Floor
Honolulu, HI 96813
(808) 586-0305

ALI'I MEMORIAL ART ADVISORY TASK FORCE
SECOND MEETING
MINUTES

December 28, 2016

Attendees:

Task Force Representatives:

Momi Cazimero, Prince Kuhio Hawaiian Civic Club
Kainoa Daines, Royal Order of Kamehameha I
Kippen de Alba Chu, Friends of `Iolani Palace
Senator Brickwood Galuteria, Senate
Louise Koch Schubert, Heirs of Queen Lili`uokalani Hawaiian Civic Club
Oswald Stender, Hui Hanai representing the Queen Liliu`okalani Trust

Other

Misty Kela`i, Mayor's Office on Culture and the Arts
Tory Laitila, Mayor's Office on Culture and the Arts
PeeWee Ryan, Prince Kuhio Hawaiian Civic Club

SFCA Staff

Jonathan Johnson, SFCA Executive Director
Crystal Rambayon, SFCA APP Office Assistant
Scott Young, SFCA APP Visitor Service Manager

Senator Brickwood Galuteria called the meeting to order at 2:02 PM

The group opened up by singing, "Ho`onani I Ka Makua Mau," lead by Misty Kela`i. Senator Galuteria greeted the committee Happy Holidays and mentioned that he is looking forward to the new year to come with good, interesting, and meaningful ideas to praise and lift the Ali`i in ways that have never been done before. He also added that he wants to end today with what defines Ali`i Memorial, what levels we speak to, what we have existing, and what we would like to see. Senator Galuteria asked the taskforce to open up the doors of thought and proposed the idea of "vision-casting."

1. Approval of Minutes (October 28, 2016)

2. Monuments Overview

Senator Brickwood Galuteria gave a presentation on national monuments such as Mt. Rushmore and Crazy Horse. Senator Galuteria suggested an idea to the taskforce that Hawai'i could showcase to the world something of this nature. SFCA Executive Director, Jonathan Johnson, explained how the funding works. He added that however it is being framed, it must meet the criteria of the fund. The SFCA Executive director introduced a book called, Written In Stone, by Sanford Levinson, and mentioned to the task force that a copy of the book will be available to each member soon.

Tory Laitila mentioned that he and Misty Kela'i's organization, Mayor's Office on Culture and the Arts, is not listed in the Resolution and asked if they should be further involved with this task force. Senator Galuteria agreed to draft a letter to the mayor to make their participation official. He also suggested to the task force if a member is unable to attend, it is preferred that no one else comes on behalf of the member and to view information through the minutes.

3. Review of SCR96

Senator Galuteria introduced the taskforce to Wintehnn Park, Senate Majority Special Counsel. Counsel Park explained to the taskforce that the legislature has given them the opportunity to give direction in order for legislature to take action. Counsel Park reminded the taskforce to refer back to the document and address two specific items:

- 1) The placement of the Queen Lili'uokalani Statue
- 2) Commissioning permanent works of art commemorating other Ali'i listed in SCR96

Counsel Park also mentioned that any other issues of expansion and consideration of other Ali'i can be included in the report after the two issues listed has been discussed. He added that there was a concern that if the taskforce has not addressed the first two issues the legislature has asked for, there is a good chance that the legislature will respond with no answers. If the taskforce has any questions or concerns, Counsel Park will be the point of contact.

4. Project Development Phase

The SFCA Executive Director presented a copy of a worksheet for project development phase to the taskforce. He explained to the taskforce that based on the worksheet, criteria could be formed. Tory Laitila gave an overview of the Mayor's Office on Culture and Arts process and also mentioned their current project at Thomas Square Park. The taskforce went through the worksheet with the SFCA Executive Director and discussed aesthetic purpose, social purpose, and symbolic meaning. They also discussed about creating one type of monument to honor all eight Ali'i and reproducing it on every island, making each monument reminiscent of the specific island where it would reside.

5. Establish Criteria

The SFCA Executive Director presented the taskforce with the SCR criteria and SFCA's criteria for commissioned works of art. SFCA criteria included: representation, contextual relevance, subject matter, sociocultural attitude, staging, proximity, environmental relationship, and additional features. The SFCA Executive Director asked questions to the taskforce about the appropriate scale and landscaping, and whether or not the taskforce should collectively look for a combined monument or focus on addressing each individually.

There was a discussion amongst the taskforce in regards to: proximity, stone and bronze pedestals, elevation to minimize crowd interaction, landscaping, heroic representation scale, a combined monument, figures, and Kahili and Pulo'ulo'u as additional features. The taskforce agreed to have a figurative representation and grass type landscaping with no water feature.

6. Commissioning Permanent Works of Art

The SFCA Executive Director asked the taskforce if they should break up the group into smaller groups to research on these individuals and return to the upcoming meeting with their findings. Momi Cazimero and Louise Koch Schubert agreed to research on Queen Lili'uokalani. Kainoa Daines agreed to research on Kings Kamehameha II, IV, V, and King Lunalilo. Kippen de Alba Chu agreed to research on King Kalakaua.

Tory Laitila suggested the taskforce to focus on the four Ali'i that are currently not represented for the island of Oahu.

Senator Galuteria reminded the members to attend future meetings.

The meeting concluded with "Queen's Prayer (Ke Aloha O Ka Haku)," in honor of Queen Lili'uokalani, sung by the taskforce which was led by Misty Kela'i.

- 7. Next Meeting Date, Time, Location:** Thursday, January 26, 2017 at 2:00 PM, in the Multipurpose room, 250 South Hotel Street.

Senator Galuteria adjourned the meeting at 3:26 PM

STATE FOUNDATION ON CULTURE AND THE ARTS
250 South Hotel Street, 2nd Floor
Honolulu, Hawaii 96813
(808) 586-0302
ALI`I MEMORIAL ART ADVISORY TASK FORCE
THIRD MEETING
MINUTES
January 26, 2017

Attendees:

Task Force Representatives

Senator Brickwood Galuteria, Chairperson; Senate
Momi Cazimero, Prince Kuhio Hawaiian Civic Club
Kainoa Daines, Royal Order of Kamehameha I
Kippen de Alba Chu, Friends of `Iolani Palace
Kekoa Kaluhiwa, Board of Land and Natural Resources
Representative Jarrett K. Keohokalole, House of Representatives
Louise Koch Schubert, Heirs of Queen Lili`uokalani and Prince Consort John Dominis
Marlene Sai, Ahahui `O Lili`uokalani Civic Club

Other

Misty Kela`i, Mayor's Office on Culture and the Arts
Colin Kippen, Senator Brickwood Galuteria's office
Tory Laitila, Mayor's Office on Culture and the Arts
Wintehn Park, Senate Majority Special Counsel

SFCA Staff

Jonathan Johnson, SFCA Executive Director
Karen Ewald, SFCA Art in Public Places Manager
Susan Hogan, SFCA Museum Educator
Crystal Rambayon, SFCA Office Assistant

Senator Brickwood Galuteria called the meeting to order at 2:03 P.M. The task force opened up with a prayer and singing "Ho`onani I Ka Makua Mau," lead by Misty Kela`i.

1. Chairperson's message

Senator Brickwood Galuteria greeted the task force and re-introduced to them the idea of "vision-casting." He also shared his experiences at the Inauguration and his thoughts on the monuments and memorials in Washington D.C. He reminded the task force to keep these words in mind: heroic, monumental, historic, and appropriate. Senator Galuteria also introduced Colin Kippen to the taskforce and re-introduced Wintehn Park who would be available for them, if they had any legal questions.

2. Approval of minutes

Senator Galuteria asked the task force to review the minutes. Louise Koch Schubert asked to edit her organization from Heirs of Queen Lili`uokalani Hawaiian Civic Club to Heirs of Queen Lili`uokalani and Prince Consort John Dominis. There was a clarification discussion to the subject of Queen Lili`uokalani. SFCA Executive Director, Jonathan Johnson, mentioned to the taskforce that the minutes are not a recording of statements but are intended to summarize the discussion and record actions. Momi Cazimero moved to accept the minutes which was seconded by Kainoa Daines.

3. Monument Exercise

SFCA Executive Director, Jonathan Johnson, introduced the exercise to the task force. SFCA Museum Educator, Susan Hogan, led the taskforce in an exercise looking at various exterior sculptures and monuments. The purpose of this exercise was to expand their thoughts on what a monument could be.

4. Information Sharing

Kainoa Daines gave a brief presentation about King Kamehameha II, King Kamehameha IV, King Kamehameha V, and King Lunalilo (see attachment). Kippen De Alba Chu also gave a brief presentation about King Kalakaua (see attachment). Tory Laitila and Misty Kela`i gave an update on Thomas Square Park and invited the taskforce to an introductory meeting at 550 South King Street on March 9, 2017 and a selection meeting in May (date TBD). Misty also gave a brief presentation about the possible placement of King Kamehameha III statue to the task force.

5. Review Criteria

SFCA Executive Director, Jonathan Johnson, went through and reviewed the criteria worksheet with the task force. He reminded the task force that the project development form is a working document and asked them to add more ideas and report back to the task force in the upcoming meeting. The task force added "monumental" and "historic" to the criteria. Senator Brickwood Galuteria added "a place for people to meet," in the criteria worksheet and reminded the task force of the "blue skies" concept.

6. "Written in Stone" by Sanford Levinson

Senator Brickwood Galuteria introduced the book, "Written in Stone," by Sanford Levinson to the task force and encouraged them to read the book. Senator Galuteria told the task force to look at other perspectives and evaluate how other civilizations honor their heroes. SFCA Executive Director, Jonathan Johnson, passed out copies of the book to the task force. Jonathan Johnson mentioned to the task force that he had been in contact with the author and that the author is willing to meet and help inform the task force.

Senator Brickwood Galuteria concluded the meeting by thanking everyone who presented today and suggesting to meet on a month to month basis. He also noted that he will remain in contact with those members who were unable to attend meetings. The meeting ended with “Ho`onani I ka Makua Mau,” sung by the taskforce which was led by Marlene Sai.

7. **Next Meeting Date, Time, Location:** Wednesday, February 22, 2017 at 2:00 PM, Hawaii State Art Museum, Multi-purpose room, 250 South Hotel Street, Honolulu, Hawaii 96813.

Senator Galuteria adjourned the meeting at 3:21 P.M.

**STATE FOUNDATION ON CULTURE AND THE ARTS
250 South Hotel Street, 2nd Floor
Honolulu, Hawaii 96813
(808) 586-0302**

**ALI'I MEMORIAL ART ADVISORY TASK FORCE
FOURTH MEETING
MINUTES**

FEBRUARY 22, 2017

Attendees:

Task Force Representatives

Senator Brickwood Galuteria, Chairperson; Senate
Annelle Amaral, Co-Chairperson; Association of Hawaiian Civic Clubs
Momi Cazimero, Prince Kuhio Hawaiian Civic Club
Pat Hamamoto, SFCA Chairperson
Louise Koch Schubert, Heirs of Queen Lili'uokalani and Prince Consort John Dominis
Oswald Stender, Hui Hanai representing the Queen Lili'uokalani Trust
Kippen de Alba Chu, Friends of 'Iolani Palace
Maile Meyer, Mauna'ala
Marlene Sai, Ahahui 'O Lili'uokalani Hawaiian Civic Club

Other

Wintehn Park, Senate Majority Special Counsel
Rayten Vares, Office of Senator Brickwood Galuteria
Colin Kippen, Office of Senator Brickwood Galuteria

SFCA Staff

Jonathan Johnson, SFCA Executive Director
Karen Ewald, SFCA Art in Public Places Manager
Crystal Rambayon, SFCA Office Assistant

Senator Brickwood Galuteria called the meeting to order at 2:07 P.M. The task force opened up by singing "Ho'onani I ka Makua Mau," lead by Marlene Sai.

1. Chairperson's Message

Senator Galuteria greeted the task force and revisited the themes from the previous meetings. He also reintroduced Colin Kippen and Wintehn Park, Senate Majority Special Counsel, who would be available for them, if they had any legal questions. Senator Galuteria also reiterated and reinforced the concept of "vision casting." He also assured the task force that there is a sufficient amount for funding.

2. Approval of Minutes (01/26/17)

Senator Galuteria asked the task force to review the minutes. Annelle Amaral moved to accept the minutes which was seconded by Marlene Sai.

3. Information Sharing

Momi Cazimero and Louise Koch Schubert gave a presentation about Queen Lili'uokalani. The information presented included: genealogy, history, and information about the statue located at the State Capitol (see attachment).

4. Discussion/ Action to four individual Ali'i Monuments

Colin Kippen gave a brief overview and report of his experience of the National Museum of American Indian at Washington DC to the task force. He mentioned to the task force that the National Museum of American Indian is also planning on assembling a monument next to the museum.

SFCA Executive Director Jonathan Johnson gave a brief presentation of a proposed budget and location of singular Ali'i monuments and a combined Ali'i monument of the Ali'i members. There was a discussion on whether to complete the four individual Ali'i monuments or to create one whole monument of the Ali'i. Annelle Amaral made a motion to create an Ali'i Monument with the Ali'i members instead of creating separate monuments of the four remaining individual Ali'i. Marlene Sai seconded the motion, and the motion was carried.

The task force discussed the location of the proposed monument and SFCA Executive Director Jonathan Johnson reintroduced the project development worksheet for their reference. Senator Galuteria suggested for Kekoa Kaluhiwa from Department of Land and Natural Resources to research possible locations and present them to the task force at the next meeting.

SFCA Executive Director, Jonathan Johnson, asked the task force how to address the ho'okupu located at the Queen Lili'uokalani statue. There was a discussion about how to maintain the ho'okupu among the task force members.

5. Next Meeting Date, Time, Location:

Wednesday, March 22, 2017, at 2:00 P.M.

Hawaii State Art Museum, Multi-purpose room, 250 South Hotel Street, Honolulu, Hawaii 96813

Senator Brickwood Galuteria adjourned the meeting at 3:05 P.M.

STATE FOUNDATION ON CULTURE AND THE ARTS
250 South Hotel Street, 2nd Floor
Honolulu, Hawaii 96813
(808) 586-0302

ALI`I MEMORIAL ART ADVISORY TASK FORCE
FIFTH MEETING
MINUTES

MARCH 22, 2017

ATTENDEES:

Task Force Representatives:

Annelle Amaral, co-Chairperson, Association of Hawaiian Civic Clubs
Kippen de Alba Chu, Friends of `Iolani Palace
Momi Cazimero, Prince Kuhio Hawaiian Civic Club
Patricia Hamamoto, State Foundation on Culture and the Arts
Kekoa Kaluhiwa, Board of Land and Natural Resources
Representative Jarret K. Keohokalole, House of Representatives
Chris Kinimaka, Department of Accounting and General Services
Louise Koch Schubert, Heirs of Queen Lili`uokalani and Prince Consort John Dominis
Maile Meyer, Mauna`ala
Marlene Sai, Ahahui `O Lili`uokalani Hawaiian Civic Club
Oswald Stender, Hui Hanai representing the Queen Lili`uokalani Trust

Other:

Charles Kapua, Pearl Harbor of Hawaiian Civic Club
Misty Kela`i, Mayor's Office on Culture and the Arts
Colin Kippen, Office of Senator Brickwood Galuteria
Wintehn Park, Senate Majority Special Counsel
PeeWee Ryan, Prince Kuhio Hawaiian Civic Club
Kanoë Takitani-Puahi, Mayor's Office on Culture and the Arts

SFCA Staff:

Jonathan Johnson, SFCA Executive Director
Karen Ewald, SFCA Art in Public Places Manager
Crystal Rambayon, SFCA Office Assistant

SFCA Executive Director Jonathan Johnson called the meeting to order at 2:00 P.M.

1. Chairperson's Message

The Chairperson's message was postponed to the upcoming meeting.

2. Approval of Minutes (02/22/17)

SFCA Executive Director, Jonathan Johnson, asked the task force to review the minutes. Momi Cazimero moved to accept the minutes and was seconded by Marlene Sai. The minutes were approved unanimously.

3. Locations for Ali'i Monument

a. Monuments Master Plan

Chris Kinimaka gave a brief presentation on the Hawai'i Capital Special District Monument Master Plan. She explained to the task force that the purpose of the master plan were the following:

- Develop a vision and Capital District identity
- Develop an organization system
- Develop a management plan

b. Land and Natural Resources

Kekoa Kaluhiwa gave a brief presentation on the possible locations for the Ali'i Monument. Some locations that Kaluhiwa suggested were the Capitol District, state parks, and Queen Emma's Summer Palace. There was a discussion about a possible location on Diamond Head and Queen Emma's Summer Palace.

c. Kaka'ako Waterfront

SFCA Executive Director, Jonathan Johnson, gave a brief presentation about the possible location for the Ali'i Monument at Kaka'ako Makai Gateway Park. He mentioned that the park was owned by the Hawai'i Community Development Authority (HCDA). There was a discussion in regards to working with OHA and Howard Hughes in integrating the Ali'i Monument with their developing plans and re-design of Kaka'ako. Oswald Stender mentioned that the two parcels alongside the park are owned by the Bishop Estate and that the task force could also reach out them to integrate the Ali'i Monument. There was a discussion regarding the visibility and traffic should the Ali'i Monument be placed in this proposed location. SFCA Executive Director Jonathan Johnson, re-introduced the criteria worksheet to the task force. The task force decided to research further and report back their findings at the next meeting.

4. Report on Conversation with Sanford Levinson, Author of Written in Stone

SFCA Executive Director, Jonathan Johnson, updated the task force in regards to a Skype interview with Sanford Levinson. He reported to the task force that although Levinson mentioned that he has no special insight to what the task force is doing, he felt that every member on the task force are on the same page and that they are heading in a good direction.

5. Report on King Kamehameha III Statue

MOCA Executive Director, Misty Kela`i, updated the task force in regards to the Thomas Square Master Plan. She presented the six finalists and their renderings of their work of art for the King Kamehameha III Statue.

6. Announcements

MOCA Executive Director, Misty Kela`i, invited the task force to view the maquettes in-person at the Mayor's Office on Culture and the Arts.

The meeting concluded with "Ho`onani I Ka Makua Mau," sung by the task force which was led by Marlene Sai.

7. Next Meeting Date, Time, and Location:

Wednesday, April 19, 2017, at 2:00 P.M.

Mayor's Office on Culture and the Arts, Mission Memorial Hearing Room, 550 S. King Street, Honolulu, Hawaii 96813.

Co-Chairperson Annelle Amaral adjourned the meeting at 3:13 P.M.

STATE FOUNDATION ON CULTURE AND THE ARTS
250 South Hotel Street, 2nd Floor
Honolulu, Hawaii 96813

ALI`I MEMORIAL ART ADVISORY TASK FORCE MEETING
SIXTH MEETING
MINUTES
550 S. King Street
1st Floor, Mission Memorial Hearing Room
Honolulu, HI 96813
April 19, 2017

ATTENDEES:

Task Force Representatives:

Annelle Amaral, co-Chairperson, Association of Hawaiian Civic Clubs
Chris Kinimaka, Department of Accounting and General Services
Louise Koch Schubert, Heirs of Queen Liliu`okalani and Prince Consort John Dominis
Antoinette Lee, Pearl Harbor Hawaiian Civic Club
Marlene Sai, Ahahui `O Liliu`okalani Hawaiian Civic Club
Oswald Stender, Hui Hanai representing the Queen Lili`uokalani Trust

Other:

Charles Kapua, Pearl Harbor Hawaiian Civic Club
Misty Kela`i, Mayor's Office on Culture and the Arts
Colin Kippen, Office of Senator Brickwood Galuteria
Tory Laitila, Mayor's Office on Culture and the Arts
Wintehn Park, Senate Majority Special Counsel
Kanoë Takitani-Puahi, Mayor's Office on Culture and the Arts
Raytan Vares, Office of Senator Brickwood Galuteria

SFCA Staff:

Jonathan Johnson, SFCA Executive Director
Crystal Rambayon, SFCA Office Assistant

Co-Chairperson Annelle Amaral called the meeting to order at 2:10 P.M.

1. Chairperson's Message

The Chairperson's message was postponed until the upcoming meeting due to his absence.

2. Approval of Minutes (March 22, 2017)

Co-Chairperson Annelle Amaral asked the task force to review the minutes. SFCA Office Assistant, Crystal Rambayon, requested a correction to the attendees list. Mayor's Office on Culture and the Arts (MOCA), Tory Laitila, noted that there was a technical

error on the Report on King Kamehameha III Statue. Oswald Stender moved to accept the minutes with the corrections and was seconded by Marlene Sai. The minutes were approved unanimously with the corrections.

3. Discussion and or action regarding the Ali'i Memorial

a. Locations

The discussion regarding locations of the Ali'i Memorial was deferred until the upcoming meeting.

4. Discussion and or action regarding the Spirit of Lili'uokalani

a. History

The discussion regarding the history of the Spirit of Lili'uokalani was deferred until the upcoming meeting.

b. Review criteria

SFCA Executive Director Jonathan Johnson presented the updated criteria worksheet to the task force. Co-Chairperson Annelle Amaral mentioned to the task force that the intentions of this worksheet is to review whether the criterions are sufficient or if there should be any additions or deletions. The current listed criterions are compiled from the task force and the task force added that the "staging of the work of art matters" to the criteria worksheet. There was a clarification if the criteria applies to all works of art or the Ali'i Memorial and a discussion regarding symbolic meaning, location, visibility, environmental relationship, and maintenance of the works of art. There was also a clarification regarding the mechanics of the criteria worksheet. Co-chairperson Annelle Amaral reminded the task force of the due date of the overall report to the Legislation. Oswald Stender suggested for each task force member to fill out the worksheet to the best of their ability to establish a benchmark for the criteria and report back their responses at the upcoming meeting.

5. Thomas Square Update

MOCA Executive Director, Misty Kela'i, updated the task force regarding the Thomas Square Park and gave a brief tour of the maquettes for the King Kamehameha III Statue.

6. Announcements

There were no announcements.

The meeting concluded with "Ho'onani I Ka Makua Mau," sung by the task force which was led by Misty Kela'i.

7. Next Meeting Date, Time, Location:

Wednesday, May 31, 2017, at 2:00 P.M.

Hawaii State Art Museum, Room 103, 250 South Hotel Street, First Floor, Honolulu,
Hawaii 96813

Co-Chairperson Annelle Amaral adjourned the meeting at 3:15 P.M.

ALI`I MEMORIAL ART ADVISORY TASK FORCE MEETING

250 South Hotel Street

First Floor, Multipurpose Room

Honolulu, HI 96813

July 20, 2017

2:00 PM

MINUTES

ATTENDEES:

Task Force Representatives:

Senator Brickwood Galuteria, Chairperson

Annelle Amaral, Vice-Chairperson

Kippen de Alba Chu, Friends of `Iolani Palace

Momi Cazimero, Prince Kuhio Hawaiian Civic Club

Kainoa Daines, Royal Order of Kamehameha I

Representative Jarret K. Keohokalole, House of Representatives

Maile Meyer, Mauna`ala

Louise Koch Schubert, Heirs of Queen Lili`uokalani and Prince Consort John Dominis

Oswald Stender, Hui Hanai representing the Queen Lili`uokalani Trust

Other:

Misty Kela`i, Mayor's Office on Culture and the Arts

Tory Laitila, Mayor's Office on Culture and the Arts

Rayten Vares, Senator Brickwood Galuteria's Office

Wintehn Park, Senate Majority Special Counsel

Pee Wee Ryan, Prince Kuhio Hawaiian Civic Club

SFCA Staff:

Jonathan Johnson, SFCA Executive Director

Karen Ewald, Art in Public Places Manager

Crystal Rambayon, SFCA Office Assistant

Chairperson Senator Brickwood Galuteria called the meeting to order at 2:02 P.M. The task force opened up with a prayer and singing "Ho`onani Ka Makua Mau," lead by Misty Kela`i.

1. Chairperson's Message

Senator Brickwood Galuteria thanked Vice-Chairperson Annelle Amaral for facilitating the previous meetings during his absence. He updated the task force regarding the special session at the Legislature. Senator Galuteria also reminded the task force to remain focused on the resolution.

2. Approval of Minutes (April 19, 2017)

Senator Brickwood Galuteria asked the task force to review the minutes. Senator Galuteria requested to change the term "co-chair" to "vice chair." Vice-Chairperson Annelle Amaral moved to accept the minutes as amended which was followed by a second from Louise Koch Schubert. The minutes was approved unanimously as amended.

3. Discussion and or action regarding the Ali'i Memorial

a. Locations

SFCA Executive Director, Jonathan Johnson, asked the task force for an update regarding the possible locations of the Ali'i Memorial. There was no current update for the possible locations and was deferred.

4. Discussion and or action regarding the Spirit of Lili'uokalani

Senator Brickwood Galuteria reviewed the resolution with the taskforce regarding the placement of the Spirit of Lili'uokalani statue. SFCA Executive Director, Jonathan Johnson reviewed the criteria worksheet to the task force. Each member of the task force then shared their comments regarding the placement of the Spirit of Lili'uokalani statue. The task force entered into discussions regarding the symbolic meaning as well as the the location (see attachment). Overall the task force concluded the current setting and location of the Spirit of Lili'uokalani statue does not best exemplify her majesty.

5. Announcements

Misty Kela'i gave a brief update regarding the status of the King Kamehameha III statue. She asked the task force for their input on it's current plans.

6. Next Meeting Date, Time, Location:

Wednesday, August 30, 2017, at 2:00 P.M.
Hawaii State Art Museum, Multipurpose room
250 South Hotel Street, First Floor
Honolulu, Hawaii 96822

The meeting ended with "Hawai'i Aloha," sung by the task force which was led by Misty Kela'i.

Senator Brickwood Galuteria adjourned the meeting at 3:18 P.M.

ALI`I MEMORIAL ART ADVISORY TASK FORCE MEETING
250 South Hotel Street
First Floor, Multipurpose Room
Honolulu, HI 96813
September 14, 2017
2:00 PM

MINUTES

ATTENDEES:

Task Force Representatives:

Senator Brickwood Galuteria, Chairperson
Annelle Amaral, Vice-chairperson
Kippen de Alba Chu, Friends of `Iolani Palace
Momi Cazimero, Prince Kuhio Hawaiian Civic Club
Representative Jarrett K. Keohokalole, House of Representatives
Chris Kinimaka, Department of Accounting and General Services
Antoinette Lee, Pearl Harbor Hawaiian Civic Club
Marlene Sai, Ahahui `O Lili`uokalani Hawaiian Civic Club
Louise Koch Schubert, Heirs of Queen Lili`uokalani and Prince Consort John Dominis
Oswald Stender, Hui Hanai representing the Queen Lili`uokalani Trust

Ex-Official Task Force Representatives:

Misty Kela`i, Mayor's Office on Culture and the Arts
Tory Laitila, Mayor's Office on Culture and the Arts

Other:

Charles Kapua, Pearl Harbor of Hawaiian Civic Club
Raytan Vares, Senator Brickwood Galuteria's Office
Wintehn Park, Senate Majority Special Counsel
Pee Wee Ryan, Prince Kuhio Hawaiian Civic Club

SFCA Staff:

Jonathan Johnson, SFCA Executive Director
Karen Ewald, Art in Public Places Manager
Crystal Rambayon, SFCA Office Assistant

Chairperson Senator Brickwood Galuteria called the meeting to order at 2:02 P.M. The task force opened up with a prayer and singing "Ho`onani Ka Makua Mau," lead by Misty Kela`i.

1. Chairperson's Message

Chairperson Senator Brickwood Galuteria welcomed the task force and announced that Kenneth Makuakane was chosen as the new Senior Kahu at Kawaiaha'o Church.

2. Approval of Minutes (April 19, 2017)

Chairperson Senator Brickwood Galuteria asked the task force to review the minutes. SFCA Executive Director, Jonathan Johnson, asked the task force whether the supporting documents given by Momi Cazimero should be included with the minutes. Senate Majority Special Counsel, Wintehn Park suggested to attach it to the minutes for this meeting and notate that it was received and discussed by the task force. Representative Jarrett K. Keohokalole and Raytan Vares requested to correct their spelling of their names. Chairperson Senator Galuteria requested for Misty Kela'i and Tory Laitila to be listed as Ex-Official. There was a clarification regarding the structure of the minutes, which Mr. Johnson noted to the task force that the minutes is not a dictation but a distilled summary of what occurred in the meeting. Vice-Chairperson Annelle Amaral moved to accept the minutes as amended which was followed by a second from Louise Koch Schubert. The minutes was approved unanimously as amended.

3. Discussion and or action regarding the Spirit of Lili'uokalani

a. Summary of criteria worksheet

Mr. Johnson presented a summary of the criteria worksheet to the task force. A supporting document written by Ms. Cazimero was distributed to the task force. Vice-Chairperson Amaral went through the two documents and requested the task force discuss. Antoinette Lee explained in detail that the Pearl harbor Hawaiian Civic Club has a tradition of placing lei on the statue on Ali'i Sunday. Ms. Lee also voiced her concern over the maintenance of the Spirit of Lili'uokalani. There was a lengthy discussion regarding the placement, permits, and length lei and hookup should be left on the Spirit of Lili'uokalani statue. Chairperson Senator Galuteria notified to the task force that everything is subjective and that the task force has not arrived at a decision. Chairperson Senator Galuteria requested to give the topic a little more time and to continue to discuss potential locations.

b. Locations

Mr. Johnson presented potential locations for the Spirit of Lili'uokalani including present location, the Hawaii State Library, the Queen Lili'uokalani Building, and the Eternal Flame Memorial. He explained that the Department of Accounting and General Services (DAGS) is currently working on a Monuments Master Plan within the Capitol District. Chris Kinimaka of DAGS gave an overview of the DRAFT Monuments Master Plan to the task force. There was a discussion regarding the intentions and procedure of the Monuments Master Plan. Chairperson Senator Galuteria advised the task force to not be concerned with the financial aspect. Charles Kapua noted that the Spirit of Lili'uokalani needs to be located in an area that is appropriate. Ms. Lee also addressed the lack of

maintenance to the Spirit of Lili'uokalani and questioned if any action will be made. Mr. Johnson replied that Chairperson Senator Galuteria will meet with the Department of Accounting and General Services Comptroller regarding that matter in the coming week.

4. Discussion and or action regarding the Ali'i Memorial

Chairperson Senator Galuteria asked the task force in the interest of time, to defer this topic for the next meeting. The task force agreed to defer this topic for the next meeting.

5. Announcements

Misty Kela'i gave a brief update regarding the status of the King Kamehameha III statue along with its completion target date of July 2018.

6. Next Meeting Date, Time, Location: To be determined.

The meeting ended with "Hawai'i Aloha," sung by the task force which was led by Misty Kela'i.

Senator Brickwood Galuteria adjourned the meeting at 3:18 P.M.

Monuments Works of Art Memorial Markers

DRAFT



STATE CAPITAL MONUMENTS MASTER PLAN

MARCH 2017



Introduction

- Purpose
- Project Goals
- Planning Constraints
- Project Limits Diagram



Father Damien

Master Plan Purpose

- Develop a Vision and Capital District Identity (Sense of Place)
- Develop an Organization System
- Develop a Management Plan



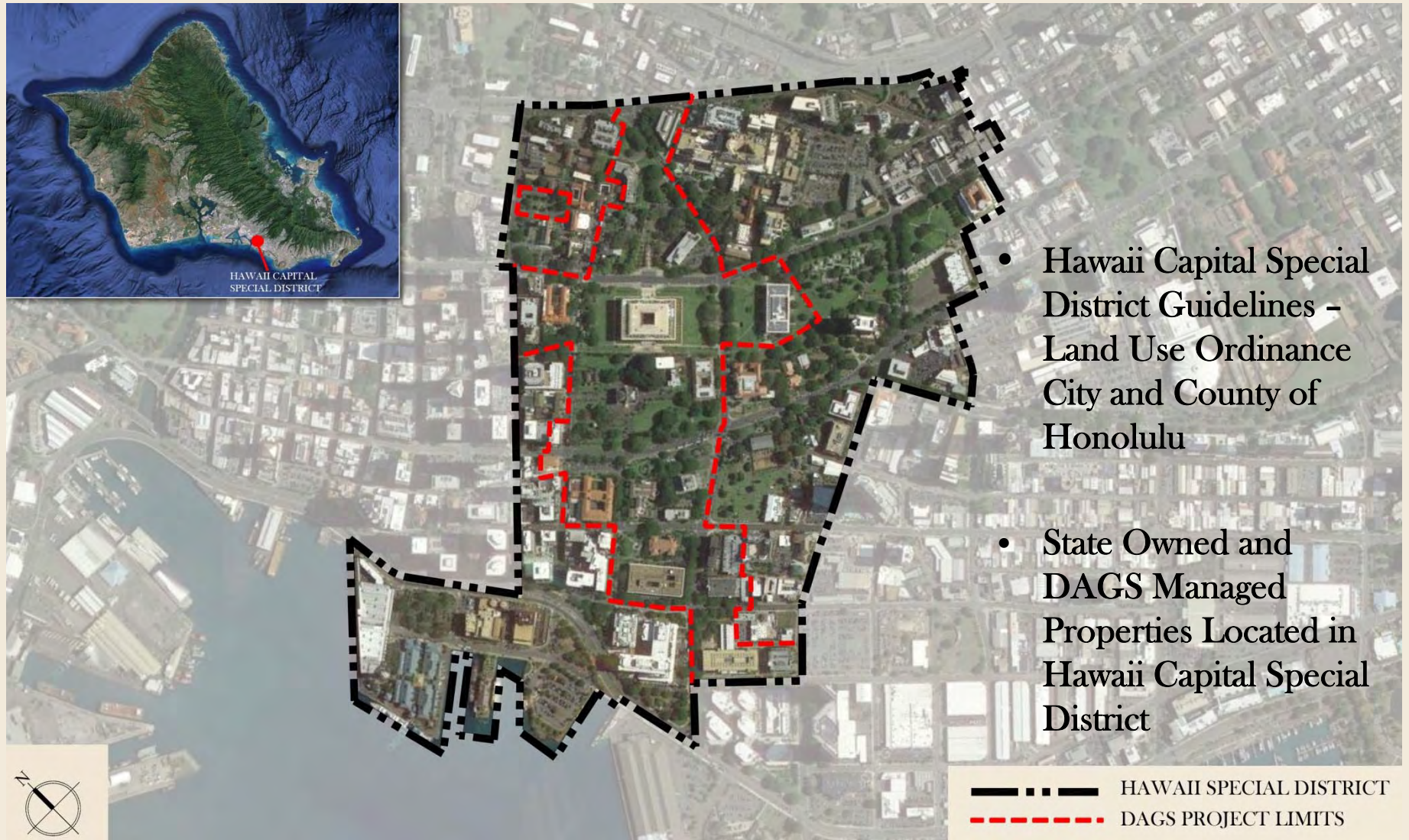
Project Goals

- Review Existing Master Plans For Updates/Changes
- Create an Inventory of Existing and Future Assets
- Create a Management Plan System for Application and Approval Processes



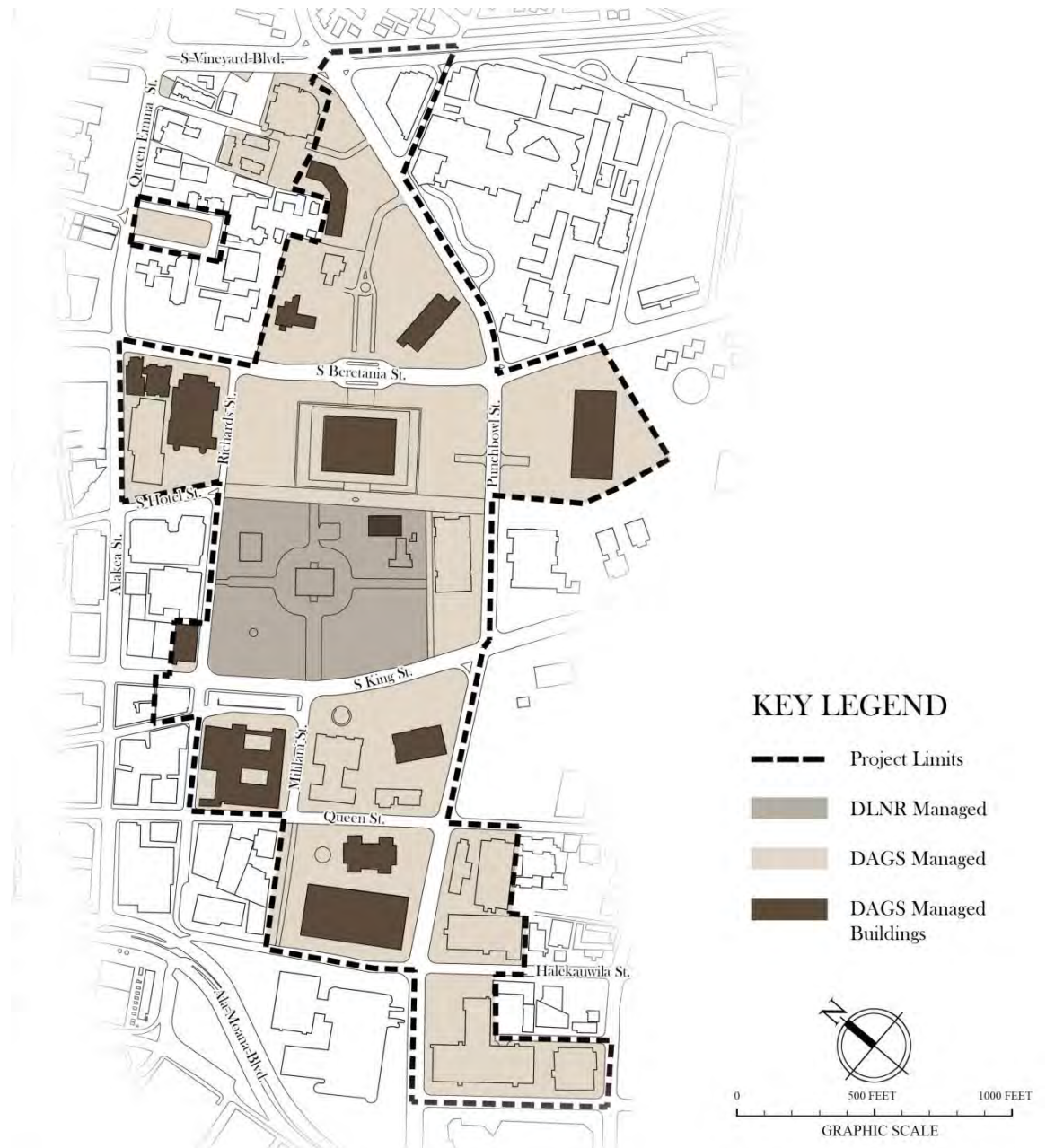
The Spirit of Liliuokalani

Planning Constraints



Hawaii Capital Special District DAGS-Managed Lands

The project limits are the areas
within Hawaii Capital Special
District managed by the DAGS



Methodology

- Development of 3 Main Categories
 - Monument
 - Work of Art
 - Memorial Marker
- Development of Monument Theme Classifications

Monument



The Eternal Flame

Work of Art



Hawaiian Mountain Series I

Memorial Marker

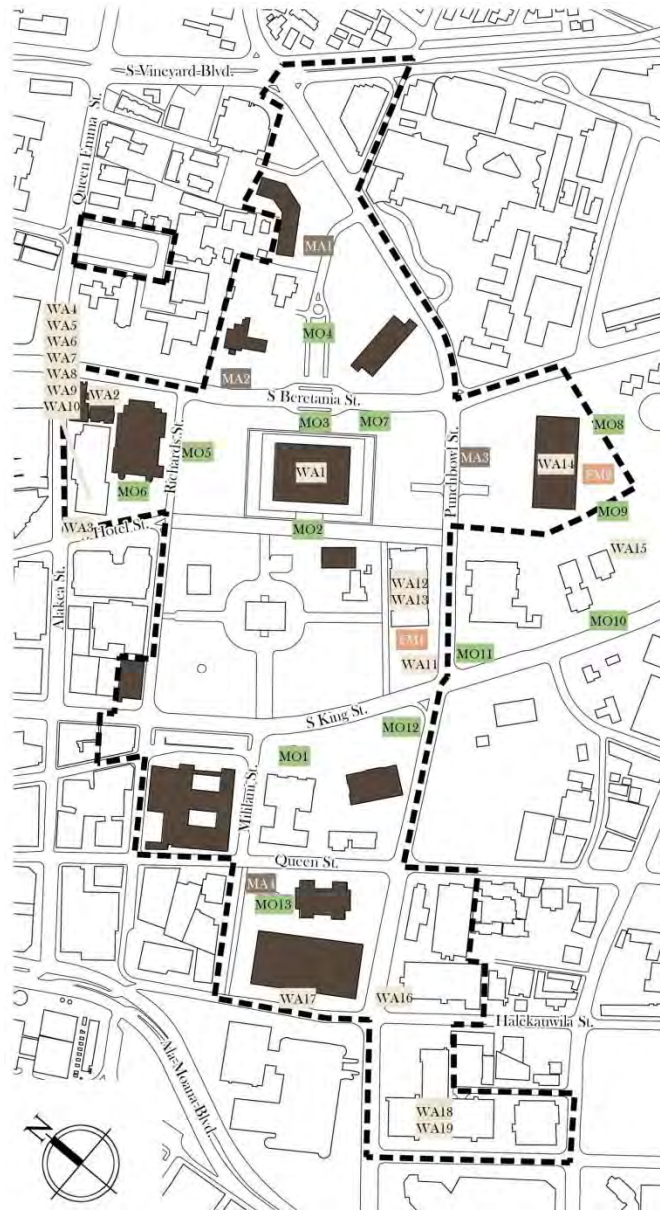


President Grover Cleveland Court

Theme Classifications

- Arts and Humanities
- Civic and Institutional
- Hawaiian History
- Industry and Commerce
- National History
- Science and Engineering
- Social and Humanitarian

Field Investigation of Monuments, Works of Art, and Memorial Markers



INVENTORY LIST

MO MONUMENTS

1. King Kamehameha I
2. The Spirit of Lili'uokalani
3. Father Damien
4. The Eternal Flame
5. Korean and Vietnam War Memorial
6. Moroccan Fountain
7. Liberty Bell
8. The Nagasaki Bell
9. Clock Tower
10. Liberty Bell of Aloha
11. 9-11 Eternal Flame
12. World War II Memorial
13. Ka Ho'oilina Maui Loa Fountain

WA WORKS OF ART

1. Aquarius
2. Leiopapa A Kamehameha
3. Bear and Cubs
4. My Father's Eyes Have Seen What I Dreamed
5. Family Structure
6. Double Waves
7. Aged Tree
8. Samara #XIV
9. Hawaiian Mountain Series I
10. A Summer Day in Court, 1843
11. Parent I and Young Girl
12. Ocean Current
13. Murals of the Legends of Hawaii
14. Kakahiaka, Awakea, Auinala, Po
15. Sky Gate
16. Passage
17. Hoaka (Crest)
18. In Her Lifetime
19. Kapa Lele O Hawaii and Kapa Apana Hawaii

MA MEMORIAL MARKERS

1. Korean National Association Headquarters Site 1914-1946
2. Aloha Oe
3. Korean Boarding School for Boys and Korean Methodist Church Site 1906-1918
4. President Grover Cleveland Court

FA FUTURE MONUMENTS

1. Patsy T. Mink Monument
2. Hawaii Law Enforcement Memorial
3. Emergency Responders Memorial (No Location)

DAGS/DLNR MANAGED BUILDINGS



Master Plan

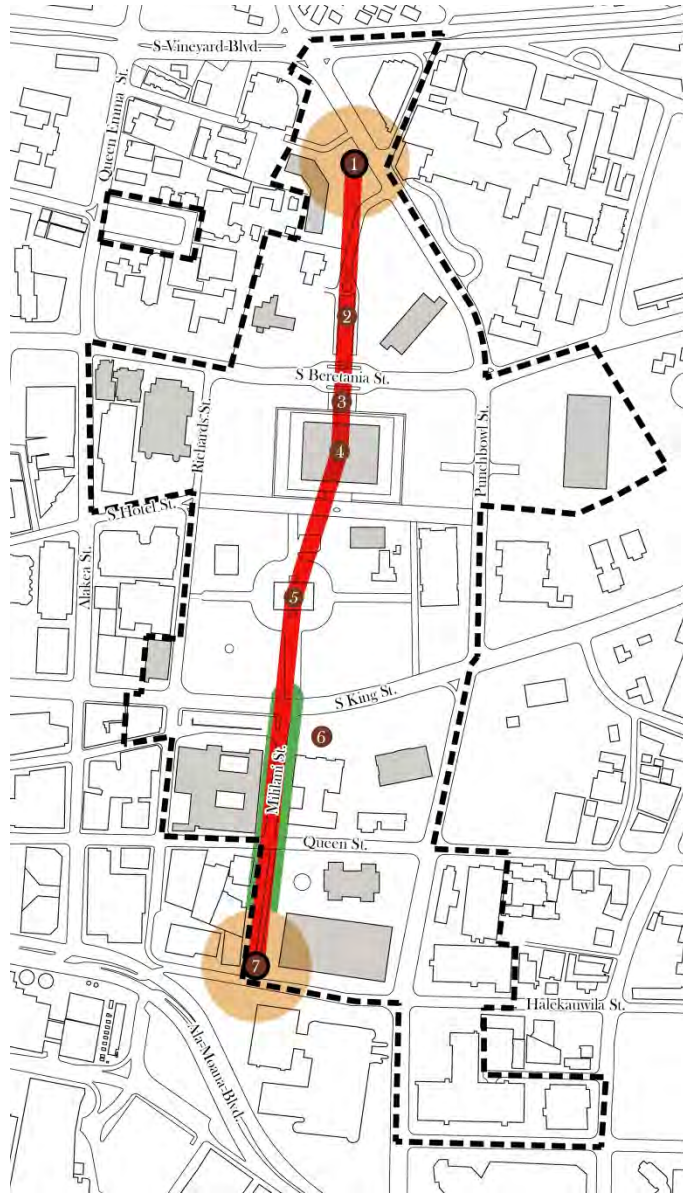


- Summary of Master Plan Concepts
- Summary of Master Plan Benefits



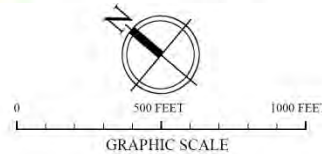
View of Downtown Honolulu from Punchbowl Lookout

Option 1 - Mauka-Makai Monument Mall Concept



KEY LEGEND

- Major Nodes
- Significant Buildings/Monuments
 1. The Spirit of Lili'uokalani Sculpture
 2. The Eternal Flame
 3. Father Damien
 4. Hawaii State Capitol
 5. Iolani Palace
 6. King Kamehameha I Sculpture
 7. Future Monument Location
- Mauka-Makai Axis Monument Mall Linkage
- Mīlilani St. Pedestrian Mall



Public Events and Festivals



Photo: Waikiki Spam Jam

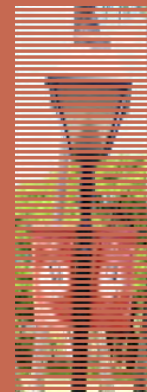


Photo: www.aloha-hawaii.com



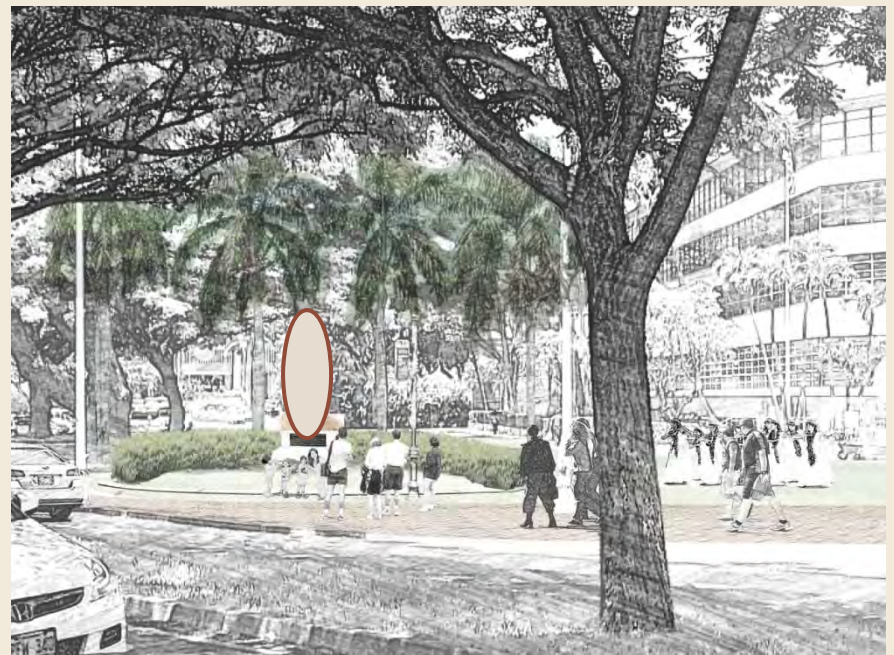
Photo: Aloha Festivals

Way-finding Materials



Mauka-Makai Monument Mall

Future Monument Location



Proposed New Location: In Front of Queen Liliuokalani
Building along Punchbowl Street

Mauka-Makai Monument Mall

Future Monuments/Markers Location



Proposed Locations: Along Mililani Pedestrian Mall

Case Study: Punchbowl Cemetery Markers



- Aligning the markers along the pedestrian path and Uniform spaces between markers

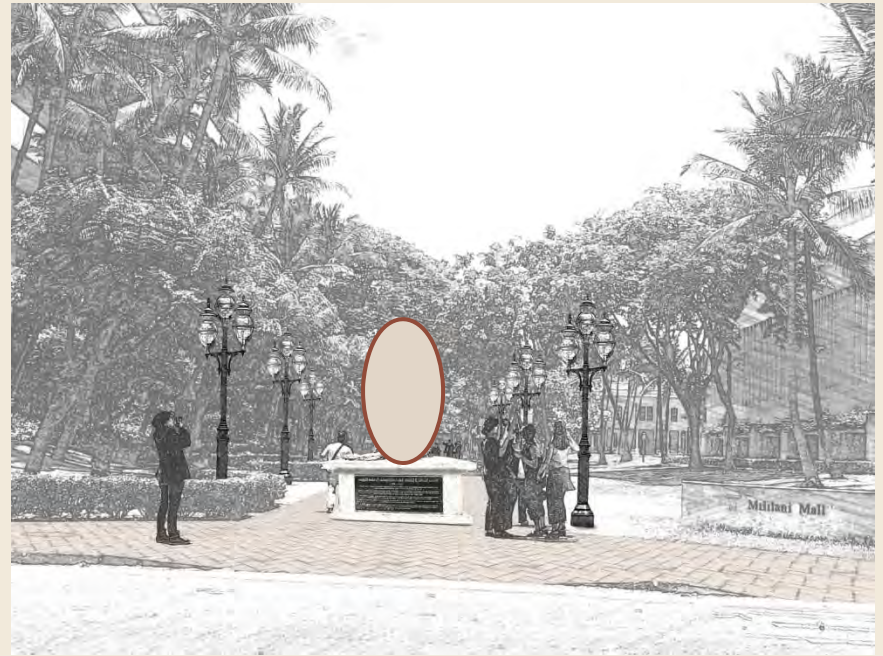
- Sitting areas between markers throughout the pedestrian mall provide resting areas for visitors.



- Various material options for bases and plaques promote unique characters

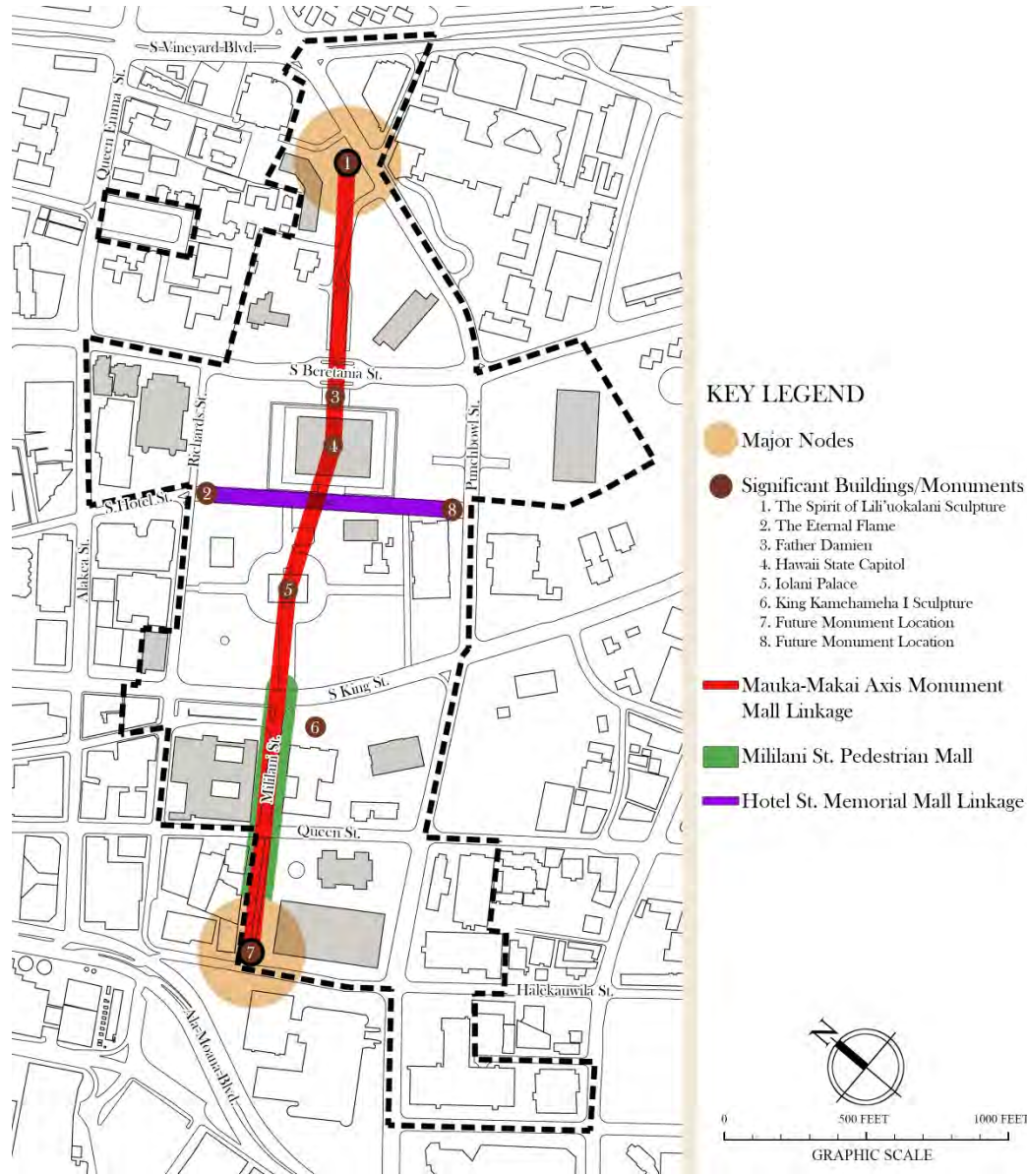
Mauka-Makai Monument Mall

Future Monument Location



Proposed Location: Entrance Node to Mililani Mall

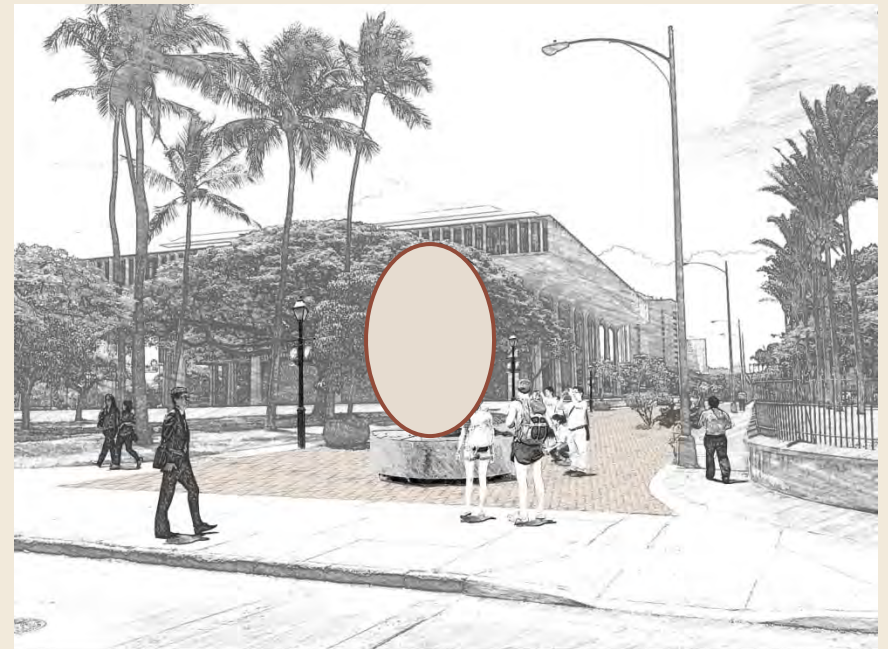
Option 2 - Hotel Street Memorial Mall Concept



- Connects significant monuments and buildings through Mauka-Makai Monument Mall linkage
- Provides pedestrian mall adjacent to State Capitol through Hotel St. Monument Mall linkage
- New areas for future monument locations
- New locations designated for future memorial markers and wall plaques

Hotel St. Memorial Mall

Future War Memorial Location



Proposed New Location: At the Entrance of Hotel Street
Memorial Mall along Richards Street

Hotel St. Memorial Mall

Memorial Plaques

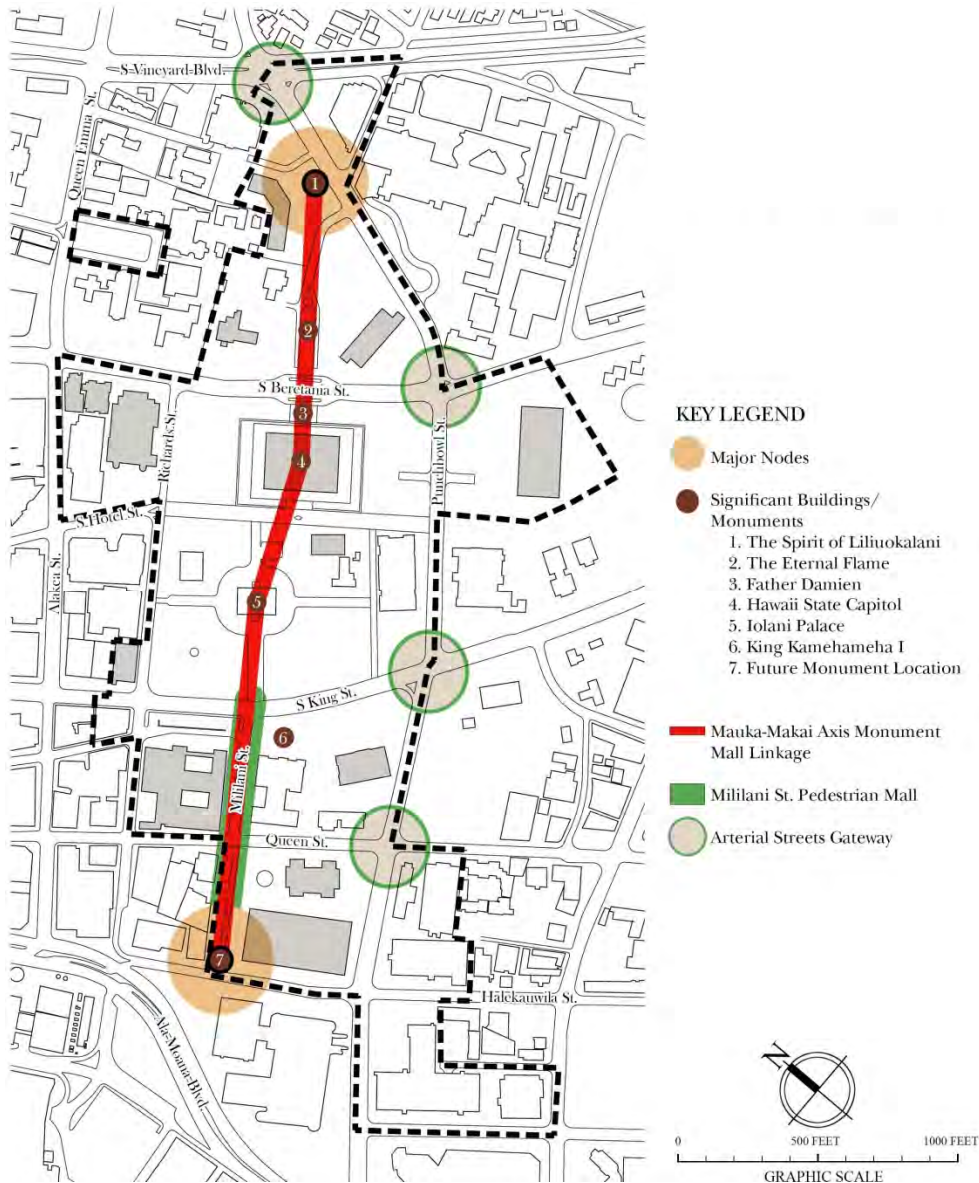


Proposed Location: Hawaii State Capitol Building Pond Wall

Capital District Gateways

Place-makers and Nodes

- Streetscapes
- Intersections
- View opportunities



Capital District Gateways

Vineyard Blvd and Punchbowl St Gateway



Location: Entrance of Capital District at intersection of
Vineyard Blvd and Punchbowl St.

Patsy Mink Statue

Future Monument Location



Proposed Location: In front of Library

Summary of Master Plan Benefits

- Delivers an organizing plan
- Provides comprehensive inventory of existing installations
- Facilitates pre-planning and pre-approval of new locations
- Proposes incremental phasing to match available funding
- Identifies gateways into Hawaii Capital Special District



Murals of the Legends of Hawaii

QUESTIONS?

Case Studies



- City of Savannah - 2011
- UH Hilo - Works of Art Master Plan 2003
- UH West Oahu - Works of Art Master Plan 2011
- Capitol District Walking Tours - Public Art and Historic Places

Field Investigation Inventory Example

Format

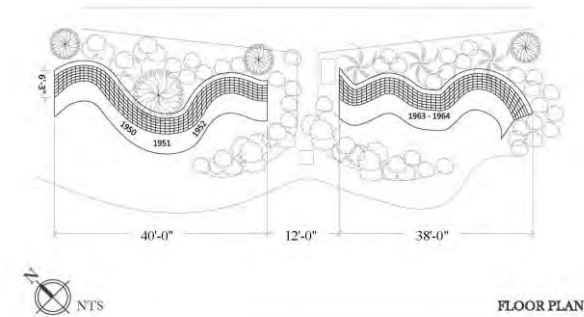
Excel File : Tabs - Category

MO5 - KOREAN AND VIETNAM WAR MEMORIAL

Location	Hawa'i State Capitol near the 'Iolani Palace
Artist	Hughes & Hughes of Honolulu
Title	Korean and Vietnam War Memorial
Date Installed	1994
Area	1,638 Square Feet
Media	Granite topped with a black lava rock
Commentary	The Hawaii Korean and Vietnam War Memorial is a serpentine wall that is six feet high and nearly 100 feet long. The memorial is made up of hundreds of one foot square pedestals engraved with the names of people from Hawaii who died during the Korean and Vietnam wars. There is a separate section for each of those wars.
Type	Monument
Funding	1898 Legislature



MO5 - KOREAN AND VIETNAM WAR MEMORIAL



MO5 - KOREAN AND VIETNAM WAR MEMORIAL



MONUMENT PHOTOS

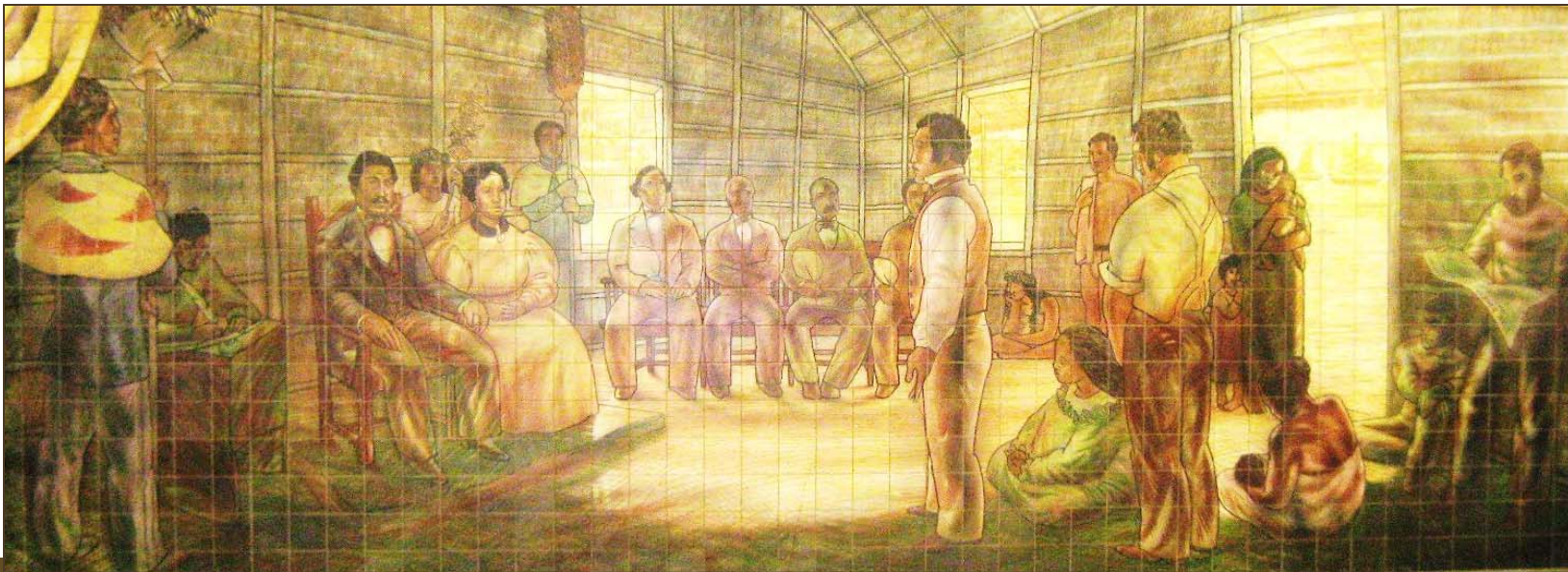
Page 1:
General Information
Location Map

Page 2:
Floor/Elevation Plans

Page 3:
Photos of Installation

Summary of Findings

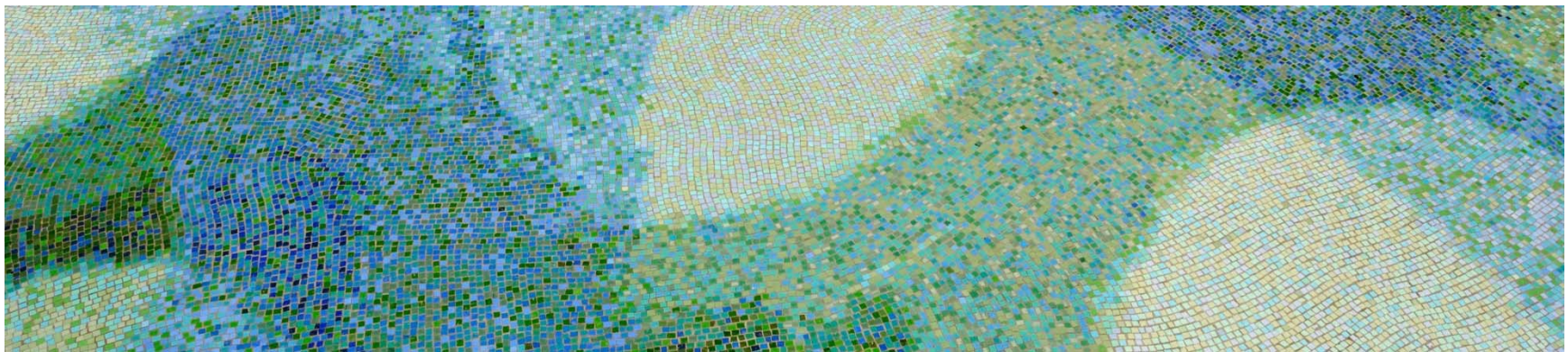
- No overall Master Plan for placement of installations
- DAGS/SFCA not pre-informed
- DAGS PB involvement is generally an implementer
- Availability of open space seems to be the main criteria
- Appropriateness of site locations is under prioritized
- Long term maintenance agreements has continuity gaps



A Summer Day in Court, 1843

Management Plan

- Preparation for Application
- Approval Process of Monuments and Works of Art
- Approval Process of Memorial Markers
- Final Approval



Aquarius

Preparation For Application

Hawaii Capital Special District

Application for New Monuments, Works of Art, and Memorial Markers

Contact Information (Artist)

Name			
Street Address			
City	ST	ZIP	
Phone	Fax		
E-Mail Address			

Contact Information (Donor)

Name			
Street Address			
City	ST	ZIP	
Phone	Fax		
E-Mail Address			

Type of Installation

☐ Monument ☐ Work of Art ☐ Memorial Marker

Title of Artwork Proposed: _____

Size in feet and inches: Width _____ Depth _____ Height _____

Please attach a 1-2 page narrative describing the proposed installation.

Definitions:

Monument - Any free-standing statue, art piece or other permanent object that is installed to commemorate a person, event or place located in an exterior location.

Work of Art - Any permanent work of art that is freestanding or attached to a structure. Work of Art can be installed on the exterior or interior of any public space.

Memorial Marker - Any permanent plaque with text embedded in the ground, mounted to structures, or erected on a freestanding pole for the purpose of informing the public about a person, event, or place.

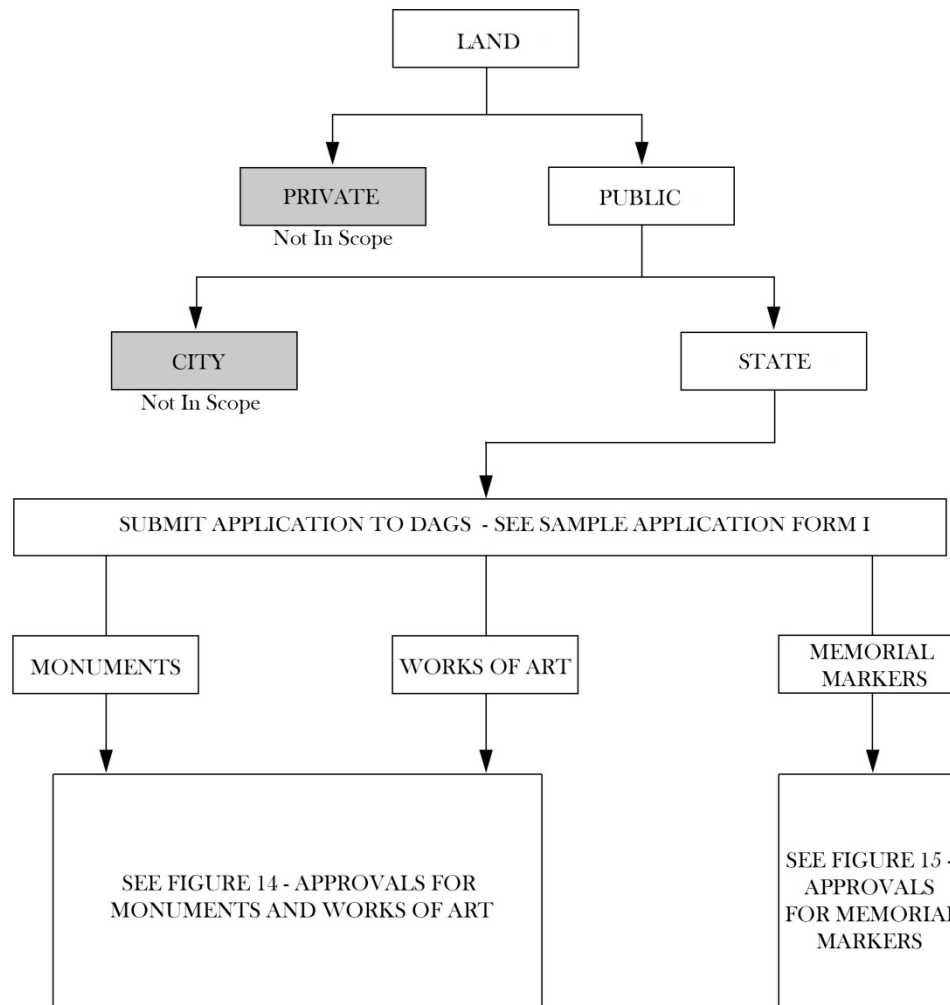
Funding, Budget, and Maintenance

☐ Private Funding ☐ Public Funding via Art in Public Places Program*

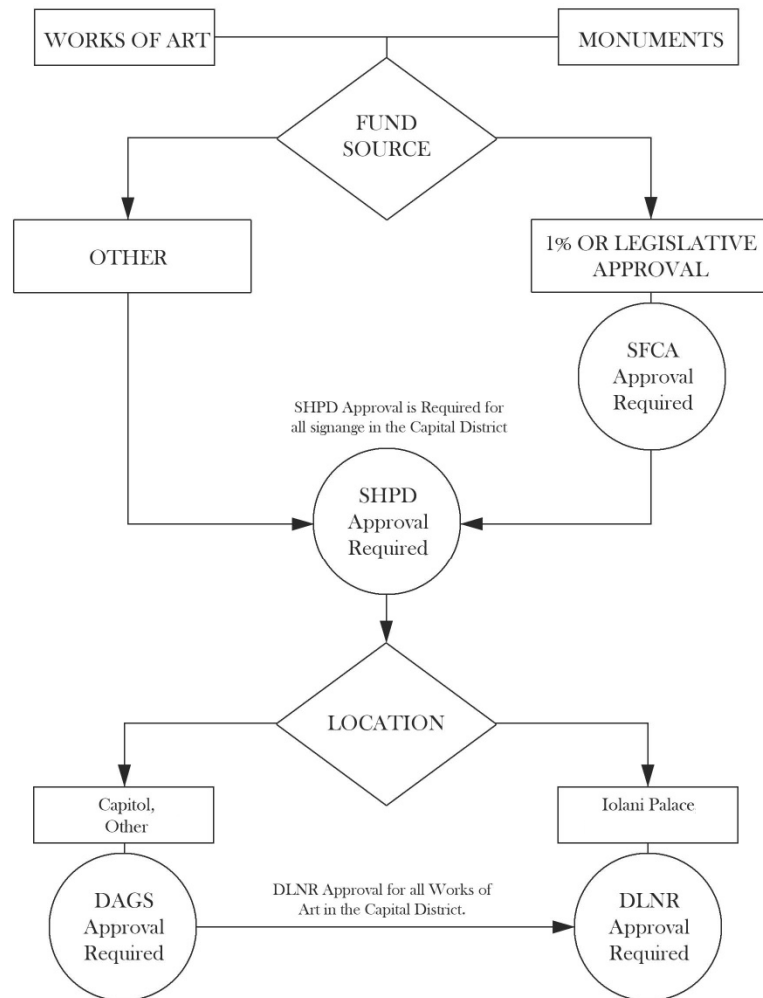
_____ Estimated Installation Cost _____ Estimated Yearly Maintenance Cost

*Provide Letter of Approval if State Foundation on Culture and the Arts (SFCA) has already approved the installation.

DAGS Application Process For Monuments, Works of Art, and Memorial Markers



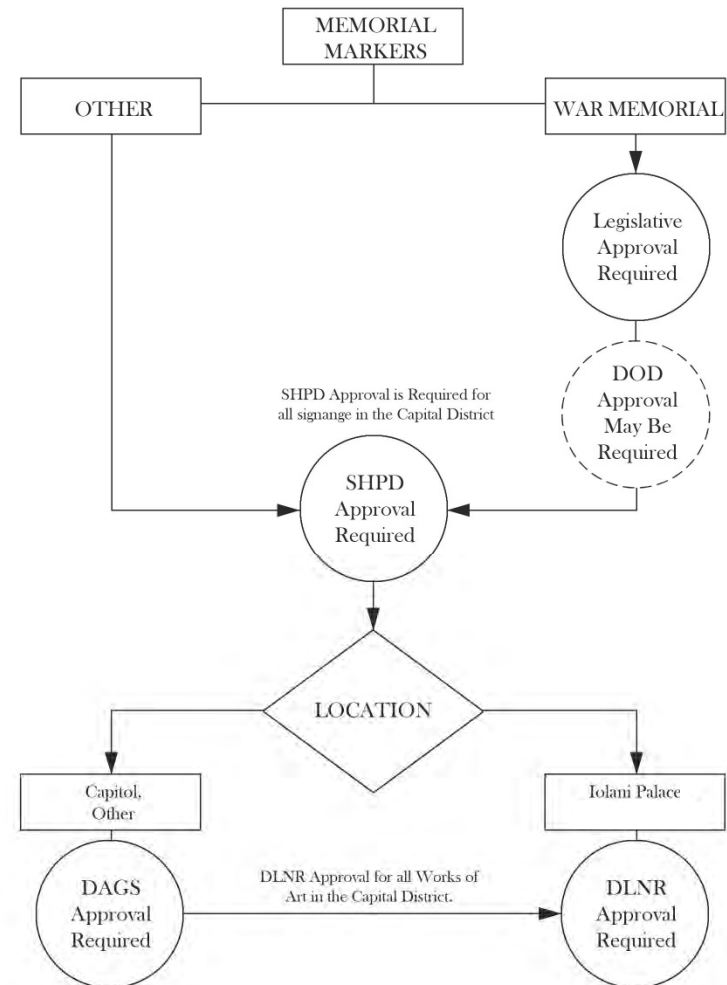
Approval Process of Monuments and Works of Art



KEY LEGEND

SFCA - State Foundation on Culture and the Arts
 DAGS - Dept. of Accounting and General Services
 DLNR - Dept. of Land and Natural Resources

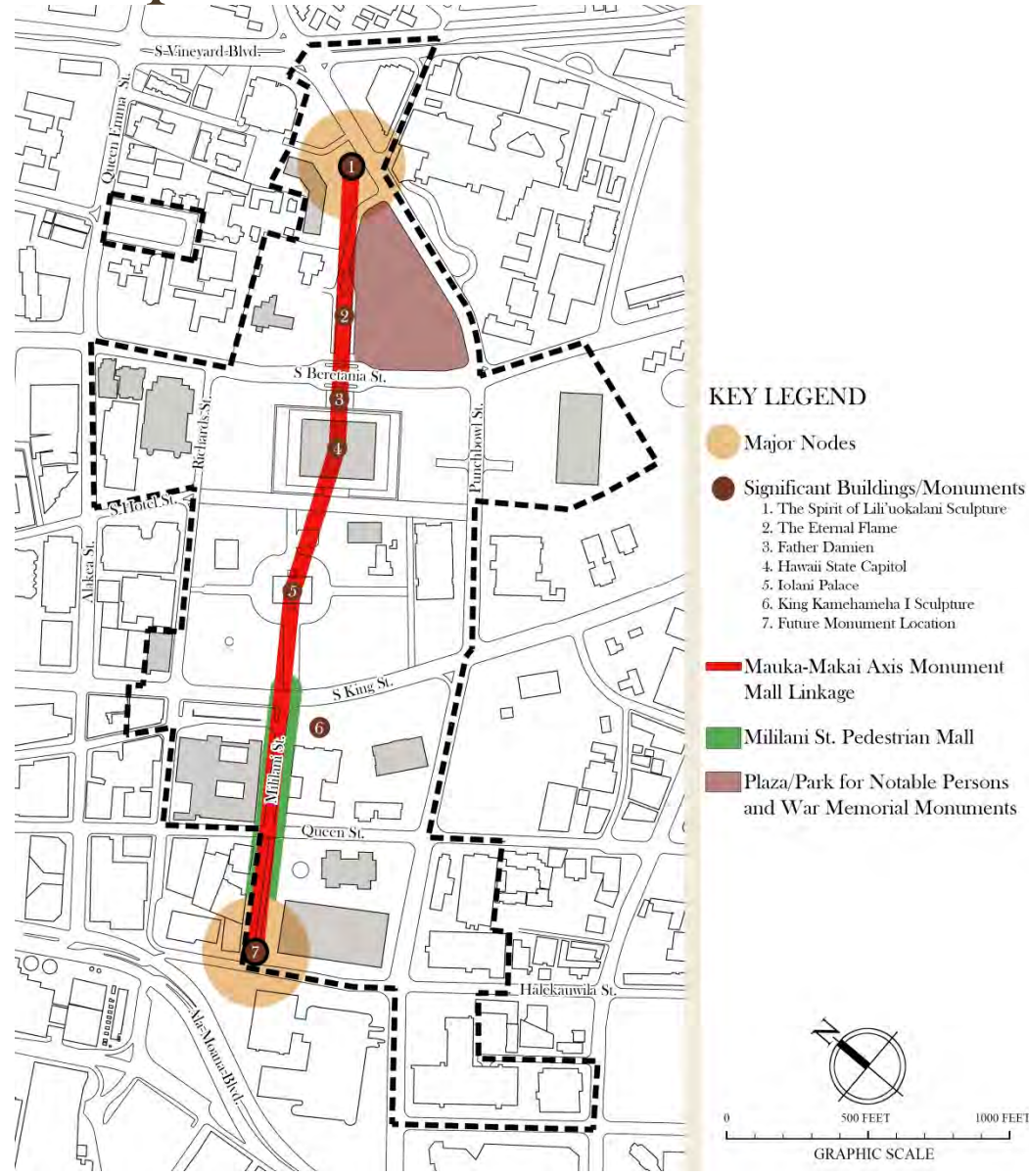
Approval Process of Memorial Markers



KEY LEGEND

SHPD - State Historic Preservation Division
 DOD - Department of Defense
 DAGS - Dept. of Accounting and General Services
 DLNR - Dept. of Land and Natural Resources

Option 3 – Kinau Hale and Capital Mall Concept

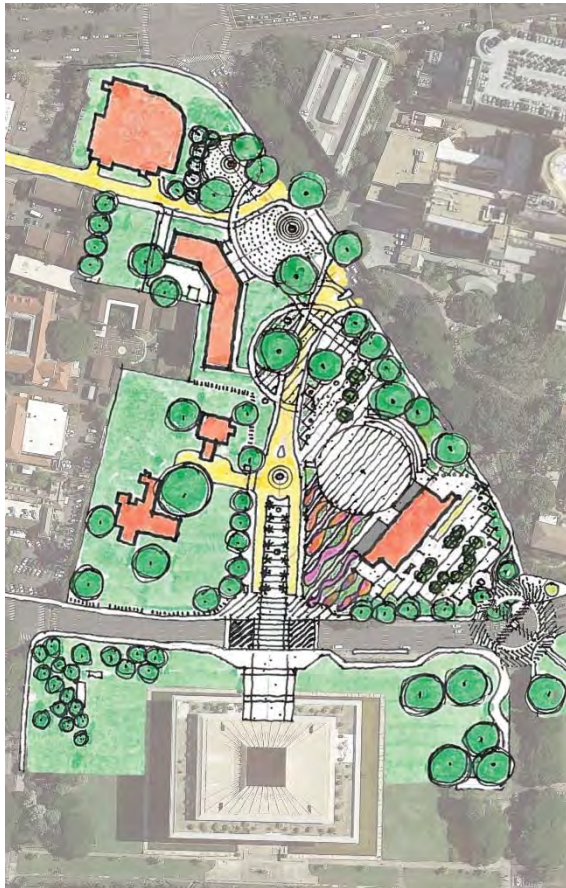


- Connects significant monuments and buildings through Mauka-Makai Monument Mall linkage
- New large area for Notable Persons and War Memorial Monuments
- New plaza/park allows for flexibility on the design of spaces

Capital District Master Plan 2016 Coordination

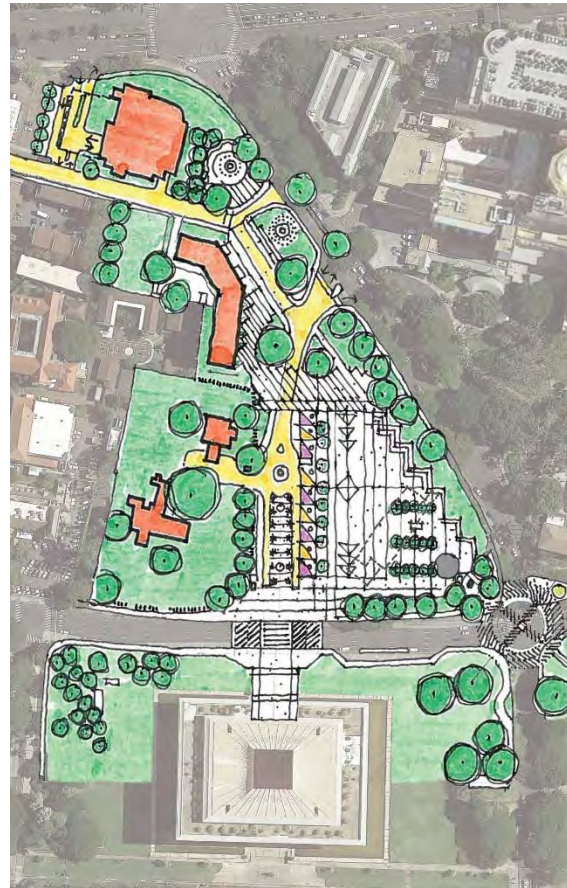


Kinau Hale Scheme 1



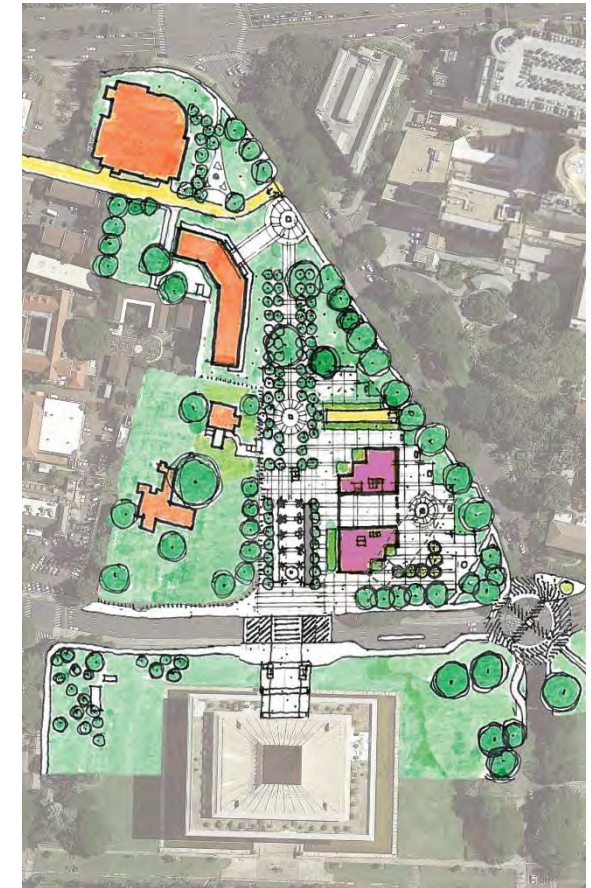
Plan 

Kinau Hale Scheme 2



Plan 

Kinau Hale Scheme 3



Plan 

Master Plan Implementation Timeline

Years	Concept 1: Mauka-Makai Monument Mall
3	<ul style="list-style-type: none">• Prepare future monument location at mauka (north) entrance node• Prepare future monuments/markers location at Mililani St. Mall
5	<ul style="list-style-type: none">• Install uniform way-finding materials• Provide space for future monument
10+	<ul style="list-style-type: none">• Close remaining Mililani St. to Pedestrian Mall



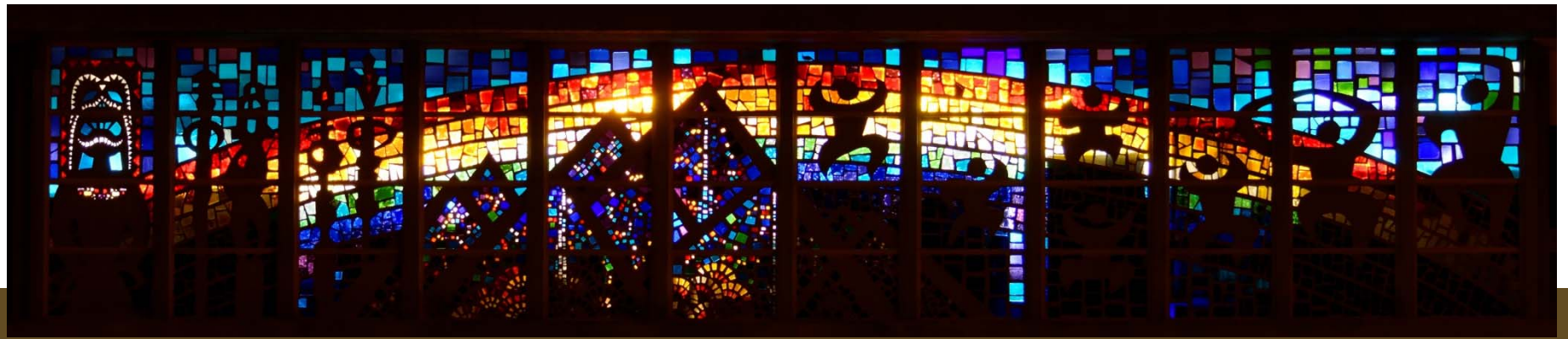
Master Plan Implementation Timeline

Years	Concept 2: Hotel Street Memorial Mall
3	<ul style="list-style-type: none">• Prepare future war memorial locations at Diamond Head and Ewa (East and West) nodes of entrance• Repave Hotel St. Pedestrian Mall with uniform way-finding materials• Prepare the State Capitol's pond wall for memorial plaques
5	<ul style="list-style-type: none">• Provide seating areas with shade• Prepare space for future war memorial
10+	



Master Plan Implementation Timeline

Years	Concept 3: Plaza/Park for Notable Persons Monuments and War Memorials
3	<ul style="list-style-type: none">• Prepare future monument and war memorial locations in coordination with the Mauka-Makai Monument Mall
5	<ul style="list-style-type: none">• Install uniform way-finding materials
10+	<ul style="list-style-type: none">• Reconstruct/Renovate/Demolish Kinau Hale in coordination with Capital District Master Plan 2016• Continue Installing uniform way-finding materials• Prepare area for Notable Persons Monuments





Liholiho, son of Kamehameha I and Keōpūolani

Born, ca1797

King Kamehameha II

May 20, 1819 – July 14, 1824

- Abolished the Kapu System
- First to sail to Europe
- Passed in London





Alexander 'Iolani Liholiho
February 9, 1834 - November 30, 1863

King Kamehameha IV
January 11, 1855 – November 30, 1863

Son of Mataio Kekūanāʻoʻa, Gov. of Oʻahu and Kīnaʻu, Kuhina Nui of the Kingdom (daughter of Kamehameha I & niece of Kaʻahumanu).

- Married to Emma Rooke, who became Queen Emma
- Son, Albert Edward Kauikeaouli Kaleiopapa a Kamehameha

Founded:

- Cathedral Church of Saint Andrew, Church of England
- 'Iolani College/School
- Queens Medical Center

PRINCE ALBERT



KING KAMEHAMEHA IV



QUEEN EMMA





Lot Kapuāiwa

December 11, 1830 – December 11, 1872

King Kamehameha V

November 30, 1863 – December 11, 1872

- Older brother of Alexander Liholiho
- 1864 Constitution of the Kingdom of Hawai'i
- 1865 Founded the Royal Order of Kamehameha I
- Hula restoration at his home in Moanalua



- William Charles Lunalilo
 - January 31, 1835 to February 2, 1891
- Mother, Kekāuluohi
 - Niece of Kamehameha I
 - Consort of Kamehameha III
 - Niece of Ka'ahumanu
- Father, Charles Kana'ina
- King Lunalilo, "People's King"
 - January 8, 1873 to February 2, 1891











Input from Royal Order of Kamehameha I (Hawai'i Chapter)

January 19, 2017

	King Kamehameha II	King Kamehameha IV	King Kamehameha V	King Lunalilo
<p>Suggested location of statues,</p> <p>*State property</p>	<p>Kona, Hawai'i Island</p> <p>Walker Park (rename and relocate AMFAC memorabilia)</p>	<p>Queens Hospital</p> <p>'Iolani School Campus</p> <p>St. Andrews Cathedral</p> <p>State Office Tower (S. Beretania St.)</p>	<p>Moanalua Gardens</p> <p>St. Andrews Cathedral</p> <p>Rotunda of Ali'iōlani Hale</p> <p>Park next to Kamehameha V Post Office (Merchant & Bethel)</p>	<p>Tomb adjacent to Kawaiaha'o Church</p> <p>Lunalilo Home (Hawai'i Kai)</p>
<p>Characteristics of location, e.g. public accessibility, pedestal, landscaping</p>	<p>Pedestal should be similar to the one created for Kamehameha I.</p> <p>A boundary around the statue to prevent people from getting on the statue.</p>			
<p>Attire of Ali'i, e.g. military, suit</p>	<p>Military Attire ('Iolani Palace painting)</p>	<p>Military Attire ('Iolani Palace painting)</p>	<p>Military Attire ('Iolani Palace painting)</p>	<p>Military Attire ('Iolani Palace painting)</p>
<p>Posture of Ali'i e.g. standing, outstretch arms, etc.</p>	<p>Must be standing</p> <p>Statue should be higher than people height.</p> <p>Statue should depict Ali'i in a "royal" pose.</p>			

	King Kamehameha II	King Kamehameha IV	King Kamehameha V	King Lunalilo
Symbols of reign incorporated e.g. a significant document, beloved pet etc.	Kāhili Pūlo'ulo'u, kapu sticks	Kāhili Sword of state	Royal Order crests Mottoes of the King Emblem of King Kamehameha V Cloaked in an ahu'ula, symbolizing the connection to his grandfather, Pai'ea	Royal Order crests Citizen King with symbols of the people Emblem of Lunalilo (royal crests)
Materials and finishes of statues.	Bronze Something lasting and durable			
Size of statues	No taller than the King Kamehameha I statue, but "hero" sized			
General Suggestions	<p>Likeness of Ali'i should be appropriate for the period; (e.g. Not an abstract interpretation like St. Damien.)</p> <p>Statues should not be in one location in the Palace grounds because it gives the appearance that they are being held "captive."</p> <p>The portraits of the Ali'i located in 'Iolani Palace can serve as possible models for the various statues of the Ali'i.</p>			

FEEDBACK FROM THE LUNALILO TRUST:

These projects are always interesting and offer the challenge of meeting the expectations of many audiences, melding a variety of opinions and capturing and publicly memorializing the essence of a person and their contributions and place in history.

Often associated with King Lunalilo are the following:

- Being referred to as “Lokomaika’i” or generous
- Called “The People’s King”
- First elected king
- Supporter of a more liberal constitution that perhaps diminished the role of the monarchs – wanted a bicameral legislative structure
- Allowing men to vote without the restriction of having land rights
- First of the large landholding ali’i to create a charitable trust for his people
- Chose to be laid to rest in a place aside from other ali’i
- Poet, song writer
- Leaving his lands for kūpuna in need
- Having been denied a 21-gun salute, to have 21 claps of thunder at his procession from Mauna ‘Ala to Kawaiaha’o Church
- Supporting segregation of those with Hanson’s Disease – for public health reasons

Any sculpture or statue depicting him would take the above into consideration.

- Viewing the statue, in line with his status is to have some elevation, but limited and minimal to accentuate his being among the people. It is not one that persons would have to look up to.
- Life size is always difficult when it comes to statue being visible, unless in a garden setting where it is supposed to blend in with the landscape, so larger than life
- Figurative sculptures are most interesting as it allows the artist the freedom to explore alternative ways to express or stimulate emotions. These though, often come under the most scrutiny and criticism. However, in the case of a monarch, it may be interpreted as less dignified.
- Likenesses in realism are very tough – rarely do justice to the person’s image.
- Bronze is the most durable with a minimal pedestal of the same material
- Would be interesting a very fitting to have kūpuna images, as part of the sculpture, with the king – possibly in different kind of bronze

The following inscriptions be considered:

“... it is desirable that the wishes of the Hawaiian people be consulted as to a successor to the Throne...”

“... I desire to submit the decision of my claim to the voice of the people...”

“... for the use and accommodation of poor, destitute and infirm people of Hawaiian (aboriginal) blood or extraction giving preference to old people...”

- Placement – taking into consideration that he was born at Pohukaina and lived/died at Haimoeipo would best be at the current site of what was previously Haimoeipo – the State Capital. (If the statue of Lili’uokalani is to be repositioned elsewhere, that would be ideal as he stood for democracy, bicameral government, and election of the head of the nation.) Within the rotunda would be a great consideration.

Kawaiaha’o Church is not as accessible, but somewhat fitting – less traffic than other areas, but a great place for contemplation and a smaller, life sized statue would be scaled appropriately.

Current Lunalilo Home is too remote to be appreciated by more people, and there is no guarantee that the site would be there as Lunalilo Home in the future.

No great public area in Kewalo mauka that comes to mind.

- Although not common for monarchs in statue form, to be seated may be pleasant – surrounded by kūpuna with canes, hunched, blind, crippled, emaciated – all make for a compelling tribute to a person who cared about those who were old and not fully appreciated by society. Especially since he, himself, was not perfect and succumbed to sickness – like many Hawaiian and many royals. Having representation of kupuna on the pedestal upon which he stands seems like he “stands on them as a foundation – kind of weird, but if he were holding them up (a reversal of traditional) and reaching up into the heavens, that would be intriguing and very thought provoking.

King Kalākaua

Information Sharing by Kippen de Alba Chu

1. Significant characteristics
 - a. How divisive the election was between King Kalākaua and Queen Emma
 - b. People did not see Kalākaua as a ruler because he did not have the Kamehameha Royal Line
 - c. Used arts and culture to defy his role in Hawaiian society
 - i. Bringing back lost arts
 - ii. Actively bring back the past and marry with modern times
 - iii. Served as a bridge with ancient Hawaiian to Modern Hawaii
 - d. First head of state to have dinner at the White House
2. Suggested Locations
 - a. Manamana
 - b. Hulihe`e Palace (Kailua-Kona, Ali`i Drive)
 - c. Masonic Lodge

Possible Statue locations: On or near the property of Washington Place
Queen's Surf

Legacy Queen Lili'uokalani

KAMEHAMEHA PAIEA fought to unite the Kingdom of Hawai'i.
LILI'UOKALANI persevered to restore the Kingdom of Hawai'i.

"HAWAII'S STORY BY HAWAII'S QUEEN LILI'UOKALANI" is a testament of history and insight that she entrusted to her people.

That they may live—she sacrificed her crown that her people would live. As a historian, in recording the illegal overthrow of the Hawaiian Kingdom, she empowered her people with the path of reconciliation to which she dedicated her life. Lili'uokalani was politically astute in advising her brother, King David Kalakaua, who named her successor to the throne. Her lasting legacy—the Queen Lili'uokalani Children's Trust—continues to provide for orphaned and indigent Hawaiian children. As a Christian she instilled the spirit of forgiveness and hope. As composer she inspired and lifted generations with song. As Ali'i she endowed her people with her mana to remain steadfast to their heritage.

She was gifted and beloved. She endures as Ali'i. 'ONIPA'A



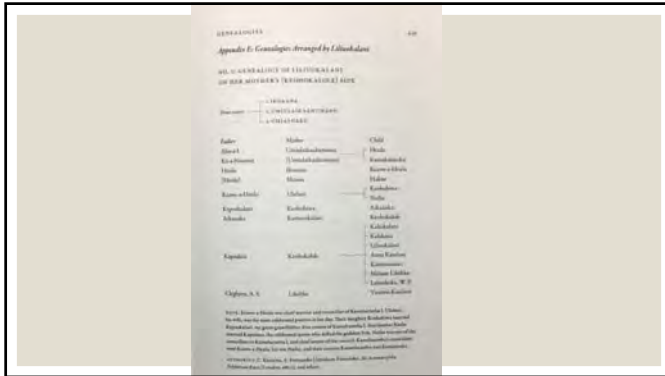
440 APPENDIX B

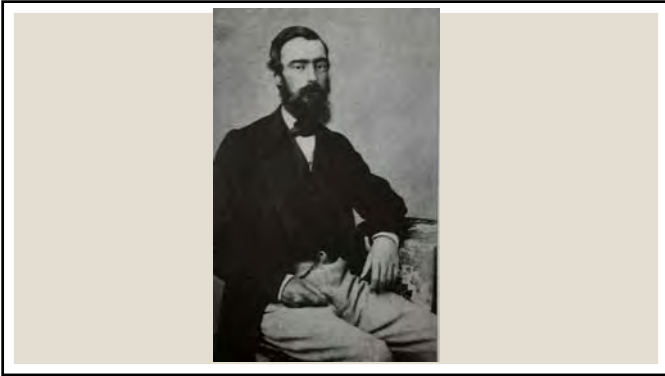
NO. 1: DESCENDENT OF LILI'UOKALANI
ON HER FATHER'S (KAPA'AKA) SIDE

KIAWHEKAIHALIUKAMOEU, KING OF HAWAII

Father	Mother	Child
Kamehameha I (1795-1819)	Kiwaokalani (1795-1819)	Kiwaokalani (1795-1819)
Kamehameha II (1819-1824)	Kiwaokalani (1795-1819)	Kiwaokalani (1795-1819)
Kamehameha III (1824-1854)	Kiwaokalani (1795-1819)	Kiwaokalani (1795-1819)
Kamehameha IV (1854-1863)	Kiwaokalani (1795-1819)	Kiwaokalani (1795-1819)
Kamehameha V (1863-1872)	Kiwaokalani (1795-1819)	Kiwaokalani (1795-1819)
Kamehameha VI (1872-1878)	Kiwaokalani (1795-1819)	Kiwaokalani (1795-1819)
Kamehameha VII (1878-1891)	Kiwaokalani (1795-1819)	Kiwaokalani (1795-1819)
Kamehameha VIII (1891-1893)	Kiwaokalani (1795-1819)	Kiwaokalani (1795-1819)
Kamehameha IX (1893-1894)	Kiwaokalani (1795-1819)	Kiwaokalani (1795-1819)
Kamehameha X (1894-1899)	Kiwaokalani (1795-1819)	Kiwaokalani (1795-1819)
Kamehameha XI (1899-1909)	Kiwaokalani (1795-1819)	Kiwaokalani (1795-1819)
Kamehameha XII (1909-1915)	Kiwaokalani (1795-1819)	Kiwaokalani (1795-1819)
Kamehameha XIII (1915-1918)	Kiwaokalani (1795-1819)	Kiwaokalani (1795-1819)
Kamehameha XIV (1918-1921)	Kiwaokalani (1795-1819)	Kiwaokalani (1795-1819)
Kamehameha XV (1921-1924)	Kiwaokalani (1795-1819)	Kiwaokalani (1795-1819)
Kamehameha XVI (1924-1927)	Kiwaokalani (1795-1819)	Kiwaokalani (1795-1819)
Kamehameha XVII (1927-1930)	Kiwaokalani (1795-1819)	Kiwaokalani (1795-1819)
Kamehameha XVIII (1930-1933)	Kiwaokalani (1795-1819)	Kiwaokalani (1795-1819)
Kamehameha XIX (1933-1936)	Kiwaokalani (1795-1819)	Kiwaokalani (1795-1819)
Kamehameha XX (1936-1939)	Kiwaokalani (1795-1819)	Kiwaokalani (1795-1819)
Kamehameha XXI (1939-1942)	Kiwaokalani (1795-1819)	Kiwaokalani (1795-1819)
Kamehameha XXII (1942-1945)	Kiwaokalani (1795-1819)	Kiwaokalani (1795-1819)
Kamehameha XXIII (1945-1948)	Kiwaokalani (1795-1819)	Kiwaokalani (1795-1819)
Kamehameha XXIV (1948-1951)	Kiwaokalani (1795-1819)	Kiwaokalani (1795-1819)
Kamehameha XXV (1951-1954)	Kiwaokalani (1795-1819)	Kiwaokalani (1795-1819)
Kamehameha XXVI (1954-1957)	Kiwaokalani (1795-1819)	Kiwaokalani (1795-1819)
Kamehameha XXVII (1957-1960)	Kiwaokalani (1795-1819)	Kiwaokalani (1795-1819)
Kamehameha XXVIII (1960-1963)	Kiwaokalani (1795-1819)	Kiwaokalani (1795-1819)
Kamehameha XXIX (1963-1966)	Kiwaokalani (1795-1819)	Kiwaokalani (1795-1819)
Kamehameha XXX (1966-1969)	Kiwaokalani (1795-1819)	Kiwaokalani (1795-1819)
Kamehameha XXXI (1969-1972)	Kiwaokalani (1795-1819)	Kiwaokalani (1795-1819)
Kamehameha XXXII (1972-1975)	Kiwaokalani (1795-1819)	Kiwaokalani (1795-1819)
Kamehameha XXXIII (1975-1978)	Kiwaokalani (1795-1819)	Kiwaokalani (1795-1819)
Kamehameha XXXIV (1978-1981)	Kiwaokalani (1795-1819)	Kiwaokalani (1795-1819)
Kamehameha XXXV (1981-1984)	Kiwaokalani (1795-1819)	Kiwaokalani (1795-1819)
Kamehameha XXXVI (1984-1987)	Kiwaokalani (1795-1819)	Kiwaokalani (1795-1819)
Kamehameha XXXVII (1987-1990)	Kiwaokalani (1795-1819)	Kiwaokalani (1795-1819)
Kamehameha XXXVIII (1990-1993)	Kiwaokalani (1795-1819)	Kiwaokalani (1795-1819)
Kamehameha XXXIX (1993-1996)	Kiwaokalani (1795-1819)	Kiwaokalani (1795-1819)
Kamehameha XL (1996-1999)	Kiwaokalani (1795-1819)	Kiwaokalani (1795-1819)
Kamehameha XLI (1999-2002)	Kiwaokalani (1795-1819)	Kiwaokalani (1795-1819)
Kamehameha XLII (2002-2005)	Kiwaokalani (1795-1819)	Kiwaokalani (1795-1819)
Kamehameha XLIII (2005-2008)	Kiwaokalani (1795-1819)	Kiwaokalani (1795-1819)
Kamehameha XLIV (2008-2011)	Kiwaokalani (1795-1819)	Kiwaokalani (1795-1819)
Kamehameha XLV (2011-2014)	Kiwaokalani (1795-1819)	Kiwaokalani (1795-1819)
Kamehameha XLVI (2014-2017)	Kiwaokalani (1795-1819)	Kiwaokalani (1795-1819)

NOTE: Information is given in parentheses, as in the case of the great-grandfather, Kamehameha I, who was the first to be crowned as King of Hawaii.

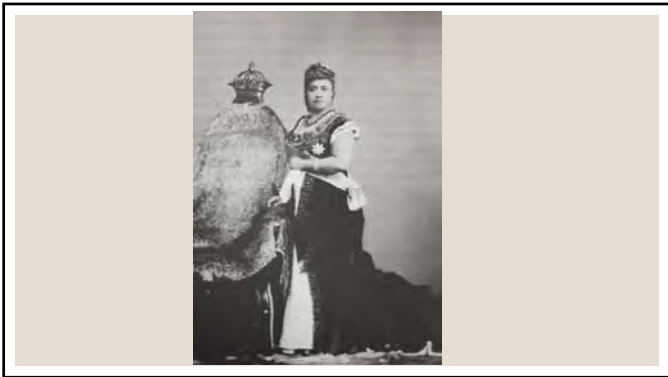
[illegible][illegible]



























IDENTIFYING AN APPROPRIATE SITE FOR THE *Spirit of Lili'uokalani*

HAWAI'I STATE CAPITOL (Hotel St. Mall)

Painful, Historical Memories

1. The current site reenacts the painful history of Queen Lili'uokalani. Her statue stands where history left her—outside of 'Iolani Palace, her seat of government.
2. 'Iolani Palace protocol assigned each gate to the following: Likeke for family members; King St. for ceremonial events; Richards St. for official business; and Hotel St. entrance for retainers. Discounting protocol established by King Kalākaua, the Queen's statue is on Hotel St. Mall.
3. On February 7, 1895, the San Francisco Examiner published an image of the Queen being taken up the back steps of 'Iolani Palace. The caption read: "Ex-Queen Liliuokalani mounting the steps to the government house after her arrest." (*The image and caption were intended to mock and insult the Queen.*)

Insult and Humiliation

1. The current site reenacts the painful history of Queen Lili'uokalani. Her statue stands behind the government that succeeded the Kingdom of Hawai'i.*
2. The Queen's throne was raised on an elevated platform—a tribute to her nobility as an Ali'i. In contrast, people look down on her as a commoner as they exit the back steps of the Capitol.*
3. Viewed from the front of the State Capitol, her statue is split in half—diminishing her dignity and person as she stands partially hidden from full public view;* and
4. Because of the conflicting views on the direction the Queen's statue would face, the Jury Commission called a special meeting. Their frustration ended in tears when they discovered her statue had already been cemented in place with her back to 'Iolani Palace.; and worse

Source: Carmelita Saffery, Sec. to Po'omai Kawanānākoa

5. Portable toilets frame the *Spirit of Lili'uokalani* statue to accommodate crowds*

* *Though unintended, the memory of Queen Lili'uokalani must not suffer continuing insult or humiliation.*

HAWAI'I CAPITOL SPECIAL DISTRICT MASTER PLAN (On Punchbowl)

Mauka-Makai Monument Mall

1. Proposed new location for *Spirit of Lili'uokalani* statue in front of the Lili'uokalani Building along Punchbowl Street in a garden setting of indigenous plants.
2. The building lacks distinction or relevance to her legacy. (Building houses DOE functions)
3. The site lacks prominence and historical significance.

MILLER STREET PLAZA (Site of The Eternal Flame)

Prominence and Historical Relevance

1. The preferred site of the Jury Commission was at, or near, Washington Place, her residence. Note: After the sites of the Jury Commission—Washington Place, 'Iolani Palace and the capitol lawn across Washington Place—were denied, Marianna Pineda selected the current site because "... the Queen lived through a transition period and the banyan tree provided a beautiful background which seemed to symbolize the enduring qualities of Hawaiian life." — Source: SFCA Records
2. In 1894, the Queen acquired the property adjoining Washington Place from Dr. Alex McKibbin (Originally owned by William Miller, Great Britain Ambassador) and built Beretania Cottage where Dr. McKibbin planned to treat tuberculosis patients. — Source: Bureau of Conveyance; Wikipedia
3. The Queen's statue will face the statue of Saint Damien on whom she conferred the Royal Order of Kalākaua, and face towards 'Iolani Palace and King Kamehameha.
4. The *Spirit of Lili'uokalani* must be elevated on a platform and pedestal, in a prominent setting befitting the Queen's royal majesty among all the Ali'i, to preserve, in perpetuity, the Kingdom of Hawai'i. The Ali'i must also be attended with kāhili and pulo'ulo'u, to symbolize their rank as Hawaiian nobility.