

**STATE FOUNDATION ON CULTURE AND THE ARTS**  
**General Board of Commissioners Meeting**  
**250 South Hotel Street, Honolulu, Hawai`i 96813**

*The meeting will be closed to the public as permitted by the Governor's supplementary proclamations, under which board members will participate by interactive conference technology*

**Wednesday, September 15, 2021 at 10:00 a.m.**

**AGENDA**

- 1. Call to Order**
- 2. Approval of the Agenda**
- 3. Statements from the Public**
- 4. Approval of Minutes of Previous Meeting held on July 21, 2021**
- 5. New/Continuing Business for Discussion and/or Action:**
  - a. American Rescue Plan Grant Panel recommendations for Organizations FY22**
  - b. Artists in the Schools Recommendations FY22**
  - c. Art Bento Artistic Teaching Partner Recommendations FY22**
  - d. Gift/Purchase Recommendations for the Art in Public Places Collection**
  - e. Schedule Recommendations Art Acquisition Selection Committee**
  - f. Daniel K. Akaka State Veterans Home Art Advisory Committee recommendation**
- 6. Announcements**
- 7. Adjournment**

*If you require an auxiliary aid or accommodation due to a disability, or to request a link to the virtual meeting, please contact SFCA at (808) 586-0303 or by email at: [sara.b.newell@hawaii.gov](mailto:sara.b.newell@hawaii.gov) by September 13, 2021.*

**STATE FOUNDATION ON CULTURE AND THE ARTS**  
**General Board of Commissioners Meeting\***  
**250 South Hotel Street, Honolulu, Hawai'i 96813**

*The meeting was closed to the public as permitted by the Governor's supplementary proclamations, under which board members will participate by interactive conference technology*

**Zoom Meeting ID: 845 8682 5811**

**Wednesday, July 21, 2021 at 11:00am**

**MINUTES**

**Members Present**

Lloyd Unebasami, Chairperson, At-Large; Susana Browne, At-Large; Jane Clement, Hawaii County; Kālewa Correa, At Large; Ronald Michioka, Honolulu County; Clyde Sakamoto, Maui County; Allison Wong, At-Large.

**Member Absent**

Nalani Brun, Kauai County, Karen Tiller Polivka, At-Large.

**Other Present via Zoom**

Aldric Ulep, Budget Analyst, House Committee on Finance, Eric Chang, East West Center.

**SFCA Staff Present**

Jonathan Johnson, Executive Director; Karen A. Ewald, Director, APP Program & Hawai'i State Art Museum, Sara Beth Newell, Administrative Services Assistant, Rhiannon Keene, Secretary, Danica "Nikki" Rosengren, Arts Education, Elizabeth Baxter, Curator, Kamakani Konia, Project Manager, Alex Skees, Project Manager.

**1. Call to Order**

Chairperson Lloyd Unebasami called the meeting to order at 11:00 a.m.

**2. Approval of the Agenda**

A motion to approve the agenda was made by Susan Browne and seconded by Allison Wong. The motion to approve the agenda was approved unanimously.

**3. Statement from the Public**

Chairperson Lloyd Unebasami called for public statements. There were none.

**4. Approval of Minutes of Previous Meeting held on May 19, 2021**

A motion to approve the minutes of the Board meeting held on May 19, 2021 was made by Ronald Michioka and seconded by Susan Browne. The motion to approve the minutes was approved unanimously.

**5. New/Continuing Business for Discussion and/or Action**

**5.a. Discussion and or action regarding FY22 Budget**

Executive Jonathan Johnson gave a brief overview of the budget for SFCA, reflecting the agency's implementation of all expenditures during FY22. The budget of operational expenditure plan is expected to be prepared in August and submitted for departmental and administrative approval. A motion to approve the draft budget as presented with the provision that the Executive Director has the authority to adjust as needed was made by Allison Wong and seconded by Kālewa Correa. The motion passed unanimously.

5.b. Artist in the Schools Recommendations FY22

Grants and Programs Committee Chair Ronald Michioka presented the grants committee recommendation to fund all 97 schools that applied for Artists in the school's grants. Funding to include a mix of State, Federal and private funds from the Hawaii Community Foundation.

SFCA State Funds: \$339,000

SFCA Federal Funds: \$89,000

Hawaii Community Foundation: \$229,846

TOTAL Artists in the Schools funding \$657,846

Oahu Schools: Aikahi Elementary School, Ala Wai Elementary School, Aliamanu Elementary School, Blanche Pope Elementary School, DreamHouse 'Ewa Beach Public Charter School, Enchanted Lake Elementary School, Fern Elementary School, Hahaione Elementary School, Haleiwa Elementary School, He'eia Elementary, Hokulani Elementary School, James Campbell High School, Kaaawa Elementary School, Kaelepulu Elementary School, Kahala Elementary School, Kailua Intermediate School, Kaimuki Middle School, Kalihi Uka Elementary School, Kamaile Academy Public Charter School, Kaneohe Elementary School, Kaohao Public Charter School, Kapolei High School, Ke Kula 'o Samuel M. Kamakau Laboratory Public Charter School, Lanakila Elementary School, Linapuni Elementary School, Makakilo Elementary School, Malama Honua Public Charter School, Mauka Lani Elementary School, Maunawili Elementary School, Mililani Mauka Elementary School, Mililani Uka Elementary School, Noelani Elementary School, Nuuanu Elementary School, Palolo Elementary School, Pearl City High School, Prince Jonah Kuhio Elementary School, Princess Kaiulani Elementary School, Princess Likelike Elementary School, Queen Kaahumanu Elementary School, Red Hill Elementary School, Salt Lake Elementary School, Voyager Public Charter School, Waialae Public Charter, Waialua Elementary School, Waianae Elementary School, Waiau Elementary School, Waikele Elementary School, Waikiki Elementary School.

Maui, Molokai and Lanai Schools: Hana Elementary School, Hawaii Technology Academy, Maui PCS, Iao Intermediate School, Kihei Elementary School, King Kekaulike High School, Kula Elementary School, Lihikai Elementary School, Lokelani Intermediate School, Makawao Elementary School, Maui Waena Intermediate School, Paia Elementary School, Pomaikai Elementary School, Pukalani Elementary School, Puu Kukui Elementary School, Waihee Elementary School, Wailuku Elementary School. Molokai School, Kaunakakai Elementary School, Kilohana Elementary School, Kualapuu Public Charter School, Maunaloa Elementary School. Lanai School, Lanai High & Elementary School.

Hawaii Schools: Connections PCS, Ernest Bowen DeSilva Elementary School, Ha'aheo Elementary School, Hawaii Academy for Arts & Science Public Charter School, Hawaii Technology Academy, Kona PCS, Hilo Union Elementary School, Holualoa Elementary School, Honaunau Elementary School, Hookena Elementary School, Innovations Public Charter School, Kanu o ka Aina NCPCS, Ka'u High & Pahala Elementary, Keaau High School, Kealakehe Elementary School, Konawaena Elementary School, Kua O Ka La Public Charter School, The Volcano School of Arts and Sciences Public Charter School, Waikoloa Elementary and Middle School, Waimea Elementary School, West Hawaii Explorations Academy.

Kauai Schools: Hanalei Elementary School, Hawaii Technology Academy, Kauai PCS, Kalaheo Elementary School, Kanuikapono Public Charter School, Kapaa High School, Kawaihini Public Charter School, Kilauea Elementary School.

A motion to approve the panelists recommendation for all 97 applications to be funded, with follow up for 7 APP Grant applications and 7 General applications as presented was made by Clyde Sakamoto and seconded by Susan Browne. The motion passed unanimously.

#### 5.c. SFCA Individual Artist Program FY22

A motion to accept the SFCA Individual Artist Program FY22 and the propose two alternating calls for application each year of a fiscal biennium (Individual Artist Fellowship and Individual Artist Grant) was made by Susan Browne and seconded by Kālewa Correa. The motion passed unanimously.

#### 5.d. Gift Purchase Recommendations for the Art in Public Places Collection

A motion to approve the Gift and purchase recommendations was made by Ronald Michioka and seconded by Susan Browne. The motion was approved unanimously.

1. SAKAMOTO, Mari. 5697-21 “Night in 2020” paper collage, 2020, 43” x 52” \$6,500.00
2. KNUDSEN, James. 5720-21 “Palolo Valley Swimming Pool” Photography, 2021, 22” x 30” \$1,100.00
3. KNUDSEN, James. 5719-21 “Fabric Store, Kalakaua Avenue” Photography, 2021, 22” x 30” \$1,100.00
4. KNUDSEN, James. 5718-21 “Ala Wai Canal, the Day Before Lockdown” Photography, 2021, 22” x 30” \$1,100.00

TOTAL: \$9,800.00

#### Gift Recommendations:

Artist: Juanita Vitousek

1. VITOUSEK, Juanita, “High Tide Kona” watercolor, 380 mm x 570 mm
2. VITOUSEK, Juanita, “Jetty and Boats” watercolor, 365 mm x 565 mm
3. VITOUSEK, Juanita, “Pandanus Palms” watercolor, 455 mm x 550 mm
4. VITOUSEK, Juanita, “Mountains” watercolor, 455 mm x 550 mm

Donor: Mr. Carrillio Gantner

Artist: Takeo Miji

1. TAKEO, Miji, “No. 7 Brambles” oil painting, 2007, 30” x 30”
2. TAKEO, Miji, “Seascape” oil painting, 2005, 24” x 26”

Donor: Wesley Oh and Reiko Stiver

Artist: Madeleine Soder

1. SODER, Madeleine, “*Ke Ola I Ka Wai*” handmade indigo-dyed and waxed hand-stitched paper, 2018, 70” x 60”

Donor: Madeleine Soder

A motion to approve the purchase recommendations from the APP Hawaii “Covid Call for Art 2020” made by Ronald Michioka and seconded by Susan Browne. The motion was approved unanimously and Gift proposals.

#### 5.e. Schedule Recommendations Art Acquisition Selection Committee

A motion to approve the recommendations of Art Acquisition Selection Committee visits for the month of October-November 2021 was made by Jane Clement and seconded by Ronald Michioka. The motion passed unanimously.

1. Hawai‘i Craftsmen Annual Statewide Exhibition 2021, Downtown Art Center, Honolulu, HI. Mixed media, juried. October 23 - November 19, 2021.
2. Hawaii Nei 2021, Wailoa Center, Hilo, HI. Mixed media, juried. November 5 - December 2, 2021.
3. Brilliance of Now, Kahilu Theatre Foundation, Kamuela, HI. Mixed media, juried. November 9, 2021 – January 10, 2022
4. Hawaii’s Woodshow 2021, Hawaii Opera Plaza, Honolulu, HI. Wood, juried. November 20 – December 5, 2021.

SFCA General Board of Commissioner

Meeting July 21, 2021

Page 4

#### 5.f. Nanakuli Public Library Design Phase

A motion to approve the recommendation of the Nānākuli Public Library design phase of the Commissioned Work of

Art by Scott Fitzel was made by Susan Browne and seconded by Ronald Michioka. The motion was approved unanimously.

5.g. Art Advisory Committee Recommendations, Governor's Portrait

A motion to approve the AAC recommendation of Keith Yamamoto, Mike McCartney, Amy Ige and Allison Wong (SFCA) for the Governor's Portrait of David Ige commissioned work of art project was made by Jane Clement and seconded by Ronald Michioka. The motion passed unanimously.

6. Announcements

Chairperson Lloyd Unebasami called for announcements. There were none.

7. Adjournment

Chairperson Lloyd Unebasami called for motion to close the meeting. The meeting adjourned the meeting at 11:33 a.m.

DRAFT

State Foundation on Culture and the Arts  
American Rescue Plan Recovery Grant FY2021

STAFF REQUEST  
September 15, 2021

**FACTS:**

**Project Title:** American Rescue Plan Recovery Grant

**Project Staff:** Jonathan Johnson, Executive Director, Brittany Rakowitz, Community Arts Coordinator, Sara Beth Newell, Administrative Services,

**Statute/Policy/Procedure:** American Rescue Plan Recovery Grant follows Chapters 3-92 to 3-93 HRS concerning panel and application administration, including Chapter 9-11 for applicant eligibility purposes.

**What:**

The National Endowment for the Arts appropriated funds in the amount of \$759,500 from the Biden Administration's American Rescue Plan funding to the State Foundation on Culture and the Arts to distribute throughout the State of Hawai'i. \$615,000 was allocated to arts and culture organizations and is intended to help the arts sector recover from the COVID-19 pandemic by supporting day-to-day operations and business expenses. The applicant organizations scores and ranking are presented to the SFCA Board of Commissioners for review and approval.

**When:**

Fiscal Year 2021

- Grant period- Group 1: October 1 through November 31, 2021
- Grant Period- Group 2: April 1 through May 31, 2022

**Where:**

America Rescue Plan Recovery Grant is distributed statewide

**Who:**

Eligible non-profit 501(c)3 arts and culture organizations. The grant will support 41 arts and culture organization with the funding available.

**How:**

Staff with SFCA adhered to the National Endowment for the Arts guidance and requirements for the distribution of federal funds, as well as the State of Hawai'i Statutes and Administrative Rules (Chapter 9, Chapter 42). Application's submitted to the grant cycle from 55 organizations were reviewed and scored by grant panels. The grant consists of two grant periods to provide organizations awarded a Biennium Grants FY 2022 grant the opportunity to contract with the American Rescue Plan Recovery Grant Group two. The American Rescue Plan Recovery Grant must be completed by June 30, 2022. A Final Report is due 30 days contract period group one and contract period group 2.

Average Score	Applicant Name	Category
80	Hui Noeau	Arts Education
79.66666667	Hawaii Alliance for Arts Education dba Hawaii Arts Alliance	Arts Education
79.66666667	Garden Island Arts Council	Community Arts
78.66666667	Hawaii Youth Symphony Association	Presenting & Performing
77.33333333	Nova Arts Foundation Inc.	Presenting & Performing
75	Chamber Music Hawaii	Presenting & Performing
75	Diamond Head Theatre	Presenting & Performing
73.66666667	Honolulu Biennial Foundation dba Hawaii Contemporary	Presenting & Performing
73.66666667	Hula Preservation Society	Heritage & Preservation
73.33333333	Ebb & Flow Arts	Presenting & Performing
72.66666667	West Hawaii Dance Theatre	Presenting & Performing
71.66666667	Hawaii Symphony Orchestra	Presenting & Performing
71.33333333	Monkey Waterfall	Presenting & Performing
71	Hawaii Theatre Center	Presenting & Performing
70.66666667	Hawaii Performing Arts Company, Ltd. d.b.a. Manoa Valley Theatre	Presenting & Performing
70.33333333	Society for Kona's Education & Art	Arts Education
70	Maui Dance Council	Arts Education
69.66666667	Wisdom Circles Oceania	Arts Education
69.33333333	Historic Hawaii Foundation	Heritage & Preservation
68.33333333	Friends of the Palace Theater	Presenting & Performing
67.66666667	ProArts Inc	Presenting & Performing
67.33333333	Taiko Arts Center	Presenting & Performing
67	Read To Me International Foundation	Community Arts
66	Tamagusuku Ryu Senju Kai	Presenting & Performing
52.66666667	Oahu Choral Society	Presenting & Performing
47	Honolulu Printmakers	Presenting & Performing
44	Lanai Arts and Culture Center	Community Arts
40	Hawai'i Women in Filmmaking	Presenting & Performing

**\$615,000**



**HAWAI'I**  
STATE FOUNDATION on  
CULTURE and the ARTS

## American Rescue Plan Recovery Grant- Final Score & Ranking

Average Score	Applicant Name	Category
97	East Hawai'i Cultural Council DBA East Hawai'i Cultural Center	Heritage & Preservation
97	Lanai Academy of Performing Arts Inc.	Presenting & Performing
96.66666667	Kāhuli Leo Le'a	Presenting & Performing
95.33333333	Kamuela Philharmonic Orchestra Society	Presenting & Performing
94.33333333	Kona Dance and Performing Arts	Presenting & Performing
94.33333333	Kumu Kahua Theatre	Presenting & Performing
94	Manoa Heritage Center	Heritage & Preservation
93.66666667	Hana Arts	Arts Education
93.66666667	Kahilu Theatre Foundation	Presenting & Performing
93	Moanalua Gardens Foundation, Inc.	Heritage & Preservation
93	Honolulu Theatre for Youth	Presenting & Performing
89.66666667	Maui Academy of Performing Arts	Presenting & Performing
89.33333333	Kona Historical Society	Heritage & Preservation
88.33333333	PA'I Foundation	Heritage & Preservation
88	The Friends of Iolani Palace	Heritage & Preservation
86.5	YOUNG OF HEART WORKSHOP dba Pu'uhonua Society	Presenting & Performing
86.33333333	Aloha Performing Arts Company dba Aloha Theatre	Presenting & Performing
86.33333333	Sounding Joy Music Therapy, Inc.	Community Arts
85.66666667	Hui O Wa'a Kaulua	Heritage & Preservation
85	Alexander & Baldwin Sugar Museum	Heritage & Preservation
85	Alliance for Drama Education	Presenting & Performing
85	Bishop Museum	Heritage & Preservation
84.66666667	Hawaii International Film Festival	Presenting & Performing
84.33333333	Edith K. Kanakaole Foundation	Presenting & Performing
82	Pulama Na Liko	Presenting & Performing
80.66666667	Holualoa Foundation for Arts & Culture d.b.a. Donkey Mill Art Center	Arts Education
80.33333333	Hawaii Youth Opera Chorus	Presenting & Performing

### Organizations Supported per Island

Hawai'i - 10  
Mau'i - 7  
Kaua'i - 1  
Lana'i - 1

Heritage & Preservation (Culture) - 10

Presenting & Performing (the Arts)- 25

Community Arts (Engagement)- 2





**HAWAI'I**

STATE FOUNDATION on  
CULTURE and the ARTS

## State Foundation on Culture and the Arts

### American Rescue Plan (ARP) Recovery Grant Evaluation Rubric

CRITERIA	Low	Moderate	High
<u>Programs/ Projects</u>	0 to 10 points	11 to 19 points	20 to 25 points
Identified programs/projects that have continued by pivoting to online, streaming, or television broadcast. <u>Or</u> developed new programs in response to COVID-19.	Organization did not pivot programs/projects to online, virtual, and/or televised broadcast. Provided little to no justification for not adapting programs/projects to continue reaching their intended audience and community.	Organization pivoted programs/projects to online, virtual, and/or televised broadcast. Provided a brief overview with little explanation of the impact to the organization, the intended audience, and community. Provide little to no supporting materials.	Clear, specific, and thorough explanation of the programs/projects pivoted to online, virtual, and/or televised broadcast. Detailed the impact to the organization, intended audience, and the community. Provided numerous supporting materials.
ENTER POINTS >			

CRITERIA	Low	Moderate	High
<u>Arts Sector Jobs</u>	0 to 5 points	6 to 19 points	20 to 25 points
Identified the need for day-to-day operational support, which includes essential positions that are vital to continued day-to-day business operations and contracted personnel that provide service for specific activities.	Unclear or little to no explanation for the need of funding to support day-to-day business operations, essential staff salaries, and contract personnel.	A brief overview of the need for funding to support day-to-day business operations, essential staff salaries, and contracted personnel. Provided little to no supporting material to affirm the need for funding.	Clear, specific, and thorough explanation of the need for funding to support day-to-day operations, essential staff salaries, and contracted personnel. Provided detailed evidence/materials affirming the need for funding.
ENTER POINTS >			

CRITERIA	Low	Moderate	High
<u>Community Impact</u>	0 to 5 points	6 to 19 points	20 to 25 points
The organization serves populations that are underserved such as those whose opportunities to experience arts and culture are limited by ethnicity, economics, geography, or disability.	The organization does not provide service to underserved populations. Provided little to no clarification for not providing service to underserved populations.	Provided a brief overview that the organization services underserved population. Provided little evidence/materials of the impact of services to underserved populations.	Clear, specific and thorough explanation of the underserved population serviced by the organization. Provided detailed evidence that affirms impact to the underserved population.
ENTER POINTS >			



## State Foundation on Culture and the Arts

### American Rescue Plan (ARP) Recovery Grant Evaluation Rubric

CRITERIA	Low	Moderate	High
<u>Need, Benefit, Impact, Good Use of Federal Funds</u>	0-5 points	6-19 points	20-25 points
<b>The organization has clearly articulated the impact of COVID-19, the need to support day-to-day business operations, and arts sector jobs that are vital to continuing activities</b>	Little to no explanation on the need for funding day-to-day business operations. Little to no explanation on the benefit funding will have on arts sector jobs. Little to no explanation of the impact funding will have on the serviced community.	Provided a brief description on the need for funding day-to-day business operations. Provided a brief description on the benefit funding will have on essential staff salaries and/or contracted personnel. Provided a brief explanation on the impact funding will have on the services community. Provided little evidence/materials to support need, benefit, and impact.	Complete and clear explanation of the need to support day-to-day business operations, essential staff salaries/contracted personnel, and the impact on serviced communities. Provided numerous supporting materials and data to affirm need, benefit, and impact.
<b>ENTER POINTS &gt;</b>			

<u>TOTAL POINTS</u>	LOW	MODERATE	HIGH
	0 to 25 points	29 to 79 points	80 to 100 points
Calculate 'Total Points' by adding the points from the four categories together. Enter the amount in the corresponding column to the right.			



## American Rescue Plan Recovery Grants Grant Review Panelist

<b><u>Panelist</u></b>	<b><u>Category</u></b>	<b><u>Island</u></b>	<b><u>Affiliate Organization</u></b>
Allen, Valerie	HP/CA	Hawaii	Pulama Na Liko
Bunag, Brandon	HP/AE	Oahu	Bishop Museum
Butler, Dr. Lawrence	AE	Hawaii	East Hawaii Cultural Center
Clark, Maja	CA	Hawaii	Donkey Mill Art Center
Coryell, Lana	CA	Maui	Hui No`eau Visual Arts Center
Dray, Deena	PP	Oahu	Diamond Head Theatre
Dunning, Rebecca	PP	Oahu	Honolulu Theatre for Youth
Iwata, Beth	HP	Oahu	Historic Hawaii Foundation
Morihara, Michelle	CA	Oahu	Honolulu Museum of Art
Pili Pang, Michael	HP	Oahu	UH- Music Department/Kuma hula
Reitzer, Larry	PP	Hawaii	East Hawaii Cultural Center
			Palace Theatre
Wong, Randy	PP	Oahu	Honolulu Youth Symphony Association

[BACK TO TOP](#)

State Foundation on Culture and the Arts  
Arts Education

STAFF REQUEST  
September 2021

**REQUEST:** Amend Artists in the Schools (AITS) teaching Artist Assignment for Ka'u High and Pahala Elementary on Hawaii Island.

Originally, Artistic Teaching Partner Kevin Diminyatz applied for an AITS grant with Ka'u High and Pahala Elementary, located on Hawaii Island. Following board approval of the application, Kevin Diminyatz notified SFCA he is unable to participate in the residency for personal reasons.

The project at Ka'u High and Pahala Elementary is an Art in Public Places (APP) AITS Grant of \$8,000 with no school share. The residency focuses on interpreting a work of art from the APP collection through the art form of the teaching artist. The goal is to increase the students' appreciation of, and engagement with our public art collection.

As Ka'u High and Pahala Elementary are located in a rural area with limited arts access, we request approval to substitute the approved teaching artist with another approved teaching artist Lisa Louise Adams. Ms. Adams lives on Hawaii Island, is conducting APP interpretive Visual Arts residencies at other schools and has agreed to work with Ka'u High and Pahala Elementary to engage the students around the permanent work of art on their campus. The school agreed they would welcome a substitute artist rather than have no AITS residency in SY2021-2022.

**RECOMMENDATION:** Amend Artists in the Schools SY2021-2022 teaching Artist Assignment for Ka'u High and Pahala Elementary to Lisa Louise Adams. Authorize SFCA Executive Director to make adjustments as necessary based on contracting to ensure schools are serviced.

**Background Information Provided for Reference:**

**Project Staff:** Danica Rosengren, Arts Program Specialist

**What:** All public and charter school in the state can apply annually to the SFCA for a PreK-12 arts residency grant. Schools are required to use an artist from the SFCA Artistic Teaching Partners Roster. Roster information is updated annually.

**Why:** The SFCA began administering the AITS Program in school year 2007-2008. Prior to that, the program was administered by the Hawaii Department of Education (DOE). Most elementary schools in Hawaii do not have arts specialists even though the arts are considered a core subject, hence most of the applications serve elementary grades. AITS offers residencies in dance, drama, music, literary arts and visual arts with highly qualified teaching artists. Under the SFCA, over 12,000 children and 500 teachers in approximately 100 schools are serviced each year statewide on 6 islands.

**How:** 97 School grant applications were received, reviewed and awarded grants this year.

**Previously approved Project Budget:**

SFCA Federal Funds: \$89,000

SFCA State Funds: \$339,000

Hawaii Community Foundation: \$229,846

TOTAL AITS \$657,846

**BACK TO TOP**

**State Foundation on Culture and the Arts  
Hawai'i State Art Museum**

STAFF REPORT  
September 15, 2021

**REQUEST:** Approval of Hawaii State Art Museum Art Bento Education Program Schools, Artistic Teaching Partners and Museum Guides for the SY 2021-2022

**PROJECT TITLE:** Art Bento, an education program of The Hawaii State Art Museum

**WHAT:** Applications from 15 schools were received (129 classes). Panelists recommended all schools to participate. Teaching Artists from the SFCA teaching artist roster were paired with each of the applicant schools based on schools requested artform.

**HOW:** Schools request a specific artform such as Literary Art, Drama, Dance or Visual Art. Teaching Artists with expertise in the requested area are then paired with schools. Assignments ensure impact in rural, underserved and title one schools. Teaching Artists on the SFCA roster have completed a variety of training and are highly skilled at both an artform and teaching.

**WHEN and WHERE:** All activities to be virtual this Fall with museum visits at the earliest in spring 2022, contingent on Covid restrictions.

**SCHOOLS:** Hahaione, Hokulani, Kaahumanu, Kaala, Kailua, Kalihi, Kalihi Kai, Kamaile Academy PCS, Lincoln, Makaha, Makalapa, Mauka Lani, Mililani Mauka, Voyager PCS, Waianae.

**TEACHING ARTISTS: LITERARY ART:** Laurel Nakanishi, **DRAMA:** Michael Cowell, James McCarthy, **DANCE:** Mimi Wisnosky Chang, Mimi Wisnosky Sr., **VISUAL ART:** Zoe Liu, Steven Kean, Fae Yamaguchi, Hannah Shun, Denise Karabinus, Margo Vitarelli.

**MUSEUM GUIDES:** Mimi Wisnosky Chang, Tara Iden, Vivien Lee, Laurel Nakanishi, Marcia Pasqua, Hannah Shun, Loke Simon, Liz Train, Fae Yamaguchi,

**WHY:** Panelists reviewed and recommended all applications be accepted. All schools that applied will be served. Teaching artists are assigned to ensure even distribution among participating Teaching Artists. Teaching Artists on the SFCA roster have completed a rigorous training regiment and are highly skilled at both an artform and teaching. Museum Guides assist with school visits and guided tours.

**DISCUSSION:** APP/HiSAM Director Karen Ewald conducted individual meetings with every school Principal, teacher and teaching artist. Schools and teaching artists expressed their interest in specific artforms based on past experience and were paired up.

**BUDGET IMPLICATIONS:** \$154,000

**RECOMMENDATION:** Approve roster and assignments of teaching artist to work in 15 schools (129 classes) for servicing through the Art Bento Program at HiSAM for SY2021-2022. Authorize SFCA Executive Director to make adjustments as necessary based on contracting to ensure schools are serviced.

2021-2022 ART BENTO	
SCHOOL	Teaching Artist
Hahaione	Michael Cowell
Hokulani	James MCarthy
	Zoe Liu
Queen Kaahumanu	Fae Yamaguchi
Kaala	James McCarthy
	Denise Karabinus
Kailua	Mimi Wisnosky
	Laurel Nakanishi
Kalihi	Michael Cowell
	Zoe Liu
Kalihi Kai	Mimi Wisnosky
Kamaile Academy	Steven Kean
	James MCarthy
Lincoln	Denise Karabinus
	Zoe Liu
Makaha	James MCarthy
	Denise Karabinus
	Hannah Shun
Makalapa	Mimi Wisnosky
	Zoe Liu
Mauka Lani	Mimi Wisnosky
	Fae Yamaguchi
Mililani Mauka	Steven Kean
	Hannah Shun
Voyager PCS	Steven Kean
	Steven Kean
Waianae	Michael Cowell

[BACK TO TOP](#)

**Art in Public Places Program  
Relocatable Works of Art  
September 15, 2021**

**Purchase Recommendations for the Art in Public Places Collection**

SFCA Art in Public Places – reviewed virtually during Abstract Only 2021 AASC, Wailoa Center, Hilo, HI

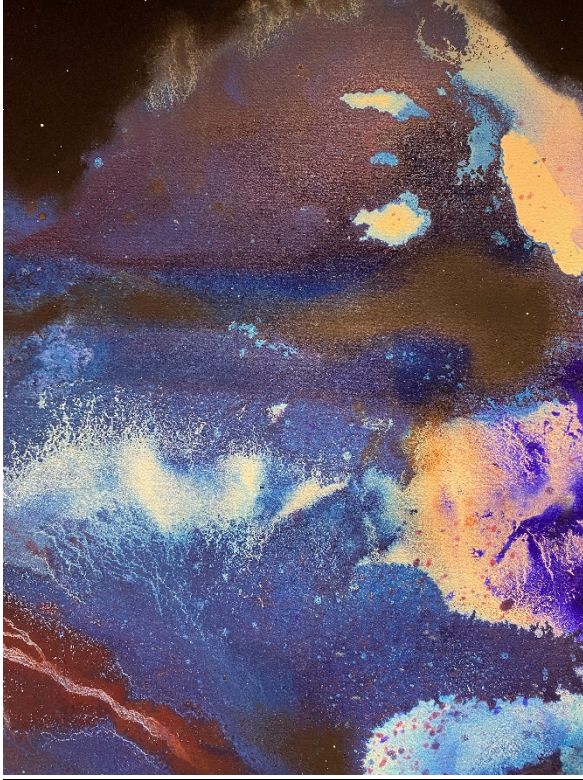
ASC VACS: Sherm Warner, Deborah Nehmad, Margo Ray  
SFCA Staff: Karen Ewald, Jonathan Johnson, Elizabeth Baxter

1. YOSHIHATA, Hana. 5712-21. *Kawainui*  
ocean water, acrylic pigments, sumi ink, gouache, pastel, 2020  
\$8,424.00  
The dimensions of each piece are 118 ½" x 51 ½" (there are three pieces).

Created for the exhibit "Mai ho'ohuli i ka lima i luna" in 2020. Artist Hanna Yoshihata was commissioned by the SFCA to create this work of art for the exhibit and the recommendation is to acquire the work of art into the APP Collection.

Excerpt from the curatorial statement "Aia nō ka pono — o ka ho'ohuli i ka lima i lalo, 'a'ole o ka ho'ohuli i luna" by "Mai ho'ohuli i ka lima i luna" curators Drew Kahu'āina Broderick, Ka'ili Chun, and Kapulani Landgraf.

"... an expansive wall treatment by Hana Yoshihata, a young artist and PVS crew member. Yoshihata's painting, *Kawainui* (2020), has been poured, in honor of Kāne, with a mixture of coastal seawater from Kealakekua and deep sea water from Ka Piko o Wākea (equator) gathered on the homecoming leg of Hōkūle'a's Worldwide Voyage in 2017. As with the ocean and voyaging— pathways of connectivity to peoples and places, spanning centuries, cultures, and solar systems—the installation of work by Kāne and Yoshihata also bridges a generational divide, bringing "old" and "new" together in a shared time and space."



*Kawainui - detail*



*Kawainui - detail*





*Kawainui - detail*



*Kawainui – in display case*

State Foundation on Culture and the Arts  
Art in Public Places  
STAFF REPORT  
September 15, 2021

REQUEST:

Approve recommended schedule for Acquisition Award Selection Committee for November 2021 – January 2022.

FACTS:

Submitted requests:

1. *Remittance: Mellisa Chimera and Maika' Tubbs*, Above the Hilo, HI. Mixed media, curated. November 5, 2021 – January 7, 2022.
2. *Annual Juried Exhibition*, Hui No'eau Visual Arts Center, Makawao, HI. Mixed media, juried. January 14 – February 18, 2022.

RECOMMENDATION:

Staff recommends AASC to be convened for:

1. *Remittance: Mellisa Chimera and Maika' Tubbs*, Above the Hilo, HI. Mixed media, curated. November 5, 2021 – January 7, 2022.

Proposed virtual or in person AASC: November, exact dates TBD

Discussion:

Above the Equator is a new hybrid gallery with a project space located in historic, downtown Hilo, Hawai'i. Dedicated to promoting artists working from the countries and cultures near the equator, with a strong focus on artists of Hawai'i. Above the Equator has an emphasis on exploring themes related to the island experience; climate change and the environment; the legacy of colonization and occupation; tourism; immigration; and a global remittance economy.

REMITTANCE

"We would be honored to host the AASC to our forthcoming show, *Remittance* for an exhibition visit this November or December. This show will feature new works by renowned Hawai'i artists Melissa Chimera (Hawai'i Island) and Maika'i Tubbs (O'ahu/New York). Examining themes related to the concept of "remittance" both literally and spiritually, Chimera and Tubbs' two-

artist show will highlight the global remittance economy and migrant workers in relationship to contemporary Hawai'i while reflecting on history (Chimera), as well as the spiritual connection to remittance to one's home, culture, and identity when living between two islands, Hawai'i and Manhattan (Tubbs)."

Chimera and Tubbs will receive 50% of all sales from their forthcoming exhibition and their bios are as follows:

**Melissa Chimera** (b. 1972) is a conservationist and Honolulu native of Lebanese and Filipino ancestry. She studied natural resources management at the University of Hawai'i, a world epicenter for plant and animal extinction and worked for two decades as a conservation manager. She keeps a studio on Hawai'i Island where she lives with her husband and son. Chimera's work investigates species extinction, globalization and human migration. Her debut project as both artist and curator was *The Far Shore: Navigating Homelands* for the Arab American National Museum (2018, Dearborn, MI). The exhibition commemorates the 100th anniversary of the end of the Great War and the beginning of the upheaval of the Arab World. Chimera's solo shows include *Migrant* (2019) at the Honolulu Museum of Art, *Agents of Change* (Hui No'eau Visual Arts Center, Maui), and *Splendor: Portraits of the Natural World* (ARTS at Marks Garage). Chimera has twice collaborated with her mother poet Adele Ne Jame on poetry and painting exhibitions (including *The Far Shore*). In 2009, Chimera was commissioned with Ne Jame to create *Inheritance: Reclaiming Land and Spirit*, a poetry-painting collaboration for the Sharjah Biennale 9, United Arab Emirates. Other collaborations include *Moving Cultures*, a collaborative art-making train journey across 2,000 miles of China. Chimera has exhibited across the U.S., Asia and the Middle East. She is the recipient of the Catherine E. B. Cox Award and a finalist for the Lange-Taylor Prize. Her work resides in the collections of the Arab American National Museum, the Honolulu Museum of Art, and the Hawai'i State Foundation of Culture and the Arts.

**Maika'i Tubbs** utilizes found detritus to create sculptures and installations around themes of obsolescence, consumption, and ecology. He regards discarded objects as untapped resources and transforms them to reveal a world of hidden, limitless potential. His process-oriented work reflects honest observations of unnatural familiarity influenced by the blurred boundaries between organic and artificial life. Tubbs is from Honolulu, Hawai'i and lives in Brooklyn, New York. He received his BFA in Painting from the University of Hawai'i at Manoa and his MFA in Fine Arts from Parsons The New School for Design. When he is not out collecting and hoarding trash, you can find him in or along the nearest body of water. His work has been shown in Hawai'i, Washington D.C., Canada, Japan and Germany.

To learn more about *Above the Equator*, please visit: [www.ategallery.com](http://www.ategallery.com) or follow us on Instagram at @ategaller

2. *Annual Juried Exhibition*, Hui No'ēau Visual Arts Center, Makawao, HI. Mixed media, juried. January 14 – February 18, 2022.

Proposed virtual or in person AASC: January, exact dates TBD

Discussion:

Exhibition Description: Open to artists throughout Hawai'i and beyond, the Hui No'ēau Annual Juried Exhibition has been presented in the gallery for more than 35 years. Artists working in all media may enter up to three pieces that have not been previously exhibited in another juried exhibition and have been created within the past two years. Distinguished artists, art educators, and curators from throughout the state are invited as jurors, providing artists of all skill levels the opportunity to have their work juried by an outstanding professional in the art community. Additionally, the juror's interaction with the Hui staff and the general public through lectures and critiques is always an invaluable learning experience. The Annual Juried Exhibition is one of the only truly open calls on Maui, allowing artists to submit work demonstrating an expressive, personal and contemporary perspective. Invited Artists: At this time, there are no invited artists to the Hui No'ēau Annual Juried Exhibition. Artist Commission: Sales are split 50/50 between artists and Hui No'ēau Visual Arts Center. Juror: Hui No'ēau Visual Arts Center is currently in the process of solidifying a juror to select works for this exhibition. We will update our application as soon as a juror has been confirmed. Guest jurors include respected curators, educators, and artists from Maui, Hawai'i, and the mainland.

**BUDGET IMPLICATIONS:**

Variable amount per acquisition recommendation. FY2022 Budget per Quarter is approximately \$54,000.

Prepared by:

Elizabeth Baxter, Curator

date: September 15, 2021

Recommend:

c Approval

Disapproval

---

Jonathan Johnson, Executive Director

Date

**BACK TO TOP**

State Foundation on Culture and the Arts  
DANIEL K. AKAKA STATE VETERANS HOME ART ADVISORY COMMITTEE RECOMMENDATION  
STAFF REPORT TO THE BOARD  
SEPTEMBER 15, 2021

REQUEST:

Art Advisory Committee (AAC) member recommendation for the Daniel K. Akaka State Veterans Home commissioned work of art project (CWA).

FACTS:

A work of art shall be especially created (commissioned) for the Daniel K. Akaka State Veterans Home. The SFCA shall appoint an AAC for each state facility selected as a project site. SFCA has the opportunity to appoint stakeholders, community members, and facility users to serve on Art Advisory Committees.

PROJECT TITLE: Daniel K. Akaka State Veterans Home  
Art Advisory Committee Recommendation

PROJECT COORDINATOR: Alexandra Skees, Project Manager, Kamakani Konia, Project Manager

WHY:

The AAC shall be responsible for making recommendations pertinent to the development and design of works of art including the location, medium, and character of the works and the selection of the artists.

WHO:

The AAC will be chaired by the agency representative. Staff and community representatives are to be appointed to serve on the AAC by the SFCA. Composition includes individuals knowledgeable in the arts and representative of the regular users of the facility.

BUDGET IMPLICATIONS:

Daniel K. Akaka State Veterans Home CWA: TBD

DISCUSSION:

Daniel Akaka Veterans' Home Recommendation of individuals to serve on its Art Advisory Committee:

Chairperson: Col. Thomas Driskill, Health Care Coordinator, Daniel K. Akaka State Veterans Home  
Staff: CPT Shaoyu Lee, Chief Engineer, State DOD  
Wade Ishii, Deputy Chief Engineer, State DOD  
Facility Users: Dr. James Epure, Director VA Community Living Center  
Community: Clay Park, Veteran, Director of Veterans Programs, Papa Ola Lokahi  
Ex Officio: Matt Gilbertson, President/Director of Design, MGA Architecture  
Daily Wright, Interior Design Leader, Orcutt-Winslow

SFCA Board Member: TBD  
Visual Arts Consultant: TBD

RECOMMENDATION:

Approve the submitted names and appoint a SFCA commissioner to the Daniel K. Akaka State Veterans' Home Art Advisory Committee.

To: Art in Public Places Program  
State Foundation on Culture and the Arts

From: Ron Han  
Office of Veterans' Services

Subject: Art in Public Places Project  
Art Advisory Committee Recommendations

Check One

☐

I am willing to serve as the chair of the Art Advisory Committee (AAC) if appointed by the State Foundation on Culture and the Arts.

☒

I am declining to serve as the chair of the AAC, but ask that you consider the following person who has been delegated the authority to make binding decisions on my behalf:

\* Thomas Driskill, Health Care Coordinator, Daniel K. Akaka State Veterans Home  
email: tm.driskill@gmail.com  
(Name/Title/Address/Phone)

I recommend the following available persons to serve on the AAC:

Staff (Name/Title/Address/Phone)

1. CPT Shaoyu Lee, Chief Engineer, State DOD; email: shaoyu.l.lee@hawaii.gov
2. Alternate: Wade Ishii, Deputy Chief Engineer, State DOD; email: Wade.t.ishii@hawaii.gov

Facility Users (Name/Title/Address/Phone)

1. Dr. James Epure, Director VA Community Living Center; email: james.epure@va.gov
2. Daily Wright, Orcutt Winslow, Interior Design Leader; email: wright.d@owop.com

Community (Name/Title/Address/Phone)

1. Matt Gilbertson, President/Director of Design, mba Architects; email: mattegahawaii.com
2. \* COL Thomas Driskill, US Army Retired, Former President and CEO of Hawaii Health System Corp, former Director, Rural Health, VA Pacific Island Healthcare System; email: tm.driskill@gmail.com

Ron Han

Signature

16 Aug 21

Date

\* Note: Tommy Driskill wears many hats



# Hawaii State Veterans Home Renderings



[BACK TO TOP](#)