

HAWAII
STATE FOUNDATION
ON CULTURE AND
THE ARTS

ANNUAL REPORT
FY 2014-2015



HAWAI'I
STATE FOUNDATION on
CULTURE and the ARTS
CELEBRATING **50** YEARS

SFCA ANNUAL REPORT FY 2014-2015

2	Executive Director's Message
3	Art in Public Places Program
7	Hawai'i State Art Museum
9	Biennium Grants Program
13	Designated Programs
25	ARTS FIRST Partners Strategic Plan
27	Financial Summary
	Commissioners and Staff

COVER: Two Piece Embroidered by Marie McDonald, kapa-wauke with natural dyes. Photo: XXXXXXX

BACK COVER: The Spirit of Mānoa: In the Light of Day by Rick Mills at the Mānoa Public Library, cast glass and steel. Photo: XXXXXXX

LEFT: Detail of Formidable Hakalau by Paul Kodama, photograph.

EXECUTIVE DIRECTOR'S MESSAGE



Jonathan Johnson

Aloha,

This report reviews the 2014-2015 fiscal year, the 49th year of the Hawai'i State Foundation on Culture and the Arts (SFCA). As we prepare for our 50th anniversary in the coming year, we look both to the future and the past to find inspiration, direction and guidance. During the early days of statehood, Hawaii's leaders

developed a plan to "promote, perpetuate, preserve and encourage culture and the arts of Hawai'i." You will see on the following pages, support for culture and the arts in Hawaii continues in many meaningful ways.

The year began with the the legislative auditor working with our office to survey the SFCA's finances and management practices. After six months of research and investigation, the auditor released the report to the Legislature. We took to heart the audit recommendations and promptly set out making the corrections outlined. Many of the recommendations identified in the audit were addressed, some as simple as ensuring meetings were properly noticed and statements to copyright claims posted on the SFCA website. Others, like addressing our strategic priorities, were launched and the work crossed over into the current fiscal year. The audit proved to be a useful tool, a roadmap to keep us on the right track.

In response to the audit, the the legislature passed Act 180 authorizing the SFCA to add four positions in support of its Art in Public Places program. The act was then signed into law by Governor David Ige. Once hired in 2016, these positions will reinvigorate SFCA programming with initiatives for arts education on the neighbor islands, programming at the Hawai'i State Art Museum, will allow us to more carefully track and collect percent for art fees, and increase the efficiency of public art programs and services in response to a growing demand. The addition of these positions reflects the government's longtime commitment to culture and the arts as integral to the quality of life for Hawaii's residents and visitors alike.

Following the audit, we developed action steps as performance measurements to our strategic plan. This process was facilitated by the Western States Arts Federation (WESTAF), the regional arts organization serving 13 western states, including Hawai'i.

Fiscal year 2014-2015 saw a modest increase in Federal support and a 10 percent budget restriction of the general fund appropriation. This reduction brought the grants budget to its lowest point in our 50 year history at \$500,000. While this created challenges for both arts organizations and the SFCA, we were able to continue to invest in our core programs. Core areas include the Art in Public Places program providing access to the arts statewide; Artists in the Schools placing teaching artists into Hawai'i classrooms and providing professional development for educators; and folk and traditional outreach delivered through our Living Heritage series and the Ka Hana Kapa project.

Organizational adjustments are necessary on a periodic basis to ensure the efficiency of operations and the viability of programs and initiatives. This year we look to the 2016 legislature and the Governor to support reappropriating payroll of positions that are funded by a mix of Federal and Special funds. Adjusting salaries to more accurately reflect staff time spent on matters supported by the respective funds will make more funds available for programming.

Looking ahead, we know that 2015-2016 will be a banner year for the SFCA as we celebrate our 50th anniversary along with the National Endowment of the Arts. The SFCA has planned a year long series of events including a festival celebration and a new exhibition at HiSAM. We are excited about additional staffing that will allow us to increase our impact in communities across the state. The strategic plan action items will be used to guide our path and measure our progress.

Please enjoy this report highlighting our efforts to support culture and the arts in Hawai'i.

Mahalo!

Jonathan Johnson
Executive Director, SFCA

ART IN PUBLIC PLACES PROGRAM

The Hawai'i State Foundation on Culture and the Arts was established by the Hawai'i State Legislature in 1965 as the official arts agency of the State of Hawai'i. The concept of setting aside one percent of construction appropriations to provide a funding base for the acquisition of works of art set a national standard in 1967 when Hawai'i became the first state in the nation to pass such legislation. The 1989 revision of the law created the Works of Art Special Fund, a non-lapsing account into which all funds set aside for works of art are deposited and from which expenditures for purposes consistent with Section 103-8.5, Hawai'i Revised Statutes, are made.

The objectives of the Art in Public Places Program are to enhance the environmental quality of public buildings and spaces throughout the state for the enjoyment and enrichment of the public; to cultivate the public's awareness of visual arts in all media, styles, and techniques; to contribute to the development



Ae'o by Bud Spindt at Mokapu Elementary School, cast glass and steel. Photo: XXXXXXXX

and recognition of a professional artistic community; and to acquire, interpret, preserve, and display works of art expressive of the Hawaiian islands, the multicultural heritages of its people, and the creative interests of its artists.

The Art in Public Places Program acquires completed, portable works of art, and commissions artists to create works of art for specific locations. Works of art are commissioned on the recommendations of Art Advisory Committees which are appointed by the State Foundation Commission to assist with the selection of a location, define the medium and theme of the work of art, recommend an artist, and review design proposals. Typically, the Art Advisory Committee is chaired by a building's chief administrator and includes representatives from the staff, user groups, and community. The Commission also appoints one of its commissioners, staff representatives of appropriate State departments, and technical and artistic consultants as necessary. Management of the project is coordinated by Art in Public Places Program staff.

Commissioned works of art

Artist	Title	Medium	Site	Price
Mills, Rick	<i>The Spirit of Mānoa: In the Light of Day</i>	cast glass and steel	Manoa Public Library	\$150,000.00
Spindt, Bud	<i>Ae'o</i>	stainless steel and glass	Mokapu Elementary School	\$75,000.00
Vasconcellos, Jerry	<i>Makawalu Vortex</i>	basalt pohaku (stone) from Ko'olaupoko and earthwork	University of Hawaii Cancer Center	\$232,561.00
Kauinana, Kazu	<i>Holomua</i>	bronze	Kaua'i Community College	\$190,000
Number of Artworks			4	
			Total	\$647,561

The Art in Public Places—Artists in Residence Program (APP-AIR) is a collaborative program between the Department of Education and the State Foundation on Culture and the Arts. The program was established in 1996 to implement an

integrated visual arts in education program while providing commissioned works of art in public schools. The school APP-AIR project committee is guided by the SFCA through the process of selecting an appropriate site and style of

artwork for their school campus. Artists appropriate to the project are recommended from an open call for artists. The school works collaboratively with the selected artist on the concept of the artwork for their school. The APP-AIR program includes an educational component designed to

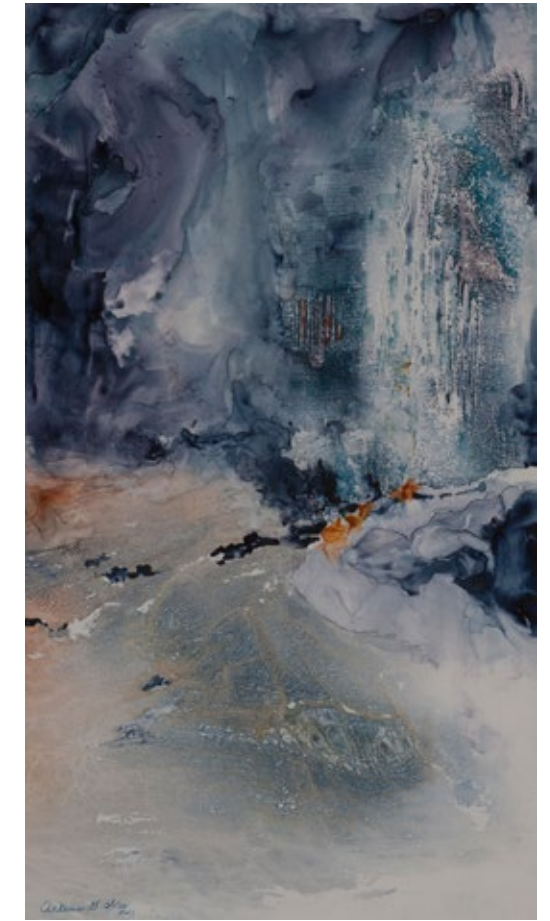
include student and teacher participation in the conceptualization, design, construction, and installation of the commissioned work of art. The final artwork reflects and is appropriate to the school's environment, curriculum, cultural values, and aesthetics.

Relocatable Works of Art Acquisitions

Artist	Title	Medium	Price
Abe, Satoru	<i>80 Men</i>	metal and wood	\$14,659.68
Adams, Keegan	<i>Type 1 Ritual</i>	stone lithography and monotype	\$600.00
Amemiya, Clayton	<i>Jar (12)—Jar with Coral and Opihi Shell Marks</i>	wood-fired (anagama) stoneware, coral markings, multiple firings	\$2,080.00
	<i>Jar with Lug Handles (14)</i>	wood-fired (anagama) stoneware	\$1,560.00
Barnaby, Margaret	<i>Sheltered by the Loulu Palms</i>	multiple plate color woodblock print on Stonehenge paper	\$1,248.00
Bennett, Carol	<i>Flame Angel Surgeon</i>	reverse multi-media glass painting	\$10,416.00
Chiarello, Joey	<i>The Power of Uncertainty</i>	ceramic	\$6,200.00
Clemente, Francisco	<i>Lychee Dream</i>	Lychee wood	\$3,350.78
Davies, Justin	<i>To The Hills</i>	photographic collage	\$900.00
DuBose, David	<i>Red Dog, Blue Dog</i>	hybrid print (digital/lithography)	\$400.00
Dunn, J. Kelly	<i>Magnifique</i>	Koa wood	\$3,560.21
Duquette, Kyle Lynn	<i>Tiki Skyline</i>	photograph	\$677.08
Fishman, Noel	<i>Chicken Little</i>	watercolor	\$392.67
Haar, Tom	<i>Solar Scribblings—1</i>	gelatin silver print	\$1,256.50
	<i>Solar Scribblings—4</i>	gelatin silver print	\$1,256.50
Hamasaki, Mark	<i>Rayogram #11</i>	silver gelatin print	\$1,672.00
Hamby, Robert	<i>Waimea Plantation House</i>	watercolor	\$624.96
Heaton, Amber	<i>Blood Flows Like Time</i>	etching	\$500.00
Hee, Charlton Kupa`a	<i>Maka`aoa</i>	ceramic, aerosol, nail polish	\$471.20
	<i>Palua</i>	ceramic, aerosol	\$1,256.54
Hill, Barclay	<i>Journey II</i>	copper paneling, glass	\$9,895.77
Hill, Frances	<i>Life in a Bowl</i>	watercolor	\$1,151.83
Hiratsuka, Yuji	<i>Permian Utopia</i>	intaglio	\$950.00
Hodges, Snowden	<i>Lychee</i>	oil/linen	\$3,500.00
Hopfe, Henry K.	<i>Ki`i Poho Pohaku</i>	vesicular basalt	\$900.00
Johns, Cliff	<i>"The `Ohana Series"</i>	Hau wood	\$6,701.57
Juan, Elroy	<i>Waipio</i>	decorated Hawaiian water gourd	\$1,200.00
Kauinana, S. Kazu	<i>The Time of Change</i>	kou wood	\$3,000.00
Khewhok, Sanit	<i>Bee</i>	oil on canvas mounted on board	\$2,080.00
	<i>Ornithoptera Meridionalis</i>	oil on canvas mounted on board	\$3,120.00
Klobe, Thomas	<i>Breaking Dawn</i>	Plexiglas, aluminum	\$2,500.00
Kodama, Paul	<i>Formidable Hakalau</i>	photograph	\$523.50
	<i>Soul Guardian II</i>	photograph	\$732.90
Kuraoka, David	<i>Blue Ocean Stump</i>	ceramic	\$6,790.63
	<i>Whorl Stump</i>	ceramic	\$6,806.28
McDonald, Marie	<i>Two Piece Embroidered</i>	kapa—wauke with natural dyes	\$1,979.15
	<i>Untitled (Hillside)</i>	kapa—wauke with natural dyes	\$3,645.81



Mother and Child by Yukio Ozaki, ceramic. Photo: Paul Kodama



Hideaway by Arlene Woo, watercolor. Photo: Paul Kodama

(Continued from page 4)

Artist	Title	Medium	Price
McDonald, Marie	<i>Untitled (Yellow Stripes)</i>	kapa—wauke with natural dyes	\$4,166.64
Miller, Emily	<i>History—Lihue Mill</i>	watercolor	\$1,562.40
Mills, Rick	<i>Amethyst & Topaz Botanical</i>	blown and solid formed glass	\$2,879.58
Miyata, Wayne	<i>Passage</i>	stainless steel and bronze	\$5,937.12
Nielsen, Jupiter	<i>Liliko`i (Passiflora edulis)</i>	flameworked borosilicate glass	\$3,124.98
Ogletree, Daniel	<i>I Am A Hard Worker</i>	lithography, screenprint, gouache	\$600.00
Owen, Jennifer	<i>Hale `Akoakoa 2 (Gathering Place)</i>	salt-fired ceramic	\$2,200.00
	<i>Hale II</i>	salt-fired ceramic	\$890.05
Ozaki, Yukio	<i>Mother & Child</i>	ceramic	\$1,500.00
Pao, Carl Franklin	<i>Ki`i Kupuna: Maka Ka`aila`au</i>	acrylic, graphite, and shellac on canvas	\$12,565.44
Peterson, Julie	<i>Untitled</i>	lithograph	\$390.62
Ra, Jane	<i>Ho`omaluhia</i>	watercolor	\$2,094.24
Rattanangkoon, Jeera	<i>Ka`u Desert</i>	monotype woodprint	\$4,166.68
Samimi, Kamran	<i>EROSION</i>	woodblock relief print	\$400.00
Schattenburg-Raymond, Lisa	<i>Kapa Mamaki</i>	mamaki stamped with kukui soot ink	\$729.16
Sunabe, Russell	<i>Changes: For John Dominis Holt</i>	oil on canvas	\$4,000.00
Tanaka, Clifford	<i>Red White and Blue</i>	acrylic	\$2,604.17

(Continued from page 5)

Artist	Title	Medium	Price
Uyehara, Lori	<i>On Good Ground</i>	mixed media wood	\$1,254.00
Woo, Arlene	<i>Hideaway</i>	watercolor	\$628.27
Yamanoha, Nora	<i>Rift Zone</i>	mixed media monotype	\$3,645.84
Yawata, Maile	<i>Immigrant</i>	clay, casein, and acylic paints	\$1,463.00
Number of Artworks	58	Total	\$165,361.75

GIFTS TO THE ART IN PUBLIC PLACES COLLECTION

Artist	Title	Medium	Value
Davidson, Russell	<i>Chinaman's Hat (Mokolii)</i>	acrylic	\$2,000.00
	<i>Diamond Head (from Kaimana Beach)</i>	acrylic	\$2,000.00
	<i>Journey of the Gods</i>	acrylic	\$4,000.00
Pohl, Louis	<i>The Journey</i>	acrylic	\$3,000.00
	<i>Blue Birds</i>	collagraph	\$2,500.00
	<i>First Flight</i>	collagraph	\$2,500.00
	<i>Sentinels</i>	collagraph	\$2,500.00
Number of Artworks	7	Total	\$18,500.00



Sentinels by Louis Pohl. Photo: Paul Kodama



Ignis enia verferatur? Ehendem verum nonsera inis sam earum non repel etur simet in ne exerfer er inis sam earum non fer. Photo: XXXXXXX



Trinity has fun creating decorations during a Second Saturday event at HiSAM. Photo: State Foundation on Culture and the Arts

Hawai'i State Art Museum

The Hawai'i State Art Museum opened in 2002 and provides public access to curated exhibitions of artworks from the Art in Public Places Collection.

In FY2015, the following exhibitions were on display: *Image & Imagination*, *He Makana: The Gertrude Mary Joan Damon Haig Collection*, *Enriched by Diversity*, *ACCESSION 2014*, the *52nd Annual Regional Scholastic Art Awards Exhibition* and *Voyaging: The Art of Wayfinding*.

During the year 28,115 people visited HiSAM: among these were 455 school groups and 30 community groups touring

the galleries. Monthly programming included First Fridays, featuring performances at the museum during open evening hours (1,513 visitors); Second Saturdays, featuring hands-on family oriented art activities (1,305 participants); and Art Lunch, HiSAM's noontime lecture series (418 audience count).

The museum's outreach education program, the Art Bento Program @ HiSAM, serviced 14 schools (113 classes; 2,512 students, 113 teachers, 160 chaperones) from Oahu's four school districts. The program theme is "Responding to Art" and uses the Hawai'i State Art Museum as a learning laboratory

for students in grades 2 through 6, their teachers and chaperones. Works of art from the Art in Public Places Program on view in the galleries serve as a catalyst for inquiry-based learning in literacy, visual and performing arts. Teaching Artists from the Artists-in-the-Schools roster lead each class through a four-part journey including a pre- and post-visits in the classroom and a day at the museum. Professional development for teachers is also included.

HiSAM facilities were rented on 11 occasions by private parties and 21 times for government rentals. The Hawai'i State Foundation on Culture and the Arts hosted HiSAM's annual Volunteer Appreciation dinner, and the awards ceremony for the 52nd Annual Regional Scholastic Art Awards.



Voyager Public Charter School students at HiSAM. Photo: State Foundation on Culture and the Arts



Lychee Dream by Francisco Clemente, lychee wood. Photo: Paul Kodama

APP FINANCIAL SUMMARY

REVENUES

Works of Art Special Fund Allotment Ceiling.....	\$4,303,527.00
TOTAL.....	\$4,303,527.00

EXPENDITURES & ENCUMBRANCES

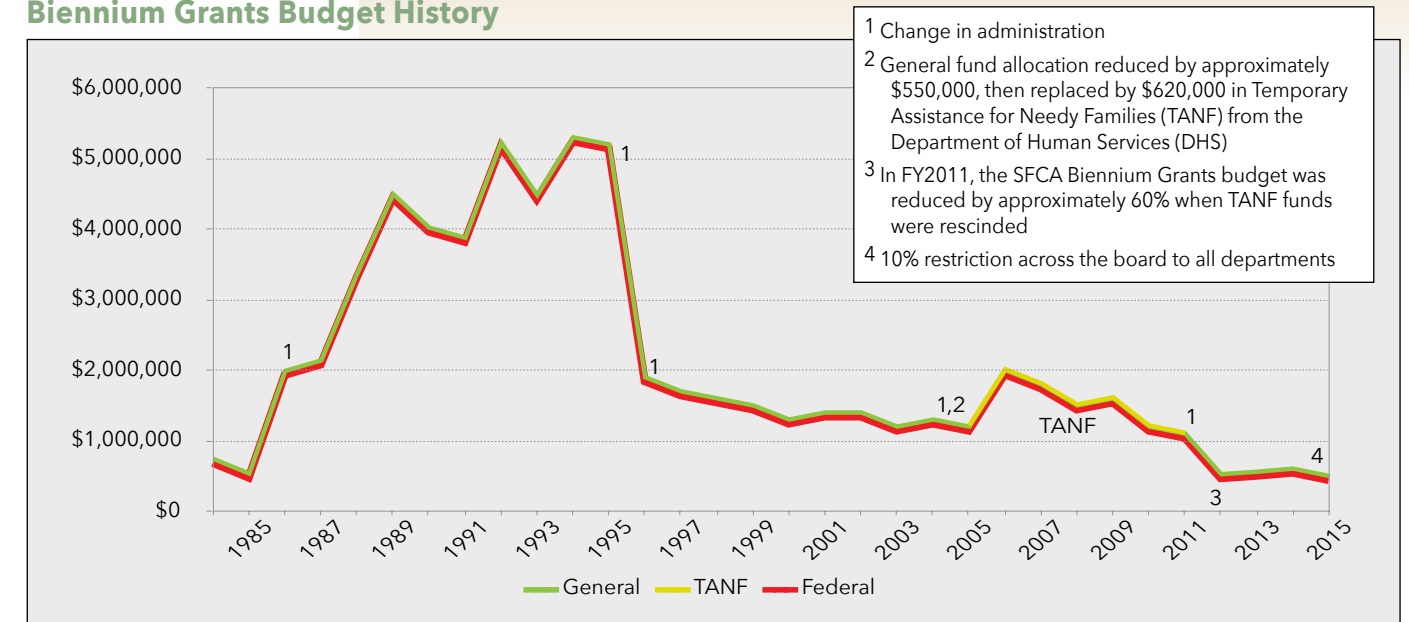
Commissioned Works of Art.....	\$1,528,245.43
Relocatable Works of Art	\$237,147.04
Acquisitions.....	\$165,361.75
Acquisition Award Selection Committees.....	\$14,283.51
Exhibition Services	\$57,501.78
Commissions Conservation Services	\$78,346.21
Registration.....	\$12,220.65
Relocatable Works of Art Conservation Services.....	\$27,354.22
Art in Public Places Administration.....	\$1,535,474.79
Personnel.....	\$1,101,337.99
Operating.....	\$434,136.80
Gallery Operations	\$381,851.04
TOTAL.....	\$3,800,639.38

BIENNIUM GRANTS PROGRAM

When Congress established state arts agencies across the nation, the intent was that they function as conduits for federal funds to reach arts programs at the community level in each state. With the support of the legislature and the administration, the SFCA Biennium Grants Program became the largest source of public support for the arts in Hawai'i and for decades led the nation in per capita arts support.

Over the years, these organizations have learned to rely less on SFCA as a source of funding and more as an affirmation of their role in local culture. In FY 2015, grants were awarded to 66 organizations statewide in the amount of \$500,132.

Biennium Grants Budget History



Arts Education Grants

Organization	Project Title	Amount
Alliance for Drama Education	ADE Basic	\$9,794
Big Island Dance Council	Big Island Dance Education Project - Basic	\$3,031
Center for Hawaiian Music Studies, Inc.	Arts Education for Ka'u	\$9,282
Hana Arts, Inc.	Basic General Operating Support for Hana Arts	\$3,448
Hawaii Theatre Center	HTC Educational Programming 2014-15	\$1,234
Hawaii Youth Opera Chorus	Basic-Hawaii Youth Opera Chorus	\$5,479
Hawaii Youth Symphony Association	Symphony Program: Music Education	\$7,541
Honolulu Theatre for Youth	Statewide Tour	\$17,137
Hui No'eau Visual Arts Center	Children's Art Education Programs	\$3,825
Kahilu Theatre Foundation	Kahilu Theatre Foundation Youth Education Programs	\$8,054
Lahaina Arts Association/LAA	Basic Art Outreach	\$5,275
Lanai Art and Culture Center	Lanai Art Center Kids Art Program	\$13,176
Maui Academy of Performing Arts	School Partnership Programs	\$12,735
Maui Dance Council	Chance to Dance	\$12,422
The Movement Center	Basic Performing Arts Education	\$3,085
	Total	\$115,518

Community Arts Grants

Organization	Project Title	Amount
East Hawaii Cultural Council	Basic Support, Year 2	\$18,823
Garden Island Arts Council	Kaua'i Community Arts Basic Development	\$9,751
Ikebana International Honolulu Chapter 56	Splendors of Ikebana 2015	\$3,045
Kalani Honua Inc.	Empowering Puna Through Art	\$1,791
Honolulu Museum of Art	Art to Go	\$7,527
Na'alehu Theatre	Hawaiian Master Musician Youth Outreach and Cultural Reinvestment	\$8,957
Portuguese Association of Maui	Basic Portuguese Culture	\$3,395
Society for Kona's Education & Arts	The Basic Art of Community Learning	\$14,331
Sounding Joy Music Therapy, Inc.	Music for People with Special Needs	\$2,508
University of Hawai'i, Outreach College	Pacific New Media	\$2,687
Volcano Art Center	HINA & Art VanGo	\$10,838
	Total	\$83,653

Heritage and Preservation Grants

Organization	Project Title	Amount
Friends of Waipahu Cultural Garden Park	BASIC-Sharing the Plantation Heritage	\$17,056
Hawai'i Council for the Humanities	Hawai'i History Day	\$9,405
Hawaii United Okinawa Association	"Warabi Ashibi-Okinawan Cultural Day Camp for Children	\$7,441
Hawaiian Mission Houses Historic Site and Archives	Hawaiian Mission Houses Historic Tours and School Programs	\$11,270
Hawaiian Scottish Association	Basic 34th Annual Hawaiian Scottish Festival & Highland Games	\$4,180
Hula Preservation Society	BASIC— Our Last Living Link	\$13,689
Kauai Historical Society	Kauai Basic History Program	\$13,472
Kona Historical Society	Basic Historic Site Interpretation	\$14,687
Moanalua Gardens Foundation	37th Annual Prince Lot Hula Festival	\$13,271
	Total	\$104,471

Presentation Grants

Organization	Project Title	Amount
Bamboo Ridge Press	Bamboo Ridge Basic	\$4,025
Hawaii Craftsmen	Hawaii Craftsmen Basic Programs	\$5,266
Hawaii Handweavers' Hui	Fashion Designs for Handwoven Fabrics	\$1,364
Honolulu Printmakers	Visiting Artist/Annual Exhibition	\$2,901
University of Hawai'i at Mānoa, Department of Art and Art History Outreach Programs: Intersections and Exhibitions	UHM Art and Art History Community Outreach Program	\$5,395
University of Hawai'i, English Department	Mānoa: A Pacific Journal of International Writing	\$2,067
	Total	\$21,018

Presentation—Performing Arts Grants

Organization	Project Title	Amount
Aloha Performing Arts Company	APAC Basic Season 2014-2015	\$8,659
Chamber Music Hawaii	Basic Statewide Chamber Music	\$12,002
Diamond Head Theatre	Presenting 'Sister Act'	\$5,135

Prince Lot Festival in Moanalua Gardens. Photo: XXXXXXXXXX



(Performing Arts Grants continued from page 10)

Organization	Project Title	Amount
Early Music Hawaii	EMH Concert Series 2014-2015	\$3,732
Ebb and Flow Arts, Inc.	North South East West Festival 2014-2015	\$4,120
Friends of the Ballet/Ballet Hawaii	Ballet Hawaii Full Length Ballets and Presentations 2014-2015	\$15,674
Hawaii Concert Society	Hawai'i Concert Society Season	\$2,613
Hawaii Opera Theatre	Hawaii Opera Theatre - Arts Education FY15	\$11,871
Hawaii Performing Arts Company	2014-2015 Play Production Program	\$9,031
Hawaii Performing Arts Festival Inc.	Hawaii Performing Arts Festival 10th Season	\$5,748
Hawaii Vocal Arts Ensemble	Basic Grant: Annual Concert Season	\$3,881
The Honolulu Chorale	Honolulu Chorale Basic	\$2,609
The Kapolei Chorale	Kapolei Chorale Basic Presentation/Performing Arts Project 2015	\$2,463
The Kauai Chorale	Basic: Kauai Chorale Concert Series	\$2,015
Kona Music Society	Basic Operating Support	\$3,688
Kumu Kahua Theatre	Kumu Kahua 44th Season - Basic	\$9,255
Live Music Awareness	Music Education in the Community, Chamber Music, Windward Oahu	\$1,346
Maui Arts & Cultural Center	MACC Presents	\$14,480
Nova Arts Foundation, Inc.	IONA Contemporary Dance Theatre Basic	\$15,450
Oahu Choral Society	Choral Masterworks on Neighbor Islands	\$4,837
Performing Arts Presenters of Hawaii	Performing Arts Presenters of Hawaii	\$3,881
University of Hawai'i, Leeward CC Theatre	40th Anniversary Part B	\$10,856
University of Hawai'i, Outreach College	University of Hawaii Presents: 2014-2015 Season	\$6,079
University of Hawai'i, Department of Theatre and Dance	2014-2015 Hawaiian Theatre Program Training and Performance of La'ieikawai	\$11,494
West Hawaii Dance Theatre	West Hawaii Dance Theatre Basic Program	\$4,553
	Total	\$175,472
	GRAND TOTAL	\$500,132

Grants Panelists, FB 2013-2015 (Panels were chaired by Commissioners in bold.)

Arts Education	Community Arts	Heritage and Preservation	Presentation (Visual Arts, Literary Arts)	Presentation—Performing Arts (Dance, Theatre, Music, Opera)
Joel Guy Michael Moore	Mary Begier Peter Rosegg	Clifford P. Kapon Mary Begier	Barbara Saromines-Ganne Sheryl Seaman	Leonard Chow Barbara Saromines-Ganne
Melly Wilson, O'ahu	Thomas Noyes, Kaua'i	Toni Han Palermo, O'ahu	Neida Bangerter, Maui	Val Krohn Ching, O'ahu
Louise King Lanzilotti, O'ahu	Donna Blanchard, O'ahu	Hokulani Holt, Maui	Deborah Nehmad, O'ahu	Cary Valentine, Kaua'i
Lisa Adams, Hawai'i	Joy Holland, Hawai'i	Malia Van Heukelum, O'ahu	Marcia Morse, O'ahu	Jason Blake, Kaua'i
Marsha Hee, Hawai'i	Alita Charron, O'ahu	Celeste Ohta, O'ahu	Kate Jacobson, Hawai'i	Jon Magnussen, O'ahu
Paul Wood, Maui	John Parkinson, O'ahu	Damaris A. Kirchofer, O'ahu	Inger Tully, Maui	Renee Beauvais, Maui
Dennis Taniguchi, Hawai'i		Lori Phillips, O'ahu	Beverly Major, O'ahu	
Kazu Kauinana, O'ahu			Erin Palmer, O'ahu	

DESIGNATED PROGRAMS

FOLK AND TRADITIONAL ARTS

Living Heritage Series Cultural Outreach

Native Hawaiian cultural outreach took place around the state, supporting both the art of 'ie'ie weaving and the *Ka Hana Kapa* project.

le'ie Basketry

Lloyd Kumula'au Sing conducted a 2½ day intensive hands-on workshop for 17 hula practitioners on 'ie'ie weaving, titled "*Ulana 'le: the art of 'ie'ie weaving.*" Held in Lihue, Kaua'i on July 10-12, 2014, this outreach was accommodated by the 4th Ka 'Aha Hula 'O Halauaola as part of their Na Ponohula series of workshops. The specialized knowledge that he brought to this venue was well-received and appropriate for with a full array of hula arts learning.

Ka Hana Kapa: Hula-Kapa on Kaua'i

The 4th Ka 'Aha Hula 'O Halauaola in July 2014 also integrated Ka Hana Kapa activities into its program to deepen and broaden hula practitioners' knowledge of kapa and hula.

- "*Traditional Processes of Hawaiian Kapa.*" July 10-12 (Na Ponohula 2 ½ day hands-on intensive workshop). Moana Eisele, kapa maker. 20 workshop participants.
- "*Ka Hana Kana Me Kealoha.*" July 10-12 (Na Ponohula 2 ½ day hands-on intensive workshop). Sabra Kauka, kapa maker. 60 workshop participants.
- "*Hi'ikaikano'eau,*" July 14 & 15. The hula concert, which premiered in January 2014 at the Maui Arts & Cultural Center,



Kumula'au Sing's display of his work. Photo courtesy Lloyd Kumula'au Sing

was performed at the Kaua'i Community College Performing Arts Center by Hilo's Halau O Kekuhi, Nalani Kanaka'ole kumu hula.

- July 14 & 15. Na Ponohula workshop students of Sabra Kauka displayed the kapa that they just made, in the Kaua'i Community College Performing Arts Center lobby. Volunteer Malie Jumawan set up 3 long skirted tables with the student

works and other kapa-related items. Before and after the performance and during intermission, the display attracted a lot of attention with Malie and Sabra answering questions.

Ka Hana Kapa: Statewide public screenings; PBS Hawai'i broadcasts

Titled "Ka Hana Kapa," work on this documentary by the Biographical Research Center was initiated in 2010. This story of kapa covers its history, the kapa making process, and includes selected interviews with kapa makers along with footage of the 2011 Merrie Monarch world premiere of Halau O Kekuhi's one-hour performance in Hilo. Completed in September 2014, the schedule of free public screenings included talk story sessions with the producers (W. Craig Howes, Victoria Nalani Kneubuhl, Joy Chong-Stannard) and one or two kapa makers began in October 2014 and concluded in February 2015, attended by more than 500 people.

- Kahilu Theatre (Waimea, Hawai'i). October 12. Presented in partnership and co-sponsorship with Kahilu Theatre and its Kukula Ola Hawaiian Filmmakers Series. Kapa makers Marie McDonald and Roen Hufford.
- McCoy Studio, Maui Arts & Cultural Center (Kahului, Maui). November 2, 2014. Presented in partnership and co-sponsorship with the Maui Arts & Cultural Center. Kapa makers Denby Freeland-Cole and Lisa Schattenburg-Raymond.
- Atherton Halau, Bernice Pauahi Bishop Museum (Honolulu, O'ahu). October 16, 2014. Presented in partnership and co-sponsorship with Bernice Pauahi Bishop Museum. Kapa maker Moana Eisele.
- Lanikeha Community Center Hall (Ho'olehua, Moloka'i). October 25, 2014. Presented in partnership and co-sponsorship with Ka Honua Momona International. Kapa makers Mililani Hanapi and Dalani Tanahy.
- Imiloa Astronomy Center (Hilo, Hawai'i). November 16, 2014. Presented in partnership and co-sponsorship with University of Hawai'i Hilo/College of Continuing Education and Community Service. Kapa maker Roen Hufford.
- Lana'i Theatre (Lana'i City, Lana'i). February 7, 2015. Presented in partnership and co-sponsorship with Lana'i Culture and Heritage Center. Kapa maker Moan Eisele.
- Aston Aloha Beach Hotel, Ali'i Room (Kapa'a, Kaua'i). February 21. Presented in partnership and co-sponsorship with Kaua'i Historical Society. Kapa maker Sabra Kauka.

The documentary was also broadcast statewide by PBS Hawai'i Presents on February 26, 2015 (with web streaming) and again on April 30.

Korean traditional culture on Maui

On May 25, 2015, with 83 audience members, the free screening and presentation of "Moving Home: The Legacy of Halla Pai Huhm" took place in the McCoy Studio Theatre at the Maui Arts & Cultural Center. The documentary, which had already been viewed in Honolulu and on the Big Island, was co-sponsored by MACC and included in its cultural programming to showcase films and presentations about Hawaii's cultures. The screening was followed by a brief director's talk about the making of the documentary by producer Billie Lee and audience Q & A with Mary Jo Freshley. The program concluded with a dance performance by the Halla Huhm Dance Studio which continues the traditional Korean dances of the late Mrs. Huhm to this day. Three solo dances were performed: an early choreography of Arirang



Kahili by apprentice Kawika Lum. Photo courtesy Kawika Lum

(danced by studio director and teacher Mary Jo Freshley, a fan dance (danced by Mio Sato), and a crane dance (danced by Ellen Cho). Freshley (master teacher) and Sato and Cho (apprentices) are recent Apprenticeship Program grantees perpetuating Mrs. Huhm's work.

Folk & Traditional Arts Apprenticeship Grants

Apprenticeship Grants support intensive advanced training in a cultural art form or practice, taught by Hawaii's most masterful cultural practitioners. One of the objectives is to train the next generation's teachers to carry on the tradition. In 2015, 3 apprenticeship projects were fully funded and

implemented and one was partially funded. Mele Chun (teacher) took over the "Feather Art/Feather Work" project after her mother, Paulette Kahelepuna, passed away. Part of the "Preserving Soshin Kai Koto Tradition" grant was completed before Shizuko Akamine (teacher) passed away and apprentice Darin Miyashiro continued working with the Soshin Kai students in Hilo.

Teaching Artists	Apprentices	Apprenticeship Grant Project Title	Grant Amount
Shizuko Akamine	Darin T. Miyashiro	Preserving the Soshin Kai Koto Tradition	\$3,477
Mele Chun	Michael Kawika Lum	Feather Art/Feather Work	\$5,000
Frances Nakachi Kuba	Mina Tamashiro	Konkoru Certification (for Okinawan Dance)	\$5,000
Lynne Yoshiko Nakasone	Linda Asato	Kyoshi Certification (for Okinawan Dance)	\$5,000
Total			\$18,477

Special Projects List

Project Partners	Project Title	Amount
Hawaii Arts Alliance	Artists in the Schools Program Administrative Support (includes Collaborative Residencies Support, \$10,000)	\$285,944
Honolulu Theatre for Youth	Professional Development for Classroom Teachers Program Support (Workshops)	\$22,000
Hawaii Arts Alliance	Professional Development for Teaching Artists	\$26,000
Maui Arts & Cultural Center	Professional Development for Classroom Teachers Program Support (Maui Summer Institute)	\$10,000
Hawaii Arts Alliance	Professional Development for Classroom Teachers Program Support (Statewide Summer Institute)	\$10,000
Honolulu Theatre for Youth	Poetry Out Loud-Hawaii	\$17,500
Edith K. Kanaka'ole Foundation	Hula & Kapa Kaua'i	\$35,000
National Organization for Traditional Artists Exchange	Folk & Traditional Arts Program Support	\$50,000
UH Outreach College/SCEP	SCEP Presenting & Touring Outreach	\$ 50,000

ARTS EDUCATION

The SFCA Strategic Plan cites arts education as one of five priorities for the agency. The goal of the Arts Education Program is to support access to quality arts experiences for Hawaii's K-12 students. We do this through Artists in the Schools grants to public schools for residencies with teaching artists. These artists have gone through a rigorous screening process by SFCA to ensure they are gifted teachers as well as artists. We also offer professional development for classroom teachers and teaching artists to give them the knowledge, skills and confidence to integrate the arts into the school day. The SFCA reached our goal with assistance from the other ARTS FIRST Partners. By collaborating, we achieve more than we could individually. The many



accomplishments of all the ARTS FIRST Partners are listed on pages 22-25.

Artists in the Schools (AITS) Program

This is the eighth year that SFCA has administered the Artists in the Schools Program, combining funds from the State Legislature, the National Endowment for the Arts, and private sources to provide schools statewide with fine arts residencies. This is the seventh year that the Hawaii Community Foundation has generously supported AITS through matching private funds.

A proud Holualoa Elementary School student and the self-portrait he made during an AITS visual arts residency with Holualoa Foundation for Arts & Culture.

Public schools, including charter schools, may apply annually to the SFCA for grants of up to \$6000 per school for residencies in visual arts, dance, drama, music and literary arts. A residency engages students in eight or more sessions with a teaching artist from the SFCA's Artistic Teaching Partners Roster. The purpose is to spark students' awareness of and interest in the arts and also to develop students' knowledge and skills in the arts. Students create art, share or exhibit their art, and respond to art, thereby honing 21st Century skills: critical thinking, communication, collaboration and creativity. Many of the residencies integrate the fine arts with other core subject areas.

In 2014-2015, \$500,557 was granted to 92 schools, a 35 percent increase in schools from the previous year, reaching over 13,000 students.

In addition, \$10,000 in SFCA AITS funds was used to support the Collaborative Residency Project, which paired eight advanced teaching artists with classroom teachers to co-plan and co-teach an arts integrated residency. Training/coaching was given at the ARTS FIRST Summer Institute. There were fifteen collaborative residencies at schools on

Oahu, Maui and Hawaii Island. This project was spearheaded by Honolulu Theatre for Youth, with support from the Hawaii Arts Alliance, Hawaii Community Foundation, and SFCA.



Students at Lanakila Elementary School created an ahupua'a made of clay in an AITS residency with the Hawaii Potters' Guild. Photo: XXXXX

AITS Grants for Arts Residencies

School	Teaching Artist	Project Title	Grant
Aiea Intermediate School *	Character Expression	Honolulu Theatre for Youth (HTY)	\$5,727
Aliamanu Elementary School *	Agents of Change: Dramatic exploration of social behavior	Honolulu Theatre for Youth (HTY)	\$6,000
Anuenue School	Ku Lama Pio'Ole-"The Enduring Light"	Meleanna Meyer	\$5,409
Connections PCS	Artistic Books for Exploring Language Arts	Lisa Louise Adams	\$5,780
Ewa Elementary School *	Imagined Investigation	Honolulu Theatre for Youth (HTY)	\$5,818
Farrington High School	Youth Speaks Hawaii Classroom Residency	Pacific Tongues	\$6,000
Fern Elementary School	Exploring Art-A Colorful Journey Around The World	Regina Bode	\$6,000
Hahaione Elementary School	Pacific Folktales: Grade 1	The Drama Crew (Michael Cowell)	\$5,355
Haiku Elementary School *	Choreographing Common Core with Social Studies and Science	Maui Dance Council (MDC)	\$6,000
Hakipuu Learning Center PCS	'Ike Mai Ka Mo'olelo-He Kumulipo	Meleanna Meyer	\$5,500

(Continued from page 16)

School	Teaching Artist	Project Title	Grant
Halau Ku Mana PCS	Evidence of Cultural Identity	Honolulu Museum of Art (HMA)	\$4,473
Hale Kula Elementary School *	Creative Comprehension: A Dramatic Approach to Understanding Text	Honolulu Theatre for Youth (HTY)	\$3,545
Hana High & Elementary School *	Choreographing Common Core with Social Studies and Science	Maui Dance Council (MDC)	\$6,000
Hawaii Academy of Arts & Science PCS	More Than Meets the Eye-Bumping it up for Everyone. Creating Storyboard Murals through the Visual and Language Arts	Kathleen Kam	\$5,909
Hawaii School for the Deaf and Blind *	Hawaiiana through Clay	Hawaii Potters' Guild (HPG)	\$5,091
Hilo Intermediate School	Art from the inside out: Self-discovery through visual and language arts	Beth Marcil	\$5,974
Hilo Union Elementary School	Moving with the Core	Vicky Robbins	\$2,599
Hokulani Elementary School	The Truth of the Tale: Using Drama to build from Imagination to Understanding of and Communication about Text	James McCarthy	\$6,000
Holualoa Elementary School	Double Portraits: Celebrating Our Diversity Through Art	Holualoa Foundation for Arts and Culture (HFAC)	\$5,595
Honaunau Elementary School *	Creative Interpretation: Exploring Characters through Reading and Drama	Honolulu Theatre for Youth (HTY)	\$2,727
Hookena Elementary School	Navigating through our visual world with visual arts	Anita Broennimann	\$3,220
Innovations PCS *	Creative Encounters: Exploring Character Education through Drama	Honolulu Theatre for Youth (HTY)	\$6,000
Jefferson Elementary School	Sound Stories	Michael Wall	\$6,000
Kaala Elementary School	Dramatic Understanding for Grades K and 1: Show Me What You Think and Feel!	The Drama Crew (Michael Cowell)	\$6,000
Kaelepulu Elementary School *	Creative Expression	Honolulu Theatre for Youth (HTY)	\$4,682
Kahala Elementary School	Welcome H.O.M.: Deeply Engaging Positive Habits of Mind Through Drama	James McCarthy	\$6,000
Kahului Elementary School *	Choreographing Common Core with Social Studies and Science	Maui Dance Council (MDC)	\$6,000
Kaiulani Elementary School	Native American Culture through Clay	Hawaii Potters' Guild (HPG)	\$5,455
Kalaniana'ole Elementary and Intermediate School	Code of Conduct and Points of View-Narrative Illustrations and Storyboards Meet History and Global Societies	Kathleen Kam	\$5,436
Kalihi Uka Elementary School	Developing Rhythmic Understanding and Movement	Michael Wall	\$6,000
Kamalii Elementary School	Dancing the Diaspora	Lasensua Osborne	\$6,000
Kaneohe Elementary School *	Thinking Historically, Acting Creatively	Honolulu Theatre for Youth (HTY)	\$4,682
Kapiolani Elementary School	Chinese Shadow Puppetry	Bonnie Kim	\$4,600
Kapolei Middle School *	Dramatic Expression: Building Performance-based Skills	Honolulu Theatre for Youth (HTY)	\$6,000

(Continued from page 17)

School	Teaching Artist	Project Title	Grant
Kau High & Pahala Elementary Schools	Life Cycle Sculptural Books	Lisa Louise Adams	\$1,915
Kaunakakai Elementary School *	Choreographing With Common Core: Math Moves	Maui Dance Council (MDC)	\$6,000
Kawaikini PCS	Moving into Mo'olelo—Exploring Hawaiian Stories in the Hawaiian Language Through Creative Dance	Mauli Ola Cook	\$6,000
Ke Kula O Kamakau Lab PCS *	Honoring place, culture and story: Connecting past and present through performance	Honolulu Theatre for Youth (HTY)	\$5,727
Kealakehe Elementary School *	Speaking Creatively, Thinking Critically	Honolulu Theatre for Youth (HTY)	\$6,000
Kekaulike High School *	Through an Actor's Eyes: The Emergence of Character and Story	Maui Academy of Performing Arts (MAPA)	\$6,000
Keoneula Elementary School	D.R.U.M.—Developing Rhythm and Understanding Movement—A Cultural Experience!	Michael Wall	\$6,000
Kiheii Elementary School	Health is Wealth—Moving the Mind and Body	Lasensua Osborne	\$3,500
Kilauea Elementary School *	Discover Hand Drumming To World Beat Music—Integrating Social Studies & Science with Music & Leaping into Literacy—Integrating Language Arts with Creative Dance	Lotus Arts Foundation, Maui Ola Cook	\$6,000
Kilohana Elementary School *	Choreographing With Common Core: Math Moves	Maui Dance Council (MDC)	\$6,000
Kohala Elementary School	From Construction to Bringing Puppets to Life	Bonnie Kim	\$4,300
Koko Head Elementary School	Near and Far Beyond—Exploring the Coastal Communities through the Visual Arts and Language	Kathleen Kam	\$6,000
Konawaena Elementary School	Looking Closely at Culture and Nature through Art	Ellen Crocker	\$5,977
Konawaena High School	Experiencing Pathways to Creativity	Ellen Crocker	\$1,739
Kua O Ka La PCS	Dancing the Diaspora	Lasensua Osborne	\$4,195
Kuhio Elementary School *	Creative Perspectives: Drama as a way of Understanding	Honolulu Theatre for Youth (HTY)	\$5,818
Kula Elementary School	Musical Teamwork	Marguerite Heart	\$6,000
Lanai High & Elementary School *	Choreographing Common Core with Social Studies and Science	Maui Dance Council (MDC)	\$6,000
Lanakila Elementary School *	Cultural Awareness Through Clay	Hawaii Potters' Guild (HPG)	\$6,000
Lanikai Elementary PCS *	The Art of Creative Expression	Honolulu Theatre for Youth (HTY)	\$6,000
Laupahoehoe Community PCS	Chinese Shadow Puppetry	Bonnie Kim	\$6,000
Lihikai Elementary School *	Choreographing Common Core: Simply Social Studies	Maui Dance Council (MDC)	\$5,795
Likelike Elementary School *	Cultural Awareness Through Clay	Hawaii Potters' Guild (HPG)	\$6,000
Lunalilo Elementary School *	Imagined Investigation	Honolulu Theatre for Youth (HTY)	\$6,000
Maemae Elementary School *	Word Stories: Drama in Numbers	Honolulu Theatre for Youth (HTY)	\$6,000

(Continued from page 18)

School	Teaching Artist	Project Title	Grant
Makakilo Elementary School *	Imagined Investigation	Honolulu Theatre for Youth (HTY)	\$5,727
Makawao Elementary School	Musical Teamwork	Marguerite Heart	\$6,000
Malama Honua PCS *	'Ai Pono: An Expression through Art	Honolulu Museum of Art (HMA)	\$4,655
Maui Waena Intermediate School	Visual Journaling	Beth Marcil	\$5,841
Mauka Lani Elementary School *	Creative Perspective: Exploring Characters Through Reading and Drama	Honolulu Theatre for Youth (HTY)	\$5,818
Maunaloa Elementary School	Choreographing Common Core: Simply Science	Maui Dance Council (MDC)	\$4,782
Maunawili Elementary School	Dramatic Science for Grades K and 1	The Drama Crew (Michael Cowell)	\$6,000
Moanalua Elementary School *	Evidence of Cultural Identity	Honolulu Museum of Art (HMA)	\$5,255
Moanalua Middle School	Finding Your Bravery Through the Ensemble	The Drama Crew (Michael Cowell)	\$6,000
Molokai High School	Youth Speaks Hawaii Classroom Residency	Pacific Tongues	\$5,455
Mountain View Elementary School	Hawaii and Its People	Honolulu Museum of Art (HMA)	\$5,818
Naalehu Elementary School	Hawaiian Cultural Symbols in Visual and Language Arts	Lisa Louise Adams	\$5,992
Nahienaena Elementary School	Health is Wealth—Moving the Mind & Body	Lasensua Osborne	\$4,555
Nuuanu Elementary School	Dramatic Learning for Grades K, 2, and 4	The Drama Crew (Michael Cowell)	\$6,000
Paia Elementary School *	Choreographing Common Core: Simply Social Studies	Maui Dance Council (MDC)	\$5,727
Palolo Elementary School	Playful Percussion	Michael Wall	\$6,000
Pomaikai Elementary School *	Building Community and Collaboration for Young People	Maui Dance Council (MDC)	\$6,000
Pukalani Elementary School	Musical Teamwork	Marguerite Heart	\$4,338
Puu Kukui Elementary School *	Choreographing Common Core with Social Studies and Science	Maui Dance Council (MDC)	\$6,000
Red Hill Elementary School	D.R.U.M.—Developing Rhythm and Understanding Movement—A Cultural Experience	Michael Wall	\$6,000
Salt Lake Elementary School *	Story Thinking: Dramatic Explorations of Literature	Honolulu Theatre for Youth (HTY)	\$6,000
Volcano School of Arts & Sciences PCS	Kapa and Beyond—Making Discoveries and Patterns When the Natural World meets the Language of the Visual Arts and Math	Kathleen Kam	\$6,000
Voyager PCS *	Journeys of Discovery	Honolulu Theatre for Youth (HTY)	\$5,955
Waialae Elementary PCS *	Voyages of Discovery	Honolulu Theatre for Youth (HTY)	\$4,818
Waiiau Elementary School *	Agents of Change: Dramatic exploration of social behavior	Honolulu Theatre for Youth (HTY)	\$4,682

(Continued from page 19)

School	Teaching Artist	Project Title	Grant
Waihee Elementary School *	Under Pressure: Using Drama to Rehearse Life Skills	Maui Academy of Performing Arts (MAPA)	\$6,000
Waialeale Elementary School *	Being the Best Me in My Community	Hawaii Opera Theatre (HOT)	\$6,000
Waikiki Elementary School *	Dramatic Journeys of Learning	Honolulu Theatre for Youth (HTY)	\$6,000
Wailuku Elementary School *	Drama Moves: Making Meaning of Text With Body and Voice	Maui Academy of Performing Arts (MAPA)	\$6,000
Waimalu Elementary School *	Dramatic Expression	Honolulu Theatre for Youth (HTY)	\$2,864
Waimanalo Elementary and Intermediate School	Roots—Cultural Identity and Celebration (2nd grade) & The Art of Exploration (5th Grade)	Honolulu Museum of Art (HMA)	\$5,868
Waipahu Elementary School	Creative Communication	Honolulu Theatre for Youth (HTY)	\$5,864
Washington Middle School *	Pacific Rim Cultural Diversity through Clay	Hawaii Potters' Guild (HPG)	\$6,000
		SFCA General Funds	\$199,284
		NEA Federal Funds & General Fund match	\$56,160
		Hawaii Community Foundation Funds*	\$245,113
		TOTAL AWARD	\$500,557
		TOTAL FUNDED SCHOOLS	92

* Schools funded by the Hawaii Community Foundation. HCF funds in support of the Artists in the Schools Program are not administered through the State.

Collaborative Residency Teams

Teaching Artist	Teacher	School	Grade
Lisa Louise Adams	Rhanda (Kuulei) Vickery	Waikoloa Elementary School	2
Lisa Louise Adams	Jenna Nakao	Waikoloa Elementary School	4
Maggie Costigan	Courtney Flower	Pomaikai Elementary School	3
Maggie Costigan	Jaydon Isobe	Pomaikai Elementary School	4
Ellen Crocker	Juan Espinal	Konawaena Elementary School	5
Ellen Crocker	Stephanie Symith	Konawaena Elementary School	4
Beth Marcil	Judy Locke	Puu Kukui Elementary School	3
Beth Marcil	Olivia Ren	Pomaikai Elementary School	3
Marcia Pasqua	Rebecca Hirakami	Kalihi Kai Elementary School	4
Marcia Pasqua	Mie Wallace	Makakilo Elementary School	1
Vicky Robbins	Kathleen Booth	Connections Public Charter School	1
Vicky Robbins	Kate Wines	Connections Public Charter School	5
Mardi Swatek	Lisa Fanning	Pomaikai Elementary School	5
Mardi Swatek	Melekai Jensen	Pomaikai Elementary School	1
Paul Wood	Joan Patton	Lihikai Elementary School	K
		SFCA Artists in the Schools funds to support Collaborative Residencies	\$10,000

STATEWIDE CULTURAL EXTENSION PROGRAM (SCEP) PRESENTING AND TOURING OUTREACH

Serving locations and community venues in rural and other underserved areas continues to be the primary focus of SFCA's partnership with the University of Hawai'i Outreach College's Statewide Cultural Extension Program (SCEP). Statewide programming went to pre-schools, elementary schools, libraries, national parks and senior centers. In FY2015, 54 artists (including 25 groups) conducted presentations on six islands that reached more than 6,345 individuals across the state. SCEP's presenting and touring offers a wide range of Hawai'i's various arts and

cultural traditions including contemporary and traditional performing arts, Hawaiian music, a variety of cultural presentations, masks and storytelling. (<http://www.outreach.hawaii.edu/scep/artist.asp>).



Okinawan Dance at Kapolei Library—Cheryl Nakasone (L), Charlene Gima (C), Sumie Uehara (R)

New to the program was a trio headed by Bobby Ingano. Visiting artists for this year were storyteller Diane Ferlatte and celtic musician/storyteller Patrick Ball. This program is successful in serving Hawai'i's older adults at public libraries and senior centers and families with young children at the public libraries.

DESIGNATED PROGRAMS FINANCIAL SUMMARY

Expenditures

Project Title	Description	Project Partners	Amount	Total
Program Operations				\$18,415
	Temporary Program Assistant	Staffing Solutions of Hawaii	\$14,456	
	Program Operations		\$ 3,959	
Arts Education				\$371,444
	Artists in the Schools Program Administrative Support (includes Collaborative Residencies Support, \$10,000)	Hawaii Arts Alliance	\$285,944	
	Professional Development for Classroom Teachers Program Support (Workshops)	Honolulu Theatre for Youth	\$22,000	
	Professional Development for Teaching Artists	Hawaii Arts Alliance	\$26,000	
	Professional Development for Classroom Teachers Program Support (Maui Summer Institute)	Maui Arts & Cultural Center	\$10,000	
	Professional Development for Classroom Teachers Program Support (Statewide Summer Institute)	Hawaii Arts Alliance	\$10,000	
	Poetry Out Loud-Hawaii	Honolulu Theatre for Youth	\$17,500	
Folk & Traditional Arts				\$85,000
	Hula & Kapa Kapa	Edith K. Kanaka'ole Foundation	\$35,000	
	Folk & Traditional Arts Program Support	National Organization for Traditional Artists Exchange	\$50,000	
Community Outreach				\$50,000
	SCEP Presenting & Touring Outreach	UH Outreach College/SCEP	\$50,000	
Total				\$474,859

ARTS FIRST PARTNERS STRATEGIC PLAN FY2013-2018

FY2014 Report (for the period July 1, 2014 through June 30, 2015)

The Hawai'i State Legislature enacted ACT 80 in 1999 which called for Hawai'i's major stakeholders in arts education to revise the State's Fine Arts standards and develop a state-wide Strategic Plan for Arts Education. In 2001, ACT 306/01 passed into law formally naming the ARTS FIRST Partners and mandating the implementation of the Strategic Plan.

The Partners

ARTS FIRST is a network of organizations whose mission is "to work collaboratively to create the conditions and culture that promise a comprehensive high-quality arts education - learning in, about, and through the arts - for every student in Hawai'i."

ARTS FIRST Partners (AFP) include: Hawai'i Department of Education (DOE); Hawai'i Association of Independent Schools (HAIS); College of Arts and Humanities—University of Hawai'i Mānoa (CAH); College of Education—University of Hawai'i Mānoa (COE); Hawai'i State Foundation on Culture and the Arts (SFCA); and Hawai'i Arts Alliance (Alliance). Affiliate partners are the Honolulu Theatre for Youth (HTY) and the Maui Arts & Cultural Center (MACC). Representatives from the ARTS FIRST institutions meet quarterly to discuss and plan activities in alignment with the strategic plan. The SFCA is responsible for convening meetings and annual reporting.



Teaching artists on the Artists in the Schools Roster gather regularly to share and learn from each other. Their art forms include dance, drama, music, visual arts and literary arts. Photo: Kasey Lindley, Honolulu Theatre for Youth

The Strategic Plan

In July 2012 the AFP released its third multi-year strategic plan: ARTS FIRST FY2013-2018 Strategic Action Plan. The plan is built upon four objectives: Advocacy, Research, Teacher Development, and Standards for Student Learning. ARTS FIRST Partners implement the ARTS FIRST Strategic Plan Action Steps within their own institutions and in collaboration with one another for statewide impact. The Partners continue to address, with great success, the four objectives outlined in the Strategic Plan.

The ARTS FIRST Strategic Plan can be downloaded from the HFSCA website under "Education" at:

http://sfca.hawaii.gov/wp-content/uploads/2013/08/ARTS_FIRST_Strategic_Plan_FY13-18.pdf

From FY2002 through FY2015, more than \$25 million was spent in direct services for arts education in Hawai'i at an average of more than \$1.8 million each year - over \$10 invested per student per year. Partners leverage their funds by seeking grants and donations from government agencies, private foundations, businesses and individuals. In FY15, state and county funds accounted for about 42 percent of the total, which was more than matched by federal and private funds.



Classroom teachers at the 2015 ARTS FIRST Summer Institute on Oahu learn about arts integration through active participation. Photo: Vivien Lee

2013-2014 ARTS FIRST PROGRAMS & PROJECTS

KEY to acronyms	Alliance = Hawai'i Arts Alliance	HCF = Hawaii Community Foundation
	COE = University of Hawai'i at Mānoa College of Education	HMA = Honolulu Museum of Art
	CAH = University of Hawai'i at Mānoa College of Arts and Humanities	SFCA = Hawai'i State Foundation on Culture and the Arts
	DOE = Hawai'i Department of Education	HTY = Honolulu Theatre for Youth
	HAIS = Hawaii Association of Independent Schools	MACC = Maui Arts & Cultural Center
		PDC = Hanalei Professional Development Center

ARTS FIRST FY 2013-2018 Strategic Action Plan Goals

Partners that Implemented &/or Funded*

ARTS FIRST FY 2013-2018 Strategic Action Plan Goals	Partners that Implemented &/or Funded*
Goal 1. ARTS FIRST advocacy strengthens public support, awareness, and funding of arts education.	
2015 Annual Teacher Awards Dinner - Maui. 46 teachers received awards for completing between 32-650 hours of professional development in arts education. 114 people attended.	MACC, DOE/Maui
2014 Alfred Preis Honor awarded to Henry Akina for his lifetime commitment to and support of arts and education in Hawai'i.	Alliance
2015 DOE Performing Arts Learning Centers Challenge Awards. \$95,000 awarded to nine high school PALCs. \$55,028 matching funds raised by the PALCs.	Alliance, DOE
Digital narratives of the FY15 Collaborative Residencies created by participating teaching artists.	HTY, Alliance, SFCA
School Residency Program Tracts (brochure style documentations that include descriptions, pictures and standards connections) - produced for schools and parents.	HTY
COE faculty worked with 20 teacher candidates in the B.Ed. Statewide Teacher Education Program in Elementary Education to present arts advocacy talks to faculty in partnership schools on the islands of Kauai, Oahu, Maui and Hawaii.	COE
2015 Annual Hawaii Regional Scholastic Art Awards Exhibit at HiSAM for grades 7-12. 904 students participated.	SFCA, DOE
2015 Hawaii Convention Center Student Art Exhibit for elementary school students. 422 students participated.	SFCA, DOE
2015 Poetry Out Loud statewide high school poetry recitation competition. 14 schools participated. HTY performances attended by 90,000 students statewide.	HTY, SFCA HTY
MACC performances attended by 3,665 students on Maui and in Hana.	MACC, DOE/Maui
Maui-Baldwin-Kekaulike Complex Principals Meeting June 5 focused on arts integration. 55 administrators and six teachers and presenters.	MACC, DOE/Maui
Hawaii Schools Digital Media Grants (\$500-\$2,500) to 31 public and private schools for digital media video programs. \$52,000 total awarded.	HAIS, DOE
UH-Mānoa Kennedy Theatre 'Page to Stage' school outreach program: performances, workshops, educational materials. 2,000 students.	CAH-Theatre & Dance Dept.
CAH Theatre for Young Audience productions of "The BFG" and "Taming of the Shrew" and the Hawaiian Theatre production of "La'ieikawai" at Kennedy Theatre reached thousands of DOE students. Provided educational materials for teachers, outreach activities at school sites, and pre- and post-show educational activities for students while at Kennedy Theatre.	CAH-Theatre & Dance Dept.
CAH Theatre for Young Audience production of "Eddie Wen Go" at the Hawaii Theatre. Provided educational materials and outreach activities. 8,000 students.	CAH-Theatre & Dance Dept.
CAH Theatre & Dance Dept. annual International Thespian Society Festival: workshops, scene presentations, monologue competitions and community celebration. 160 high school students.	CAH-Theatre & Dance Dept.
Goal 2. ARTS FIRST partners conduct and disseminate research on the scope, impact and pertinent topics of arts education in Hawaii.	
COE faculty presented at American Alliance for Theatre Education (AATE) in Milwaukee, WI. "Universal Design for Learning: Access through Drama."	COE
COE faculty presented at the Association for Teacher Educators in Phoenix, AZ. "A Framework for STEAM Integration."	COE

ARTS FIRST FY 2013-2018 Strategic Action Plan Goals

Partners that Implemented &/or Funded*

COE faculty published: Simpson Steele, J. (2014). The vagabond's dilemma; Representing host culture as a teaching artist. In Kelin, D. and Dawson K., Eds. The reflective teaching artist: Collected wisdom from the drama/theatre field. Chicago: University of Chicago Press.	COE
COE faculty published: Frambough-Kritzer, C. Buelow, S. & Simpson Steele, J. (2015). What are disciplinary literacies in dance and drama in the elementary grades? Journal of Language & Literacy Education. 11(1), 65-87.	COE
COE faculty published: Simpson Steele, J. (2015). Becoming creative practitioners: Elementary teachers tackle artful approaches to writing instruction. Teaching Education. Published online May 15, 2015.	COE
Pre-Service & In-Service Teacher Education and Degree Programs	
UH Mānoa Music Dept. offered undergraduate and graduate courses in music education. 20 Music majors taught eight weeks at Anuenue Elementary and Palolo Elementary schools.	CAH-Music Dept.
UH Mānoa Music Dept. offered three Music Education workshops to the community: Core Music Standards, Orff Level I, and Measuring Student Learning Outcomes in Music.	CAH-Music Dept.
UH Mānoa Theatre & Dance Dept. offered undergraduate and graduate courses in drama and dance education. UH students delivered drama & dance instruction to 350 K-12 students in 10 schools, and at libraries and other community venues.	CAH-Theatre & Dance Dept.
COE offered coursework and programs in B.Ed. Elementary and Early Childhood Education (6 credits in Visual Arts and Performing Arts required), Secondary Teaching Certificate in Art Education, M.Ed. in Teaching, M.Ed. in Curriculum Studies in Art Education, and Doctoral Degree Programs.	COE
Professional Development for Educators	
ARTS FIRST Summer Institute 2015 for classroom teachers statewide: "Malama Ka Aina: Investigating Cause and Effect Through Arts & Science" - 41 teachers, three teaching artists, and two interns attended the 4-day institute.	Alliance, DOE, COE, SFCA
MACC Summer Institutes (2) for Educators: "Engaging Students through Creative Strategies: Drama and Music integrated in the Core Curriculum." 32 secondary teachers and 60 elementary teachers attended.	MACC, DOE-Maui, SFCA
2015 Teaching Artist Institute "T.A. Boot Camp and Teaching Artists as Agents of Change," a three-day professional development institute attended by 60 teaching artists statewide. Marc Bamuthi Joseph was the guest presenter. In partnership with PDC.	Alliance, HTY, SFCA, MACC, COE
Professional Development for teaching artists on Maui. Three workshops for 20 TA's. In partnership with the Kennedy Center.	MACC
2014 Schools of the Future Conference. Two-day conference for public and private school teachers focusing on learning and technology. 1,290 educators attended.	HAIS, DOE
Professional Development for Classroom Teachers on Oahu - two courses: "Balancing Your Act: Integrating Common Core with Visual Art," 23 teachers and 223 students, and "Creative Engagement, Critical Literacy: Activating Informational/Complex Text through Drama," 25 teachers & 472 students. In partnership with PDC.	HTY, SFCA, DOE
Professional Development for Classroom Teachers on Maui—two courses: "Building the Foundation through the Arts: Early Childhood Education, Year II" (Five workshops for 42 different teachers) and "Integrating the Arts for Higher Order Thinking Skills" (Five workshops for 40 teachers).	MACC, DOE-Maui
Professional Development for Classroom Teachers on Hawaii Island: "More than Words: A Dramatic Approach to Reading and the Common Core," PK-6, 17 teachers, 109 students.	HTY, SFCA, DOE
Professional Development for Classroom Teachers on Kauai: "Art and the Common Core: Engaging Students through Creative Strategies," PK-6, 21 teachers.	HTY, SFCA
Demonstration lessons in classrooms and coaching of teachers at 4 different Maui schools by four teaching artists; 136 teachers participated.	MACC, DOE-Maui
STEAM Pilot project at Pomaika'i School for all 60 teachers and support staff. Two full days with two presenters from UH COE faculty.	MACC, DOE-Maui, COE

ARTS FIRST FY 2013-2018 Strategic Action Plan Goals

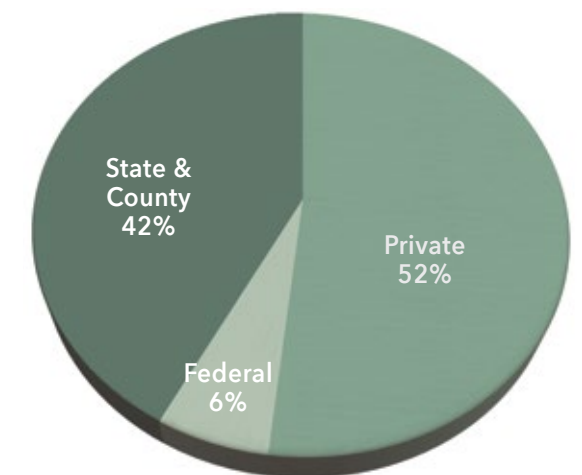
Partners that Implemented &/or Funded*

Hawaii Music Education In-Service Conference in partnership with Hawaii Music Educators Association.	CAH-Music Dept.
Goal 4: All Hawai'i students have access to high quality formal and informal sequential arts education, which is inclusive of fine arts disciplines and enables proficiency in an art form.	
Artists in the Schools Program—\$500,557 for 92 schools statewide for arts residencies. 13,083 students. Matching funds from HCF.	SFCA, Alliance
Collaborative Residencies Project: 15 Arts-integrated residencies co-taught by classroom teacher and teaching artist teams. eight artists, 15 teachers, 375 students statewide.	HTY, Alliance, SFCA
Art Bento Program @ HiSAM - a four-part museum education program for Oahu schools, 113 classes, grades 2-6; 2,512 students.	SFCA, Alliance
SFCA Art in Public Places Artist in Residence Program. Three schools started the Commissioned Work of Art process, joining 5 others that were continuing; 987 students received an educational component with the artist.	SFCA, DOE
CanDo! Days (art immersion field trip) and ArtWorks @ MACC Schaefer Int'l Gallery (guided educational tour and studio experience) - 7,200 students.	MACC
VSA Hawaii apprenticeship program at the Honolulu Museum of Art School, inclusive adult fiber artists with disabilities work and show in partnership with the Hawaii weavers' guild. VSA Hawaii, previously funded by the Kennedy Center, is affiliated with the University of Hawaii Center on Disabilities Studies in the College of Education.	COE/Center on Disability Studies
Primary Players, HTY Saturday drama program, Fall/Spring, 45 students.	HTY
HTY Summer Drama Adventure/Tween Scene: Summer Drama Programs, 38 students.	HTY
On-Stage Workshops, HTY show-related workshops, 253 students.	HTY
Teen Rally, one-day theater and health workshop with HTY, 200 students.	HTY
Maui Collaboration Residencies at two Maui schools with 165 students, 3 teachers and two teaching artists.	MACC, DOE-Maui
"Moving through Math" sequential lessons for 250 students at two Maui elementary schools.	MACC, DOE-Maui
Drama integration, sequential lessons presented by two teaching artists at 2 different schools for 375 students.	MACC, DOE-Maui

* Each Partner seeks funding from private sources as well as from city, state and federal government sources. The private sources are too numerous to name, but primary among them is the Hawaii Community Foundation.

ARTS FIRST PARTNERS REVENUES FY 2014

Funds	Amount	Percent
State & County	\$833,391	42%
Federal	\$116,087	6%
Private	\$1,020,156	52%
TOTAL FUNDS	\$1,969,634	100%



FINANCIAL SUMMARY

Department of Accounting and General Services, State of Hawai'i
 Fiscal Year Ending June 30, 2015

REVENUES

STATE

Executive Allotment.....	\$1,691,332.00
Foundation Grants.....	\$444,257.00
Grants-in-Aid.....	\$755,000.00
Operations	\$492,075.00
Works of Art Special Fund Allotment Ceiling.....	\$4,303,527.00
Works of Art Capital Improvement Project Fund	\$33,566.28
Subtotal.....	\$6,028,425.28

FEDERAL

National Endowment for the Arts	\$1,333,991.00
Subtotal.....	\$1,333,991.00

PRIVATE CONTRIBUTIONS

Carryover from previous year.....	\$260,795.46
Hawai'i State Art Museum Facility Rental	\$23,837.50
Gifts in Memory of Individuals	\$1,100.00
Investment Pool Earnings/pCard Rebate	\$1,162.94
Subtotal.....	\$286,895.90

TOTAL REVENUES.....	\$7,649,312.18
----------------------------	-----------------------

EXPENSES

SFCA ADMINISTRATION	\$538,332.30
Personnel	\$429,287.26
Operating	\$109,045.04
GRANTS PROGRAM	\$1,650,027.00
State.....	\$783,121.00
State Legislative Grants-In-Aid.....	\$679,500.00
Federal—National Endowment for the Arts.....	\$187,406.00
Basic State Plan.....	\$40,106.00
Arts Education.....	\$34,000.00
Arts in Underserved Communities.....	\$70,800.00
Poetry Out Loud.....	\$17,500.00
Folk Arts Partnership	\$25,000.00
ART IN PUBLIC PLACES PROGRAM (See 8)	\$3,800,639.38
DESIGNATED PROGRAMS	\$3,672.20
Operating	\$3,672.20
PRIVATE CONTRIBUTIONS	\$18,185.00
Hawai'i State Art Museum Facility Maintenance	\$15,635.90
Strategic Planning.....	\$344.46
Tadashi Sato & Keiko Sato Scholarship Award.....	\$1,000.00
Hon-Chew Hee Scholarship Award	\$1,000.
Second Saturday Program Events.....	\$204.64
TOTAL EXPENSES	\$6,010,855.88

EXCESS OF REVENUE OVER EXPENSES

STATE

General Fund Lapsed (includes 10% restriction).....	\$97,011.01
Grants-in-Aid Lapsed (includes 10% restriction)	\$75,500.00
Works of Art Special Fund Reversion	\$502,887.62
Works of Art Capital Improvement Project Fund	\$33,566.28
(carryover from previous year, fund established prior to Works of Art Special Fund)	

FEDERAL

National Endowment for the Arts Reversion (ceiling difference).....	\$660,780.49
---	--------------

PRIVATE CONTRIBUTIONS	\$268,710.90
------------------------------------	---------------------

Carryover from previous year	\$258,246.36
Hawai'i State Art Museum Facility Rental.....	\$8,201.60
Donation from anonymous donor.....	\$1,100.00
Investment Pool Earnings/pCard Rebate	\$1,162.94

TOTAL REVENUES OVER EXPENSES	\$1,638,456.30
---	-----------------------



Department of Accounting and General Services
 STATE FOUNDATION ON CULTURE AND THE ARTS (SFCA)
 250 South Hotel Street • Second Floor • Honolulu, Hawaii 96813
 Website: <http://sfca.hawaii.gov>
 Email: HawaiiSFCA@hawaii.gov • Phone: (808)586-0300

COMMISSION AND STAFF July 1, 2014-June 30, 2015

Commission

Barbara Saromines-Ganne, *Chairperson, O'ahu Commissioner*
 Rae Saint Chu, *O'ahu Commissioner*
 Jane Clement, *Hawai'i Commissioner*
 Joel Guy, *Kaua'i Commissioner*
 Michael Moore, *Maui Commissioner*
 Dean Sakamoto, *O'ahu Commissioner*
 Karen Tiller Pollivka, *O'ahu Commissioner*
 Sherman Warner, *Hawai'i Commissioner*
 Eva Rose Washburn-Repollo, *O'ahu Commissioner*

Department of Accounting and General Services

Douglas Murdock, *Comptroller*
 Audrey Hidano, *Deputy Comptroller*

Staff

EXECUTIVE DIRECTOR
 Jonathan Johnson
 Henny Saraswati, *Secretary*

SUPPORT SERVICES
 Ashley Bastatas, *Program Associate*
 Mamiko Carroll, *Office Assistant*
 Estelle Enoki, *Administrative Services Assistant*
 James Gonser, *Information Specialist*
 Mary-Joy F. Llaguno, *Program Associate*
 Susan Naanos, *Accountant*
 Kam Wen Siu, *Account Clerk*

DESIGNATED PROGRAMS
 Vivien Lee, *Arts Program Specialist*
 Charles Medeiros, *Arts Program Specialist*
 Denise Miyahana, *Arts Program Specialist*
 Deirdre Ricci, *Arts Program Specialist*

ART IN PUBLIC PLACES
 Karen Ewald, *APP Manager*
 Wanda Anae-Onishi, *Collections Manager*
 Eli Baxter, *Exhibit Specialist*
 Derek Erwin, *Exhibit Specialist*
 Gideon Gerlt, *Conservation Coordinator*
 Susan M. Hogan, *Museum Educator*
 Ozzie Kotani, *Registrar*
 James Kuroda, *Senior Exhibit Specialist*
 N. Trisha Lagaso Goldberg, *Project Manager*
 Richard Louie, *Exhibit Specialist*
 Kelly Thune, *RWA Curator*
 Scott M. Young, *Visitor Services Manager*

FY 2014-2015 ANNUAL REPORT
 James Gonser, *editor*
 Kathleen Sato, *designer*
 Obun Hawaii Inc, *printer*



Front Row, left: Charles Medeiros, Susan Naanos, Scott Young, Jonathan Johnson, Richie Louie, Eli Baxter, Henny Saraswati and James Gonser
 Second Row, left: N. Trisha Lagaso Goldberg, Mary-Joy F. Llaguno, Kam Wen Siu, Mamiko Carroll, Karen Ewald, Denise Miyahana, Susan M. Hogan, James Kuroda, Wanda Anae-Onishi, and Vivien Lee



HAWAII

STATE FOUNDATION on
CULTURE and the ARTS

CELEBRATING **50** YEARS

No. 1 Capitol District Building • 250 South Hotel Street, Second Floor • Honolulu, Hawaii'i 96813
Ph (808)586-0300 • Fx 808/586-0308 • HawaiiSFCA@hawaii.gov • <http://sfca.hawaii.gov/>