

STATE FOUNDATION ON CULTURE AND THE ARTS
General Board of Commissioners Meeting*
250 South Hotel Street, Honolulu, Hawai'i 96813
Physical Meeting Location: Multipurpose Resource Room, First Floor
Remote Meeting Location: Video Conference or Telephone
Wednesday, September 20, 2023 at 12:00 p.m.

* Pursuant to Act 220, Session Laws of Hawaii 2021 relating to Sunshine Law Boards and new requirements, the Commission will be meeting remotely using interactive conference technology and will provide a physical location for the public to participate in and view the meeting. The public may also access the meeting through the following video conferencing link:

Join Zoom Meeting

<https://us06web.zoom.us/j/85120263839?pwd=RkQ1VFZwTzR0OEExYZE5lY2hTaVphQT09>

Meeting ID: 851 2026 3839

Passcode: 835800

AGENDA

- 1. Call to Order**
- 2. Approval of the Agenda**
- 3. Statements from the Public**
- 4. Approval of Minutes of Previous Meeting held on July 19, 2023**
- 5. SFCA Response to Maui Disaster**
- 6. Executive Session (closed to the public):**
Personnel, (To consider the hire, evaluation, dismissal, or discipline of an officer or employee, where consideration of matters affecting privacy will be involved, pursuant to Section 92-5(a)(2), Hawai'i Revised Statutes). Discussion of personnel action relating to the Executive Director.
- 7. Announcements**
- 8. New/Continuing Business for Discussion and/or Action:**
 - a. FY24 Budget**
 - b. Gift/Purchase Recommendations for the Art in Public Places Collection**
 - c. Schedule Recommendations for Art Acquisition Selection Committees**
 - d. Non-State Loan Requests**
 - e. Women's Community Correctional Center: Hookipa Cottage Contract Amendment**
 - f. Daniel K. Inouye International Airport Mauka Terminal Contract Amendments**
- 9. Adjournment**

Individuals may submit written statements on posted agenda items in advance of the meeting via email to katelyn.m.sweeney.ching@hawaii.gov or by mail addressed to the State Foundation on Culture and the Arts c/o Katie Ching, Administrative Services Assistant, 250 South Hotel Street, 2nd Floor, Honolulu, HI 96813. Individuals interested in signing up to provide oral testimony on posted agenda items at the meeting may submit their name, email, and phone number to katelyn.m.sweeney.ching@hawaii.gov. Statements presented during the meeting will be limited to three minutes each.

If you require special assistance or auxiliary aids and/or services to participate in the subject public meeting, please contact the State Foundation on Culture and the Arts at katelyn.m.sweeney.ching@hawaii.gov or 808-586-0300 at least 48 hours prior to the meeting so arrangements can be made. For further information, please call the State Foundation on Culture and the Arts at 808-586-0300.

**STATE FOUNDATION ON CULTURE AND THE ARTS
General Board of Commissioners Meeting*
250 South Hotel Street, Honolulu, Hawai'i 96813
Multipurpose Room, First Floor**

Wednesday, July 19, 2023 at 11:00 a.m.

MINUTES

Members Present

Susana Browne, At-Large; Nalani Brun, Kauai County; Randall Fujiki, At Large; Jill Kuramoto, At-Large; Michael Marshall, Ronald Michioka, Honolulu County; Hawaii County; Janet Sato, Maui County

SFCA Staff Present

Karen A. Ewald, Interim Executive Director, Katelyn Sweeney Ching, Administrative Services Assistant, Jonathan Johnson, Arts Administrator, Rhiannon Keene, Secretary

Other Present via Zoom

Mamiko Carroll, Information Specialist, Elizabeth Baxter, Arts Program Specialist III, Alexandra Skees, Arts Program Specialist III

1. Call to Order

Susana Browne called the meeting to order at 11:30 am.

2. Approval of the Agenda

A motion to approve the agenda was made by Nalani Brun and seconded by Michael Marshall. The motion to approve the agenda was approved unanimously.

3. Statements from the Public

Susana Browne called for public statements. There were none.

4. Approval of Minutes of the Previous Meeting held on May 17, 2023

A motion to approve the minutes of the last General meeting held on May 17, 2023, was made by Ronald Michioka and seconded by Michael Marshall. The motion to approve the minutes was approved unanimously.

5. Announcements

Susana Browne called for announcements. Karen Ewald introduced the two commissioners recently appointed by the Senate, Randall Fujiki and Janet Sato. Both were officially welcomed to the board of commissioners.

6. New/Continuing Business for Discussion and/or Action

6.a Gift/Purchase Recommendations for the Art in Public Places Collection

Ronald Michioka presented the following works of art for recommendation by the full board

Arts & Letters Nu'uauu, "Marooned in Paradise: A Forty Year Love Story," curated exhibition (May 5, 2023 - June 10, 2023) AASC VACS: Emily McIlroy, Liz Train, Susan HogaSFCA: Eli Baxter

1. BRITT, Doug. 5837-23 "shipping blues"

acrylic on canvas, 36.5 x 44"

\$15,000.00

TOTAL: \$15,000

Bishop Square, Pauahi Tower Lobby, "Eleven," curated exhibition (May 18, 2023 - July 15, 2023)

AASC VACS: Mary Mitsuda, Susan Hogan, Kloe Kang, Felicity Yoost, Tom Klobe

SFCA: Eli Baxter

1. COLLINS, Calvin. 5842-23 "Don't Explain"
oil, enamel & Swarovski crystals on canvas, 59 X 59"
\$6500.00
2. RUNGE, Dieter. 5844-23 "The Cosmic Moment"
oil on canvas, 2023m, 48 x 60"
\$ 9000.00
- TOTAL: \$15,500.00

Honolulu Printmakers, Downtown Art Center, "95th Annual Exhibition," juried exhibition (June 5, 2023 - June 30, 2023) AASC VACS: Wendy Kawabata, Deborah Nehmad, Sally French SFCA COMM: Ronald Michioka SFCA: Elizabeth Baxter

1. IJIMA, Renee. 5845-23 "Kukui no Hikari (The Light of Kukui)"
mixed media: etching on handmade abaca paper, handmade kozo paper & silver leaf, ink, burning, 11.25 x 10.75 x 4.75 "
\$875.00
2. YUEN, Stephen. 5846.01-23 "Hausten Ditch in December. Study No 89. Signed edition 3 of 12"
archival quality inkjet print of 3D digital print art, 19.25 x 19.25 x 1.25"
\$400.00
3. YUEN, Stephen. 5846.02-23 "Printmakers Window. Study No 54. Signed edition 3 of 12"
archival quality inkjet print of 3D digital print art, 19.25 x 19.25 x 1.25"
\$400.00
4. LAKDAWALLA, Zenobia. 5848-23 "Aftermatter Print No. 3"
relief, mixed media, 22 x 30"
\$1300.00
5. MORINOUE, Hiroki. 5849-23 "Once Upon a Tree"
monoprint, 40.25 x 29.5"
\$3600.00
- TOTAL: \$6,575.00

A motion to recommend all pieces presented to the board was made by Michael Marshall and seconded by Randall Fujiki. The motion was approved unanimously.

6.b. Schedule Recommendations Art Acquisition Selection Committees

Ronald Michioka presented to the full board the recommendations to attend all the exhibitions that applied for the months of November-December 2023

1. 2023 Hawai'i Nei Art Exhibition, Wailoa Center, Hilo, HI
November 3-December 14, 2023
2. DAC presents Artists of Hawai'i 2023 - A Juried Exhibition Downtown Art Center, Honolulu HI
November 3-November 25, 2023
3. Marcia Morse & George Woollard, Maui Arts & Cultural Center, Schaefer International Gallery, Kahului, HI
November 14-December 30, 2023

A motion to approve the schedule recommendations for the AASC to attend all the exhibitions that applied was made by Nalani Brun and seconded by Michael Marshall. The motion passed unanimously.

6.c Hawaii State Capitol Art Advisory Committee Recommendation

Ronald Michioka presented to the full board the recommendation for individuals to serve on an art advisory committee to address the Capitol Pool. Administrators of the ongoing State Capitol Pools renovation project are requesting input from the SFCA and its Art Advisory Committee. SFCA recommended to appoint individuals and stakeholders to the State Capitol Pools Art Advisory Committee to make such recommendations. A motion to approve the Art Advisory Committee list was made by Janet Sato and seconded by Susana Browne. The motion passed unanimously.

6.d Daniel K. Akaka State Veterans Home Design Phase Recommendation

Ronald Michioka presented to the full board the recommendation to approve artist Kai‘ili Kaulukukui’s Final Design for Art in Public Places (APP) Commissioned Work of Art at the Daniel K. Akaka State Veterans Home. A motion to approve the Design Phase recommendation was made by Nalani Brun and seconded by Susana Browne. The motion passed unanimously.

6.e. Women’s Community Correctional Center: Hookipa Cottage Design Phase Recommendation

Ronald Michioka presented to the full board the recommendation to approve artist Jane DeDecker’s Final Design for Art in Public Places (APP) Commissioned Work of Art at Women’s Community Correctional Center: Hookipa Cottage. A motion to approve the Design Phase recommendation was made by Janet Sato and seconded by Randall Fujiki. The motion passed unanimously.

6.f. Waimea Canyon Middle School, Kauai Contract Amendment

Ronald Michioka presented to the full board the recommendation for artist Bud Spindt’s request for additional funds for the Art in Public Places Commissioned Work of Art at Waimea Canyon Middle School on Kaua‘i. This was for additional funds due to an increase in material costs due to the Covid-19 pandemic, which was a total of \$44,672.00. A motion to approve the amendment was made by Nalani Brun and seconded by Susana Browne. The motion passed unanimously.

6.g. Ellison Onizuka Kona International Airport at Keahole Contract Amendment

Ronald Michioka presented to the full board the recommendation for artist Calley O’Neill’s request for additional funds for the Art in Public Places Commissioned Work of Art at Kona Airport on Hawai‘i Island. This was for additional funds due to an increase in material, labor, and other costs due to the Covid-19 pandemic which was a total of \$162,000.00. A motion to approve the amendment was made by Janet Sato and seconded by Randall Fujiki. The motion passed unanimously.

7. Adjournment

Susana Browne called for motion to close the meeting. The meeting adjourned at 12:39 pm.

State Foundation on Culture and the Arts
REPORT TO THE BOARD REGARDING MAUI DISASTER
September 20, 2023

Background

On August 8, wildfires on Maui destroyed the town of Lahaina and Kula with devastating loss of life and property.

National Arts and Culture Strategies for State Arts Agencies Disaster Relief

While immediate broader response is focused on food, water, sanitation, and housing the displaced, State Arts Agencies can play an important role in recovery efforts. Specifically, as an information provider, identifying funding sources, developing partnerships and connecting people and resources. The long-term response to mental health is an area where the arts can make a difference.

Why support the Arts in the aftermath of disaster?

Arts can play a role in disaster recovery. Culture gives communities a purpose and a unifying rallying point. Culture provides a sense of well-being and helps people cope. Helping people support their culture will help in the long run as culture provides a sense of community and connectiveness. Following a disaster, mental health issues are forefront and the arts are in a position to help people with their mental health.

State Foundation on Culture and the Arts and the Maui disaster response effort

8/8 Maui Fire

8/9 Interim Executive Director Karen Ewald serves on the States Hawaii Emergency Management Team and has been logging in daily to monitor the State's Response.

8/9 SFCA staff reached out to artists, organizations and commissioners to check on their condition.

8/10 SFCA posted on Social Media response to fires

8/11 Vibe Jazz night was subdued and promoted monetary donations to Maui Strong fund of the Hawaii Community Foundation with QR codes posted throughout the building, at the check in table and in the script of the emcee. We will continue to promote this effort in future events (see attached)

8/14 SFCA staff collaborate on ideas to support with existing resources

8/15 Began conversation with the National Endowment for the Arts, Western States Arts Federation and the National Assembly of State Arts Agencies regarding best practice for recovery.

8/17 Zoom meeting with NASAA Executive Director Pam Breau who encouraged SFCA to prepare for a long recovery effort and participate in the NASAA Webinar on Disaster recovery and Grantmakers in the Arts training on supporting individual artists and culture workers in disaster recovery.

8/22 After gathering resources from NASAA, WESTAF and NEA, SFCA launched a web resources page similar to Covid recovery with links for artists and culture workers. <https://sfca.hawaii.gov/resources/disaster-resources/>

Currently SFCA is also working on the following efforts:

- SFCA Contractor Honolulu Theatre for Youth is working to redirect their traveling preschool show Under the Blue to communities affected by the fire, including shelters.
- The Museum Without Walls arts education program is a partnership between SFCA and Hawaii Community Foundation. SFCA put in \$40,000 and HCF is matching. The program will support teaching artists on the roster to apply in partnership with an organization, similar to artists in the schools with the difference that it's for arts education outside of school spaces. The program will be focusing on specific populations, one of them being those affected by the Lahaina fires.
- The SFCA is collaborating with the department of health on providing services to individuals and families who have been displaced from their homes on Maui. The project collaboration is funded by the Department of Health for \$110,000 and will support teaching artist and creatives presenting in various hotels in Kaanapali where individuals and families are sheltering.
- SFCA is named as a partner for the Craft Emergency Relief Fund (CERF+) Response. Hawai'i supports a unique and rich culture brimming with arts, including feather work, kapa (bark cloth), lei making, wood and stone carving, and contemporary craft. CERF+ is actively hearing from craft artists affected by the fires, and have already awarded three emergency relief grants to craft artists from Lahaina. We anticipate many more applications in the coming weeks and months. CERF+ has connected with partners within the affected region including the Hawai'i State Foundation on Culture and Arts, Hawai'i Arts Alliance, Hawai'i Craftsmen, and the Council for Native Hawaiian Advancement.

Conclusion

The community expectation and demand for funding support through relief grants outweighs the staff and funding resources of the SFCA. In order to develop a long term recovery plan, the SFCA will require additional staff and funding resources to support the Maui culture and arts sector.

State Foundation on Culture and the Arts
FY2024 DRAFT BUDGET NARRATIVE
September 20, 2023

SFCA Budget Allocations for FY2024

BUDGET FY2024

	FY 2022 (20% Legislative Reduction)	FY 2023	FY 2024	FY 2024 [10% restriction]
General Fund	\$765,594	\$759,784	\$773,496	\$666,790
Grants in Aid	\$0	\$0	\$0	
Special Fund	\$5,585,735	\$5,585,735	\$5,675,823	\$5,675,823
Federal Fund	\$750,700	\$805,300	\$907,500	\$907,500
NEA ARP*	\$759,500	0	0	0
Artist Fellowships		(\$200,000) CSRF	\$0	\$0
Creative Workforce		(\$500,000) CSRF	\$0	\$0
Bishop Museum	\$626,000 ARP	\$7,500,000	\$7,500,000	\$7,500,000
Bishop Museum CIP		\$10,000,000		
‘Iolani Palace	\$720,000 ARP	\$2,000,000	\$2,000,000	\$2,000,000
KKCC	\$59,860	\$65,670	\$59,860	\$59,860
TOTAL:	\$8,578,064	\$26,786,664	\$16,986,854	16,903,519

Total based on HB300 HD1 SD1 CD1 (SFCA budget FY22 and FY23 provided as reference).
CSRF= Coronavirus State Fiscal Recovery Relief Funds

BUDGET IMPLICATIONS

The SFCA operational expenditure plan, reflecting the agency's implementation of all expenditures during the year was submitted for departmental and administrative approval. Budget highlights include the following discussion points:

DISCUSSION

1. The administration imposed a 10% restriction on the Legislative General fund budget but not on line items for Bishop museum or Friends of Iolani Palace.
2. SFCA is prioritizing funding of education and arts organizations. 55 eligible organizations applied for Biennium Grants for a total request of \$760,000. We expect to fund 41 organizations with \$545,000.
3. All 124 schools that applied for Artists in the Schools (AITS) residencies will be funded for a total of \$945,382 including \$270,744 from Hawaii Community Foundation.
4. Bishop Museum and ‘Iolani Palace received General Fund line items. Funds to be administered following issuance of instructions from the Administration through the Department of Budget and Finance.
5. The SFCA is managing four grants in aid to arts and culture organizations although the funding of the contracts is not reflected in the SFCA budget.
6. NEA Federal Fund increased to \$907,500.

RECOMMENDATION

The agency's priorities as determined by our strategic plan and the vision of our Executive Director and the Foundation's staff are represented in the preparation of this budget. We recommend **approval of the budget as presented, with the provision that the Executive Director has the authority to make adjustments as needed**. The Executive Director will notify the board if there are significant changes to the budget.

INCOME

PROJECT TITLE	HB300, HD1, SD1, CD1	5% Restriction	5% Contingency Restriction	10% TOTAL RESTRICTION	ALLOCATION FY 2024	GENERAL	FEDERAL	TRUST	SPECIAL	TOTAL
GENERAL FUND										
State Foundation on Culture & the Arts (AGS881/LA)										
SFCA Personnel (Payroll)	23,371				23,371	23,371				23,371
SFCA Operating	750,125			-83,335	666,790	666,790				666,790
KKCC Personnel (Payroll) #122889 (P)	59,860				59,860	59,860				59,860
TOTAL	833,356	-41,667	-41,667	-83,335	750,021	750,021				750,021
Line Item - Bishop Museum	7,500,000				7,500,000	7,500,000				7,500,000
Line Item - Iolani Palace	2,000,000				2,000,000	2,000,000				2,000,000
TOTAL LINE ITEMS	9,500,000				9,500,000	9,500,000				9,500,000
TOTAL-GENERAL FUND	10,333,356	-41,667	-41,667	-83,335	10,250,021	10,250,021				10,250,021
FEDERAL FUND										
Personnel (Payroll)	384,426				384,426		384,426			384,426
Operating	523,074				523,074		523,074			523,074
Difference between cash & ceiling					0		0			0
TOTAL-FEDERAL FUND*	805,300				907,500		907,500			907,500
KKCC-TRUST FUND										
Personnel (Payroll) #103501 (T)	70,175				70,175			70,175		70,175
TOTAL-TRUST FUND*	70,175				70,175			70,175		70,175
APP-SPECIAL FUND										
Personnel (Payroll)	1,362,887				1,362,887				1,362,887	1,362,887
Operating	4,312,936				4,312,936				4,312,936	4,312,936
TOTAL-SPECIAL FUND	5,675,823				5,675,823				5,675,823	5,675,823
Total Personnel (Payroll)	1,900,719	0	0	0	1,900,719	83,231	384,426	70,175	1,362,887	1,900,719
Total Operating	14,983,935				5,502,800	10,166,790	523,074		4,312,936	15,086,135
Total	16,884,654	0	0	0	7,403,519	10,250,021	907,500	70,175	5,675,823	16,903,519

(not including line items)

Federal NEA State Partnership Agreement FY24 award

(actual cash) = \$907,500, difference between cash and appropriation ceiling* = (\$102,200)

Of the \$10,333,356 General Fund Appropriation, \$750,125 is SFCA operating

10% General Fund Restriction = \$666,790

STATE FOUNDATION ON CULTURE AND THE ARTS
BUDGET - FISCAL YEAR 2024

PROGRAM: Grants & Programs					
DEPT: 903/904/905/907/908/909 (General=G-033/Federal=S-203/Special=S-319)					
PROJECT TITLE	PROJECT #	GENERAL	FEDERAL NEA	SPECIAL	TOTAL
Public Information					
Operating/Enews	901-103 / 900-103	5,574	16,885	36,085	58,544
Subtotal		5,574	16,885	36,085	58,544
Grants					
Biennium Grants Unrestricted	907-200	345,600	128,900		474,500
Biennium Grants Underserved Communities Restricted			70,500		70,500
Poet Laureate Unrestricted (Humanities-15350, Poet=20000)	902-290	20,000			20,000
Subtotal		365,600	199,400	0	565,000
Folk Arts Partnership					
Folk Arts Partnership Restricted	902-290		20,000		20,000
Folk Arts Unrestricted			30,000		30,000
Subtotal		0	50,000	0	50,000
Underserved Communities					
Underserved Communities Unrestricted	905-510				0
Underserved Communities Restricted (SCEP)		25,000	25000		50,000
Subtotal		25,000	25,000	0	50,000
Arts Education					
Prof Dev for Teaching Artists Unrestricted	908-890		35,500		35,500
Prof Dev for Teaching Artists Restricted				50,000	50,000
Prof Dev for Classroom Teachers Prog Support Unrestricted					0
Prof Dev for Classroom Teachers Prog Support Restricted			34,500		34,500
Teaching Artists Mentor Program Unrestricted					0
Arts Education Strategic Planning					
Poetry Out Loud Restricted	908-810		20,000		20,000
Subtotal		0	90,000	50,000	140,000
Artists in the Schools					
Artists in the Schools Grant (ATP) Unrestricted	908-880	133,900	60,000		193,900
Artists in the Schools Grant (ATP) Underserved Restricted					0
Artists in the Schools Grant (ATP) Restricted				480,765	480,765
Subtotal		133,900	60,000	480,765	674,665
TOTAL		530,074	441,285	566,850	1,538,209
Details:					
Restricted Federal Funds per State Partnership Agreement					
<i>Arts Education \$34,500</i>					
<i>Underserved Communities \$108,000</i>					
<i>Folk Arts Partnership \$20,000</i>					
<i>Poetry Out Loud \$20,000</i>					

**STATE FOUNDATION ON CULTURE AND THE ARTS
BUDGET - FISCAL YEAR 2024
DRAFT**

PROGRAM: Art in Public Places						
DEPT: 901						
PROJECT TITLE	PROJECT #	GENERAL	FEDERAL	PERSONNEL SPECIAL	OPERATING SPECIAL	TOTAL
Personnel	901-100			1,362,887		1,362,887
Admin Operating	900-100 / 901-101	98,462.00	29078		226,925.00	354,465.00
Special Fund Assessment	901-102				400,000.00	400,000.00
Public Information - Operations	901-103 / 903-100	5,574	16,885		36,085	36,085.00
Culture & Arts Promotion and Initiatives	900-503	62,508			137,121	199,629.00
Relocatable Works of Art Acquisitions	901-501				275,450.00	275,450.00
Exhibition Services	901-502				201,600.00	201,600.00
Hawai'i State Art Museum	901-503				1,049,724.00	1,049,724.00
Commissioned Works of Art	901-601				1,052,938.00	1,052,938.00
Registration	901-701				24,000.00	24,000.00
Conservation of Commissions	901-801				302,328.00	302,328.00
Conservation of Relocatable Works of Art	901-802				26,000.00	26,000.00
Conservation of Others	901-803				50,000.00	50,000.00
Work of Art - Arts Education Interpretations	901-880				530,765.00	530,765.00
Total		166,544	45,963	1,362,887	4,312,936.00	5,865,871.00
			Special Funds Allotment outside of APP:			
			Admin Operating 226,925			
			Public Information 36,085			
			WoA - AE Interpretations 530,765			
Details:						
Operating includes general expenses for leasing equipment, supplies, maintenance, staff training, alarm contract, servicing and maintenance of facilities,						
ED travel, operation and maintenance of APP vehicle, shared due costs for agency.						
Special Fund Assessment: Intradepartmental fees assessed for administration of interest from Special Fund investments						
Culture & Arts Promotion: per H.R.S. §9-3 (3), §9-3 (4) and §9-21 (2)						
Relocatable Works of Art Acquisitions: Artworks purchased for APP Collection through selection committee						
Exhibition Services: Includes costs for exhibition development, installation, crating and shipping, insurance, collection maintenance, equipment, travel, supplies						
Hawai'i State Art Museum: exhibitions, publicity, education, volunteer programs, security, supplies purchasing, repair and maintenance of equipment,						
Commissioned Works of Art: Includes professional service fees, installation costs, rental of equipment, travel, costs for dedication ceremonies and fabrication inspection						
Registration of Works of Art: Cataloging, digitizing and documentation costs relative to State art collection						
Conservation: Includes examinations, proposals and treatments of artworks						
Conservation of Others includes: KKCC \$50K						

STATE FOUNDATION ON CULTURE AND THE ARTS
BUDGET - FISCAL YEAR 2024
DRAFT

PROGRAM: Administration					
DEPT: 900					
PROJECT TITLE	PROJECT #	GENERAL	FEDERAL	SPECIAL	TOTAL
Admin Operating	900-100	98,462	54105.00	226,925	379,492
Federal Operating	900-100		162,644		162,644
Board Operating	900-200	4,000		6,600	10,600
WESTAF Membership	900-500		2,779	16,597	19,376
NASAA Membership	900-500		10,038		10,038
TOTAL		102,462	229,566	250,122	582,150
Details:					
Admin Operating includes office supplies, postage, membership dues, subscriptions, license renewal, repair, leasing and maintenance of office equipment, out-of-state travel to and WESTAF regional meetings.					
Board operating includes general travel costs and Commission meetings.					
WESTAF Membership budgeted at \$22,130 (\$16,597 Special and \$5,533 Federal)					
NASAA Membership budgeted at \$20,075					
Strategic Planning \$75,000					
General Fund (i.e. ED NI Travel, Operational)					
Federal Fund (i.e. ED, staff & commissioners travel to WESTAF and NASAA, Operational)					
Special Fund Operating (i.e. Westaf Membership, Operational, Collection and Grant Database)					

STATE FOUNDATION ON CULTURE AND THE ARTS
BUDGET - FISCAL YEAR 2024
DRAFT

FY2024 SUMMARY - DRAFT						
PROJECT TITLE		GENERAL	FEDERAL	SPECIAL	KKCC TRUST	TOTAL
General Fund Operating		666,790				666,790
Special Fund Operating				4,312,936		4,312,936
Federal Fund Operating			523,074			523,074
						0
Total Operating		666,790	523,074	4,312,936		5,502,800
Line Item - Bishop Museum		7,500,000				7,500,000
Line Item - Iolani Palace		2,000,000				2,000,000
Total Line Items		10,166,790	523,074	4,312,936		9,500,000
Payroll-General Fund		83,231				83,231
Payroll-Federal Fund			384,426			384,426
Payroll-Trust					70,175	70,175
Payroll-Special Fund				1,362,887		1,362,887
Total Payroll		83,231	384,426	1,362,887	70,175	1,900,719
TOTAL		10,333,356	907,500	5,675,823	70,175	16,986,854
*General fund appropriation with 10% restriction applied - \$666,790						

BACK TO TOP

**Art in Public Places Program
Relocatable Works of Art
September 20, 2023**

Purchase Recommendations for the Art in Public Places Collection

Donkey Mill Art Center, "Mai Ka Pouli: (Re)presentations of Moananuiākea," curated exhibition (March 18, 2023 - July 8, 2023)

AASC VACS: Hiroki Morinoue, Wayne Levin
SFCA Comm: Michael Marshall
SFCA: Eli Baxter, Karen Ewald

1. KUALI'I, Ian. 5838-24 "'A'ole Ke Ki'i Holo'oko'a (Not the Whole Picture)"
hand-cut kapa, 2023, 34 x 49"
\$4,444.00



2. MARZAN, Marques Hanalei. 5839-24 "Embraced in Memory"
cotton rope, 2023, 42 x 38 x 1.5"
\$5,000.00



3. SOUZA, Miki'ala. 5840-24 "Personal Archive: Kai"
monotype and papercutting, 2023, 16.25 x 14.25"
\$490.00



4. TUFFERY, Michel. 5841.01-.7-24 "Te Moana Nui a Kiwa Series - Fanua in the Beginning"
pigment inks on Hahnemuhle photo rag 308 cotton paper, 2021, 21 x 21" each
\$17,500.00





TOTAL

\$27,434.00

Bishop Square, Pauahi Tower Lobby, "Eleven," curated exhibition (May 18, 2023 - July 15, 2023)

AASC VACS: Mary Mitsuda, Susan Hogan, Kloe Kang, Felicity Yoost, Tom Klobe
SFCA: Eli Baxter

1. KHEWHOK, Sanit. 5843-24 "Complexity in Horizon #2"
oil on canvas, 2017, 36 x 48"
\$4,000.00



TOTAL

\$4,000.00

Honolulu Printmakers, Downtown Art Center, "95th Annual Exhibition," juried exhibition
(June 5, 2023 - June 30, 2023)

AASC VACS: Wendy Kawabata, Deborah Nehmad, Sally French

SFCA COMM: Ronald Michioka

SFCA: EB

1. LAKDAWALLA, Zenobia. 5847-24 "Aftermatter Form No. 7"

relief printed paper and resin, 2022, 22 x 29 x 5"

\$800.00



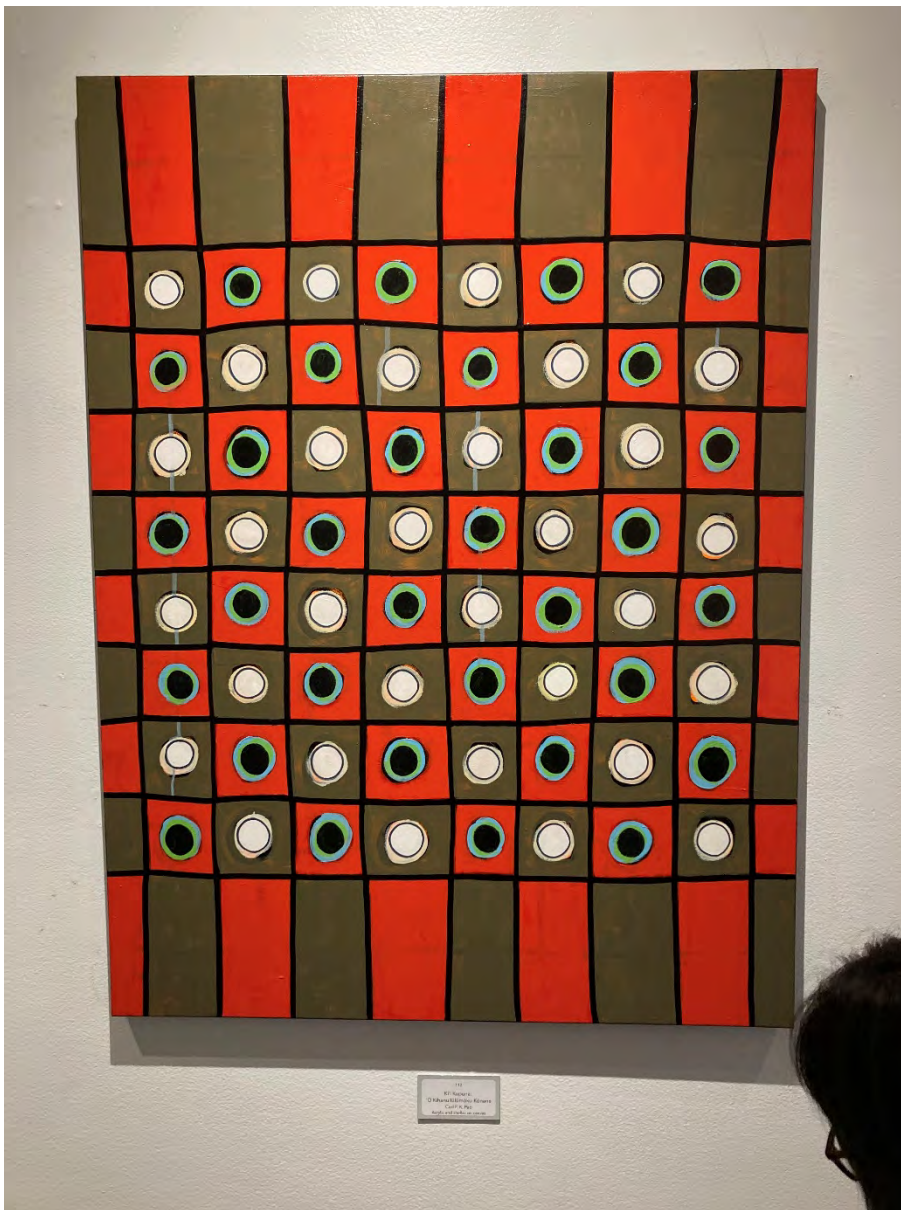
TOTAL

\$800.00

Hawaii Island Art Alliance, Wailoa Center, "6th Annual MidSummer Art Celebration,"
juried exhibition (June 2, 2023 - June 28, 2023)

AASC VACS: AASC VACS: Codie King, Meidor Hu
SFCA: EB, KE

1. PAO, Carl F. K. 5850-24 "KI'I KUPUNA: 'O KIHANUILŪLŪMOKU-KŌNANE"
acrylic and shellac on canvas, 2023, 48 x 36"
\$ 9000.00



2. PAO, Carl F. K. 5851-24 "KI'I KUPUNA: 'O 'AILĀ'AU-MAKALAU"
acrylic and shellac on canvas, 2023, 48 x 36"
\$ 9000.00



3. TOMONO, Lonny. 5852-24 "Head"
graphite on primed wood, 2023, 9.5 x 6.5 x 5.5"
\$ 1,500.00



4. TOMONO, Lonny. 5853-24 "Untitled"
graphite on primed wood, 10.5 x 7 x 5.5"
\$ 1,500.00



TOTAL

\$21,000.00

Box Jelly Ward, "Artist in Residence Exhibition: Jenna Macy," curated exhibition (June 2, 2023 - August 31, 2023)

AASC VACS: Jonathan Johnson, Henry McMahon, Greg Northrup

SFCA Comm: Ronald Michioka

SFCA: Eli Baxter

1. MACY, Jenna. 5854-24 "Heliconia Harness"

ceramic, glaze, mood ring pigment, lacquer, nylon rope flocking, 2023, 20 x 38 x 5"

\$500.00



TOTAL

\$500.00

Maui Arts & Cultural Center, "MACC Biennial 2023" - biennial, juried (July 5, 2023 - August 26, 2023)

AASC VACS: Neida Beringer, Paul James-Browne, Dick Nelson

SFCA COMM: Susana Browne

SFCA: Eli Baxter

1. BATTAN, Enrico. 5855-24 "Collapse"

glass, 2023, 15 x 15 x 6.5"

\$ 3,500.00



2. KING, Codie M. 5856-24 "Slow Burn"
cement, pigments, clay, plastics, pumice, 2023, 12 x 67 x 24"
\$ 5,900.00



3. JOAQUIN, Eduardo. 5857-24 "Sabong"
oil on canvas, 2023, 61 x 49"
\$ 6,000.00



4. JOHNSON, Claudia. 5858-24 "Solace"
strawberry guava, java plum, koa, paint, varnish, wire, 2023, 66 x 66 x 5"
\$ 15,000.00



5. YURDANA, Keith 5859-24 "Liminal No. 4"
graphite, acrylic paint and ink on paper, 2023, 47 x 34"
\$4,800.00



TOTAL

\$35,200.00

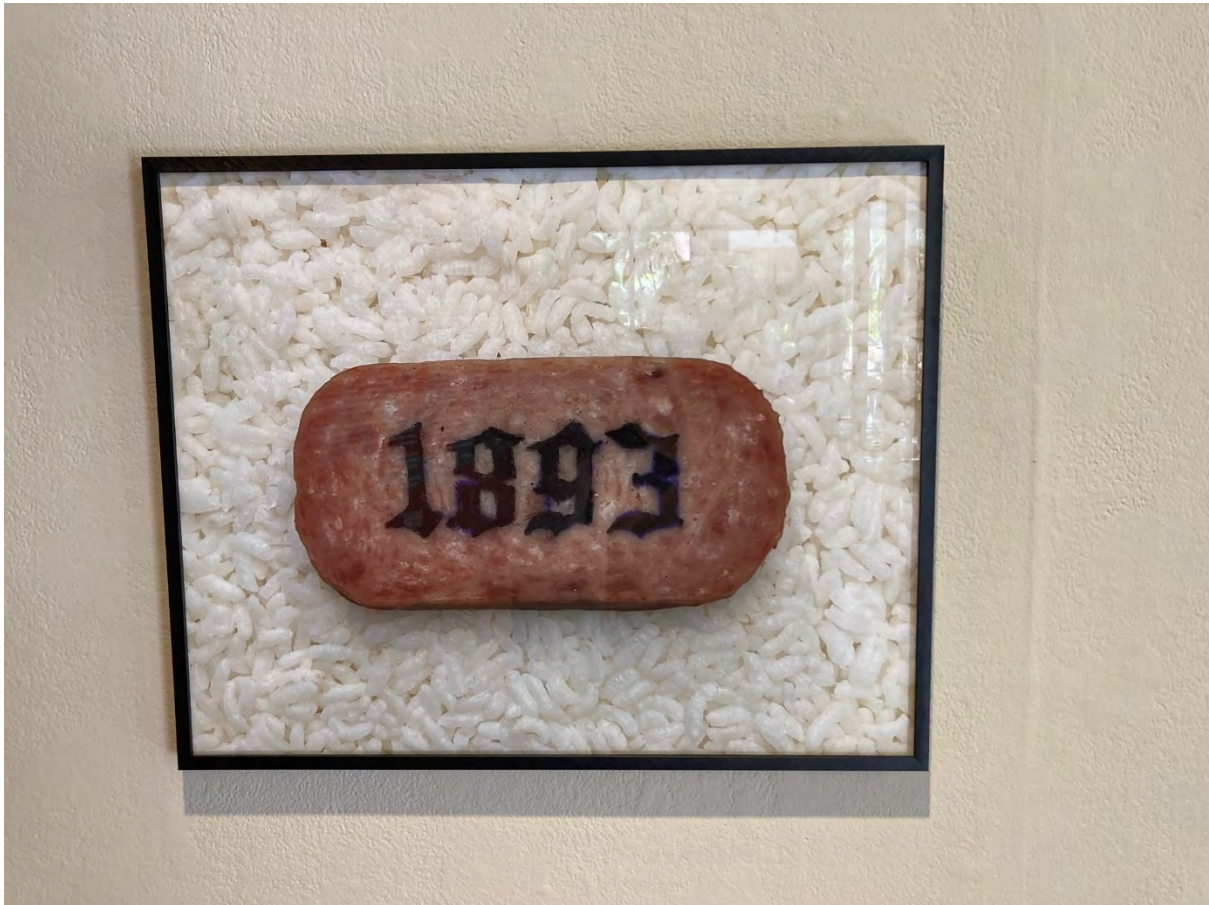
**Pu'uhonua Society, Koa Gallery, Kapiolani Community College, "'Ai Pohaku, Stone Eaters,"
curated (May 29, 2023 - August 25, 2023)**

AASC VACs: Maya Portner, Jaime Hamilton

SFCA: EB, KE, JJ

Com: Ronald Michioka

1. TALLETT, Keith. 5860-24 "Spam, 1893"
digital print with artist frame, 2023, 16 x 20"
\$2,400.00



TOTAL

\$2,400.00

**Pu'uhonua Society, Ho'ikeakea Gallery, Leeward Community College, "'Ai Pohaku, Stone
Eaters," curated (May 29, 2023 - August 25, 2023)**

AASC VACs: Maya Portner, Jaime Hamilton

SFCA: EB, KE, JJ

Com: Ronald Michioka

1. LANDGRAF, Kapulani. 5861-24 "Holehole"
hand-stamped silver gelatin collage, 2010, 48 x 24"
\$9,000.00



2. AHSING, Nālamakūikapō. 5862.01-.12-24 "Mākālei
'ohe kāpala, pa'u and 'alaea on handmade hau paper, 2023, 82 x 134"
\$42,000.00



3. ENOS, Solomon. 5863.01-.05-24 "Futuristic Wa'a Series"
acrylic and graphite on bristol board. 2017, 15 x 18" (each)
\$9,800.00







TOTAL

\$60,800.00

**Pu'uhonua Society, East-West Center Art Gallery, UH Manoa, "'Ai Pohaku, Stone Eaters,"
curated (May 3, 2023 - August 13, 2023)**

AASC VACs: Maya Portner, Jaimey Hamilton

SFCA: EB, KE, JJ

Com: Ronald Michioka

1. LAGUNERO, Al. 5864-24 "Hō'ike"

oil on canvas. 2014, 36 x 48"

\$12,400.00



TOTAL

\$12,400.00

[BACK TO TOP](#)

State Foundation on Culture and the Arts
Art in Public Places
STAFF REPORT
July 19, 2023

REQUEST:

Approve recommended schedule for Acquisition Award Selection Committee (AASC)
for November 2023 – January 2024

FACTS:

Submitted requests:

1. Portal 2 @ Firehouse Gallery

Exhibition Opening Date:

2023-11-04

Exhibition Closing Date:

2023-12-24

Location of Exhibition:

Firehouse Gallery at The Waimea Arts Council
67-1201 Mamalahoa Highway
Kamuela, HI 96743

Juried Exhibition Description:

This juried competition, open to all Big Island artists, pushes participant creativity beyond the norm. What does PORTAL mean? Artists are asked to check dictionaries or a thesaurus and use those synonyms to spark artistic interpretation in unforeseen directions, however unusual. The resulting "PORTAL" should be evident to Juror and onlookers alike.

2023 JUROR BIOGRAPHIES: Matthew Harper and Wilfred Yamasawa

Matthew Harper owns the Kona Frame Shop and comes to the island with a strong background in curatorial skills and installation. He holds a BA in Art History from the University of Alabama and interned at the Ferguson Gallery on campus and briefly at the Art Institute of Chicago. He then was Chief Registrar/Collection Manager for the Bernard A. Zuckerman Museum of Art at Kennesaw State University in Atlanta (2008-16). During that time, he also was a curator in the Dept. of American Art at the High Museum in Atlanta (2009-11), overseeing the installation of James McNeill Whistler etchings. He has worked on over 50 exhibitions in his diverse career.

Wilfred Yamasawa grew up in Honaunau, Kona, on a coffee farm and went on to earn BFA and MFA degrees in sculpture from the University of Hawai'i, Manoa. He began working with glass in 1977 and established his studio in 1980 in Holualoa on the slopes of Hualalai. Wilfred spends his time working with glass from March to

August and managing his coffee farm from September to February. Wilfred's artwork has been widely exhibited in juried shows throughout the state and is represented in galleries on the mainland. His pieces have been featured in the Hawaii State Foundation on Culture and the Arts, and he was awarded an Award of Excellence by the Hawaii Craftsman in 2007. In 1996, the Corning Museum of Glass selected Wilfred's "Spoiled Child" vase as one of only 100 pieces for inclusion in its highly competitive international New Glass Review 17. Wilfred is also a published poet, with works featured in literary publications in Hawaii and nationally.

percentage that artists receive from the sale of their works:

Artists receive 50% of sales.

www.waimeaartscouncil.org

2. Mai Nā Kūpuna Mai @ University of Hawai'i at Mānoa, The Art Gallery

Exhibition Opening Date:

2023-11-19

Exhibition Closing Date:

2024-02-11

Location of Exhibition:

University of Hawai'i at Mānoa
The Art Gallery (Art Building)
2535 McCarthy Mall
Honolulu, HI 96822

Curated Exhibition Description:

Mai Nā Kūpuna Mai, which translates as "from the ancestors," references the mele by the same name, which speaks of intergenerational knowledge and the support drawn from kūpuna. This exhibit focuses on the work of two artists who are treasures of Hawai'i and were innovators of the Hawaiian Renaissance of the 1990s, Maile Andrade and Sean Kekamakupa'a Lee Loy Browne. Andrade and Browne speak of the inspiration they draw from their ancestors in their art practices. Andrade draws from the traditional practice of kapa to make her contemporary sculptures and installations. Browne explores traditional and contemporary approaches to form through bringing a kanaka aesthetic to materials such as bronze, limestone, basalt, and Styrofoam. Both artists have been asked to choose several artists that they have mentored. They chose Puni Jackson, Charlton Kupa'a Hee, Kawika Lum-Nelmida, Marques Hanalei Marzan, Abigail Romanchak, Cory Taum, and Maika'I Tubbs, who are all significant artists. Curated by Debra Drexler, artist, curator, the Interim Department Chair and Professor of Drawing and Painting at the University of Hawai'i at Manoa, as well as the Acting Gallery and Museum Director at UH Manoa.

Artists receive 100% of sales pf artwork.

3. 2024 Annual Juried Exhibition @ Hui No'eau Visual Arts Center

Exhibition Opening Date:

2024-01-12

Exhibition Closing Date:

2024-02-16

Location of Exhibition:

Hui No'eau Visual Arts Center
2841 Baldwin Ave.
Makawao, HI 96779

Juried Exhibition Description:

This prestigious competition gives visitors an opportunity to view current work by local artists in all media. Nationally renowned guest jurors from Maui, Hawai'i and beyond offer a different perspective for a unique show every year. Ceramics, printmaking, sculpture, photography, painting, drawing, jewelry, digital media, fiber, wood, mixed media and all other creative explorations are welcome. With no theme, this exhibition challenges artists to submit their best work created within the past two years. This year's juror is artist Jodi Endicott. Her artworks have been presented in solo or group exhibitions in museums and galleries in the United States and Japan, including the Tokyo Metropolitan Art Museum; the Hawaii State Art Museum; the Contemporary Museum in Honolulu, Hawai'i; Maui Arts & Cultural Center, in Kahalui, Maui and Hui No'eau in Makawao, Maui as well as recently in Khatmandu and Korea with the International Artists Association.

List percentage that artists receive from the sale of their works:

50%

RECOMMENDATION:

Staff recommends AASCs to be convened for all the AASC applications listed above.

BUDGET IMPLICATIONS:

Variable amount per acquisition recommendation. FY2024 Budget per Quarter is approximately \$54,000.

Prepared by:

Elizabeth Baxter, Curator

date: September 20, 2023

Recommend:

c Approval

Disapproval

Karen Ewald, Interim Director

Date

[BACK TO TOP](#)

State Foundation on Culture and the Arts
Art in Public Places

STAFF REPORT
(September 20, 2023)

RECOMMENDATION: To approve the 3 non-state loan requests by the Isamu Noguchi Foundation and Garden Museum, the Queensland Art Gallery and the Maui Arts & Cultural Center.

All works of art requested are currently on Oahu.

All galleries are climate-controlled with trained security. Comprehensive wall-to-wall fine art insurance will be provided by all institutions throughout the run of the loan. Transportation, installation, facilities, and security will conform to the highest industry standards.

1. Isamu Noguchi Foundation and Garden Museum

EXHIBITION: *Toshiko Takaazu: Garden of Forms*

COORDINATORS: Kate Wiener, co-curator, Assistant Curator
Glenn Adamson, co-curator, Art Historian
Leilehua Lanzilotti, co-curator, Composer
Dakin Hart, co-curator, Former Senior Curator
Larry Giacoletti, Registrar and Collections Manager

WHERE and WHEN: The Noguchi Museum (March 20 – July 28, 2024)

Cranbrook Art Museum, Bloomfield Hills, MI (September 7, 2024 – January 12, 2025)
Museum of Fine Arts, Houston, TX (February 23 – May 18, 2025)
Honolulu Museum of Art, Honolulu, HI (March – June 2026)

WHY: The Isamu Noguchi Foundation and Garden Museum is organizing an expansive traveling retrospective showcasing the pioneering artist, Toshiko Takaazu. Marking the first nationwide retrospective of Takaazu's oeuvre in two decades, the exhibition will showcase the remarkable breadth and depth of her artistic journey by featuring her exceptional work spanning various mediums.

2. Queensland Art Gallery, Gallery of Modern Art

EXHIBITION: *The 11th Asia Pacific Triennial of Contemporary Art*

COORDINATORS: Ruha Fifita, Curatorial Assistant
Tiffany Noyce, Senior Registrar

WHERE: Queensland Art Gallery, Gallery of Modern Art

WHEN: November 30, 2024, through April 27, 2025

WHY: The Asia Pacific Triennial (APT) has evolved into the Queensland Art Gallery's most globally acclaimed initiative, serving as a significant platform for contemporary artists from the Asia Pacific region to showcase their work. Previous APT's collectively attracted an impressive audience of approximately 1 million individuals. Participation in the exhibition could offer artist Bernice Akamine with extensive opportunities and exposure to other diverse communities throughout the Pacific. Inclusion in this exhibition is important for embracing cultural diversity, regional contributions, and promoting global awareness of Hawai'i's artistic community.

3. Maui Arts & Cultural Center

EXHIBITION: *Marcia Morse & George Woollard*

COORDINATORS: Jonathan Yukio Clark, Director

WHERE: Maui Arts & Cultural Center's Schaefer International Gallery

WHEN: November 14 – December 30, 2023

WHY: Maui Arts & Cultural Center is organizing a retrospective of prominent Hawai'i artists Marcia Morse and George Woollard. The exhibition will showcase significant bodies of their work that provide insight into the artists' prominent careers. The exhibition will include early pieces, dating back to the 1970s, and will highlight their significant contributions to Hawai'i's art community.

State Foundation on Culture and the Arts
Art in Public Places

STAFF REPORT
(September 20, 2023)

RECOMMENDATION: To approve the Isamu Noguchi Foundation and Garden Museum's request to borrow the 3 works (see attachment) by Toshiko Takaezu in the APP Collection for a large-scale touring retrospective of the artist.

EXHIBITION: *Toshiko Takaezu: Garden of Forms*

COORDINATORS: Kate Wiener, co-curator, Assistant Curator
Glenn Adamson, co-curator, Art Historian
Leilehua Lanzilotti, co-curator, Composer
Dakin Hart, co-curator, Former Senior Curator
Larry Giacoletti, Registrar and Collections Manager

WHERE and WHEN: The Noguchi Museum (March 20 – July 28, 2024)
Cranbrook Art Museum, Bloomfield Hills, MI (September 7, 2024 – January 12, 2025)
Museum of Fine Arts, Houston, TX (February 23 – May 18, 2025)
Honolulu Museum of Art, Honolulu, HI (March – June 2026)

WHY: The Isamu Noguchi Foundation and Garden Museum is organizing an expansive traveling retrospective showcasing the pioneering artist, Toshiko Takaezu. Marking the first nationwide retrospective of Takaezu's oeuvre in two decades, the exhibition will showcase the remarkable breadth and depth of her artistic journey by featuring her exceptional work spanning various mediums.

All works of art requested are currently on Oahu.

OTHER: The museum is climate-controlled with a trained security supervisor. Comprehensive wall-to-wall fine art insurance will be provided by the Noguchi Museum throughout the run of the retrospective. Transportation, installation, facilities, and security will conform to the highest industry standards.

ATTACHMENTS:

1. Letter of Request
2. List of Works of Art Requested

IMAGE	TITLE	MEDIUM	DATE	DIMS
	<i>Peacock Rug</i>	fiber	1952-1953	124 x 45 1/2
	<i>Lava II</i>	acrylic on canvas	1969	35 1/4 x 35 1/4
	<i>Shiro Momo</i>	porcelain sculpture	1992	21 1/8 x 14 1/2 x 14 1/2

State Foundation on Culture and the Arts
Art in Public Places

STAFF REPORT
(September 20, 2023)

RECOMMENDATION: To approve the Queensland Art Gallery, Gallery of Modern Art's request to borrow the 2 works (see attachment) by Bernice Akamine in the APP Collection for a future exhibition in Brisbane, Australia.

EXHIBITION: *The 11th Asia Pacific Triennial of Contemporary Art*

COORDINATORS: Ruha Fifita, Curatorial Assistant
Tiffany Noyce, Senior Registrar

WHERE: Queensland Art Gallery, Gallery of Modern Art

WHEN: November 30, 2024, through April 27, 2025


WHY: The Asia Pacific Triennial (APT) has evolved into the Queensland Art Gallery's most globally acclaimed initiative, serving as a significant platform for contemporary artists from the Asia Pacific region to showcase their work. Previous APT's collectively attracted an impressive audience of approximately 1 million individuals. Participation in the exhibition could offer artist Bernice Akamine with extensive opportunities and exposure to other diverse communities throughout the Pacific. Inclusion in this exhibition is important for embracing cultural diversity, regional contributions, and promoting global awareness of Hawai'i's artistic community.

All works of art requested are currently on Oahu.

OTHER: The museum is climate-controlled with 24-hr guard security and surveillance. Comprehensive wall-to-wall fine art insurance will be provided by the institution, along with transportation, packing, and return costs.

ATTACHMENTS:

1. Letter of Request
2. List of Works of Art Requested

IMAGE	TITLE	MEDIUM	DATE	DIMS
	<i>Kapa Moe: Hae Hawai'i</i>	kapa, cotton thread	2021	6'4 x 6'4
	<i>The Queen's Quilt</i>	kapa, cotton thread	2023	24 x 24 each (6 panels)

State Foundation on Culture and the Arts
Art in Public Places

STAFF REPORT
(September 20, 2023)

RECOMMENDATION: To approve the Maui Arts & Cultural Center's request to borrow the 4 works (see attachment) by Marcia Morse in the APP Collection for a future exhibition at the Schaefer International Gallery.

EXHIBITION: *Marcia Morse & George Woollard*

COORDINATORS: Jonathan Yukio Clark, Director

WHERE: Maui Arts & Cultural Center's Schaefer International Gallery

WHEN: November 14 – December 30, 2023


WHY: Maui Arts & Cultural Center is organizing a retrospective of prominent Hawai'i artists Marcia Morse and George Woollard. The exhibition will showcase significant bodies of their work that provide insight into the artists' prominent careers. The exhibition will include early pieces, dating back to the 1970s, and will highlight their significant contributions to Hawai'i's art community.

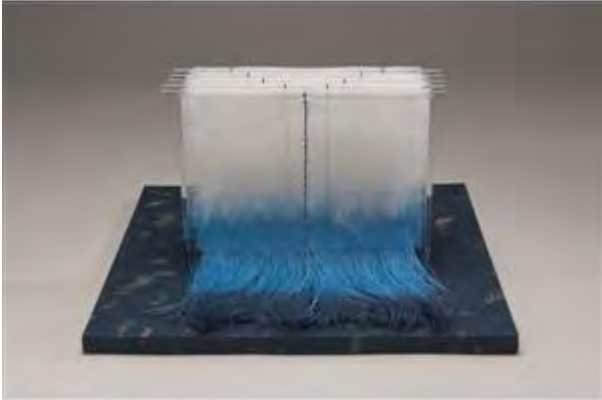

All works of art requested are currently on Oahu.

OTHER: The museum is climate-controlled guard security. Comprehensive wall-to-wall fine art insurance will be provided by the institution, along with transportation, packing, and return costs.

ATTACHMENTS:

1. Letter of Request
2. List of Works of Art Requested

IMAGE	TITLE	MEDIUM	DATE	DIMS
	<i>Paper Doors, Nightingale Floors I</i>	hand-made paper construction	1983	16 1/4 x 16 1/4 x 6 1/4
	<i>Pod</i>	handmade paper, maiden hair fern	1992	26 1/2 x 18 3/8 x 17 1/4

	<i>Quiet Rain</i>	mixed media	2006	7 1/4 x 15 x 15
	<i>Women in Black: Tears Like Rain</i>	fiber, mixed media	2008	8 1/4 x 15 x 15

[BACK TO TOP](#)



Art in Public Places Program
Commissioned Works of Art – HNL Mauka Concourse (5) Sculptures
Artists: Mark Chai (2), Doug Young (2) & Sean Browne (1)
Sept. 20th, 2023

STAFF REPORT TO THE COMMISSION

REQUEST:

This request is for contract amendments for commissioned works of art in the Mauka concourse of the new Daniel K. Inouye International Airport (HNL). The costs associated with the project are summarized below. The initial contract price was determined 10+ years ago to launch the projects with the anticipated budget increases contingent on design and the actual costs to execute the work at the time of installation. Each of the three artist contracts will be amended to reflect increases in costs.

Installation costs were anticipated to exceed the initial project budget because the work was executed post-occupancy during nighttime after hours following the opening of the terminal. Security supervision, badging requirements and protection of existing concourse architectural finishes also increased installation costs. Cost change orders were all pre-negotiated, reviewed and found to be within the range of acceptability.

Project Cost Summary:

ARTIST:	SFCA BASE CONTRACT:	MIRA INSTALLATION BASE CONTRACT	CHANGE ORDER:	PERCENT INCREASE:
Mark Chai:	\$150,000	\$18,000 (included within SFCA base)	\$54,904.29	36.6%
Doug Young:	\$265,000	\$29,500 (included within SFCA base)	\$111,548.54	42.1%
Sean Browne:	\$234,000	\$55,200 (included within SFCA base)	\$168,791.46	72.1%

Change Order Justification Summary:

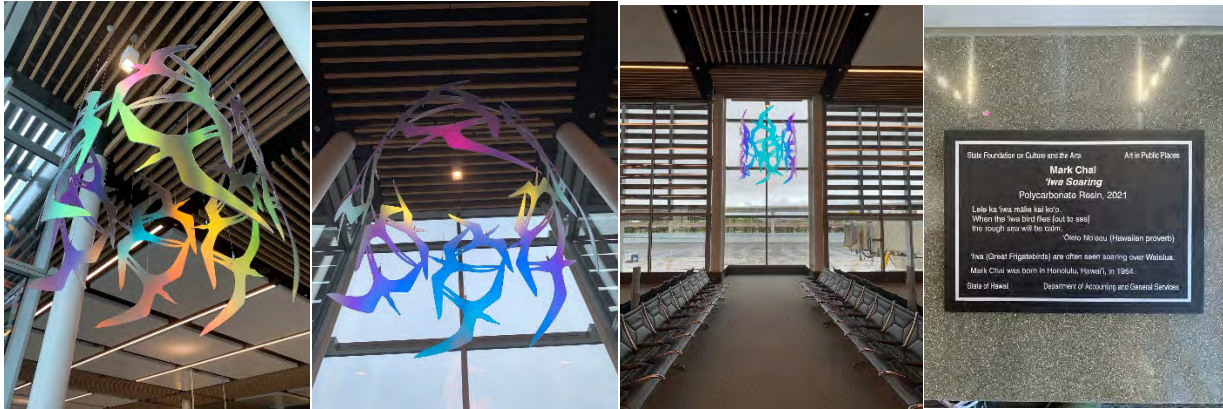
- Original budgets were placeholders without specific artwork designs
- 10-year escalation from project conceptualization to actual installation
- Material manufacturing cost increases and delays post pandemic
- Material shipping cost increases and delays post pandemic
- Material storage cost increases to house various materials as remaining materials trickled in
- DOTA Constrained working hours 11p-5a (6hr days) to accommodate flight schedules
- Difficult nightly contractor mobilization (security measures, route and distance to staging areas)
- DOTA processes and procedures for working in an occupied and sterile airport space
- Erection of construction barricades to safeguard the public
- Protective measures for movement through and over all architectural finishes ie. terrazzo flooring
- Additional coordination and weekly meetings with DOTA during construction phase
- Fabrication of custom rigging and cranes to mount 3-ton stone adze over 8.5-tons of concrete
- DOTA requested artwork lighting enhancements

PREPARED BY:

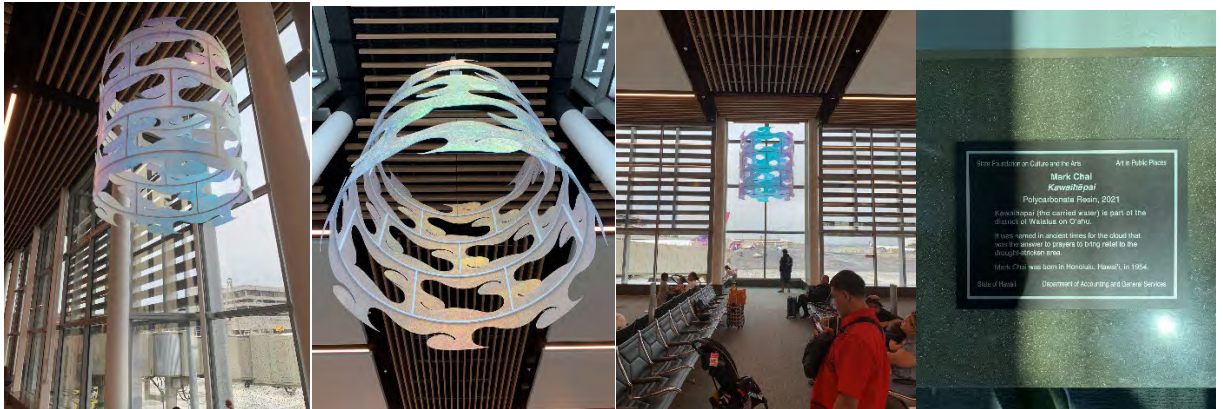
September 15th, 2023

Name/ Title: Aaron Ackerman/ Commissions Project Manager

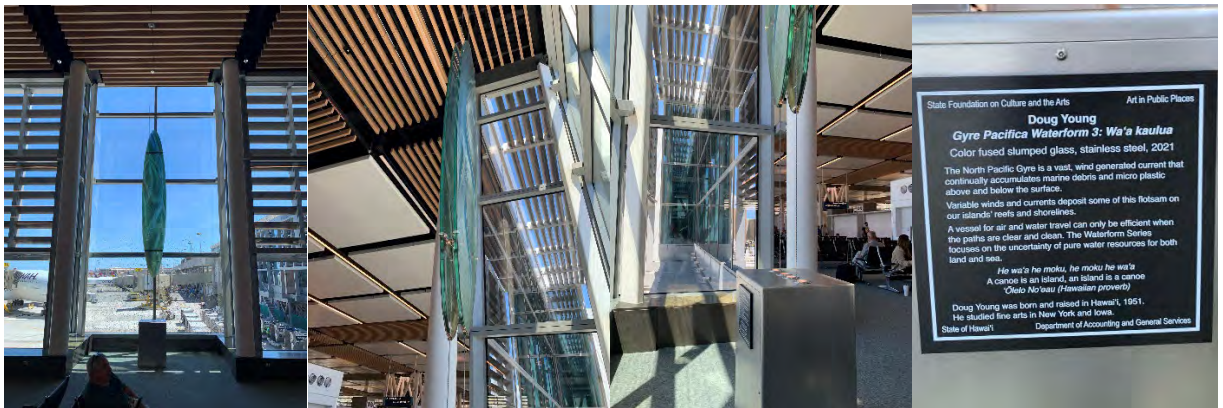
Date



MARK CHAI, 'IWA SOARING – Suspended Polycarbonate resin



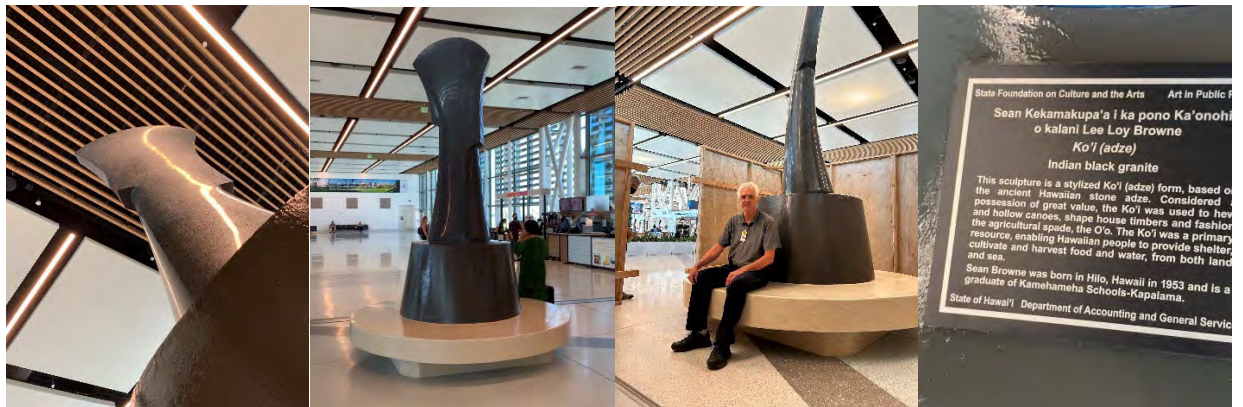
MARK CHAI, KAWAIHAPAI – Suspended Polycarbonate resin



DOUG YOUNG, WA'A KAULUA - Suspended Color fused slumped glass & stainless steel



DOUG YOUNG, KA'ENA SPIRIT WALL – Stacked glass on concrete



SEAN BROWNE, KO'I (ADZE) – Indian black granite & concrete