



2023
Annual Report

**State Foundation
on Culture and the Arts**



Table of Contents

STATE FOUNDATION on CULTURE and the ARTS

| | |
|--|-------|
| Board of Commissioners | 00 |
| Mission and Values | 1 |
| About the SFCA | 2 |
| SFCA Programs | 3 |
| Strategic Plan Highlights and Goals | 4-5 |
| Community Mahalo | 6 |
| Why Engagement Matters | 7 |
| Community Projects | 8 |
| Folk and Traditional Arts – Apprentice Mentoring Grant | 9 |
| “Under the Blue” theatrical experience | 10 |
| “Not All Backpacks Carry the Same Weight” student art exhibit | 11 |
| Arts Education | 12 |
| Moloka‘i Storytellers | 12-13 |
| Artistic Teaching Partners | 15 |
| Hawai‘i State Poet Laureate | 16 |
| Art in Public Places Program | 17 |
| Commissioned Works of Art | 18 |
| Art in Public Places Collection | 19 |
| State Art Museum | 20 |
| 2023 Exhibits | 20 |
| 2023 Program Highlights | 21 |
| King Kamehameha Celebration Commission Annual Report | 22-23 |
| ARTS FIRST Partnership Annual Report | 24-25 |
| 2022-2023 Financial Summary | 26-28 |
| Appendix A: Art in Public Places Program Purchases and Contracts | 29-31 |
| Appendix B: Grants and Community Program Contracts | 32-35 |
| Appendix C: Schools Served | 36-39 |
| Updates and Highlights | 40 |
| SFCA Staff | 41 |

Board of Commissioners

JULY 1, 2022 – JUNE 30, 2023

LLOYD UNEBASAMI • Chairperson

SUSAN BROWNE • At-Large

NALANI BRUN • Kaua'i County

TAYLOUR CHANG • At-Large

KĀLEWA CORREA • At-Large

RANDALL FUJIKI • At-Large

JILL KURAMOTO • At-Large

MICHAEL MARSHALL • At-Large

RONALD MICHIOKA • City & County of Honolulu

“

KA WA
MA MUA,
KA WA
MA HOPE ”

the time that came
before the time that follows

SARAH TAYLOR KO, SFCA ART IN PUBLIC PLACES COLLECTION



Mission & Values

MISSION

To promote, perpetuate, and preserve culture and the arts in Hawai'i.

VALUES

- We celebrate and emphasize the cultural richness and diversity of Hawai'i.
- We believe in equitable access, transparency, and community-based decision making.
- We share in the responsibility to perpetuate the Native Hawaiian culture and the arts.
- We view art and cultural engagement as critical to the educational, economic, and social well-being of individuals, communities, and the state of Hawai'i.

About the SFCA

The Hawai'i State Foundation on Culture and the Arts (SFCA) is Hawai'i's state government arts agency, established in 1965 by the Hawai'i State Legislature, through the vision and effort of Hawai'i leaders including architect and State Planning Coordinator Alfred Pries, SFCA Founding Chairperson Masaru "Pundy" Yokouchi, State Senator Nadao Yoshinaga, and Governor John Burns.

The creation of a state arts agency made Hawai'i eligible to receive federal grants from the National Endowment for the Arts (NEA), newly established on September 29, 1965. The SFCA is administratively attached to the Department of Accounting and General Services.

SFCA 2023-2024 Budget



\$26,732,064

TOTAL BUDGET

- Bernice Pauahi Bishop Museum
- Works of Art Special Fund Appropriation
- Friends of the 'Iolani Palace
- Federal Funds
- State General Funds Appropriation
- King Kamehameha Celebration Commission Trust Fund

\$17,500,000

(66%)

BERNICE PAUAHU BISHOP MUSEUM

\$2,000,000

(7%)

FRIENDS OF THE 'IOLANI PALACE

\$825,454

(3%)

STATE GENERAL FUNDS APPROPRIATION

\$5,585,735

(21%)

WORKS OF ART SPECIAL FUND APPROPRIATION

\$750,700

(3%)

FEDERAL FUNDS

National Endowment for the Arts Priorities of Education, Folk and Traditional Arts, and Underserved

\$70,175

(LESS THAN 1%)

KING KAMEHAMEHA CELEBRATION COMMISSION TRUST FUND

\$26,732,064

TOTAL BUDGET

What is a state arts agency?

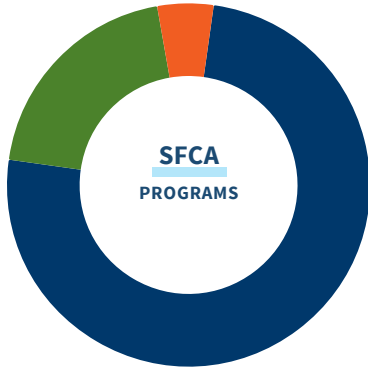
State arts agencies were created by legislatures and governors to promote the arts and reduce barriers to cultural participation. Every state and U.S. jurisdiction has a designated arts agency, providing grants, services, and leadership that make the arts accessible to everyone. State arts agencies help people and places to thrive by making our economy, our schools, our communities, and our connections with each other stronger through the arts.

State arts agencies are funded through appropriations from state legislatures. By law, state arts agencies also receive 40% of the federal grant dollars Congress provides to the National Endowment for the Arts.

Learn more about state arts agencies and regional arts organizations nationwide on the National Assembly of State Arts Agencies website:

NASAA-Arts.org/state-arts-agencies

SFCA Programs



GRANTS & PROGRAMS

Arts Education
Community Arts
Folk and Traditional Arts

ART IN PUBLIC PLACES PROGRAM

Public Art Collection
Hawai'i State Art Museum

KING KAMEHAMEHA CELEBRATION COMMISSION

Strategic Priorities & Vision

OUR VISION

We envision a thriving and vibrant Hawai'i enriched by culture and the arts.

Strategic Plan

The State Foundation on Culture and the Arts' (SFCA) goals are outlined in our current Strategic Plan which includes strategic priorities, vision, mission, and values. The plan is effective July 1, 2019 through June 30, 2023 as required by the agency's federal partnership with the National Endowment for the Arts. The priorities adopted are reflective of the input by the community, SFCA Commissioners and staff. In implementing the plan's priorities and accompanying strategies, SFCA intends to strengthen existing programs and services, pursue new initiatives, embrace a

culture of transparency and accountability, as well as set and meet benchmarks that communicate our intentions clearly to our staff, partners, and the broader community. State arts agencies are funded through appropriations from state legislatures. By law, state arts agencies also receive 40% of the federal grant dollars Congress provides to the National Endowment for the Arts.

STRATEGIC PRIORITIES



Culture

Support, foster and celebrate the artistic expressions of Hawaii's diverse cultures and communities.



Engagement

Enhance public engagement in culture and the arts.



Education

Strengthen arts education for all learners.



The Arts

Enrich the public sphere through the arts.

2023 Strategic Plan Implementation Highlights



Culture

- Sharing stories of Native Hawaiian creatives/practices/art through contemporary media: produced and distributed twelve videos celebrating Native Hawaiian creatives/practices/art. View these videos on the SFCA website: sfca.hawaii.gov/art-in-public-places-program.
- Building cultural capacity and public awareness of Native Hawaiian practices: ‘ulana ‘ie through Folk and Traditional Arts Apprentice Mentoring grant to Kumula‘au Sing and Haunani Balino-Sing (project: “Nā Akua Ākea (The Vast and Numerous Deities”, Hilo, Hawai‘i Island). Read more about this project on page 9.
- Administering \$17,500,000 to the Hawai‘i Museum of Natural and Culture History (Bishop Museum) and \$2,000,000 to the State of Hawai‘i Museum of Monarchy History (‘Iolani Palace).



Engagement

- Bringing back in-person museum programming, increasing attendance after COVID restrictions and closures.
- Collaborating with Honolulu Theatre for Youth to produce “Under the Blue” immersive art installation and sensory experience for young people with developmental differences (read more on page 10).
- Providing exhibition space for “Not All Backpacks Carry the Same Weight” art exhibit by Residential Youth Services and Empowerment (RYSE) and Moanalua High School’s English Honors classes (read more on page 11).



Education

- Hosting a three-day Teaching Artists Institute at the State Art Museum, training 70 teaching artists from five islands.
- Piloting Museum Without Walls programs, bringing arts education to non-school spaces (read more on page 11).



The Arts

- Expanding Art at the Capitol programming to include panel discussions and Honolulu Triennial videos, performance art, spoken word, and a printmaking workshop with legislators.
- Increasing purchasing of works of art by Native Hawaiians.



PHOTO CREDIT:
PRINCE DANCE COMPANY
PERFORMANCE AT THE STATE
ART MUSEUM

Strategic Plan: Fiscal Year 2024 Goals

Culture

- Host Festival of the Pacific Arts and Culture at the Hawai'i State Art Museum.

Engagement

- Collaborate with community organizations across the state to develop a new SFCA strategic plan.

Education

- Work with Arts First Partners to implement new core standards.

The Arts

- Rebranding the Hawai'i State Art Museum to increase public awareness and engagement in the arts.

Community Mahalo

Community panelists make decisions at the SFCA regarding grants, artwork commissions, art acquisitions and judging student competitions. With the dedication and expertise of these volunteers, we make informed decisions that result in effective programming. Mahalo to all who participated in the decision making of the SFCA in Fiscal Year 2023.

HAWAII ISLAND

| | |
|----------------|-----------------|
| Melissa Geiger | Fia Mattice |
| Maja Grajski | Hiroki Morinoue |
| Virginia Holte | Margo Ray |
| Meidor Hu | Larry Reitzer |
| Codie King | Sherm Warner |
| Wayne Levin | |

KAUA'I

Sally French
Terry Liu

MOLOKA'I

Alice Ka'ahanui

MAUI

Paul James Browne
Noah Harders
Becky Lind
Sarah Mitchel-Block
Moirra Pirsch
Michael Takemoto

O'AHU

| | | | |
|------------------|-------------------|---------------------|-----------------------------|
| Mark Branner | Carl Jennings | Laurel Nakanishi | Tehinamai Tafiti |
| Sean Browne | Sean Joseph-Choo | Deborah Nehmad | Kimi Takazawa |
| Gaye Chan | Kloe Kang | Greg Northrup | John Taukave |
| Zita Cup Choy | Wendy Kawabata | Clay Park | Travis Thompson |
| Justyn Dela Cruz | Carol Khewhok | Maika Pollack | Su'a Sulu'ape Aisea Toetu'u |
| Kamira Douddi | Rachael Kim | Maya Portner | Misa Tupou |
| Tommy Driskill | Wendy Kim Messier | Rosina Potter | Liz Train |
| Sonny Ganaden | Bryce Meyers | Saumolia Puapuaga | Cheryl Treiber-Kawaoka |
| Matt Gilbertson | Tom Klobe | Kim Taylor Reece | Inger Tully |
| Tara Gumapac | Katherine Love | Demiliza Saramosing | Noah Harders |
| Jaimey Hamilton | Michael Marshall | Brian Shin | Anthony Watson |
| Shayne Hasegawa | Emily Mclroy | Amanda Smith | Clara Whippy |
| Vincent Hazen | Henry McMahon | Dr. Maya Soetoro-Ng | Jordan Wolfe |
| Susan Hogan | Mary Mitsuda | Tony Su'a | Maile Yawata |
| Richard Horita | Camille Monson | Russell Sunabe | Felicity Yost |
| Wade Ishii | Michelle Morihara | Blair Suzuki | |



Why Engagement Matters

Honolulu Theatre for Youth performers rehearsing "Under the Blue" for children with developmental differences.

PHOTO CREDIT: HONOLULU THEATRE FOR YOUTH

We view art and cultural engagement as critical to the educational, economic, and social well-being of individuals, communities, and the State of Hawai'i.

Through our programs, we encourage people to embrace creative expression as an integral part of life in Hawai'i. Engagement includes arts integration in school curriculums, such as SFCA's Artists in the Schools residencies for grades K-12, and community programs, like Hawaiian History Month programming supported in part by grant funding from the SFCA.

2023 Community Project Highlights

By supporting state arts agencies through Partnership Agreements, the National Endowment for the Arts makes the arts available in more communities than it could through direct grants. The state arts agencies (such as the SFCA) greatly extend the federal reach and impact, translating national leadership into local benefit.

Grants are a major part of SFCA's outreach, providing funding to support nonprofit organizations, individuals, and schools that provide training and services in the arts, culture and humanities across the state.

Statewide Cultural Extension Program

The SFCA contract with the University of Hawai'i-Manoa Outreach College's Statewide Cultural Extension Program provides statewide access to arts and culture presentation through public libraries, senior centers, public housing communities, and online. In FY2023, these performances reached 4,147 people across the State.

Biennium Grants

Biennium Grants provides funding for organizations who support programs and projects that advance the arts, culture, and creativity in the lives of the people of Hawai'i.

Funds are distributed through the State to nonprofit organizations offering culture and arts programs, many of which reach the neighbor islands and underserved and rural areas.

See pages 33-34 for a full list of grantees and projects.

Grantee: Holualoa Foundation for Arts & Culture d.b.a. Donkey Mill Art Center

"In West Hawaii, 60-100% public school children are on the federally-funded free and reduced price lunch program, including close to 50% at nearby Holualoa Elementary.

Our exhibition program and studio huis in ceramics, print, metals, and fiber arts are increasing our network of practicing artists and indigenous cultural practitioners to inform, engage and unite our community. Exhibition plans are informed by Native Hawaiian cultural practitioners, curatorial staff personal experience, growing knowledge of indigenous curatorial practices and community perspectives.

In March 2023, Donkey Mill Art Center hosted Michel Tuffery, a New Zealand-based artist of Samoan, Rarotongan and Ma'ohi Tahitian heritage. During his residency, 9 teen students from the Hawaiian immersion school, Ke Kula 'O 'Ehunuikaimalino, worked directly with Michel to use the exhibition and the LACMA Pacific Island Photography Collection to pull inspiration from the collection and connect it to their ancestry and heritage.



Prince Lot Hula Festival:
Halau Hula Kauluokala, Kumu
Hula Uluwehi Guerro.
PHOTO CREDIT: MOANALUA
GARDENS FOUNDATION.

Keiki painting class,
Lāna'i Arts and
Culture Center.
PHOTO CREDIT: LĀNA'I ARTS
AND CULTURE CENTER



Ke Kumu Hawai'i cohort at their graduation ceremony
PHOTO CREDIT: LOGAN ESPIRITU | STATE FOUNDATION ON CULTURE AND THE ARTS

Folk and Traditional Arts – Apprentice Mentoring Grant

“Nā Akua Ākea (The Vast and Numerous Deities)” project,
Hilo, Hawai'i Island, Kumulā'au Sing and Haunani Balino-Sing.

Nā Akua Ākea aimed to revive and perpetuate the traditional art of 'ie'ie weaving, a significant cultural heritage in Hawai'i. The project encompassed several objectives:

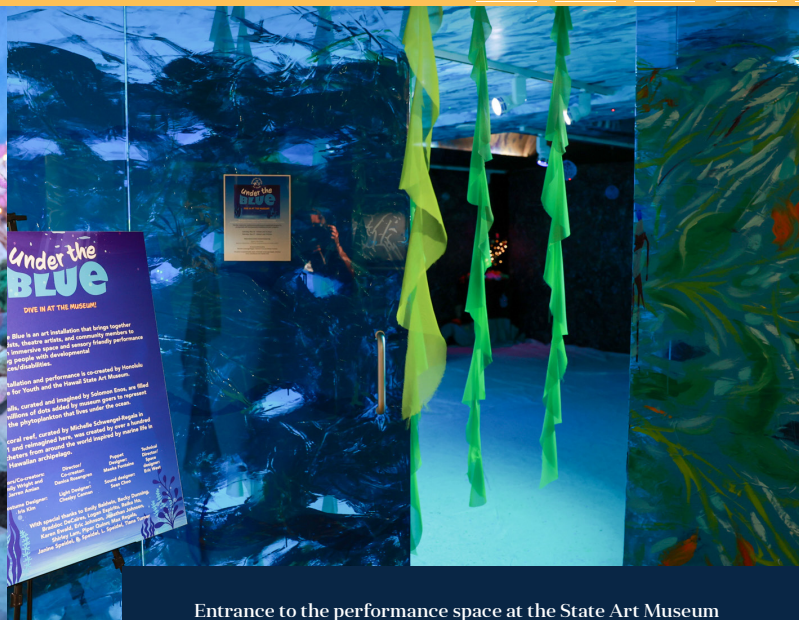
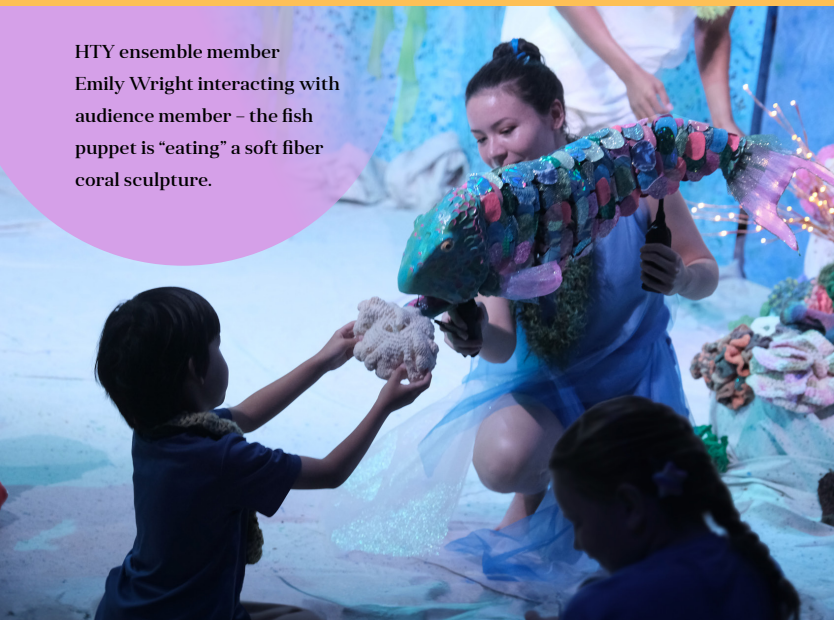
- Perpetuate the art of 'ie'ie weaving through research, documentation, and hands-on practice.
- Transmitting this knowledge to na haumāna (students) of all ages through mentorship.
- Strengthening the community's connections to their cultural roots.
- Showcasing the art form through public exhibitions and educational events.

During the year-long cohort, Kumulā'au and Haunani mentored six weavers in the traditional Hawaiian practice of 'ie'ie style basketry. The six haumāna learned to weave various forms of hīna'i (braided basket), hīna'i i'a (braided basket fish trap), and ki'i akua hulu manu; the ki'i being the final project which showcases the knowledge and skills they acquired. An 'ūniki graduation ceremony was held on Friday April 7, 2023 at Hawai'i Community College, Manono campus. The “Nā Akua Ākea Moku O Keawe Hilo-Pā'ie'ie” exhibit, showcasing the final student projects, was opened to public following the 'ūniki. Additional information about the cohort and a video of the exhibit are on the Ke Kumu Hawai'i website:

[KeKumuHawaii.com/moku-o-keawe-hilo](https://www.kekumuhawaii.com/moku-o-keawe-hilo).

In addition to their kuleana with the Hilo cohort Kumulā'au and Haunani returned to Maui to continue instruction with their Maui 'ie'ie weaving cohort, which had been interrupted in 2019 due to COVID-19.

HTY ensemble member Emily Wright interacting with audience member – the fish puppet is “eating” a soft fiber coral sculpture.



Entrance to the performance space at the State Art Museum

Under the Blue

The State Foundation on Culture and the Arts partnered with Honolulu Theatre for Youth (HTY) to develop “Under the Blue”, an art installation at the Hawai‘i State Art Museum that brought together visual artists, theatre artists and community members to create an immersive space and sensory friendly performance for young people with developmental differences. It was a journey through the different levels of the ocean that explored various animals and plants found in each of the ocean’s layers.

The walls of the installation were curated and imagined by Solomon Enos. About a thousand museum visitors added millions of tiny dots to the walls over the course of two months, representing the plethora of phytoplankton that lives in the ocean. The coral reef and all the yarn creatures in the installation were made or curated by scientist and artist Michelle Schwengel-Regala.

SFCA and HTY continued their partnership by transforming the immersive experience into a performance into a touring school show from August to November 2023. HTY also toured free performances at selected public libraries on O‘ahu, Hawai‘i Island, Maui, and Kaua‘i in September and October of 2023 with sponsorship from the Friends of the Library of Hawai‘i.

Read more about “Under the Blue” and watch a short video introduction about the production on the SFCA website:

[Under the Blue with HTY](#)

Not All Backpacks Carry the Same Weight

The exhibit was led by international artist and SFCA Artistic Teaching Partner Fatiha Kheddaoui, assisted by Dominique Meyer Gere. 60 backpacks transformed into works of art were displayed, showcasing the creativity and resilience of the young artists.

This was a collaborative effort between RYSE youth and Moanalua High School students from Mr. Kalma's English Honors classes.

The students and youth worked independently, but simultaneously, on the designs and creative implementation of each backpack. Through creativity, we discussed and explored the stigmas of homelessness and its impact on young people,”

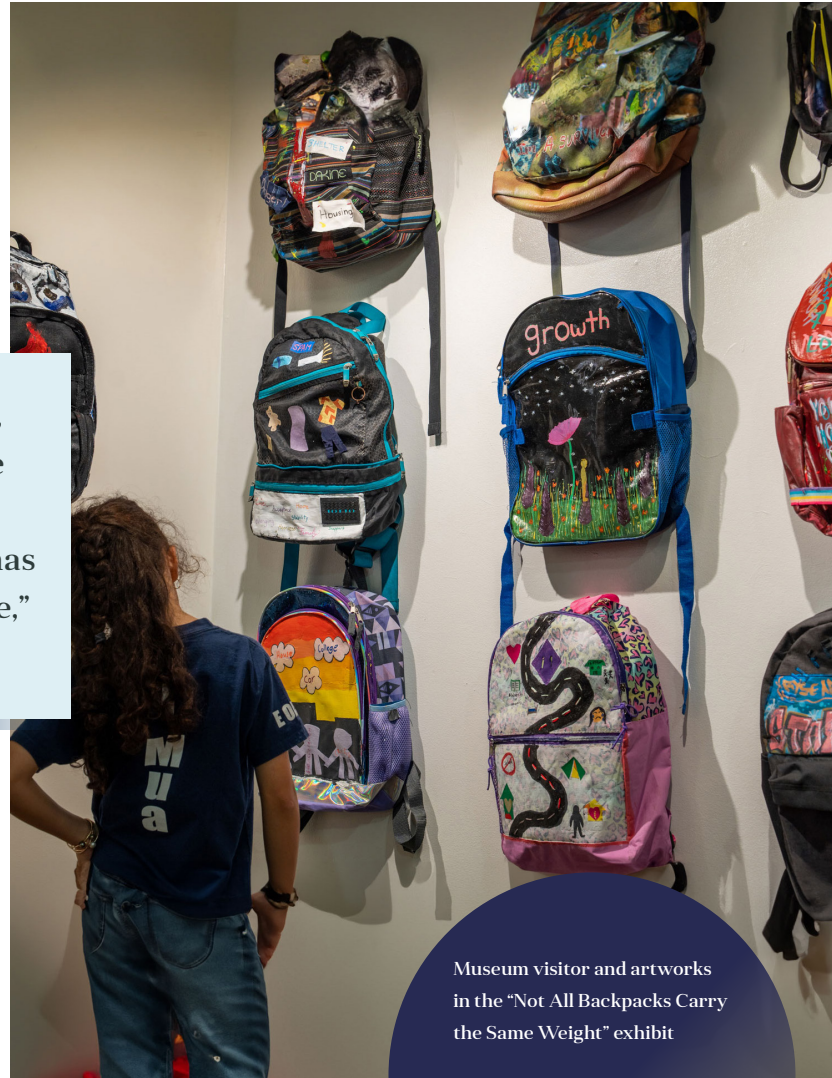
— KHEDDAOUI

“By creating more visibility of our youth in art institutions, we invite people to see them as part of the community.”

Read more about the exhibit on the SFCA website:

sfca.hawaii.gov/ryse-press-release-for-exhibit-not-all-backpacks-carry-the-same-weight.

Residential Youth Services and Empowerment (RYSE) and Moanalua High School created “Not All Backpacks Carry the Same Weight,” an art exhibit featuring backpacks redesigned by homeless youth and Moanalua High School’s English Honors classes.



Museum visitor and artworks in the “Not All Backpacks Carry the Same Weight” exhibit

Museum Without Walls: Arts Education Pilot Programs

In FY2023, the SFCA ran two pilot programs for Museum Without Walls: Arts Education, an SFCA initiative to bring arts education into non-school spaces. The programs took place at The Plaza Kaneohe for senior care residents, and at Adventist Heath Castle hospital for

medical workers and their families. SFCA Artistic Teaching Partners Denise Karabinus and Tamara Moan led visual arts residencies over several weeks. Art making was taught as an opportunity to meditate, reflect, connect, and reduce stress.

Arts integration gets students excited about learning

Moloka'i Storytellers

This year, the SFCA supported a poetry festival on Moloka'i through the SFCA Artists in the Schools program and Kualapu'u Public Conversion Charter School. Young people in fourth, fifth, and sixth grade classes presented their poetry to the community and kupuna shared their stories about growing up on Moloka'i. The festival was run by SFCA Artistic Teaching Partner Laurel Nakani-shi and the Moloka'i Arts Center.

SFCA's Arts Education programs engage participants in the artistic processes of C.P.R.C:

- Creating (making art)
- Performing/Presenting (sharing our art with others)
- Responding (thinking/reflecting about art)
- Connecting (relating ideas and works with context to deepen understanding)

These are the anchors of the National Core Arts Standards, a process that guides educators in providing a unified quality arts education for students pre-K through high school. In 2022, the Hawai'i State Department of Education adopted the National Core Arts Standards with encouragement from the Arts First Partnership (page 24). Learn more about the National Core Arts Standards at [NationalArtsStandards.org](https://nationalartsstandards.org).


¹ National Assembly of State Arts Agencies, Arts Education Provides Skills Critical to 21st century success <https://nasaa-arts.org/communication/arts-education-provides-skills-critical-to-21st-century-success/>



“

“Arts education provides skills vital to 21st-century success: critical thinking, creative problem-solving, collaboration, communication, and information literacy. In a global economy driven by knowledge and ideas, arts education is a necessity. The best-paying jobs require workers with creativity and higher-order thinking and communication skills, and companies are increasingly looking for these qualities in the workers they recruit. In studying the arts, students hone their perceptual, analytic, and interpretive skills while developing creative thinking, communications, and problem-solving abilities. Additionally, 74% of educators say that the risk of job automation is lower in professions that require creative problem-solving skills.”¹

NATIONAL ASSEMBLY OF STATE ARTS AGENCIES, **“ARTS EDUCATION PROVIDES SKILLS CRITICAL TO 21ST CENTURY SUCCESS”**

A young boy with dark hair, wearing a light-colored short-sleeved shirt with a vibrant floral pattern in shades of pink, yellow, and green, is seated and playing a drum set. He is holding a drumstick in his right hand, poised to strike a cymbal. The drum set includes a snare drum, a tom, and a cymbal. The background is a soft-focus outdoor setting with greenery and a microphone stand. A large, semi-transparent red circle is overlaid on the bottom left of the image, containing text.

Honolulu Jazz Music School student performing at the State Art Museum. Honolulu Jazz Music School is an official partner of the museum, offering community access to music education at no cost.



Sumi-e ink paper banners made by Konawaena students during a recent Artists in the Schools residency.

PHOTO CREDIT:
KONAWAENA HIGH SCHOOL | STATE OF HAWAII
DEPARTMENT OF EDUCATION

Arts education engages students in school

Students are more likely to participate in arts and arts integrated classes, and have higher attendance than classes where the arts are absent.¹

“Our students look forward to [Artistic Teaching Partner Ellen Crocker] coming and there are countless times that they have asked when she will be here next and students remember the units even years later...It has also been great to see how some of the lessons are starting to become part of our Modern History of Hawai‘i curriculum.”

— LEIGH NAKAMURA, HEAD SOCIAL STUDIES TEACHER, KONAWAENA HIGH SCHOOL (SOUTH KONA, HAWAII‘I ISLAND)

127 schools participated in an SFCA Artists in the Schools residency program statewide in fiscal year 2023

Arts education helps close achievement gaps for disadvantaged students

Research confirms that students from low-income families, English language learners, and students with special needs all do better in arts-infused schools than in schools that do not have robust arts programming as a meaningful part of the curriculum.²

The SFCA provides various arts education programs and opportunities to State of Hawai‘i Department of Education public and charter schools:

- Artists in the Schools artist residencies for grades K-12, statewide
- Art Bento Museum Education activities at the Hawai‘i State Art Museum for grades 2-6, O‘ahu
- Student exhibitions at the Hawai‘i State Art Museum for grades K-12, statewide
- Poetry Out Loud national poetry recitation competition for grades 9-12, statewide
- Biennium Grants to Organizations for Arts Education for grades pre-K-12, statewide

¹ Arts Education Partnership, Preparing Students for the Next America: The Benefits of an Arts Education, April 2013. https://www.aep-arts.org/wp-content/uploads/Preparing-Students-for-the-Next-America_The-Benefits-of-an-Arts-Education.pdf

² National Endowment for the Arts, The Arts and Achievement in At-Risk Youth: Findings from Four Longitudinal Studies, March 2012. <https://www.arts.gov/sites/default/files/Arts-At-Risk-Youth.pdf>

Artistic Teaching Partners

The SFCA's roster of Artistic Teaching Partners (ATP) provides schools with highly qualified teaching artists. Artistic Teaching Partners stay current with best arts education practices through ongoing training and professional development.

View the SFCA Artistic Teaching Partners Roster on the SFCA website: sfca.hawaii.gov/atp-roster.

Kihei Elementary students on a Waihe'e Coastline field trip.
PHOTO CREDIT: MAGGIE SUTROV



Artworks created by Kihei Elementary School students during an SFCA Artists in the Schools residency with Artistic Teaching Partner Maggie Sutrov.

PHOTO CREDIT: MAGGIE SUTROV

The arts prepare students for success in work

“

“Arts education develops thinking skills and capacities key to success in the 21st century workforce. Arts education equips students to be creative, strengthens problem solving ability, builds collaboration and communication skills, and increases capacity for leadership.”

¹ Arts Education Partnership, Preparing Students for the Next America: The Benefits of an Arts Education, April 2013. https://www.aep-arts.org/wp-content/uploads/Preparing-Students-for-the-Next-America_The-Benefits-of-an-Arts-Education.pdf

Hawai'i State Poet Laureate

The Hawai'i State Poet Laureate Program has concluded its first year of a three-year initiative.

Launched in 2022 by the Hawai'i Council for the Humanities in partnership with the Hawai'i State Foundation on Culture and the Arts, the State Librarian and other community stakeholders, the Hawai'i State Poet Laureate recognizes and honors a Hawai'i poet of exceptional talent and accomplishment. The program is intended to promote and encourage appreciation of poetry and literary life in Hawai'i through events, publications, workshops, and readings featuring local poets. The fellowship awards \$20,000 year and helps activate poetry in communities throughout the state.


“

I aim for my work to contribute to a poetry of healing—a poetry that confronts and speaks the truth of personal, colonial and collective trauma, while also reflecting on how to work through that trauma, how to have hope, and how to grow stronger through connections to 'āina and community. Above all, I hope people may be inspired to write their own poems and stories of 'āina and community, to articulate their own truth, and in doing so, to feel the strength, aloha and sense of connection that has been with them all along.

—BRANDY NĀLANI MCDUGALL, HAWAII STATE POET LAUREATE

In her first year as Hawai'i State Poet Laureate, Brandy Nālani McDougall actively engaged with communities through readings, public appearances, and participation in local events including the 2023 Art at the Capitol, The Vibe at Capitol Modern (Hawai'i State Art Museum), and the Shangri-La Museum of Islamic Art, Culture, and Design.

Learn more about the Hawai'i State Poet Laureate program on the SFCA website: sfca.hawaii.gov/pl



Brandy Nālani McDougall is a Kānaka Maoli author, poet, educator, literary activist, and associate professor at the University of Hawai'i at Mānoa. Her second poetry collection, "Āina Hānau, Birth Land", was published in the summer of 2023.



Art in Public Places Program

The objectives of the Art in Public Places (APP) Program are to:

- Enhance the environmental quality of public buildings and spaces throughout the state for the enjoyment and enrichment of the public
- Cultivate the public's awareness of visual arts in all media, styles, and techniques.
- Contribute to the development and recognition of a professional artistic community.
- Acquire, interpret, preserve, and display works of art expressive of the Hawaiian Islands, the multicultural heritages of its people, and the creative interests of its artists.

"Feather Woman Wailing" ink and pastel on paper, Emily Mellroy. SFCA Art in Public Places Collection. Acquired from the SFCA 2020 Covid Call for Art.

Art in Public Places

Commissioned Works of Art

Filipino Veterans of World War II at Waipahu Public Library

This is a commissioned work of art project set in motion by the 2017 Hawai'i State Legislature through [HB 942, Relating to Filipino veterans](#), appropriating funds for the State Foundation on Culture and the Arts to commission a permanent monument to show Hawai'i's gratitude to Filipino veterans, provide a visual reminder of these Filipino veterans' unique place in American and global history, and to educate the public on the role that minorities played in the outcome of World War II.

This monument honors the veterans of Filipino heritage and the civilian resistance who fought against the Japanese invasion and occupation of the Philippines. Read more about this project on the SFCA website: sfca.hawaii.gov/filipino-veterans-of-wwii-monument-dedicated-at-waipahu-public-library.

An Art Advisory Committee is convened for each building or space selected for a permanent work of art. The AAC participates in every phase of discussion to ensure the work of art is relevant and accessible to the community where it is placed.

ENCUMBERED

- Kapi'olani Community College Culinary Institute of the Pacific. Artist: Cory Taum
- Wahiawā Civic Center. Artist: LeRoy Transfield

DEDICATED

- "Ola I Ka Wai" at Waimea Middle Public Conversion Charter School. Artist: Stuart Nakamura
- "Ride On" at Waianae Intermediate School. Artist: Wayne Zebzda
- "Filipino Veterans of World War II Monument" at Waipahu Public Library. Artist: Kelley Hestir

Read more about the artworks dedicated in FY2023 on the SFCA website:

sfca.hawaii.gov/category/commissioned-works-of-art



Pictured with the maile lei are World War II veterans Art Caleda, Oscar Bangui and Faustino Garcia

"Ride On" at Waianae Intermediate School

Art in Public Places Public Art Collection

The SFCA Art in Public Places Collection has nearly 7,000 works of art, over 68% of which is currently on display statewide in over 500 state government sites including public schools, university campuses, libraries, airports, hospitals, State office buildings, and the Hawai'i State Art Museum. The collection is managed by the SFCA for accountability, accessibility, preservation, and appropriate use. Please see Appendix A, Art in Public Places Program (page 29) for details on FY2023 purchases and gifts.

Art at the Capitol invites the public to visit Capitol building offices and spaces to view and learn more about the SFCA Art in Public Places Collection artworks installed there. This year, 41 legislative offices participated. The April 14, 2023 event featured:

- Invocation by Hawai'i State Poet Laureate Brandy Nālani McDougall
- Self-guided tours
- Short films from the Hawai'i International Film Festival
- H-3 protest footage from Hawai'i Triennial 2022
- Live performances by Kamakawiwo'ole Osorio Band, Ballet Hawai'i, Honolulu Theatre for Youth
- Panel discussion: "Art and Activism" by Hawai'i Contemporary

Prior to the event, staff from the SFCA and the Honolulu Mayor's Office on Culture and the Arts, along with Representative Sonny Ganaden, talked about the Hawai'i State Art Museum, arts in our community, and the Art at the Capitol event on KHNL's HI NOW television program.

In March, SFCA hosted a hands-on art workshop with legislators and legislative staff. SFCA hosts these workshops as an opportunity for legislators to experience the high-quality arts education programs SFCA provides to Hawai'i public and

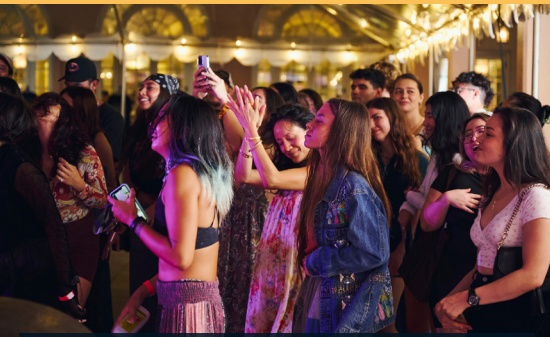


Ballet Hawaii dancers performing during Art at the Capitol.

charter school students and teachers. This year's workshops were led by Representative Sonny Ganaden of House District 30 (an avid printmaker) with the Honolulu Printmakers nonprofit organization.

Native Hawaiian Art

The SFCA supports the acquisition and creation of Native Hawaiian art through a variety of programs including the Art in Public Places Program. For a detailed report relating to expenditures for the curation and presentation of Native Hawaiian art, go to sfca.hawaii.gov/news/sfca-annual-report.



Audience at a State Art Museum event

PHOTO CREDIT: BRANDYN LIU / STATE FOUNDATION ON CULTURE AND THE ARTS



Performers at a Pa'ina Pō alima event at the State Art Museum



Audience and performers at a State Art Museum event

Hawai'i State Art Museum

The State Art Museum is a powerful tool to maximize public art access and promote lifelong learning, and an educational teaching tool for students, teachers, visitors and the public. Supported by the Works of Art Special Fund, the museum is free for everyone and open Monday-Saturday 10 am – 4 pm, with evening hours during special museum events. Learn more about the museum online: CapitolModern.org.

2023 Exhibits

2023 STUDENT ARTWORK EXHIBITS

“The State Foundation on Culture and the Arts, in consultation with the department of education, the University of Hawai'i, private schools, and community art groups, shall establish a program for the recognition and display of student artwork. Student artwork shall mean any work of art made by any student attending any elementary, intermediate, high school, college, or university in the State.” Hawai'i Revised Statutes (HRS) Chapter 9-4

2023 ANNUAL HAWAI'I REGIONAL SCHOLASTIC ART AWARDS EXHIBITION (GRADES 7-12)

March 11 – May 6, 2023. Gold and Silver Key award-winning artworks, selected by a panel of judges from the Hawai'i arts community. Top award winners continue on to the national level competition. Mahalo nui to judges Noah Harders, Carol Ann Carl, Shayne Hasegawa, Vincent Hazen, Bryce Meyers, Saumolia Puapuaga, Tony Su'a, Tehinamai Tafiti, John Taukave, Su'a Sulu'ape Aisea Toetu'u, Misa Tupou, Anthony Watson, and Jordan Wolfe! A virtual tour of the exhibit (and other past exhibits) can be explored on the State Art Museum website:

CapitolModern.org/exhibitions.

2023 YOUNG ARTISTS OF HAWAI'I (GRADES K-7)

May 20 – July 8, 2023 at the State Art Museum and August 2023 – March 2024 at the Hawai'i Convention Center. 2023 theme: “Good Leaders Taking Action: What does it look like when good leaders get others involved to make a positive change?” Presented by the SFCA, the Hawai'i Tourism Authority, and Granicus Pasifika, this program recognizes creative excellence among Hawai'i's K-6 students. A panel of judges selects 96 works for the exhibition. Mahalo nui to 2023 judges Representative Sonny Ganaden, Rosina Potter, and Rachael Kim.

FY2023 State Art Museum Program Highlights

As a part of the SFCA's Art in Public Places Program, the intention of the State Art Museum is to explore creative and dynamic ways to support artists and their diverse art forms. This is accomplished through public programming, museum education, and engagement. We are continuously evolving in becoming even more inclusionary and accessible to the needs of our community, as a welcoming space for creatives to collaborate, share and encourage one another in the arts.

Friends of the State Art Museum Artist Residency: Solomon Enos

Native Hawaiian artist and storyteller Solomon Enos engaged students and community members. Much of Enos' work depicts Polynesian science fiction storytelling of Hawaiian stories.

Under the Blue with the Honolulu Theatre for Youth

The State Foundation on Culture and the Arts partnered with Honolulu Theatre for Youth (HTY) to create an immersive space and sensory friendly performance for young people with developmental differences at the State Art Museum. Read more about Under the Blue on page 10.



Friends of the State Art Museum Artist Residency: Solomon Enos

Solomon Enos live-painting during an event at the State Art Museum

GET INVOLVED

Interested in teaching, performing, or doing a temporary installation at the State Art Museum?

Application forms are available on the Capitol Modern website:
CapitolModern.org/get-involved.

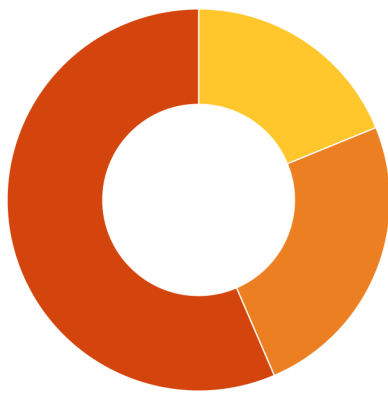
King Kamehameha Celebration Commission

On December 22, 1871, King Kamehameha V proclaimed a national holiday to honor and celebrate his grandfather and the father of the Hawaiian Kingdom. Originally, the people of Hawai'i wanted to mark the legacy of Lot Kapūaiwa (Kamehameha V) on his birthday, December 11. Being the humble chief that he was, he opted to honor his grandfather instead and pushed the holiday as far away from his (Lot's) birthday as possible, hence the arbitrary date of June 11. Thus, June 11, 1872, was the very first Kamehameha Day holiday ever celebrated.



Hawaiian flags held high during a King Kamehameha Celebration Floral Parade.

PHOTO CREDIT: KING KAMEHAMEHA CELEBRATION COMMISSION



- State Foundation on Culture and the Arts
(Art in Public Places Program)
- State General Fund appropriation
- Hawai'i Tourism Authority
(Community Enrichment Program)

\$50,000
(18.8%)

STATE FOUNDATION ON CULTURE AND THE ARTS

ART IN PUBLIC PLACES PROGRAM

\$65,670
(24.7%)

STATE GENERAL FUND APPROPRIATION

\$150,000
(56.5%)

HAWAI'I TOURISM AUTHORITY

COMMUNITY ENRICHMENT PROGRAM

\$265,670

TOTAL BUDGET

2023 King Kamehameha Day Celebration

Sixteen official events were held on Hawai'i Island, Kaua'i, Maui, Moloka'i, and O'ahu from June 3 – June 17, 2023.

Special sections created for each island's newspapers (Hawai'i Tribune Herald, West Hawai'i Today, The Garden Island, and the Honolulu Star-Advertiser)

A list of official events on Hawai'i Island, Kaua'i, Maui, Moloka'i, and O'ahu is posted online at [KamehamehaDay.Hawaii.gov](https://www.kamehamehaday.hawaii.gov).

King Kamehameha Celebration Commission

- Royal Order of Kamehameha I: **Kainoa Daines – Chair**
- ‘Ahahui Ka’ahumanu: **Louise Alina**
- Hale O Nā Ali‘i: **Ian Custino, Vice Chair**
- Daughters & Sons of Hawaiian Warriors, Māmakakaua: **Puake‘ala Mann**
- Daughters of Hawai‘i: **Kehaulani Keana‘aina**
- Association of Hawaiian Civic Clubs: **Shelley Kēhaulani Pe‘a**
- Kamehameha Schools Alumni Association: *Vacant*
- Kapahulu Music Club: **Kimo Keaulana**
- Waimānalo Hawaiian Homestead Association: *Vacant*
- Papakōlea Community Association: *Vacant*
- Island of Hawai‘i: **Desiree Moana Cruz**
- Island of Maui: **Moani Whittle-Wagner**
- Island of Kaua‘i: **Kalei Hoffman**
- Island of Moloka‘i: **Leinā‘ala Lopez**
- Island of Lāna‘i: *Vacant*
- **Amy Hammond, Executive Director**

STAY IN TOUCH

Website: KamehamehaDay.Hawaii.gov

Email: KKCC@hawaii.gov

Telephone: 808.586.0333

Facebook: [@KingKamehamehaCelebration](https://www.facebook.com/KingKamehamehaCelebration)

Instagram: [@KingKamehamehaCelebration](https://www.instagram.com/KingKamehamehaCelebration)



King Kamehameha I statue in Honolulu adorned with lei.
PHOTO CREDIT: KING KAMEHAMEHA CELEBRATION COMMISSION



Pā ū riders from Maui in the King Kamehameha Celebration Floral Parade (2014)
PHOTO CREDIT: KING KAMEHAMEHA CELEBRATION COMMISSION

ARTS FIRST Annual Report

Fiscal Year 2023 (July 1, 2022 – June 30, 2023)

About the ARTS FIRST Partners

In 1999, the Hawai'i State Legislature enacted ACT 80, which called for Hawai'i's major stakeholders in arts education to revise the State's Fine Arts standards and develop a statewide Strategic Plan for Arts Education. In 2001, ACT 306/01 passed into law (SFCA's HRS Chapter 9) formally naming the ARTS FIRST Partners and mandating the implementation of the Strategic Plan.

Current ARTS FIRST Partners include the State of Hawai'i Department of Education; Hawai'i Association of Independent Schools; College of Arts and Humanities - University of Hawai'i-Mānoa; College of Education - University of Hawai'i-Mānoa (UHM COE); Hawai'i State Foundation on Culture and the Arts (SFCA); Hawai'i Arts Alliance; Holualoa Foundation for Arts and Culture (Donkey Mill Art Center); Honolulu Theatre for Youth; Maui Arts & Cultural Center; Molokai Arts Center. Any not-for-profit arts education focused organization in Hawai'i is welcome to attend meetings.

FY2023 Highlights and Accomplishments

On March 3, 2022, the Hawai'i State Board of Education adopted the National Core Arts Standards (NCAS) for grades K-12, effective July 1, 2022, for the Hawai'i State Department of Education (Department) schools and July 1, 2025, for charter schools. The NCAS replaces the Hawaii Content and Performance Standards III for Fine Arts K-12. The Department will initiate a three-year implementation rollout beginning with School Year (SY) 2022-2023, with full implementation of the NCAS in SY 2025-2026. Since the adoption, ARTS FIRST partners have been assisting in the implementation and rollout phase of the standards, which will run through 2025.

Hawai'i Community Foundation, a Hawai'i-based nonprofit organization, hosted an ARTS FIRST retreat in July 2022. The retreat invited new partners and discussed a plan for the next 3 years, including the State of Hawai'i Department of Education (DOE) adoption of the National Core Arts Standards and crafting a public awareness campaign for arts education.

In addition, various organizations within ARTS FIRST supported Professional Development for teachers, teaching artists and community members. Several sessions had a focus on culturally responsive and sustaining teaching methods. Professional Development this year was held online and in person on Maui, the Big Island and O'ahu.

Arts First Partners 2021-2025

Strategic Plan Mission & Vision

MISSION

To collectively advance diverse, equitable and quality arts education in Hawai'i through advocacy and access.

VISION

A vibrant, arts-enriched learning culture in which:



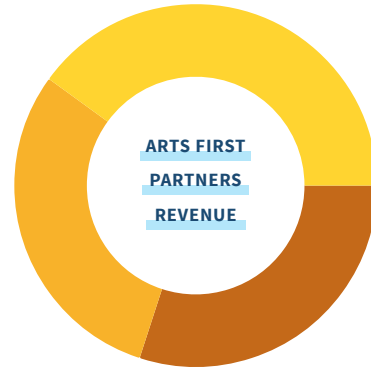
Arts are diverse and inclusive



The Arts are subjects in schools as well as integrated throughout subjects in schools; and



Arts support community, community supports arts.



\$770,630

TOTAL FUNDS

\$483,360
(63%)

STATE & COUNTY FUNDS

\$14,760
(2%)

FEDERAL FUNDS

\$272,510
(35%)

PRIVATE FUNDS

SFCA Financial Summary

DEPARTMENT OF ACCOUNTING & GENERAL SERVICES, STATE OF HAWAII

FISCAL YEAR ENDED JUNE 30, 2023

Revenues

STATE

| | |
|--|-------------------------|
| General Funds Appropriation | \$ 825,454.00 |
| Bernice Pauahi Bishop Museum | \$ 17,500,000.00 |
| Friends of 'Iolani Palace | \$ 2,000,000.00 |
| Works of Art Special Fund (Expenditure Ceiling*) | \$ 5,585,735.00 |
| Works of Art Capital Improvement Project Fund | \$ 33,566.28 |
| SUBTOTAL | \$ 25,944,755.28 |

FEDERAL

| | |
|-----------------------------------|----------------------|
| National Endowment for the Arts | |
| State Partnership Agreement | \$ 750,700.00 |
| SUBTOTAL | \$ 750,700.00 |

PRIVATE CONTRIBUTIONS

| | |
|---|----------------------|
| Carryover from previous year | \$ 124,449.81 |
| Hawai'i Community Foundation Donation | \$ 10,100.00 |
| Private Donation for State Art Museum | \$ 25,510.00 |
| Investment Pool Earnings/pCard Rebate | \$ 1,517.58 |
| SUBTOTAL | \$ 161,577.39 |

Total Revenues \$ 26,857,032.67

*Actual Revenue to the Works of Art Special Fund\$ 6,154,974.88

Expenses

SFCA ADMINISTRATION \$ 523,101.91

| | |
|-----------------|---------------|
| Personnel | \$ 390,197.94 |
| Operating | \$ 132,903.97 |

PROGRAM GRANTS \$ 20,406,595.83

| | |
|---|------------------|
| State | \$ 544,685.00 |
| Bernice Pauahi Bishop Museum | \$ 17,500,000.00 |
| Friends of 'Iolani Palace | \$ 2,000,000.00 |
| Federal – National Endowment for the Arts | \$ 361,910.83 |
| Basic State Plan | \$ 167,974.40 |
| Arts in Education | \$ 46,579.00 |
| Underserved Communities | \$ 107,357.43 |
| Poetry Out Loud | \$ 20,000.00 |
| Folk Arts Partnership | \$ 20,000.00 |

ART IN PUBLIC PLACES PROGRAM \$ 5,441,432.94

| | |
|---|-----------------|
| Commissioned Works of Art | \$ 918,994.74 |
| Relocatable Works of Art | \$ 400,199.40 |
| Acquisitions | \$ 302,068.41 |
| Exhibition Services | \$ 98,130.99 |
| Works of Art Conservation | \$ 263,308.42 |
| Registration | \$ 24,000.00 |
| Art in Public Places Administration | \$ 1,980,618.03 |
| Personnel | \$ 1,395,005.00 |
| Operating | \$ 292,597.08 |
| Special Fund Assessments by Dept. of Budget & Finance | \$ 293,015.95 |
| Hawai'i State Art Museum | \$ 1,448,525.35 |
| Artists in the Schools | \$ 405,787.00 |

PRIVATE CONTRIBUTIONS \$ 83,408.50

| | |
|--------------------------------|--------------|
| Hawai'i State Art Museum | \$ 83,408.50 |
|--------------------------------|--------------|

Total Expenses \$ 26,454,539.18

Excess of Revenue Over Expenses

STATE

| | |
|--|--------------|
| General Fund Lapsed | \$ 10,637.13 |
| General Fund Lapsed due to Restrictions by Administration | \$ 88,225.31 |
| Works of Art Special Fund Reversion | \$200,420.06 |
| Works of Art Capital Improvement Project Fund | \$ 33,566.28 |
| <i>(carryover from previous year, fund established prior to Works of Art Special Fund)</i> | |

FEDERAL

| | |
|---|---------------|
| National Endowment for the Arts Reversion | \$ 111,117.13 |
| Basic State Grant | \$ 111,117.13 |

PRIVATE CONTRIBUTIONS \$ 37,127.58

| | |
|---|--------------|
| Carryover from previous year | \$ 35,610.00 |
| Investment Pool Earnings/pCard Rebate | \$ 1,517.58 |

Total Revenue Over Expenses \$ 481,093.49

APPENDIX A (1/3)

Art in Public Places Program

FY2023 ART IN PUBLIC PLACES COLLECTION PURCHASES AND GIFTS

The APP Program acquires works of art and commissions artists to create works of art for specific locations. These works of art are displayed in over 500 sites statewide.

2 artwork commissions were encumbered this year and 71 artworks from 22 exhibits and venues were purchased. Works of art are purchased through a community process where an Acquisition Award Selection Committee (AASC) is convened to select works of art for purchase from public galleries, studios of master artists, gifts, and other approved sources. The AASC follows selection criteria to recommend artwork to the SFCA Board of Commissioners for approval

to purchase. This year, AASC's visited 23 exhibits on Hawai'i Island, Kaua'i, Maui, and O'ahu, and recommended 100 artworks for purchase (note: the number of nominations and purchases differ as the purchase date of an artwork may be in a different fiscal year than the nomination). To learn more about how exhibit organizers can invite an AASC to an exhibit, please visit the SFCA website: [SFCA.Hawaii.gov/art-in-public-places-program/invite-committee](https://www.sfca.hawaii.gov/art-in-public-places-program/invite-committee).

APPENDIX A (2/3)

Art in Public Places Program (cont.)

ARTISTS OF RELOCATABLE WORKS OF ART (PURCHASED)

Amber Aguirre, Bernice Akamine, Regina Bode, Allyn Bromley, Evelin Caris, Kahi Ching, Julia Cordi, Susanna Cromwell, Solomon Enos, John Fackrell, Bob Freitas, Vilsoni Hereniko, Darius Homayounpour, Julie Houck, Brad Huck, Katya Hutchinson, May Izumi, Sean K.L. Browne, Imaikalani Kalahale, Caren Lobel-Fried, Terry Lopez, Rd Manzano, Christina May Ho, Emily Mclroy, Meleanna Meyer, Tamara Moan, Daniel Moe, Bon Moore, Susan Mori, Rowland Morita, Brandon Ng, Marcia Pasqua, Carrie Phillips Kieser, Herman Pi'ikea Clark, Darold Ramelb, Abigail Romanchak, Hiroko Sakurai, Esther Shimazu, Laura Smith, Clifford Snyder, Keith Tallet, Sarah Taylor Ko, Liz Train, Mark White, Suzanne Wolfe, Kunane Wooton, Lawrence Yager, Maile Yawata, Jonathan Yukio Clark.

GIFTS

Over 15% of the Art in Public Places Collection artworks were gifted to the State of Hawai'i. In FY2023, 0 gifts were received.

DISPLAY

5,194 Relocatable Works of Art in over 500 sites and 309 Commissioned Works of Art were on display across the state at the beginning of FY2023.

The APP Collection online catalog can be accessed via the SFCA website, searchable by artist, title, material and more at sfca.hawaii.gov/art-in-public-places-program

APPENDIX A (3/3)

Art in Public Places Program: Maintenance, APP Contracts

MAINTENANCE

A survey of Commissioned Works of Art was done in FY2023 on Hawai'i Island, Kaua'i, Lāna'i, Maui, and Moloka'i.

ART IN PUBLIC PLACES PROGRAM: FY2023 CONTRACTS

Cory Taum, commissioned work of art, Kapi'olani Community College Culinary Institute of the Pacific, \$50,000

LeRoy Transfield, commissioned work of art, Wahiawā Civic Center, \$150,000

AI Media LLC, public program coordination for the Hawai'i State Art Museum 2022-2023, \$165,200.00

Alii Security Systems, security services for the Hawai'i State Art Museum, \$210,496.80

Bromelkamp Company, database transition support, \$2,400.00

Donald Harvey, maintenance of various Art in Public Places Collection commissioned works of art, \$17,277.37

DTL LLC, social media management service for the Hawai'i State Art Museum, \$69,600.00

Honolulu Biennial Foundation, curatorial work for the Hawai'i State Art Museum, \$522,513.00

Jessica Bodner, creation/installation of an exterior work of art for the University of Hawai'i-West O'ahu, \$300,000.00

Kirk Kurokawa, creation of Governor David Ige's Portrait \$50,000.00

Lighthouse Project, video production services for interpretive work for Hawai'i State Art Museum exhibits and the Art in Public Places Collection, \$218,324.52

Maureen-Michelle K. Chun, creation/installation of an exterior work of art for the Kapiolani Community College Culinary Institute of the Pacific, \$241,000.00

Paul Hayashi, photo documentation of works of art in the Art in Public Places Collection, \$20,104.70

Pioneer Machinery Inc., demolition and disposal services, \$2,575.25

Roberts Hawaii School Bus, transportation services for the Art Bento museum education program for public and charter schools, \$40,319.36

Rosa Lowinger and Associates, conservation of Art in Public Places Collection commissioned works of art located at various State properties on O'ahu, \$271,796.00

Royal Media Network, purchase of cargo van, \$66,800.00

Staffing Solutions of Hawai'i, interpretive guide services at the Hawai'i State Art Museum, \$199,693.92

Tree Concepts Hawaii, landscape maintenance of the Sculpture Garden and Courtyard, \$37,420.00

Wall-To-Wall Studios, Inc., marketing coordination for the Hawai'i State Art Museum, \$88,617.77

APPENDIX B

Grants and Community Program Contracts

SFCA ARTISTS IN THE SCHOOLS

All public and charter schools in the state can apply annually for a PreK-12 arts residency grant. Schools are required to use an artist from the SFCA Artistic Teaching Partners Roster. Most elementary schools do not have arts specialists despite the arts being considered a core subject, so most of the applications serve elementary grades. AITS offers residencies in dance, drama, music, literary arts, and visual arts. In FY2023, 12,850 children and 1,493 adults in 120 schools were reached statewide through Artists in the Schools.

This year, 124 school grant applications were received and reviewed; 120 were awarded grants. Applications are reviewed by a Grant Review Panel of individuals with a deep understanding of arts education and who reside on different islands. Panelists are volunteers and do not receive compensation.

The AITS program follows Hawai'i Administrative Rules, Chapters 3-92 to 3-93 concerning panel and application administration.

The Hawai'i Community Foundation (HCF) has contributed matching funds since 2008 with direct funding to the Artistic Teaching Partner 501(c)(3) organizations that are working with the selected AITS schools.

Artists in the Schools Residencies

Zachary-Jordan Angeles, \$4,798

Fatiha Curran, \$2,118

Bonnie Sol Hahn, \$9,603

Fatiha K. Curran, \$1,059

Kean Arts, \$10,500

Lai Ue Lui, \$2,495

Monica Garrett, \$2,856

Marcia Pasqua, \$3,750

Jill Weiner, \$15,978



Arts Education Contracts

Donna K. Guhde, Professional Development for Teachers, \$12,070

Honolulu Theatre for Youth, Professional Development for Teachers, \$23,000

Honolulu Theatre for Youth, Teaching Artist Institute, \$45,000

Impel Training, Professional Development for Teachers, \$22,979

Maui Arts and Cultural Center, Professional Development for Teachers and Teaching Artists, \$23,000

APPENDIX B

Grants and Community Projects

Folk and Traditional Arts

NATIONAL ORGANIZATION FOR TRADITIONAL ARTISTS EXCHANGE (NOTAE) Folk and

Traditional Arts Program Support, \$40,000.00

Learn more about the program on the SFCA website:

[SFCA.Hawaii.gov/FTA](https://www.sfca.hawaii.gov/FTA)

Culture Contracts

Bishop Museum, operations support and upgrades, \$17,500,000.00

Design Asylum, FY2022 Annual Report design and printing, \$7,514.43

Friends of ‘Iolani Palace, maintenance, repairs, and personnel support, \$2,000,000.00

University of Hawai‘i, Statewide Presenting and Touring - Statewide Cultural Extension Program (SCEP), \$75,000.00

Biennium Grants

The SFCA provides public funds to Hawai‘i nonprofit 501(c)3 arts and culture organizations through Biennium Grants to support projects designed to promote, perpetuate, and preserve culture and the arts in Hawai‘i. Funding categories are Presenting and Performing Arts, Heritage and Preservation, Arts Education, and Community Arts. Grants are funded in the amounts of \$5,000, \$10,000, and \$15,000. Organizations are located statewide, and many include Neighbor Islands in their program outreach. In FY2023, 86% of the funded projects directly supported Native Hawaiian artists.

Grant Review Panels consisting of professionals with backgrounds in the arts and culture sector review and score submitted applications based on their proposed activities (50%), qualifications (25%), and the need, benefit, impact, and good use of public funds (25%). Panelists are volunteers and do not receive compensation.

The Biennium Grants Program follows Hawai‘i Chapters 3-92 and 3-93 HRS concerning panel and application administration, including Chapter 9-11 for applicant eligibility purposes.

Hawai‘i Island

Aloha Performing Arts Company dba

Aloha Theatre, Aloha Theatre Youth Camps, \$10,000

Hawaii Forest Institute, 2022 Hawai‘i’s

Woodshow, Na Lā‘au o Hawai‘i (Hawai‘i Island, Maui, O‘ahu), \$10,000

Hilo Education Arts Repertory Theatre

Company (HEART), I HEART Summer - A Tuition-Free Performing Arts Summer Camp, \$15,000

Holualoa Foundation for Arts & Culture

dba Donkey Mill Art Center, Donkey Mill Art Center Exhibition Program 2022-2023, \$15,000

Kamuela Philharmonic Orchestra

Society, Community Orchestral Concerts, \$15,000

Prince Dance Company, Dancing

Galaxies Interactive Dance Education in Schools, \$15,000

The Friends of the Palace Theater,

Celebration of Hawaiian Music Series 2023, \$15,000

APPENDIX B

Biennium Grants

Lana'i

Lanai Arts and Culture Center, Let's Art Together!, \$15,000

Maui

Hana Arts, Strengthening the East Maui Community through Art, \$15,000

Hui Noeau, Enhancing Lives on Maui through Visual Arts Education (Lana'i, Maui), \$15,000

Lahaina Arts Guild, Lahaina Arts Guild PaintOuts & Summer Camps Project, \$15,000

Maui Academy of Performing Arts, Academy Program, \$15,000

Maui Arts & Cultural Center, MACC Presents 2022-2023: Selected Works, \$15,000

Maui Pops Orchestra, Inc., Maui Pops Orchestra 2022/2023 Concert Season, \$15,000

O'ahu

Ballet Hawaii, Ballet Hawaii's Coming-Out-of-Covid Season 23-24, \$15,000

Hawai'i Council for the Humanities, Hawai'i History Day 2023, \$15,000

Hawaii Craftsmen, Programs for Working Artists and Craftsmen, \$10,000

Hawaii Handweavers' Hui, Ikat Weaving (Hawai'i Island, O'ahu), \$5,000

Hawaii Institute for Music Enrichment and Learning Experiences, Inc., Hawaiian Steel Guitar Festivals and Showcases (Hawai'i Island, Kaua'i, Maui, O'ahu), \$15,000

Hawaii Performing Arts Company, Ltd. d.b.a. Manoa Valley Theatre, Production Support of MVT's 2022-23 Theatre Season, \$15,000

Hawaii Theatre Center, pARTners for the Arts 2022 - 2023, \$15,000

Hawaii Youth Symphony Association, Make Music A Right for Hawaii's Youth (Moloka'i, O'ahu), \$15,000

Honolulu Theatre for Youth, HTY's THE HI WAY 2022-23 Season (Hawai'i Island, Kaua'i, Lana'i, Maui, Moloka'i, O'ahu), \$15,000

Mana Maoli, Mana Mele Project: Strategic Planning & Implementation (Hawai'i Island, Kaua'i, O'ahu), \$15,000

Manoa Heritage Center, Cultural Resilience through Aina-Based Programs, \$15,000

Moanalua Gardens Foundation, Inc., 46th Annual Prince Lot Hula Festival, \$1,500

Sounding Joy Music Therapy, Inc., Music for Lifelong Resilience: Engaging Older Adults through Music Therapy (Hawai'i Island, Maui, O'ahu), \$15,000

The Friends of Iolani Palace, Featherwork Collection - Conservation and Preservation, \$10,000

Windward Choral Society, Hawaii Premier of Jubilate Deo by Dan Forrest, \$15,000

YOUNG OF HEART WORKSHOP dba Pu'uhonua Society, Keanahala: A Place for Hala, \$15,000

APPENDIX C

Schools Served

This list includes schools served by SFCA arts education programs (Artists in the Schools, Poetry Out Loud, and Art Bento) as well as community programs supported by SFCA funding (Biennium Grants), and schools that participated in student art competitions and exhibitions at the State Art Museum.

Hawai'i Island

SCHOOL DISTRICT: HAWAI'I

| | | |
|---|--|--|
| Ka 'Umeke Kā'eo PCS | Ka'ū High & Pāhala Elementary | Community PCS |
| Kanu O Ka 'Āina PCS | Kamehameha Schools - Hawai'i Island | Mālamalama Waldorf* |
| Connections PCS | Ke Ana La'ahana PCS | Pa'auilo Elementary and Intermediate |
| Ernest Bowen DeSilva Elementary | Ke Kula 'o 'Ehunuikaimalino | Parker School* |
| Ha'aheo Elementary | Ke Kula 'o Nāwahīokalani'ōpu'u Iki Lab PCS | Prince Jonah Kuhio Kalaniana'ole Elementary & Intermediate |
| Hawai'i Preparatory Academy* | Kea'au Elementary | St Joseph High School* |
| Hawaii Academy of Arts and Sciences PCS | Kea'au High | The Volcano of Arts and Sciences Community PCS |
| Hawai'i Technology Academy, Kona PCS | Kealakehe Elementary | Waiākea Elementary |
| Hilo High | Kealakehe High | Waiākea High School |
| Hilo Intermediate | Kealakehe Intermediate | Waiākea Intermediate |
| Hilo Union Elementary | Keonepoko Elementary | Waikoloa Elementary and Middle |
| Holualoa Elementary | Keonepoko Elementary | Waimea Elementary |
| Hōnaunau Elementary | Konawaena Elementary | Waimea Parker Ranch Elementary |
| Honoka'a High | Konawaena High | |
| Ho'okena Elementary | Kua O Ka Lā PCS | |
| Innovations PCS | Laupāhoehoe Elementary and High School | |

Kaua'i

SCHOOL DISTRICT: KAUA'I

| | | |
|--|---|--|
| Hanalei Elementary | Kilauea Elementary | Kapa'a High School |
| Hawai'i Technology Academy Public Charter School Kauai | Waimea Middle | Kapa'a Middle School |
| Hawai'i Technology Academy, Kaua'i PCS | Hawai'i Technology Academy - Lihue Campus | Kawaikini New Century PCS |
| Kanuikapono PCS | Hawai'i Technology Academy PCS - Kauai Campus | Kula Aupuni Niihau A Kahelelani Aloha (KANAKA) PCS |
| Ke Kula Niihau o Kekaha Learning Center | Island School* | Kalaheo Elementary |

APPENDIX C

Schools Served

Lana‘i

SCHOOL DISTRICT: MAUI

Lāna‘i High & Elementary

Moloka‘i

SCHOOL DISTRICT: MAUI

Kaunakakai Elementary

Kilohana Elementary

Kualapu‘u PCS

Maunaloa Elementary

Moloka‘i High

Maui

SCHOOL DISTRICT: MAUI

Hā‘iiku Elementary

Hāna High and Elementary

Hāna Middle

Hawai‘i Technology Academy, Maui PCS

Henry Perrine Baldwin High

Iao Intermediate

Kamali‘i Elementary

Kihei PCS

Kihei Elementary

King Kamehameha III Elementary

King Kekaulike High

Kula Elementary

Lihikai Elementary

Lokelani Intermediate

Makawao Elementary

Maui High School

Maui Preparatory Academy*

Maui Waena Intermediate

Pa‘ia Elementary

Pōmaika‘i Elementary

Princess Nāhi‘ena‘ena Elementary

Pukalani Elementary

Pu‘u Kukui Elementary

Sacred Hearts School Lahaina*

Seabury Hall School*

Waihe‘e Elementary

Wailuku Elementary

O‘ahu

SCHOOL DISTRICT: CENTRAL O‘AHU

‘Aiea Intermediate

Āliamanu Elementary

Daniel K. Inouye Elementary

Hale‘iwa Elementary

Hanalani Schools*

Helemano Elementary School

Kamalani Academy PCS

Lanakila Elementary

Leilehua High School

Linapuni Elementary

Mākaha Elementary

Makakilo Elementary

Makalapa Elementary

Malama Honua Public Charter

Manoa Elementary

Maunawili Elementary

Mayor Joseph J. Fern Elementary

Mililani High School

Mililani Mauka Elementary

Mililani Middle School

Mililani Uka Elementary

Moanalua Middle

Nānākuli Elementary

Noelani Elementary

Nu‘uanu Elementary

Pālolo Elementary

President Thomas Jefferson Elementary

Prince Jonah Kuhio Elementary

Princess Victoria Kaiulani Elementary

Red Hill Elementary

APPENDIX C

Schools Served

O‘ahu

SCHOOL DISTRICT: CENTRAL O‘AHU (CONTINUED)

| | | |
|---------------------------------------|------------------------------------|--------------------|
| Robert Louis Stevenson Middle | Waiahole Elementary | Waiiau Elementary |
| Salt Lake Elementary | Waialua Elementary | Waikele Elementary |
| SEEQS PCS | Waialua High & Intermediate School | Waikīkī Elementary |
| Sergeant Samuel K. Solomon Elementary | Wai‘anae Elementary | |

O‘ahu

SCHOOL DISTRICT: HONOLULU

| | | |
|--|--|---------------------------------------|
| ‘Iolani School* | Kalihi Elementary | Princess Miriam K Likelike Elementary |
| Ala Wai Elementary | Kamehameha Schools Kapālama* | Punahou School* |
| Damian Memorial School* | Kamiloiki Elementary | Queen Ka‘ahumanu Elementary |
| Governor Wallace R. Farrington High School | Kula Kaiapuni ‘O Ānuenue Hawaiian Language Immersion | Robert Louis Stevenson Middle School |
| Haha‘ione Elementary | La Pietra Hawaii School for Girls* | Sacred Hearts Academy* |
| Hālau Kū Māna PCS | Maryknoll Grade School | Saint Louis School* |
| Hanahau‘oli School* | Maryknoll High School | St Andrew’s Schools |
| Hawai‘i Baptist Academy* | Mayor John H. Wilson Elementary | University Laboratory School |
| Hawaii Baptist Academy Middle School* | Mid-Pacific Institute* | Voyager PCS |
| Hawaii School for the Deaf and the Blind | Moanalua High | Voyager PCS |
| Henry J. Kaiser High School | Niu Valley Middle School | Wai‘alae Elementary PCS |
| Hōkūlani Elementary | Pālolo Elementary | Waialae PCS |
| Kāhala Elementary | Pauoa Elementary | Washington Middle School |
| Kaimuki High | President Theodore Roosevelt High School | William P. Jarrett Middle |
| Kaimuki Middle | President William McKinley High | |
| Kalani High School | Prince David Kawanakoa Middle School | |

APPENDIX C

Schools Served

O'ahu

SCHOOL DISTRICT: LEEWARD O'AHU

| | | |
|--|-----------------------------|------------------------------|
| Hawai'i Technology Academy PCS - O'ahu | Ka Waihona o Ka Na'auao PCS | Pearlridge Elementary School |
| Highlands Intermediate School | Kamaile Academy PCS | Wai'anae High School |
| Island Pacific Academy* | Kapolei High School | |
| James Campbell High | Pearl City High | |

O'ahu

SCHOOL DISTRICT: WINDWARD O'AHU

| | | |
|---------------------------|----------------------------------|-------------------------|
| 'Aikahi Elementary | Ka'a'awa Elementary | Le Jardin Academy* |
| Assets High School | Ka'elepulu Elementary | Mālama Honua PCS |
| Blanche Pope Elementary | Kalaheo High School | Mauka Lani Elementary |
| Enchanted Lake Elementary | Kaneohe Elementary | Olomana School |
| Hakipu'u Academy PCS | Ka'ōhao PCS | Sunset Beach Elementary |
| He'eia Elementary | Ke Kula 'O Samuel M. Kamakau PCS | |
| James B Castle High | King Liholiho Elementary | |

Statewide

Hawai'i State Distance Learning Program

PCS = Public Charter School

*Non-Department of Education Schools

Updates and Highlights from FY2023



View of the “Hānau Hou Ka Hula Ki'i” exhibit at the Downtown Art Center
PHOTO CREDIT: DOWNTOWN ART CENTER

Kumu Hula Aulii Mitchell: “Hānau Hou Ka Hula Ki i” exhibit

Kumu Hula Aulii Mitchell curated an exhibition of hula ki'i, or Hawaiian puppetry, in the “Hānau Hou Ka Hula Ki'i, Rebirthing Hula Ki'i in the 21st Century” exhibit at the Downtown Art Center in Honolulu, July 10-30, 2022. Mitchell received an SFCA Folk and Traditional Arts Apprentice Mentoring grant for hula ki'i in 2020. With that grant, apprentices Meleanna Meyer and Ka'ai'ohelo MacAfee learned to carve the ki'i, make the kapa attire, and learn the mo'olelo to perform with the ki'i.

Kapa maker Roen Hufford honored by National Endowment for the Arts as National Heritage Fellow

Roen Hufford, Kapa Maker from Waimea, Hawai'i, has been honored as one of the [2023 National Endowment for the Arts \(NEA\) National Heritage Fellows](#). Hufford carries on the labor-intensive traditional art of ka hana kapa (making barkcloth) with designs inspired by the richness of her Hawaiian environment and is a leading figure in the reclaiming of this nearly lost art. Hufford cultivates hundreds of wauke trees for making kapa on her families Hawaiian Homelands farm.

The SFCA Art in Public Places Collection currently has six kapa pieces made by Hufford. Three are on display in the “Accession: recent additions to the Art in Public Places Collection” exhibit at the State Art Museum, and three have been installed for display in the Department of Hawaiian Homelands office in Kapolei.



Five SFCA grantees featured in Bishop Museum’s “Ola Ka No’eau: Excellence in Hawaiian Artistry

The Bishop Museum, partnered with the PA'I Foundation's Maoli Arts Movement initiative, presented “Ola Ka No’eau: Excellence in Hawaiian Artistry” March 11 – October 15, 2023. This exhibition explored the genealogy of Hawaiian artistry, particularly through generational transmission of knowledge. Featured artists included past SFCA Folk and Traditional Arts grantees ‘Umi Kai, Kunane Wooton, Paulette Kahalepuna, Mary Louise Kekuewa, and Kawika Lum-Nelmida. Additionally, artists Roen Hufford, Marie McDonald, Imaikalani Kalahahele, Cory Taum, and Kunane Wooton have artworks in the SFCA Art in Public Places Collection.



View of the “Ola Ka No'eau” exhibit at Bishop Museum
PHOTO CREDIT: BISHOP MUSEUM

SFCA Staff

July 1, 2022 – June 30, 2023

Department of Accounting and General Services

Keith A. Regan, Comptroller

Meoh-Leng Silliman, Deputy Comptroller

State Foundation on Culture and the Arts

ADMINISTRATION

Karen Ewald, Acting/Interim Executive Director

Allison Wong, Executive Director

Rhiannon Keene, Secretary

SUPPORT SERVICES

Lorelin Bartolome-Castillo, Account Clerk

Jesame Garcia, Account Clerk

Mamiko K. Carroll, Information Specialist

Melba B. Marcos, Accountant

Zoe Abrams, Administrative Services Assistant

DESIGNATED PROGRAMS

Logan Espiritu, Arts Program Specialist

Brittany Rakowitz, Arts Program Specialist

Danica “Nikki” Rosengren, Arts Program Specialist

ART IN PUBLIC PLACES

Karen Ewald, Director, Hawai‘i State Art Museum and Art in Public Places Program

Nathan Balcombe, Exhibit Specialist

Elizabeth Baxter, Curator

Kathleen Bejado, Registrar

Derek Erwin, Conservation Coordinator

José De Jesus González, Exhibit Specialist

K. Teig Grennan, Senior Exhibit Specialist

Kamakani Konia, Project Manager

Shirley Lam, Museum Education Coordinator

Peter Powlison, Exhibit Specialist

Alexandra Skees, Project Manager

Scott M. Young, Visitor Services Manager

(vacant) .25 FTE Office Assistant III

FY2021-2022 ANNUAL REPORT

Mamiko K. Carroll, Editor

aio Digital, Designer

Obun Hawaii, Printer

PHOTO CREDITS

All photos copyright State Foundation on Culture and the Arts unless otherwise noted.



HAWAII
STATE FOUNDATION on
CULTURE and the ARTS

STATE OF HAWAII, DEPARTMENT OF ACCOUNTING
AND GENERAL SERVICES

Hawaii State Foundation on Culture and the Arts

250 South Hotel St, Second Floor
Honolulu HI 96813

Telephone: (808) 586-0300 | Fax: (808) 586-0308

Email: HawaiiSFCA@hawaii.gov

Website: www.sfca.hawaii.gov

Facebook: [@hawaiisfca](https://www.facebook.com/hawaiisfca)

Instagram: [@hawaii_sfca](https://www.instagram.com/hawaii_sfca)

Twitter: [@hawaii_sfca](https://twitter.com/hawaii_sfca)

SUBSCRIBE TO OUR MONTHLY EMAIL NEWSLETTER:

www.sfca.hawaii.gov/newsletter