

STATE FOUNDATION ON CULTURE AND THE ARTS
General Board Committee Meeting Agenda
Friday, August 22, 2025
2:30 pm

Physical Meeting Location:
4444 Rice Street, Suite 200, Lihue, Hawaii
Office of Economic Development

Remote Meeting Location:
Video Conference via Zoom

<https://us06web.zoom.us/j/83243834191?pwd=uWjLGvg2gpAZ6doq4Hhwr0HOcvlxxV.1>

Meeting ID: 832 4383 4191
Passcode: 818429

Dial by Location:
+1 206 337 9723 US (Seattle) or +1 213 338 8477 US (Los Angeles)
Meeting ID: 832 4383 4191
Passcode: 818429

The meeting will be held using interactive conference technology under Section 92-3.7, Hawaii Revised Statutes (“HRS”). Commissioners, staff, testifiers, and the public can choose to participate in person or online via Zoom. The public may also view the live meeting via its Zoom link at

<https://us06web.zoom.us/j/83243834191?pwd=uWjLGvg2gpAZ6doq4Hhwr0HOcvlxxV.1>

If you are having difficulty connecting to the meeting, please contact Rhiannon Keene at (808) 586-0300.

To Provide Written Testimony

We encourage interested persons to submit written testimony in advance of the meeting, which will be distributed to Commissioners prior to the meeting and allow a timely review. Please submit written testimony via email to rhiannon.mk.keene@hawaii.gov.

Written testimonies can also be mailed to:
Rhiannon M.K. Keene
Secretary
State Foundation on Culture and the Arts
250 South Hotel Street, 2nd Floor
Honolulu, Hawai‘i 96813

Written testimonies may be posted upon the State Foundation on Culture and the Arts meeting website. As a precaution, please be mindful of any personal information that may be contained in your testimony prior to submitting it unless you intend for it to be shared. Late written testimony will be retained as part of the record and distributed to Commissioners as soon as practicable, but we cannot ensure that the Commissioners will receive it in sufficient time to review, prior to decision-making.

To Provide In-Person Oral Testimony

Attend in-person at:
4444 Rice Street, Suite 200, Lihue, Hawaii

If you require special assistance or auxiliary aids and/or services to participate in the subject public meeting, please contact Rhiannon Keene, Secretary for the State Foundation on Culture and the Arts, at rhiannon.mk.keene@hawaii.gov or (808)586-0300 as soon as possible. Requests made as early as possible have a greater likelihood of being fulfilled. Upon request, this notice is available in alternate/accessibile formats.

To Provide Testimony by Telephone

Individuals interested in signing up to provide oral testimony at the meeting may submit their name, e-mail address, and telephone number to rhiannon.mk.keene@hawaii.gov. On the day of the meeting at the start of the agenda item you wish to testify on, dial the above listed telephone number (Zoom); input the meeting ID: 832 4383 4191 and the passcode: 818429, and follow the prompts.

To Provide Video/Zoom Testimony

Please send your request in a timely manner to rhiannon.mk.keene@hawaii.gov with your name, email address, telephone number, and agenda item you wish to testify on. Once your request has been received, you will receive a confirmation email with pertinent information. You may testify without signing up in advance.

AGENDA

1. Call to Order
2. Roll Call and Determination of Quorum
3. Approval of the Agenda
4. Approval of July 18, 2025 Meeting Minutes
5. Public Testimony on Agendized Items

Public testimony on any item relevant to this agenda may be taken at this time, or a testifier may wait to testify when the agenda item is called for in discussion. Pursuant to Section 92-3, HRS, the Chair of the Commission has the authority to impose reasonable conditions to ensure an orderly and efficient meeting. Testimony presented during the meeting will be limited to three minutes each. Agenda items may be taken out of order.

6. **Presentation by Sabra Kauka, Culture Grant Recipient**
7. **Items for Discussion, Consideration, and Action**
 - a. **Executive Director's Report**
 - i. Progress on Assessment of the Art in Public Places Collection
 - ii. Federal and State Funding Update
 - b. **Approval of Gift/Purchase Recommendations for the Art in Public Places Collection**
 - c. **Approval of the Visitation Schedule for Recommendations for Art Acquisition Selection Committees**
 - d. **Approval of the 2025-2029 Strategic Plan**
8. Announcements
9. Adjournment

In the event that audiovisual communication cannot be maintained by all participating Commissioners and quorum is lost, the meeting will automatically be recessed for 30 minutes, during which time an attempt to restore audiovisual communication will be made. If such attempt to restore is unsuccessful within said 30 minutes, all board members, members of the public, staff and other interested individuals shall log on again to the Zoom link on this Notice, whereby audio communication will be established for all participants and the meeting will continue. If reconvening the meeting is not possible because audio and visual communication cannot be re-established, the meeting will be terminated.

If you require special assistance or auxiliary aids and/or services to participate in the subject public meeting, please contact Rhiannon Keene, Secretary for the State Foundation on Culture and the Arts, at rhiannon.mk.keene@hawaii.gov or (808)586-0300 as soon as possible. Requests made as early as possible have a greater likelihood of being fulfilled. Upon request, this notice is available in alternate/accessibile formats.

STATE FOUNDATION ON CULTURE AND THE ARTS
General Board Committee Meeting*
250 South Hotel Street, Honolulu, Hawai'i 96813
Physical Meeting Location: Multipurpose Resource Room, First Floor
Remote Meeting Location: Video Conference or Telephone

Friday, July 18, 2025 at 11:00am

MINUTES

Members Present

Konrad Ng, Chairperson, Janet Sato, Maui, Randall Fujiki, At-Large; Sean Connelly, At-Large; Michael Marshall, At-Large; Susana Browne, At-Large; Marcia Roberts-Deutsch, At-Large; Randall Francisco, Kauai.

Member Absent

Jill Kuramoto, At-Large.

SFCA Staff Present

Karen Ewald, Executive Director; Rhiannon Keene, Administrative Assistant, Melly Wilson, Administrative Services Assistant, Seema Sueko-Low, Accountant, Elizabeth Baxter, Curator, Brittany Rakowitz, Community Arts Coordinator, Kathleen Bejado, Registrar, Kamakani Konia, Arts Program Manager.

Others Present

Alyssa-Marie, Department of Attorney, Representative Jeanne Kapela, Senator Chris Lee, Ryan Kagimoto, Aly Ishikuni, Dante luna-dealva, Ruby Jordan, Alina Katase, Project Manager from Japanese Cultural Center.

1. Call to Order

Chairperson Konrad Ng called the meeting to order at 11:02 a.m.

2. Roll Call and Determination of Quorum

Chairperson Konrad Ng called the determination of quorum for the Executive Director to lead. All Commissioners were present, except for Jill Kuramoto.

3. Approval of the Agenda

A motion to approve the agenda was made by Janet Sato and seconded by Randall Fujiki. The motion to approve the agenda was approved unanimously.

4. Approval of Minutes of the Previous Meeting held on May 21, 2025

A motion to approve the Minutes of the last General Board committee meeting held on May 21, 2025, was made by Janet Sato and seconded by Susana Browne. The motion to approve the minutes was approved unanimously.

5. Public Testimony on Agendized Items

Chairperson Konrad Ng called for any public testimony. Alina Katasse presented her written testimony to the full board that was received via email on July 17, 2025.

6. Items for Discussion, Consideration, and Action

6.a. Executive Director's Report

Karen Ewald shared the State Foundation on Culture and the Arts received the next round of partnership agreements from the National Endowment for the, that she attended a Kakaako Artist Town Hall meeting which was organized by Councilmember Tyler Dos Santos Tam and reported on the progress of the Permitted Interaction Group on the clarification of the collection.

General Board meeting

July 18, 2025

Page 2

6.b. State Foundation on Culture and the Arts Strategic Plan Update

Karen Ewald presented to the full board the need to approve the 2025-2029 plan by the August 22 General Meeting. Susana Browne encouraged the board to provide feedback to the Executive Director before the meeting on August 22 so that it could be considered for final input.

6.c. Approval of the State Foundation on Culture and the Arts Draft Budget for FY26

Karen Ewald presented to the full board the request for approval of the FY26 Draft budget with further approval for the Executive Director to make adjustments as necessary. A motion to approve was made by Randall Fujiki and seconded by Marcia Roberts-Duetsch. The motion passed unanimously.

6.d. Approval of Gift/Recommendations for the Art in Public Places Collection

Elizabeth Baxter presented five recommendations from the Kahilu Theatre, "E Ola Ke Kahua O Ka Hana Kapa," "curated exhibition (November 14, 2024 – January 5, 2025) AASC VACS: Sherm Warner, Margo Ray, Meidor Hu, Mary Begier, Fia Mattice, Kaori Ukaji (observing only) SFCA: Eli Baxter.

1. TAKASHIMA, Verna Apio. 6026-25 "Kapa Papale"
textile/kapa, natural dyes, acrylic paint, 2024, 8.25 x 13 x 13"
\$2,100.00
2. TANAHY, Dalani. 6027-25 "Layover Quilt"
Hawaiian kapa, fabric, quilt batting, 2011, 55.5 x 41.5"
\$6,500.00
3. MILELZCIK, Mary. 6028-25. "Pohoiki 25"
felted kapa and hanji, with mulberry paper and natural dyes, 2024, 50 x 26"
\$1,500.00
4. RODONDI, Lisa Chun. 6029-25 "Upper Road to Waimea"
Kapa bojagi, 2024, 11.5 x 16.75"
\$930.00
5. WATSON, Susi. 6030-25. "Kauhale: Foundations of Tradition"
kapa mounted on monkeypod boxes, 2024, overall: 9 pieces x 7" x 7" each
\$2,500.00

TOTAL: \$13,530.00

A motion to recommend the five pieces from the Kahilu Theatre, "E Ola Ke Kahua O Ka Hana Kapa" was made by Janet Sato and seconded by Marcia Roberts-Deutsch. The motion was approved unanimously.

University of Hawai'i at Hilo, "2024 Pacific States Biennial North American Juried Print Exhibition," juried exhibition (November 1, 2024 - December 30, 2024) AASC VACS: Hiroki Morinoue, Fia Mattice, Codie King, Mary Begier SFCA: Eli Baxter.

1. CRAIG, Blair. 6031-25 "UNEARTH"
ultra-violet screen print, 2022, 29.5 x 22.5"
\$350.00

General Board meeting
July 18, 2025

2. HONDA, Tiana. 6032-25. "upheaval
watercolor screen print and photolithography, 2022, 30 x 22.5"
\$595.00

3. MCMILLAN, Stephen. 6033-25 "Ocean Rocks"
4 plate aquatint etching, 2024, 8 x 10"
\$300.00

4. MERRILL, Emmett. 6034-25. "Dionysus"
lithograph, 2023, 30.25 x 22.25"
\$500.00

TOTAL: \$1,745.00

A motion to recommend the four pieces from the University of Hawai'i at Hilo, "2024 Pacific States Biennial North American Juried Print Exhibition," was made by Michael Marshall and seconded by Janet Sato. The motion was approved unanimously.

Viewpoints Gallery, "Celebration of Hawai'i 2025 - 20th Annual Invitational," curated exhibition (February 16, 2025 - April 30, 2025) AASC VACS: Paul Janes-Brown, Michael Takemoto SFCA COMM: Susana Browne, Jan Sato SFCA: Eli Baxter.

1. KRALIK, Brandon. 6035-25. "Lahaina Twilight"
oil on canvas, 2025, 40" x 60" x 1.5"
\$24,000.00

2. VOCI, Peter. 6036 -25 "Na 'Auao"
mango wood, 2025, 18" x 43" x 7"
\$18,000.00

3. ADAMS, Husa. 6037-25. "Divine Alchemy II"
encaustic mixed media, 2024. 48" x 9.5" x 1.5"
\$2,800.00

TOTAL: \$44,800.00

A motion to recommend the three pieces from the Viewpoints Gallery, "Celebration of Hawai'i 2025 - 20th Annual Invitational," was made by Janet Sato and seconded by Susana Browne. The motion was approved unanimously.

The Art Gallery, University of Hawai'i at Manoa, "Mud, Myth, and Memory - Masters of Fine Arts Thesis Exhibition," curated exhibition (March 2, 2025 - March 31) AASC VACS: Wendy Kawabata, Gaye Chan, Emily McIlroy SFCA Eli Baxter, Kamakani Konia.

1. SAKURAI, Hiroko. 6038-25 "Invisible Landscapes #2: Mind-scape and Mimic-scape"
repurposed five panel folding screen, paper, ink, dye, mineral pigment, gold leaf paper and fabric, 2025, overall: 24 x 60 (variable)
each panel: 5 panels, 65.5 x 23.75 x .75 each"
General Board meeting
July 18, 2025
Page 4

\$12,000.00

TOTAL: \$12,000.00

A motion to recommend the one piece from the Art Gallery, University of Hawai'i at Manoa, "Mud, Myth, and Memory - Masters of Fine Arts Thesis Exhibition," was made by Marcia Roberts-Deutsch and seconded by Susana Browne. The motion was approved unanimously.

Hawai'i Craftsmen, Downtown Art Center, "Raku Ho'olaule'a 2025," juried exhibition (April 4, 2025 - April 26, 2025) AASC VACS: Maile Yawata, Susan Hogan SFCA COMM: Randy Fujiki SFCA: Eli Baxter, Kamakani Konia.

1. LEW, Mary. 6040-25 "Raku Take Out"
raku, 2025, 10-1/4 x 12 x 12" - (variable)
\$500.00
2. MA, Emily. 6041-25. "Ocean Breeze"
naked raku, 2025, 5-1/2 x 7-1/2 x 7-1/2"
\$300.00
3. MAESHIRO, Faye. 6042-25 "In Tatters"
Raku, 2025, 9-1/4 x 6 x 5"
\$250.00
4. LAU, Jackie Mild. 6043-25. "Dragon Party"
raku fired clay, 2025, 8 x 22 x 18" - (variable)
\$350.00
5. SHULZ, Ryan. 6044-25 "Crown Hunters"
naked raku, 2025, 17 x 6 x 5"
\$900.00
6. WEE, Russell E. 6045-25. "Innovation"
sagar, 2025, 12 x 10 x 10"
\$3,000.00

TOTAL: \$5,300.00

A motion to recommend the six pieces from the Hawai'i Craftsmen, Downtown Art Center, "Raku Ho'olaule'a 2025," was made by Marcia Roberts-Deutsch and seconded by Randall Francisco. The motion was approved unanimously.

Honolulu Printmakers, Downtown Art Center, "97th Annual Exhibition," juried exhibition (April 4, 2025 - April 26, 2025) AASC VACS: Maile Yawata, Susan Hogan SFCA COMM: Randy Fujiki SFCA: Eli Baxter, Kamakani Konia.

1. HAZEN, Vince. 6046-25 "Milu's Ghost Catcher"
screenprint, 2024, 15 x 15"
\$500.00

General Board meeting
July 18, 2025
Page 5

2. KEAN, Steven. 6047-25. "Alliance"
woodcut print, 2024, 28-1/2 x 22-1/2"
\$1,500.00

TOTAL: \$2,000.00

A motion to recommend the two pieces from the Honolulu Printmakers, Downtown Art Center, "97th Annual Exhibition," was made by Janet Sato and seconded by Susana Browne. The motion was approved unanimously. Marcia Roberts-Deutsch recused herself from voting for the Honolulu Printmakers, Downtown Art Center.

6.e. Approval of the Visitation Schedule for Recommendations for Art Acquisition Selection Committees

Elizabeth Baxter presented to the Board the Recommendations to attend eleven exhibitions that applied for the months of July – August 2025.

1. MACC Biennial 2025, Maui Arts & Cultural Center, Schaefer International Gallery, Exhibition dates: July 8 – August 30, 2025.
2. Wondrous Light: Aurora Borealis, Downtown Art Center, Location dates: July 7 – July 27, 2025.
3. Kahi Ching: Chinese Zodiac, Part 1, Arts and Letters Gallery Nu‘uanu, Honolulu, Location dates: July 11 – August 31, 2025.
4. Lucky Live Hawai‘i 2025 Invitational, Viewpoints Gallery in Makawao, Maui, Location dates: July 13 – September 7, 2025.
5. 2025 Hawaii Watercolor Society Open Exhibition, Downtown Art Center, Honolulu, Location dates: July 29 – August 23, 2025.
6. 2025 Abstract Only! 15th Annual Multimedia Juried Competition, Wailoa Center in Hilo, Location dates: August 1 – August 28, 2025.
7. Many Hands, Many Journeys: A Cross-Pacific Artistic Dialogue, Kahilu Exhibits at Kahilu Theatre, Location dates: August 9 – September 14, 2025.
8. Synergistic Tendencies: Explorations in Collaborative Ceramics, Donkey Mill Art Center, Location dates: August 23 – October 11, 2025.
9. KULEAN, Gallery ‘Iolani, Windward Community College, Location dates: August 29 – December 12, 2025.
10. Interisland (New Paintings from New York & Hawai‘i) The Art Gallery, UH Manoa, Location dates: August 31 – December 7, 2025.
11. My Monumental Summer: Live, Love, Paint: Summer Edition, Hō‘ikeākea Gallery AM 101, Leeward Community College, Pu‘uloa Campus, 96-045 Ala ‘Ike . Pearl City, HI 96782, Location dates: August 30 – November 15, 2025.

A motion to approve the schedule recommendations for the AASC to attend all eleven exhibitions that applied for the months of July – August 2025 was made by Marcia Roberts-Deutsch and seconded by Susana Browne. The motion passed unanimously.

6.f. Approval of the Visual Arts Consultants for Art Advisory and Acquisition Selection Committees

Elizabeth Baxter presented to the Board one recommendation for Visual Arts Consultants, Elana Bernnard. The motion to approve this recommendation to the Board with full endorsement was made by Marcia Roberts-Deutsch and seconded by Susana Browne. The motion passed unanimously.

6.g. Approval of the Community Arts Grant Application FY 2026

Brittany presented to the full board approval for the organizations eligible for funding, per availability of funds. The panel reviewed each grant and given them a score with the final reporting date on July 30, 2025. A motion to approve the organizations for the Community Arts Grant Program FY 2026 was made by Susana Browne and seconded by Randall Fujiki. The motion was passed unanimously.

July 18, 2025

Page 6

6.h. Approval of the Artist in the Schools Applications Grant FY 2026

Danica Rosengren presented approval for funding as available for the applicants to the Artists in the Schools program. A motion to approve the applicants as funding is available was made by Susana Browne and seconded by Michael Marshall. The motion was passed unanimously.

Konrad Ng called a break at 12:52 p.m. The board returned at 12:57 p.m.

6.i. Approval of the Design Phase for KCC Culinary Institute of the Pacific by artist Kaili Chun

Kamakani Konia presented to the full board approval for the Design Phase for KCC Culinary Institute by the artist Kaili Chun. He mentioned the artist piece represented six seasons, six pillars representing wet and six pillars representing dry seasons. A motion was made to approve the Design Phase for KCC Culinary Institute of the Pacific by artist Kaili Chun was made by Michael Marshall and seconded by Marcia Roberts-Deutsch. The motion was approved unanimously.

6.j. Recommendation for Approval of the Art Advisory Committee Members for the Wahiawa Center for Workforce Excellence

Kamakani Konia presented to the full board approval for the Art Advisory Committee with the new Wahiawa project and the DOE as well. The names in the discussion, he made a comment of a correction on spelling Kahului, should be Wahiawa Center. A motion was made to approve the committee members for the Wahiawa Center for the Workforce Excellence was made by Susana Browne and seconded by Janet Sato. The motion was passed unanimously.

6.k. Recommendation for Approval of the Art Advisory Committee Members for the Kahului Civic Center

Kamakani Konia mentioned to the full board approval for an Art Advisory Committee for the Kahului Civic Center. A motion recommended to approve the Art Advisory Committee members for the Kahului Civic Center was made by Janet Sato and seconded by Randall Francisco. The motion passed unanimously.

6.l. Approval of Non-State Loan Request from the British Museum, London, United Kingdom

Kathleen Bejado presented to the full board approval for the non-state loan requested by the British Museum. The exhibition will be from January 15, 2025 to May 25, 2026. The work of art for approval is Kapa Moe: Hae Hawai'i by artist Bernice Akamine. Konrad Ng encouraged approval, provided that there was consultation with the Attorney General's office on any necessary rules that should be applied to the loan of a work of art to an international destination. A motion to approve the non-state loan request from the British Museum was made by Konrad Ng and second by Susana Browne. The motion was passed unanimously.

7. Announcements

Konrad Ng made an announcement of welcoming the two new commissioners Marcia Roberts-Deutsch and Randall Francisco. The next board meeting will be held on Kauai on August 22, 2025.

8. Adjournment

Chairperson Konrad Ng called for a motion to close the meeting. A motion was made by Susana Browne and seconded by Janet Sato. The motion passed unanimously. The meeting adjourned at 1:35 P.M.

Art in Public Places Program
Relocatable Works of Art
August 22, 2025

Purchase Recommendations for the Art in Public Places Collection

**East Hawai'i Cultural Center, Hawai'i Contemporary, "Hawai'i Triennial: ALOHA NŌ,"
curated exhibition (February 15, 2025 - May 3, 2025)**

AASC VACS: Sherm Warner, Codie King
SFCA COMM: Michael Marshall
SFCA: Eli Baxter

1. JENSEN, Rocky Ka'iouliokahihikolo'Ehu. 6039-25 "Kanaloa"
koa, c. 1980, 42.75 x 13 x 10.25"
\$30,000.00



TOTAL

\$30,000.00

Bishop Square, Pauahi Tower Lobby, "Allegory II," curated exhibition (April 26, 2025 - June 28, 2025)

AASC VACS: Greg Northrup, Emily McIlroy, Malia Van Heukelem
SFCA: Eli Baxter, Kamakani Konia

1. RUNGE, Dieter. 6048-25 "Double Stack"
oil on canvas, 2024, 36 x 38"
\$1,800.00



2. SAMIMI, Kamran. 6049-25 "Channeled - Waterfall"
stone pigment, watercolor, acrylic, cement on raw canvas, 2025, 50 x 80"
\$12,000.00



3. NAKAMURA, Kenneth. 6050-25. "Fear of Flying"
oil on canvas, 2025, 24 x 32"
\$1,000.00



TOTAL

\$14,800.00

HUB (841 Bishop St.), Hawai'i Contemporary, "Hawai'i Triennial: ALOHA NŌ," curated exhibition (February 15, 2025 - May 4, 2025)

AASC VACS: Jaimey Hamilton, Katherine Love

SFCA COMM: Randy Fujiki

SFCA: Eli Baxter, Kamakani Konia

1. CHING, Kahi. 6051-25 "Uthane IV (Spirit Series)"
Juniper wood, acrylic and glass, 2025, 78 x 32 x 18"
\$6,000.00



2. LUM, Nanea. 6052-25 "Me ke ao"
acrylic and oil on canvas, 2025, 46.5 x 77.5"
\$6,000.00



3. LUM, Nanea. 6053-25 "I ka pō"
acrylic and oil on canvas, 2025, 53.5 x 71.25"
\$6,000.00



TOTAL

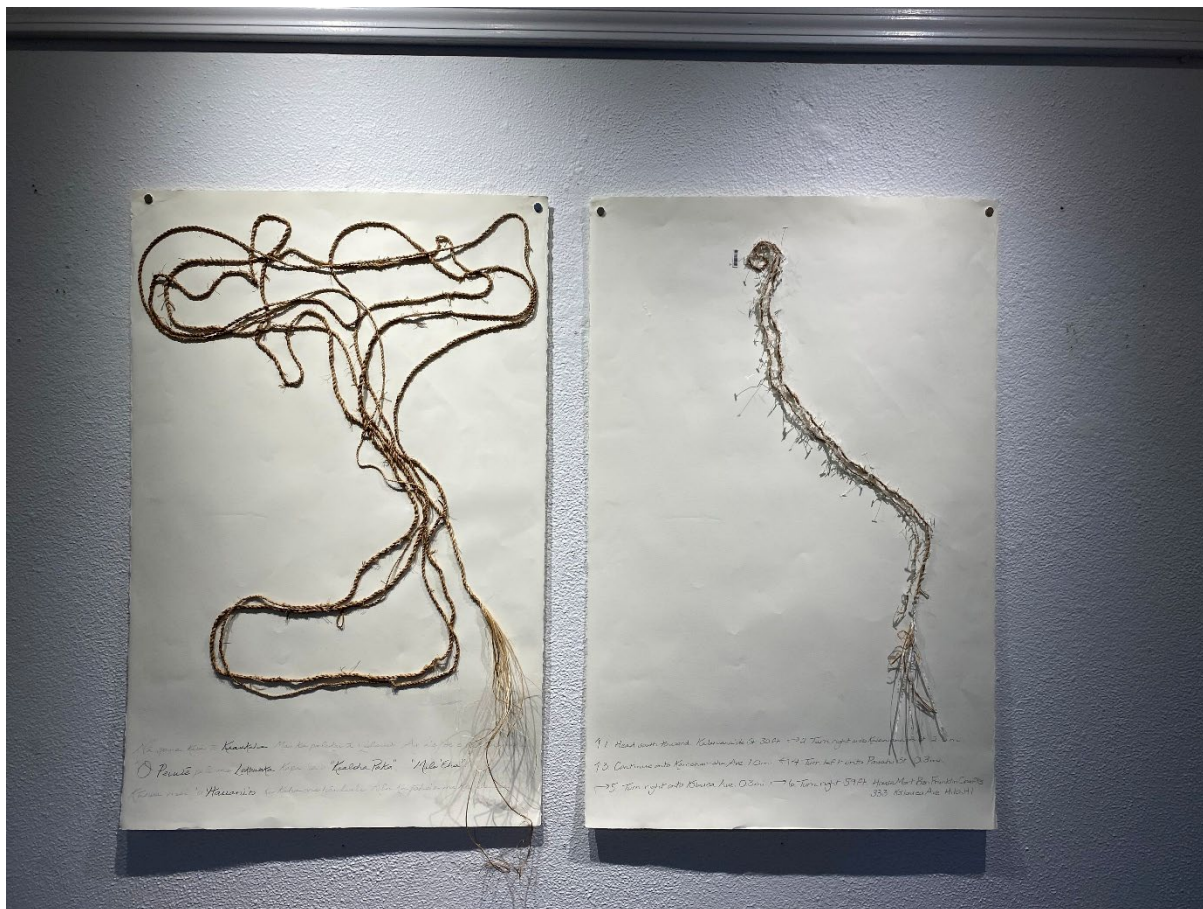
\$18,000.00

Wailoa Art Center, "Hala Exhibition," curated exhibition (May 10, 2025 - June 19, 2025)

AASC VACS: Kaori Ukaji, Codie King, Marilyn Nicholson, Wayne Levin

SFCA: Eli Baxter

1. TEAMEY, Kelly and BABCOCK, Mary. 6054-25 "Hala Economies / Wayfinding Keaukaha"
lauhala, plastic retail tags, receipt on paper diptych, 2025, 40 x 52"
\$500.00



2. SHIMABUKURO, Dee. 6055-25. "Moena Piko"
lauhala, 2025, 50 x 50"
\$2,400.00



3. STOCKTON, Yola Monakhov and WONG-GARY, Mei Li. 6056-25. "Archiving Lauhala, Mei Lin Wong-Gary with Pūhala, Mamona Road, Hawai'i"
woven glossy fiber gelatin silver prints from B&W 8x10" negative, 2025, 16.25 x 20.25"
\$2,000.00



4. STOCKTON, Yola Monakhov and WONG-GARY, Mei Li. 6057-25. "Archiving Lauhala, Hilo International Airport, Hawai'i."
woven glossy fiber gelatin silver prints from B&W 8x10" negative, 2024-2025, 16.25 x 20.25"
\$2,000.00



TOTAL

\$6,900.00

Aupuni Space, "LIVING SOVEREIGN," a solo exhibition by Mealaaloha Bishop, curated exhibition (May 11, 2025 - June 11, 2025)

AASC VACS: Tom Klobe, Russell Sunabe, Henry McMahon, Liz Train

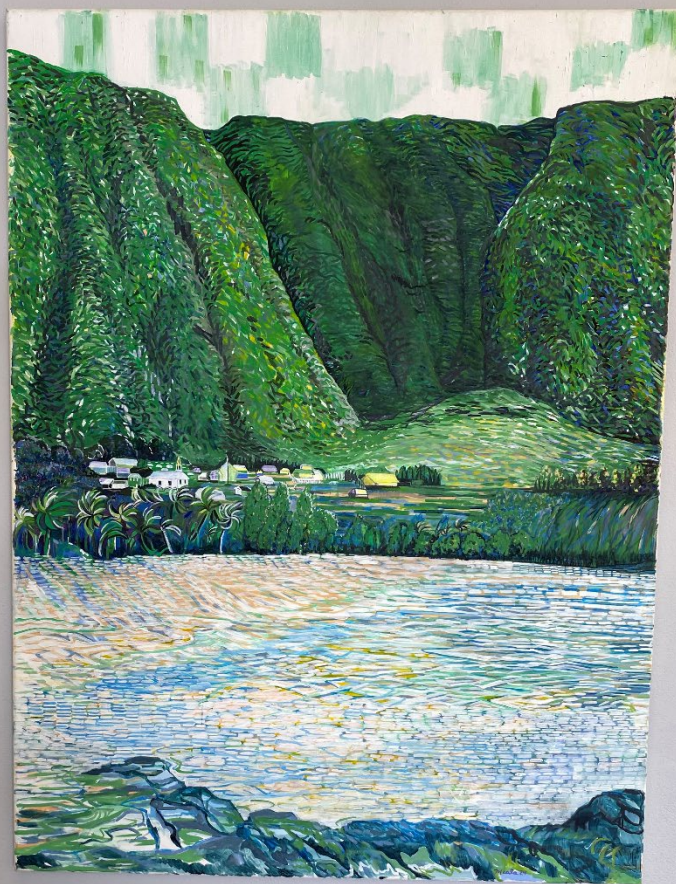
SFCA COMM: Randy Fujiki

SFCA: Eli Baxter

1. BISHOP, Mealaaloha. 6058-25 "Kalaupapa, Moloka'i"

oil on canvas, 2024, 48 x 36 "

\$4,200.00



2. BISHOP, Mealaaloha. 6059-25 "Kalo 2"
oil on canvas, 2024, 30 x 40"
\$3,200.00



3. BISHOP, Mealaaloha. 6060-25. "Luluku Kaneohe"
oil on canvas, 2024, 50.25 x 50 "
\$6,000.00



TOTAL

\$13,400.00

State Foundation on Culture and the Arts
Art in Public Places
STAFF REPORT
August 22, 2025

REQUEST:

Approve recommended schedule for Acquisition Award Selection Committee (AASC) for
September – December 2025

FACTS:

Submitted requests:

Exhibition Title:

Art Kauai 2025

Exhibition Opening Date:

2025-09-12

Exhibition Closing Date:

2025-10-24

Location of Exhibition:

Kaua`i Society of Artists Gallery at Kukui Grove Center, Lihue, Kaua`i

Exhibition Description:

The 40th Annual Art Kaua`i celebrates the ongoing presence of talented and hard working Kaua`i artists working in all varieties of visual arts. Each year, KSA brings in an off-island Juror to review and select works that demonstrate a high level of skill plus a unique vision that demonstrates the creativity and inspiration of artists living on the beautiful Garden Island of Kaua`i.

This year's juror is Tom Klobe.

<https://www.kauaisocietyofartists.org/exhibition-calendar.html>

<https://www.hawaiiartsalliance.org/tom-klobe>

Artists receive from the sale of their works: 75%

2. Exhibition Title:

Mālama Wao Akua

Exhibition Opening Date:

2025-09-12

Exhibition Closing Date:

2025-11-07

Location of Exhibition:

Hui No'eau Visual Arts Center

2841 Baldwin Ave., Makawao, HI 96768

Exhibition Description:

Hui No‘eau Visual Arts Center in collaboration with East Maui Watershed Partnership (EMWP) brings you **Mālama Wao Akua** (Caring for the Realm of the Gods) – a juried art exhibition celebrating the native species of Maui Nui (Maui, Lana‘i, Moloka‘i, Kaho‘olawe). We invite Maui artists to explore our watersheds and use their creative talents to raise awareness about the importance of protecting native species. Selected artwork should be successful in sharing knowledge of the watersheds and native species with others in a meaningful way. Artwork will also be selected based upon a number of criteria, including originality of concept, creativity, technique, professionalism, and presentation.

This year’s jurors are **Inger Tully** (currently serves as the Director of Philanthropy for Maui County at the Hawaii Community Foundation. Prior to this role she worked in the arts for 15 years including positions as the Director of Development - Maui Arts & Cultural Center; Associate Curator - Contemporary Art, Honolulu Museum of Art (HoMA), and Curator of Exhibitions and Curator of Education - The Contemporary Museum (TCM), Honolulu) and **Zach Pezzillo** (Coordinator for the Maui Nui Plant Extinction Prevention Program, has been involved in conservation here in Hawai‘i for many years, and professional photographer <https://www.zachpezzillo.com/>)

percentage that artists receive from the sale of their works: 45%

3. Exhibition Title:

Textiles of Moku o Keawe

Exhibition Opening Date:

2025-09-25

Exhibition Closing Date:

2025-11-02

Location of Exhibition:

Kahilu Exhibits at Kahilu Theatre

67-1186 Lindsey Road

Kamuela, HI 96743

Exhibition Description:

This group invitational exhibition will showcase historic and traditional items alongside recent creations honoring the many textile traditions of the islands. Featuring featherwork, kapa, quilts, weaving, cordage and fashion, the exhibition connects traditional practices to contemporary uses, with an eye on the future of each art form. Artworks by contemporary artists and cultural practitioners of Hawai‘i Island exemplify the bridges connecting media traditions through shared function and design elements.

Curated by Andy Behrle, Kahilu Gallery Director

Names of Invited Artists:

Marie McDonald, Roen Hufford, Bernice Akamine, Kumula'au & Haunani Sing, Renson Madarang, Gay Covington, Puakea Forester, Kapulei Flores, Taupōuri Tangarō, Beau Jack Key, Kira Kamamalu, Jayne Kerns, Micah Kamohoali'i, Aloha Victor, Sig Zane, Edwin Kayton

percentage that artists receive from the sale of their works: 60%

4. Exhibition Title:

Climate Action Hawaii

Exhibition Opening Date:

2025-10-03

Exhibition Closing Date:

2025-10-30

Location of Exhibition:

Capitol Modern

Exhibition Concept / Description:

The Hawai'i State Climate Change Mitigation and Adaptation Commission's (CCMAC) in partnership with Sea College (UH) and Capitol Modern is running an innovative Artist Climate Action Residency program. This residency engages local artists in the co-development of Hawai'i's Climate Action Pathways (CAP) through creating works across a range of artistic media. Through art, this unique program aims to inspire and connect Hawai'i residents to critical climate change challenges. CCMAC is currently co-developing the CAP with state agencies, counties, business and the community to identify pathways to achieve the State's climate goals in a clean and equitable manner. The selected artists are engaging in key topics from the CAP, including cultural knowledge, land stewardship, waste management, energy efficiency, transportation decarbonization, and community resilience.

The selected artists are **Keisha Tanaka**, a photographer from He'eia whose works capture the intimate moments that weave together the rich tapestry of her community's stories;

Benjamin Fairfield, an educator whose work turns trash into music and musical instruments, reminding us that everything we attempt to cast away has potential, worth, and purpose;

Gillian Dueñas, a Chamoru painter who uses art to connect with her ancestors and homeland while in the diaspora; and **Erin Voss** a designer whose work visualizes the complex relationships between communities and ecosystems.

percentage that artists receive from the sale of their works: 100%

5. Exhibition Title:

Hawai'i Craftsmen Annual Statewide Exhibition 2025

Exhibition Opening Date:

2025-10-03

Exhibition Closing Date:

2025-11-01

Location of Exhibition:

Downtown Art Center

Exhibition Description:

Hawai'i's premier statewide juried exhibition – held annually since 1967 – features traditional and contemporary craft from across the state of Hawai'i. Juror Sarah Darro, Curator and Exhibitions Director of Houston Center for Contemporary Craft, will visit each island to make public presentations and select work to be included in the exhibition.

Names of Invited Artists:

Carol Yotsuda

percentage that artists receive from the sale of their works: 60%

6. Exhibition Title:

I Mana Ka Mo'omo'o

Exhibition Opening Date:

2025-10-25

Exhibition Closing Date:

2025-12-13

Location of Exhibition:

Donkey Mill Art Center

Exhibition Description:

Featuring artists from across the Pae 'Āina, this exhibition honors kapa not only as a material practice, but as a profound act of resistance and renewal. Kapa carries the weight of 'ike kūpuna (ancestral knowledge), formed through intimate relationships with 'āina (land), kānaka (people), and wā (time and season). More than artists, kapa makers are cultural practitioners—activists in their own right—dedicated to a process that requires patience, intention, and reverence. In reclaiming this ancestral process, they revitalize Native practices, affirming the presence, persistence, and vitality of Hawaiian identity—and in doing so, empower the Lāhui through the restoration of cultural memory and practice.

Names of Invited Artists:

Maile Andrade, Kamalu du Preez, Kanani Enos, Hina Puamohala Kneubuhl, and Lehuauakea.

Curator is Mina Ellison, Donkey Mill exhibitions Curator

percentage that artists receive from the sale of their works: 50%

7. Exhibition Title:

Journeys

Exhibition Opening Date:

2025-11-01

Exhibition Closing Date:

2026-01-03

Location of Exhibition:

Pauahi Tower , Bishop Square, 1001 Bishop St, Honolulu, HI 96813

Exhibition Description:

Journeys can mean many things. It can literally mean a physical journey that some artists in this exhibition completed at some point in their life (or plan to complete), or it could describe the artistic journey some of the artists have taken to arrive at this point, this place. Artists invited to participate in this exhibition explore the idea of journey in a variety of surprising and creative ways.

Names of Invited Artists:

Ruben Aira, Sung Mi Cha, Carol D'Angelo, Dexter Doi, Jinja Kim, Min Chong Kim, Sooki Kim, David Kiyabu, Tae Ja Koki, Soon Jung Kwon, Jane Ra, Dieter Runge, Christy Seaquist, Yong Hee Shin, Hannah Shun, Frances Wong, George Woollard, Mik Yung Yee

Curated by Dexter Doi <https://www.theartagency.net/dexterdoi>

percentage that artists receive from the sale of their works: 80%

8. Exhibition Title:

From River to Richards

Exhibition Opening Date:

2025-11-06

Exhibition Closing Date:

2025-11-29

Location of Exhibition:

Downtown Art Center

1041B Nuuanu Ave. Second Floor

Honolulu, HI

Exhibition Description:

Central Honolulu, from River Street in the west to Richards Street in the east and between Vineyard Boulevard and Aloha Tower, has been at the center of dramatic urban and cultural change, decade after tumultuous decade, since the early 1800's. From River to Richards is a juried documentary photography exhibit seeking imagery about how the past informs the present and how both offer glimpses into the future of how we live, work and play in this dynamic and resilient district.

Juror, PF Bentley, an award-winning American photojournalist, whose distinguished career includes 20 years as a photojournalist and Special Correspondent for TIME Magazine will select

the images for the exhibit. Writer and photographer Floyd Takeuchi conceived the show which will be coordinated by photographer Shane Sakata. For context, the exhibition will also include archival photographs by Francis Haar and reproductions of prints by Kate Kelly.

Artists receive 65% of proceeds from the sale of artworks.

9. Exhibition Title:

17th Annual Hawai'i Nei Art Exhibition

Exhibition Opening Date:

2025-11-07

Exhibition Closing Date:

2025-12-11

Location of Exhibition:

Wailoa Center

200 Piopio Street

Hilo HI 96720

Exhibition Description:

Hawai'i Nei is a juried art exhibition featuring both professional and amateur artists of all ages who have submitted artwork highlighting the native plants, animals and habitats of Hawai'i Island in a wide range of media including watercolor, photography, sculpture, fiber, and woodwork. This year marks the 17th annual show and is a collaboration among the Three Mountain Alliance outreach program 'Imi Pono no ka 'Āina, the Hawai'i Island Art Alliance, the Department of Land and Natural Resources Division of Forestry and Wildlife, and Wailoa Center State Parks.

Jurors this year are:

SCOTT GORRELL Visual artist. <https://www.scottgorrellart.com/>

ALEX WANG is a Wildlife Biologist for the state Division of Forestry and Wildlife and based in Hilo, Hawai'i who specializes in Hawaiian bird conservation. He has always considered himself an amateur wildlife photographer and photographing Hawai'i's unique wildlife has interested him since getting a little point and shoot camera before volunteering out in the northwestern Hawaiian islands (Papahānanumokuākea National Monument) in 2009.

percentage that artists receive from the sale of their works: 60%

10. Exhibition Title:

Ocean of Peace

Exhibition Opening Date:

2025-12-06

Exhibition Closing Date:

2026-01-31

Location of Exhibition:

Maui Arts & Cultural Center, Schaefer International Gallery

One Cameron Way, Kahului, HI 96732

Exhibition Description:

The exhibition Ocean of Peace features contemporary artists of Micronesian heritage based in Hawai'i. The "Ocean of Peace" represents a framework adopted by Pacific Island leaders in 2025, envisioning a future for the Pacific region as a space of harmony and cooperation that draws from traditional values and customs. These artists integrate the beliefs and practices of their Micronesian cultures with contemporary lived experiences to express ways we can collectively realize a future of peace. The curatorial team is Jonathan Yukio Clark, Director of Schaefer International Gallery at Maui Arts & Cultural Center; Mary Therese Perez Hattori, EdD, Director of the Pacific Islands Development Program at East-West Center; Eric Chang, Arts Program Manager at East-West Center; and Annie Reynolds, PhD, Curator of East-West Center Gallery. Artworks span painting, drawing, sculpture, weaving, digital rendering, and video, representing individually created pieces alongside collaborative projects.

percentage that artists receive from the sale of their works: 70%

RECOMMENDATION:

Staff recommends AASCs to be convened for all 10 AASC applications listed above.

Prepared by:

Elizabeth Baxter, Curator

date: August 22, 2025

Recommend:

c Approval

Disapproval

Karen Ewald, Director

Date

Approval of 2025-2029 Strategic Plan August 22, 2025

Staff Report

Approval is requested for the 2025-2029 Strategic Plan on the State Foundation on Culture and the Arts.

To formulate the draft plan, consultant group GUILD was contracted by the State Foundation on Culture and the Arts (SFCA) to gather information and build the goals. GUILD conducted multiple meetings with stakeholders from the community, the SFCA commission, SFCA employees, and also conducted listening sessions on Hawaii Island, Kauai, Oahu and Maui. An electronic survey was also sent out to the broader community statewide.

This strategic plan draft is the result of the input. The intention to incorporate Hawaiian words was initiated by the SFCA employees and implemented with consultation from various individuals from within the Hawaiian community.

The following 4 overarching goals include strategic priorities, vision, mission, and values. Once approved the plan will be effective August 22, 2025 through June 30, 2029. This is required by the agencies' Federal partnership with the National Endowment for the Arts. Implementing the planned priorities and accompanying strategies is aimed to strengthen existing programs and services, pursue new initiatives, embrace the culture of transparency and accountability, as well as set and meet benchmarks that communicate SFCA's intentions clearly to the broader community.

Upon approval, actionable items with OKR's, and measurables will be developed by employees of the SFCA under the guidance of the Executive Director and leadership team.

(DRAFT – PRE LAYOUT/DESIGN)

STATE FOUNDATION ON CULTURE AND THE ARTS
2025 - 2029 STRATEGIC PLAN WITH ACTION ITEMS

To promote, perpetuate, preserve culture and the arts in Hawai‘i.
In the Ho‘o context of action, to do.

AFFIRM-HO‘OIA (to make true)

*Affirm and acknowledge our place and the community we serve:
MOANANUIĀKEA - The vast Pacific Ocean and its inhabitants of
Micronesia, Melanesia and Polynesia.*

- Honor, support and prioritize Native Hawaiian culture, arts, artists, and cultural practitioners.
 - Regularly communicate and convene with Native Hawaiian organizations and individuals.
 - Exhibit Native Hawaiian contemporary and traditional arts statewide
- Amplify voices by expanding awareness of accomplishments.
- Foster the artistic expressions of Hawai‘i’s diverse cultures and communities.

EDUCATE-HO‘ONA‘AUAO (to disperse information)

Strengthen arts and culture in education for all ages and communities.

- Support and Expand our Statewide Partnerships in Providing Arts Education for All Students.
- Expand Community-Based Programs
 - Prioritize kupuna, neighbor islands, and historically marginalized communities.
 - Increase support for student artists on the university level specifically on neighbor islands.

STATE FOUNDATION ON CULTURE AND THE ARTS 2025 - 2029 STRATEGIC PLAN WITH ACTION ITEMS

To promote, perpetuate, preserve culture and the arts in Hawai'i.
In the Ho'o context of action, to do.

CONVENE-HO'ĀKOAKOA (to call together)

- Build Community Capacity for Creativity, Communication and Learning
- Broaden Public Awareness and Appreciation of the Arts
 - In partnership with island communities, support the creation of a multimedia experience that tells the story of each of the neighbor island's traditional and contemporary arts.

CULTIVATE-HO'OKANU (to plant)

Establish a framework for developing creatives and new audiences

- Performing Arts
 - Establish a task force to support the needs of the performing arts community across the state.
- Diversity in Engagement and Creativity
 - Ensure that diverse cultures and art forms are supported including cultural practice.