

**To Promote,  
Perpetuate and  
Preserve Culture  
and the Arts  
in Hawai'i**



**State Foundation on Culture and the Arts  
2025 ANNUAL REPORT**





# 2025 SFCA Annual Report

## TABLE OF CONTENTS

Board of Commissioners .....	00
Mission and Values .....	1
About the SFCA .....	2
SFCA Programs .....	3
Strategic Plan 2025 Highlights and 2026 Goals .....	4-5
Community Mahalo .....	6-7
Community Projects, Grants and Partnerships .....	8-13
State Capitol Pools Project	
Community Grants	
Community Partnerships	
Arts Education .....	14-15
Providing Arts to Schools	
AITS and HŌ'A highlight	
Why arts education matters .....	16-17
Art in Public Places Program .....	18-20
Commissioned Works of Art	
Art in Public Places Collection	
Art at the Capitol	
State Art Museum .....	21
2025 Exhibits	
2025 Events	
2025 Program Highlights	
King Kamehameha Celebration Commission Annual Report .....	22-23
ARTS FIRST Partnership Annual Report .....	24-25
2024-2025 Financial Summary .....	26-27
Appendix A: Art in Public Places Program Purchases and Contracts .....	28-30
Appendix B: Grants and Community Program Contracts .....	31-35
Appendix C: Schools Served .....	36-40
Updates, Highlights, and Corrections .....	41
SFCA Staff .....	42



**COVER:** "Mānaiakalani" by Scott Norwood Fitzel, 2024.  
Stainless steel and cast glass sculpture. SFCA Art in  
Public Places Collection. Commissioned for the Nānākuli  
Public Library through the SFCA.





# BOARD OF COMMISSIONERS

July 1, 2024 – June 30, 2025

**KONRAD NG, *Chair***

**SEAN CONNELLY, *At-Large***

**SUSAN BROWNE, *At-Large***

**NALANI BRUN, *Kaua'i County***

**RANDALL FUJIKI, *At-Large***

**JILL KURAMOTO, *At-Large***

**MICHAEL MARSHALL, *At-Large***

**RONALD MICHIOKA,  
*City & County of Honolulu***

**JANET SATO, *Maui***







View of “Hawai‘i Triennial 2025: ALOHA NŌ” exhibit at Capitol Modern. Artwork in foreground: Kahi Ching, “‘Uhane II”, kiawe wood and basalt, 2025. Artwork on loan from the artist.

## MISSION

To promote, perpetuate and preserve culture and the arts in Hawai‘i.

## VALUES

We celebrate and emphasize the cultural richness and diversity of Hawai‘i.

We believe in equitable access, transparency, and community-based decision making.

We share in the responsibility to perpetuate the Native Hawaiian culture and the arts.

We view art and cultural engagement as critical to the educational, economic, and social well-being of individuals, communities, and the State of Hawai‘i.



## ABOUT THE SFCA

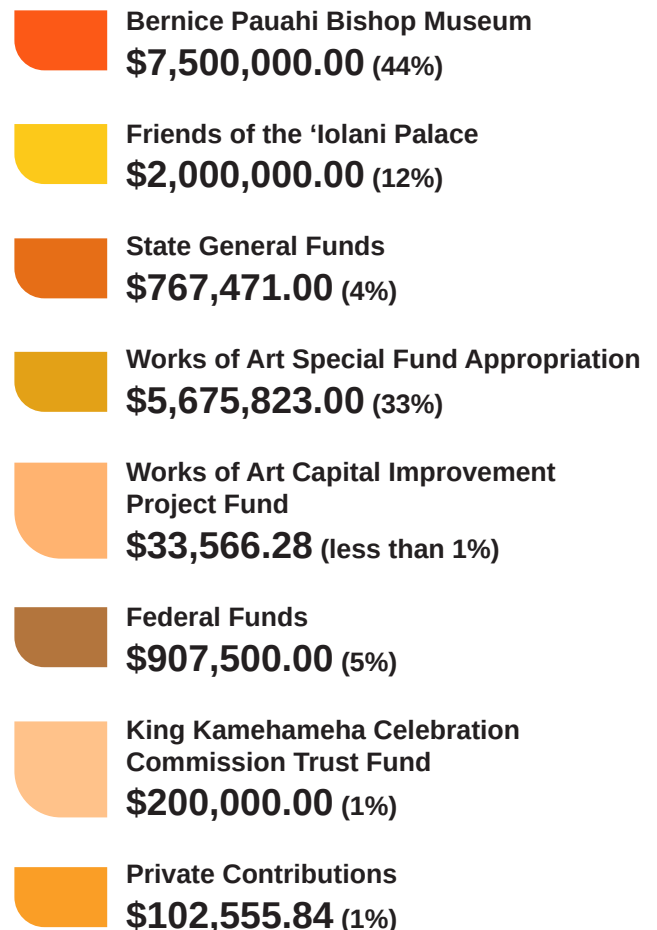
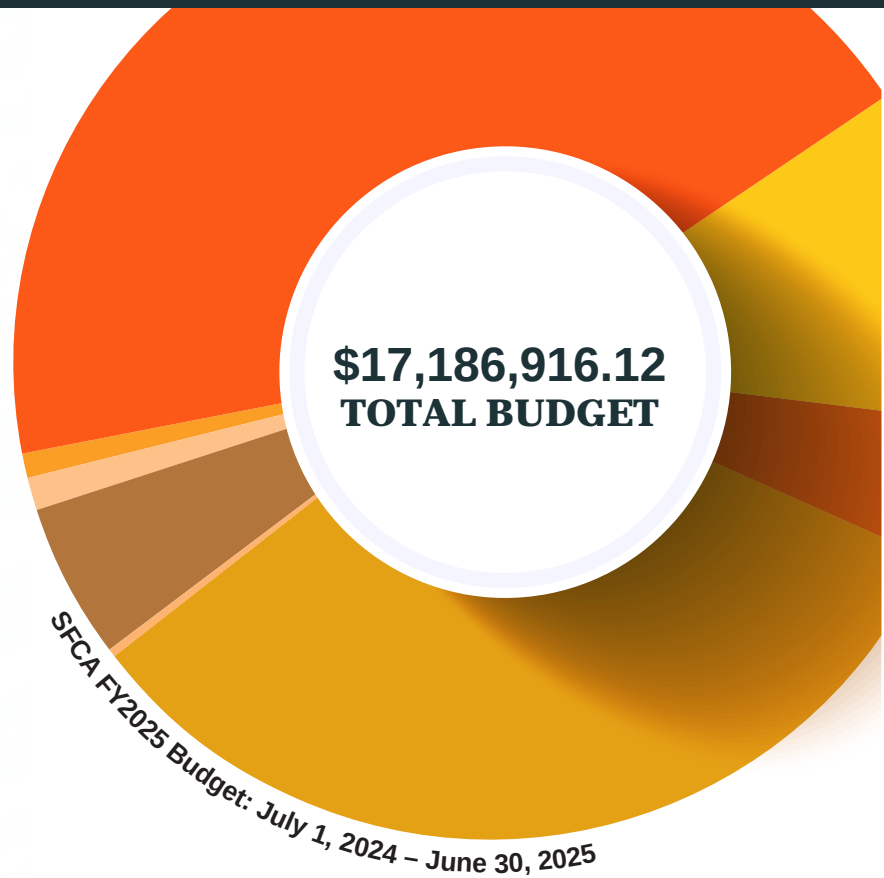
The Hawai'i State Foundation on Culture and the Arts (SFCA) is Hawai'i's state government arts agency, established in 1965 by the Hawai'i State Legislature, through the vision and effort of Hawai'i leaders including architect and State Planning Coordinator Alfred Pries, SFCA Founding Chairperson Masaru "Pundy" Yokouchi, State Senator Nadao Yoshinaga, and Governor John Burns. The creation of a state arts agency made Hawai'i eligible to receive federal grants from the National Endowment for the Arts (NEA), newly established on September 29, 1965. The SFCA is administratively attached to the Department of Accounting and General Services.

### What is a state arts agency?

State arts agencies were created by legislatures and governors to promote the arts and reduce barriers to cultural participation. Every state and U.S. jurisdiction has a designated arts agency, providing grants, services, and leadership that make the arts accessible to everyone. State arts agencies help people and places to thrive by making our economy, our schools, our communities, and our connections with each other stronger through the arts.

State arts agencies are funded through appropriations from state legislatures. By law, state arts agencies also receive 40% of the federal grant dollars Congress provides to the National Endowment for the Arts.

Learn more about state arts agencies and regional arts organizations nationwide on the National Assembly of State Arts Agencies website: [NASAA-Arts.org/state-arts-agencies](https://NASAA-Arts.org/state-arts-agencies)



# SFCA PROGRAMS

## Grants and Programs

- Arts Education
- Community Projects
- Folk and Traditional Arts

## Art in Public Places Program

- Public Art Collection
- Hawai'i State Art Museum

## King Kamehameha Celebration Commission



## Strategic Priorities & Vision

We envision a thriving and vibrant Hawai'i enriched by culture and the arts.

### Strategic Priorities



#### Culture

Support, foster and celebrate the artistic expressions of Hawai'i's diverse cultures and communities.



#### Engagement

Enhance public engagement in culture and the arts.



#### Education

Strengthen arts education for all learners.



#### The Arts

Enrich the public sphere through the arts.

### Strategic Plan

The State Foundation on Culture and the Arts' (SFCA) goals are outlined in our current Strategic Plan which includes strategic priorities, vision, mission, and values. The plan is effective July 1, 2019 through June 30, 2025 as required by the agency's federal partnership with the National Endowment for the Arts. The priorities adopted are reflective of the input by the community, SFCA Commissioners and staff. In implementing the plan's priorities and accompanying strategies, SFCA intends to strengthen existing programs and services, pursue new initiatives, embrace a culture of transparency and accountability, as well as set and meet benchmarks that communicate our intentions clearly to our staff, partners, and the broader community.

We envision a thriving and vibrant Hawai'i enriched by culture and the arts.





# STRATEGIC PLAN:

## Fiscal Year 2025 Highlights

### Culture

- Launched the State Capitol Pools Commissioned Work of Art project with artist Solomon Enos and the State of Hawai'i Department of Accounting and General Services.
- Funded the Folk and Traditional Arts program with cohorts throughout the state in support of ulana 'ie weaving, ensuring growth on Neighbor Islands.

### Engagement

- Engaged in multiple listening sessions throughout the state regarding the SFCA Strategic Plan 2025-2029.
- Supported community participation on State Capitol Pools Commissioned Work of Art project artwork creation.
- Conducted regular virtual information briefings on legislation affecting the arts and culture in the state with the Hawai'i Arts Alliance, strengthening advocacy efforts.

### Education

- Collaborated with public and private entities statewide to strengthen out-of-school arts education programming on the Neighbor Islands and in rural areas of O'ahu, including the new Hawai'i Open Arts (HŌ'Ā) 'āina-based arts education program.
- Delivered arts learning opportunities for neurodiverse populations through specialized programs at Capitol Modern and on Neighbor Islands. Done in partnership with the Honolulu Theatre for Youth and with support from the Friends of the Library of Hawai'i.

### The Arts

- Updated the use of the Art in Public Places Collection through a searchable online database. Public can virtually access the entire collection, with information on location and history of works of art in the collection.
- Partnered with Hawai'i Contemporary for the Hawai'i Triennial 2025. Capitol Modern: the Hawai'i State Art Museum was a host site for a Hawai'i Triennial: ALOHA NŌ exhibition.

# STRATEGIC PLAN:

## Fiscal Year 2026 Goals



### HŌ'OIA - AFFIRM (to make true)

- Host regular, structured Community Listening Sessions with a public commitment to report back.

Reporting will include how community feedback has been implemented in SFCA operations, programming, and policy.

- Review and revise SFCA Art in Public Places Collection plans. Develop a clear, actionable Strategic Deaccessioning Policy to optimize collection relevance, reduce long-term care costs, and align the collection with the State Art Museum's renewed mission.



### HO'ĀKOAKOA - CONVENE (to call together)

- Collaborate state-wide with non-arts centric organizations

(e.g., hospitals, civic groups, local businesses) to integrate art and culture into areas like wellness, urban development, and social services.

- Grow partnerships with local media outlets (print, radio, and digital) to feature regular Arts Spotlights. Examples: interviews with local artists, reviews of exhibitions, and commentary on the relevance of art and culture to current events.



### HO'ONA'AUAO - EDUCATE (to disperse information)

- Scale specialized programs (e.g., dementia-friendly tours,

sensory-friendly hours, oral history workshops with elders) to meet the needs of various populations. Include appropriate training for museum staff and docents.

- Grow connections and relationships with the State of Hawai'i Department of Health and health nonprofits. Acknowledging the deep intersections of arts, wellness and healing.



### HO'OKANU - CULTIVATE (to plant)

- Support a wide range of artistic expressions through artist residencies, community

projects, public events, and culturally diverse exhibitions and performances. Design and deliver a variety of programming.

- Support access to state heritage (especially for rural/remote students, researchers, and local historical societies) by adding to the SFCA's free, searchable online databases. Continue to digitize collections (artifacts, manuscripts, and artwork).



# MAHALO TO OUR COMMUNITY PANELISTS

Community panelists make decisions at the SFCA regarding grants, artwork commissions, art acquisitions and judging student competitions. With the dedication and expertise of these volunteers, we make informed decisions that result in effective programming. Mahalo to all who participated in the decision making of the SFCA in Fiscal Year 2025.



"Ho'okupu, a traditional "gift" or "offering". Mākaha, O'ahu" photograph by Ha'a Keaulana, 2016. Art in Public Places Collection of the State Foundation on Culture and the Arts.

## Hawai'i Island

Mary Begier  
Jake Boggs  
Meidor Hu  
Codie King  
Wayne Levin  
Fia Mattice  
Hiroki Morinoue  
Marilyn Nicholsen  
Margo Ray  
Leslie Steinwachs  
Kaori Ukaji  
Sherman Warner

## Kaua'i

Wayne Miyata

## Maui

Neida Bangerter  
Paul Janes-Brown  
Jennifer Owen  
Michael Takemoto  
Inger Tully

## O'ahu

Angela Arvai  
Mary Babcock  
Carolann Biederman  
Mark Branner  
Drew Broderick  
Emma Broderick  
Gaye Chan  
Zita Cup Choy  
Justyn Dela Cruz  
Tommy Driskill  
Walter Eccles  
Brady Evans  
Matt Gilbertson  
Erik Haines  
Jaimey Hamilton

Edd Tokarz Harnas  
Ridge Hirano  
Snowden Hodges  
Susan Hogan  
Richard Horita  
Wade Ishii  
Beth Iwata  
Diana Nicholette Jeon  
Ka'ili Kaulukukui  
Wendy Kawabata  
Kenyatta Kelichi  
Tom Klobe  
Tom Klobe  
Ernest P. Lau  
Lila Lee

Wayne Levin  
Zoe Liu  
MaryAnne Long  
Katherine Love  
Johnny Macas-Friere  
Marques Hanalei Marzan  
Emily McIlroy  
Henry McMahon  
Mary Mitsuda  
Michelle Morihara  
Wayne Morioka  
Dawn Mostiler  
Laurel Nakanishi  
Deborah Nehmad  
Greg Northrup

Clay Park  
Maya Portner  
Keith Regan  
Kamran Samimi  
Terry Savage  
Brian Shin  
Hannah Shun  
Dr. Maya Soetoro-Ng  
Katie Stephens  
Russell Sunabe  
Trevor Tamashiro  
Liz Train  
Lauren Trangmar  
Malia Van Heukelem  
Maile Yawata



# Schools, classroom teachers, and teaching artists inform and thank state legislators for funding supporting arts education.

“Our school community has been enriched as teachers and students learned new ways to approach learning in the fine arts and ‘āina-based education. We hope the legislature can continue to support opportunities like this for our students.”

- LETTER TO SEN.

**DECORTE FROM WAI'ANAE ELEMENTARY SCHOOL**



“Beyond enriching their understanding of fine arts standards, it also offers classroom teachers a valuable hands-on mentor to enhance arts integration within their curriculum, significantly supporting student emotional well-being.”

- LETTER TO LEGISLATORS FROM KONAWAENA HIGH SCHOOL



“For our multilingual students, many of whom face significant challenges in adapting to a new language and culture, the program provided an affirming and joyful space for learning.”

- LETTER TO REP. LAMOSAO FROM WAIPAHU HIGH SCHOOL



Waiahole Elementary School students practice observation skills at He'eia Fishpond during a Hawai'i Open Arts session with Paepae o He'eia.





## COMMUNITY PROJECTS: State Capitol Pools Project

The State Capitol Pools project is a multi-phase project managed by the SFCA. The State of Hawai'i Department of Accounting and General Services (DAGS), Public Works Division initiated the State Capitol Pools Project at the Hawai'i State Capitol in July 2023 with the formation of the State Capitol Pools Art Advisory Committee. Increased water damage and maintenance costs to the building over the years caused the DAGS Public Works Division to seek a creative waterless solution to the shallow pools surrounding the building.

The State Foundation on Culture and the Arts (SFCA) successfully addressed a similar issue in its sculpture garden glass pool treatment at the No.1 Capitol District Building, which houses Capitol Modern: the Hawai'i State Art Museum and several state government offices. The waterless pool design by artist and illustrator Solomon Enos keeps the integrity of the historic architectural character of the Hawai'i State Capitol building. The murals used as the basis for the design were created with participation by hundreds of members of the public.

### State Capitol Pools Art Advisory Committee

- Chairperson: Keith Regan, DAGS Comptroller (Chief Building Administrator)
- Senate Designee: Senator Chris Lee
- House of Representatives Designee: Representative Adrian Tam
- Community: Ernest Lau P.E., Manager and Chief Engineer, Board of Water Supply
- Design Consultant: Katie Stephens, AIA, AHL Historic Architect (Ex-Officio)
- Visual Arts Consultant: Drew Broderick, Director, Kapiolani Community College Koa Gallery
- Cultural Consultant: Ramsay Taum, Cultural Advisor
- SFCA Board of Commissioners Member: Jill Kuramoto



Artist Solomon Enos holding a digital rendering of the waterless pool design.

PHOTO CREDIT: HAWAII STATE SENATE/ZOE WILKS

# 2026 COMMUNITY PROJECT FUNDING

By supporting state arts agencies through Partnership Agreements, the National Endowment for the Arts makes the arts available in more communities than it could through direct grants. The state arts agencies (such as the SFCA) greatly extend the federal reach and impact, translating national leadership into local benefit.

Grants are a major part of SFCA's outreach, providing funding to support nonprofit organizations, individuals, and schools that provide training and services in the arts, culture and humanities across the state.

The SFCA administered \$9,795,400 in fifty-one grants to fifty arts and culture organizations in the state of Hawai'i for fiscal year 2025, through Biennium Grants, the Outreach Initiative Program, Folk and Traditional Arts Apprentice Mentoring Grant, State of Hawai'i Legislature Grants-In-Aid, and State of Hawai'i Legislature Special Purpose Appropriations.

Kumulā'au Sing and Haunani Balino-Sing leading a guided tour of the "Nā Akua Ākea: the Vast and Numerous Deities" exhibit at Capitol Modern: the Hawai'i State Art Museum.

## Biennium Grants

\$580,000 was granted to forty-two organizations on Hawai'i Island, Kaua'i, Lāna'i, Maui, and O'ahu. Some organizations used the funding for projects on Neighbor Islands, including Moloka'i. The Biennium Grants program provides funding for organizations who support programs and projects that advance the arts, culture, and creativity in the lives of the people of Hawai'i. Funds are distributed through the State to nonprofit organizations offering culture and arts programs, many of which reach the neighbor islands and underserved and rural areas. See pages 35-36 for a full list of grantees and projects. In FY2026, the Biennium Grants Program will change to the Community Arts Grant Program.

## Outreach Initiative Program

Supporting regional touring and outreach activities that increase opportunities for individuals to experience different forms of artistic and cultural expression and engagement. The program is open to nonprofit 501(c)3 arts, culture, or humanities organizations. The University of Hawai'i arts, culture, and humanities departments or divisions are also eligible. For FY2025, the Outreach Initiative Program awarded \$50,000 to the University of Hawai'i-Manoa Outreach College's Statewide Cultural Extension Program (SCEP). SCEP provides statewide access to the arts and culture presentations through public libraries, senior centers, public housing communities, and online. In FY2025, these performances reached 2,704 people across the State.

## Hawai'i State Legislature Special Purpose Appropriations

The SFCA administered \$8,550,000 for two operating support Special Purpose Appropriations from the Hawai'i State Legislature. These funds sustain and support the Bernice Pauahi Bishop Museum (the State of Hawai'i Museum of Natural and Cultural History) and the 'Iolani Palace State Monument, managed by the Friends of 'Iolani Palace.

## Folk and Traditional Arts – Apprentice Mentoring Grant

\$50,400 was granted to the "Nā Akua Ākea (The Vast and Numerous Deities)" project, Kumulā'au Sing and Haunani Balino-Sing.

In FY2025, SFCA Folk and Traditional Arts funds supported cultural activities on Hawai'i Island, Maui, and O'ahu. These activities included curated public presentations of the "Nā Akua Ākea: the Vast and Numerous Deities" exhibit at the State Art Museum, weaving workshops teaching sustainable practices, and mentoring of advanced practitioners.

Learn more about the work of Ke Kumu Hawai'i on their website, [KeKumuHawaii.com](http://KeKumuHawaii.com)

## Hawai'i State Legislature Grant-in-Aid (GIA) 2025

The SFCA administered \$565,000 for six operating costs grants for organizations on Hawai'i Island, Kaua'i, Lāna'i, and O'ahu. The State Legislature awards Operating and Capitol Improvement Project grants to Hawai'i organizations and determines which state department will administer the awards. Administrators handle contracting, payments, and final reporting. Additional information about the GIA is on the State Legislature website: [capitol.hawaii.gov/session/GIA.aspx](http://capitol.hawaii.gov/session/GIA.aspx)





“E Ulu E Ola” performers in costume as local plants and animals, sun, and rain.  
PHOTO CREDIT: CHRISTINE LAMBORN

## E ULU E OLA

The State Foundation on Culture and the Arts partnered with students from the University of Hawai‘i at Mānoa Department of Theatre and Dance to present “E Ulu E Ola”, a multi-sensory, participatory performance at Capitol Modern: the Hawai‘i State Art Museum. They presented 2 sensory friendly performances for over 50 young people and their families. Children and their caregivers were introduced to

an enchanting garden inhabited by colorful characters representing local plants and animals trying to help their caterpillar friend flourish and grow into a butterfly.

This original play was created by Lisa Nilsen as a Master of Fine Arts thesis. It was informed by educational modalities including Brain Compatible Dance Education, Play Schemas, and Waldorf Educational Theory, as well as Maslov’s Hierarchy of Needs and the Lōkahi Wheel.





## MUSEUM WITHOUT WALLS

### Hawai'i Community Foundation partnership

In a major push to make arts education more accessible to underserved communities across the state, the Hawai'i Community Foundation (HCF) awarded \$72,800 to 10 arts education programs through the Museum Without Walls Arts Education Initiative in fiscal year 2024, with some of the funded programming taking place in fiscal year 2025. This initiative, in collaboration with the Hawai'i State Foundation on Culture and the Arts (SFCA),

provides inclusive arts education opportunities in the fine arts to all age groups, from keiki to kūpuna.

Grant recipients are listed on page 32. Learn more about the partnership on the SFCA website: [sfca.hawaii.gov/over-72k-in-grants-to-support-arts-education-across-hawaii](https://sfca.hawaii.gov/over-72k-in-grants-to-support-arts-education-across-hawaii).

Community participants in the "Mo'olelo Mural Magic" project. Artist Kayti Lathrop and the Kilauea Neighborhood Association created a collaborative mural.  
PHOTO CREDIT: KAYTI LATHROP

## HAWAI'I STATE POET LAUREATE

### The Hawai'i State Poet Laureate Program has concluded its third year of a three-year initiative.



Launched in 2022 by the Hawai'i Council for the Humanities in partnership with the Hawai'i State Foundation on Culture and the Arts, the State Librarian and other community stakeholders, the Hawai'i State Poet Laureate recognizes and honors a Hawai'i poet of exceptional talent and accomplishment. The program is intended to promote and encourage appreciation of poetry and literary life in Hawai'i through events, publications, workshops, and readings featuring local poets. The fellowship awards \$20,000 year and helps activate poetry in communities throughout the state.

In her third and final year as Hawai'i State Poet Laureate, Brandy Nālani McDougall actively engaged with communities through readings, public appearances, and participation in local events including the 2025 Art at the Capitol event.

The next Hawai'i State Poet Laureate will be announced in February 2026.

Hawai'i State Poet Laureate  
Brandy Nālani McDougall  
reading poetry at the April 2025  
Art at the Capitol event.



## SFCA provides arts education for Hawai'i public and charter schools

The State Foundation on Culture and the Arts provides arts education for State of Hawai'i public and charter schools through our programs:

- SFCA Artists in the Schools arts residencies in classrooms (pre-K through 12)
- Hawai'i Open Arts ('āina-based arts program for grades 2-6, pilot program)

## Arts integration gets students excited about learning

**"Arts education provides skills vital to 21st-century success:** critical thinking, creative problem-solving, collaboration, communication, and information literacy. In a global economy driven by knowledge and ideas, arts education is a necessity. The best-paying jobs require workers with creativity and higher-order thinking and communication skills, and companies are increasingly looking for these qualities in the workers they

recruit. In studying the arts, students hone their perceptual, analytic, and interpretive skills while developing creative thinking, communications, and problem-solving abilities. Additionally, 74% of educators say that the risk of job automation is lower in professions that require creative problem-solving skills." – National Assembly of State Arts Agencies, "Arts Education Provides Skills Critical to 21st century success"

<sup>1</sup> National Assembly of State Arts Agencies, *Arts Education Provides Skills Critical to 21st century success*  
<https://nasaa-arts.org/communication/arts-education-provides-skills-critical-to-21st-century-success/>





Fishpond diorama by Waiāhole Elementary School student.

## HAWAI'I OPEN ARTS (HŌ'Ā) SPOTLIGHT: Waiāhole Elementary School student presentations at Wai Fest

2nd and 3rd graders from Waiāhole Elementary (Kāne'ohe, O'ahu) at Wai Fest (Windward Mall) gave presentations on what they learned through the SFCA Hawai'i Open Arts education program. Each student had a presentation to share with the public, with topics including invasive and native species, limu, impact on storm drains, and how humans impact the 'āina to the water cycle. The human impact presentation included a game that was also a quiz.

For fiscal year 2025, Hawai'i Open Arts (HŌ'Ā) was 100% supported by public funds through the SFCA Works of Art Special Fund.

## ARTISTS IN THE SCHOOLS SPOTLIGHT: Maui High School students use art to connect with marine science

An SFCA Artists in the Schools grant funded a residency for 11th and 12th grade Maui High School students in Lacey Brandt's 2024-2025 Marine Science class. SFCA Artistic Teaching Partner Maggie Sutrov reported "Students worked as both scientists and artists to communicate the value of Hawai'i's ocean ecosystem." Students used art to visualize the first cellular life in the ocean, as well as to study early complex organisms. Close to 100 paintings by the students were later displayed at the Hawaiian Islands Humpback Whale National Marine Sanctuary in Kīhei.

In reflecting on the projects, teacher Lacey Brandt said, "The teaching knowledge that Maggie brought to the classroom was powerful for the students. As the students were exposed to new art mediums, they learned and grew so much in detail and technique because of all the knowledge the teaching artist poured into them and the effort she took to work with so many students through their entire process. Additionally, Maggie truly linked the learning and the art, almost making both something fluid in our science class. Our learning and our artistic expression became meshed together as an entire experience. I'm so thankful that my science students have this amazing opportunity."

Maui High School student painting in class.



Graphic for "Our Ocean, Close Up" exhibit at the the Hawaiian Islands Humpback Whale National Marine Sanctuary.



Super  
Saturday events at  
the State Art Museum  
provide free, family-  
friendly hands-on art  
making and learning  
opportunities.



# SUPPORTING ARTS EDUCATION IN HAWAI'I

We support high quality, standards-based arts education as a part of PreK-12 basic education. Each year, the SFCA hosts student exhibitions; advances Artists in the Schools (AITS) programming through paid residencies; operates the Hawai'i Open Arts Program (HŌ'Ā), an 'āina-based arts program that helps students develop emotional well-being and a sense of place; develop resources for teachers; serves as the regional coordinator for Poetry Out Loud; and designs and delivers needs-based and culturally





Hawai'i Triennial 2025 artist Kahi Ching did a hands-on art making activity at the 2025 Hawai'i Regional Scholastic Art Awards ceremony at the State Art Museum. At the age of 17, Ching entered the 53rd Annual Hawai'i Regional Scholastic Art Awards competition and won several awards, including Best Portfolio.



SFCA partners with Hawai'i arts organizations to expand arts education opportunities outside of school. Here, a Honolulu Printmakers workshop introduced basic printmaking techniques to participants of all ages at the State Art Museum.



The SFCA and partners provide annual professional development opportunities for teaching artists on the SFCA Artistic Teaching Partners Roster. Artists on the roster work with SFCA educational programs, including Artists in the Schools.



2025 Hawai'i State Champion Koali'i Keawe-Asuega (Kamehameha Schools Kapālama) in the 2025 Poetry Out Loud: National Recitation Contest state level competition.

sustaining professional development opportunities for Hawai'i's teachers.

Additionally, the SFCA supports the collaboration of arts education organizations throughout the state by convening the ARTS FIRST Partners, an initiative established by the State Legislature in 2001.

"The most worthwhile aspect of the AITS residency for the participating classroom teachers was the opportunity to integrate

arts and culture into their curriculum in a hands-on, engaging way. It allowed teachers to see their students learning through movement, rhythm, and creative expression, often reaching students who don't typically shine in traditional academic settings. Watching the keiki light up with excitement, pride, and curiosity as they participated in drumming and dance made the experience truly meaningful for everyone involved." – **NOUVEAU NAUMU, VICE PRINCIPAL, ALAKA'I O KAUA'I PUBLIC CHARTER SCHOOL FINAL REPORT**



# **ARTS EDUCATION: Strengthening arts and culture in education for all ages and communities**

## **History and Context**

The Hawai'i State Foundation on Culture and the Arts (SFCA) was established in 1965 by the Hawai'i State Legislature as the state's official arts agency. From its inception, the SFCA has worked to enrich the lives of Hawai'i residents and visitors through diverse arts and cultural programming and initiatives.

The creation of the state arts agency was key to making Hawai'i eligible for federal grants from the National Endowment for the Arts, which was established on September 29, 1965, as part of the National Foundation on the Arts and Humanities.

The core of our mission is driven by a deep conviction in the transformative power of the arts. At the SFCA we believe that the arts are not a luxury; they are essential to a thriving society.

Audience at the HIFF 44 'Ōpio Student Showcase. SFCA provides public funding to Hawai'i organizations through grant programs.  
PHOTO CREDIT: HAWAII INTERNATIONAL FILM FESTIVAL



Over the next several years, the SFCA intends to:

- Scale specialized programs (e.g., HŌ'Ā, dementia-friendly tours, sensory-friendly hours for people with disabilities, oral history workshops with elders) that meet the needs of various populations, with appropriate training for museum staff and docents.
- Allocate resources for a comprehensive needs assessment or landscape study focused on the current state of arts education in Hawai'i, with the goal of better understanding what is abundant and what is missing in school and community spaces.
- Continue to align efforts with ARTS FIRST initiatives and partners, focusing on research, professional development, advocacy, and expanding awareness of the value of arts education.



Sensory-friendly immersive theater productions done in partnership with the Honolulu Theatre for Youth invite audience members to explore and interact with the sets, props, and performers.



As a site for Hawai'i Triennial 2025, the State Art Museum hosted exhibits, workshops, and tours with free admission.



Several weeks prior to the annual Art at the Capitol event, SFCA provides hands-on art making workshops for state legislators and legislative staff. In this photo, teaching artist Emily McIlroy discusses an artwork with Representative Jeanné Kapela.



Pālama Settlement Kūpuna Clay artist residency funded by the Museum Without Walls partnership with Hawai'i Community Foundation.  
PHOTO CREDIT: **RAYNA GALATI**



## ART IN PUBLIC PLACES

### Public Art Collection

The SFCA Art in Public Places Collection has over 7,000 works of art. On June 30, 2025, 00% of the collection was on display statewide in over 500 state government sites including public schools, university campuses, libraries, airports, hospitals, State office buildings, and the Hawai'i State Art Museum. Artworks enter the collection as commissions, purchases, or gifts.

The collection is managed by the SFCA for accountability, accessibility, preservation, and appropriate use. Please see Appendix A, Art in Public Places Program (page 29) for details on FY2025 purchases and gifts. Explore the collection online: [sfca.hawaii.gov/app-art](https://sfca.hawaii.gov/app-art).



## ART IN PUBLIC PLACES

### Commissioned Works of Art

An Art Advisory Committee is convened for each building or space selected for a permanent work of art. The AAC participates in every phase of discussion to ensure the work of art is relevant and accessible to the community where it is placed.

#### Dedicated

"Mānaiakalani" at Nānākuli Public Library, sculpture by Scott Fitzel.

A freestanding stainless steel and cast glass sculpture based on the legendary fishhook of Polynesian culture figure Māui. The imagery on the two flat sides are the

golden stars in the constellation Mānaiakalani, setting into the multi-hued blue waters of the coast of Nānākuli. At the top of the hook is the constellation Hina ia 'Ele'ele, representing the feminine counterpart to Māui and his perpetual pursuit of her through the sky. The sculpture is lit from within, allowing the glass to illuminate the story day and night.

By day Māui's fishhook reminds us of the lore of the creation of the Hawaiian Islands. When fishing with his brothers, Māui's hook instead pulls up the seafloor above the ocean's surface. The line then breaks and leaves the islands exposed. By night, Māui's hook can be seen in the sky as the constellation Mānaiakalani, as it leads the Milky Way across the sky and sets each summer in the waters off the coast of Nānākuli, on the west side of O'ahu.

The Nānākuli Public Library opened in April 2018 to serve the Nānākuli and Mā'ili communities. The library design was inspired by Hawaiian villages and includes an outdoor program area, meeting rooms, and a recording studio. Services include weekly keiki storytime sessions, 'ohana game nights, and computer classes.



"Mānaiakalani" by Scott Fitzel. Stainless steel and cast glass, 2024. Art in Public Places Collection of the State Foundation on Culture and the Arts.



Kanaka 'Ōiwi activist, educator, and artist Meleanna Aluli Meyer holding a sign reading "Art is not a line item. It's lifeblood."



Performance by 808 Breakers.



Taiko drumming by Kenny Endo Ensemble.



Hula by Miss Hawai'i 2024, Hayley Cheyney-Kāne.



Volunteers painting a lei-themed mural on construction barriers around the State Capitol building.



## ART AT THE CAPITOL 2025

The Hawai'i State Legislature invites the public to visit Capitol building offices and spaces to view and learn more about the SFCA Art in Public Places Collection artworks installed there during the annual Art at the Capitol event. This year, over 40 Capitol offices participated. With the theme "Kālena, the Talent of Hawai'i" the Friday, April 11, 2025 event featured:

- Self-guided tours
- Poetry reading by Hawai'i State Poet Laureate, Brandy Nālani McDougall
- Student performances by the Hawai'i Youth Symphony, Ballet Hawai'i, Ohana Arts, and 808 Breakers
- Honolulu Theatre for Youth
- Chado: the Way of Tea
- Hula by Miss Hawaii 2024, Hayley Cheyney-Kāne
- Taiko drumming with the Kenny Endo Ensemble
- Chess matches with the Hawai'i Chess Federation
- 'Ōhina Films showcase screenings of short films from across the islands
- Community mural painting with artist Solomon Enos

Sponsored by the Offices of Representative Jeanné Kapela and Senator Chris Lee.



## CAPITOL MODERN: The Hawai‘i State Art Museum

The State Art Museum is a powerful tool to maximize public art access and promote lifelong learning, and an educational teaching tool for students, teachers, visitors and the public. Supported by the Works of Art Special Fund, the museum is free for everyone and open Wednesday-Saturday 10 am – 4 pm, with evening hours during special museum events. Learn more about the museum online: [CapitolModern.org](https://CapitolModern.org).

Museum visitors in the National AIDS Memorial Quilt exhibit. All quilts on display were connected to Hawai‘i and on loan from the National AIDS Memorial Quilt.

### 2025 Exhibits on View

- “Hawai‘i Triennial 2025: ALOHA NŌ”  
February 15 – December 6, 2025
- National AIDS Memorial Quilt exhibit  
with Hawai‘i Health and Harm Reduction  
Center, December 2 – 17, 2024
- “2025 Hawai‘i Regional Scholastic Student  
Art Awards” March 1 – April 1, 2025
- “Botanical Rhapsody” with the Friends of  
Capitol Modern, May 5 – June 21, 2025
- “Hula Ki‘i Youth Exhibit” Hula Preservation  
Society, June 6 – July 31, 2025
- “Ke Ao Lama, Enlightened World”,  
celebrating traditional and contemporary  
expressions of Pacific Island nations  
through interconnected exhibitions  
highlighting the expanse of inspired  
Indigenous thought and creativity.



No. 1 Capitol  
District building,  
home to Capitol  
Modern and  
several state  
government  
offices.

- Pilina: my relationships are my heritage and wealth  
(June 7 – November 16, 2024)
- Our Sea of Islands (June 7 - November 16, 2024)
- Sculpture Lobby Ki‘i (June 7 – December 28, 2024)
- ‘Ai ā manō (June 7 – December 31, 2024)
- Nā Akua Ākea: The Vast and Numerous Deities  
(June 7, 2024 – January 4, 2025)
- Hula Ki‘i: Traditional Hawaiian Puppetry (June 7 –  
December 31, 2024)



# FY2025 STATE ART MUSEUM PROGRAM HIGHLIGHTS

As a part of the SFCA's Art in Public Places Program, the intention of the State Art Museum is to explore creative and dynamic ways to support artists and their diverse art forms. This is accomplished through public programming, museum education, and engagement. We are continuously evolving in becoming even more inclusionary and accessible to the needs of our community, as a welcoming space for creatives to collaborate, share and encourage one another in the arts.

- In fiscal year 2025, the museum held dozens of events, including First Fridays, Friday Night Tempos, Super Saturdays, and Hawai'i Triennial programming. Over 40 local artists and performers featured at these events.
- Number of Museum Attendees in FY2025
  - ▶ 60,481 visitors (including 64 school groups and 14 community groups)
  - ▶ 1,094 visitors to artist talks and presentations
  - ▶ 1,574 visitors to Super Saturday hands-on, family-oriented art activities
  - ▶ 14,124 visitors to First Friday all-ages evening events
  - ▶ 6,417 visitors to Friday Night Tempo all-ages evening events
  - ▶ 34 private party rentals
  - ▶ 25 government rentals



School group exploring the 2025 Hawai'i Triennial exhibit.

Design by Amos Kotomori in Friends of Capitol Modern's 2025 Mod Gala fashion show. Pieces from the fashion show were later displayed in the "Botanical Rhapsody" exhibit in the museum.

## Friends of the State Art Museum Artist Residency: Solomon Enos

Native Hawaiian artist and storyteller Solomon Enos continued to engage students and community members during his residency, which has included demonstrations of 3D printing, digital sculpting, virtual reality, and displays of sketches and works in progress. The museum was also one of the sites for community participation in creating the artwork that will be installed as the Hawai'i State Capitol's waterless pool (State Capitol Pools Project, page 8).

## Get Involved

Interested in teaching, performing, or doing a temporary installation at the State Art Museum? Application forms are available on the Capitol Modern website: [CapitolModern.org/get-involved](https://capitolmodern.org/get-involved)



# KING KAMEHAMEHA CELEBRATION COMMISSION

On December 22, 1871, King Kamehameha V proclaimed a national holiday to honor and celebrate his grandfather and the father of the Hawaiian Kingdom. Originally, the people of Hawai'i wanted to mark the legacy of Lot Kapūaiwa (Kamehameha V) on his birthday, December 11. Being the humble chief that he was, he opted to honor his grandfather instead and pushed the holiday as far away from his (Lot's) birthday as possible, hence the arbitrary date of June 11. Thus, June 11, 1872, was the very first Kamehameha Day holiday ever celebrated.

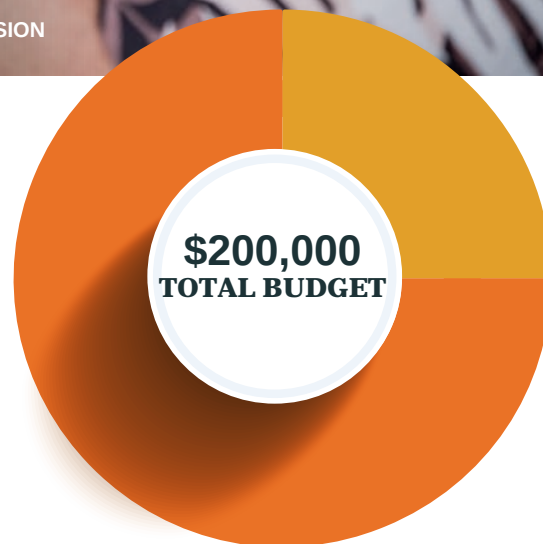
Volunteer stringing plumeria flowers into lei. The celebration is supported by dozens of volunteers.  
PHOTO CREDIT: KING KAMEHAMEHA CELEBRATION COMMISSION

## 2025 King Kamehameha Day Celebration

153rd Annual King Kamehameha Day theme: "E Ho'omau - Celebrating Mary Kawena Pukui"

Fourteen official events were held on Hawai'i Island, Kaua'i, Maui, Moloka'i, and O'ahu from June 7 – 14, 2025.

A list of official events on Hawai'i Island, Kaua'i, Maui, Moloka'i, and O'ahu is posted online at [KamehamehaDay.Hawaii.gov](http://KamehamehaDay.Hawaii.gov).



**\$50,000**

• State Foundation on Culture and the Arts (Art in Public Places Program)

**\$150,000**

• Hawai'i Tourism Authority (Community Enrichment Program)





## 2025 Board of Commissioners

- Royal Order of Kamehameha I: Kainoa Daines – Chair
- 'Ahahui Ka'ahumanu: Louise Alina
- Hale O Nā Ali'i: Ian Custino, Vice Chair
- Daughters & Sons of Hawaiian Warriors, Māmakakaua: Puake'ala Mann
- Daughters of Hawai'i: Kehaulani Keana'aina
- Association of Hawaiian Civic Clubs: Beverly Lee
- Kamehameha Schools Alumni Association: Jame Schaedel
- Kapahulu Music Club: Kimo Alama Keaulana
- Waimānalo Hawaiian Homestead Association: Leilani Kahoano
- Papakōlea Community Association: Vacant
- Island of Hawai'i: Desiree Moana Cruz
- Island of Maui: Moanike'ala Whittle-Wagner
- Island of Kaua'i: Kalei Hoffman
- Island of Moloka'i: Leinā'ala Lopez
- Island of Lāna'i: Pamela Alconcel
- Amy Hammond, Executive Director

King Kamehameha I statue in Honolulu adorned with lei.

PHOTO CREDIT: KING KAMEHAMEHA CELEBRATION COMMISSION

## Stay in Touch

Website: [KamehamehaDay.Hawaii.gov](http://KamehamehaDay.Hawaii.gov)

Email: [KKCC@hawaii.gov](mailto:KKCC@hawaii.gov)

Telephone: (808) 586-0333

Facebook: [@KingKamehamehaCelebration](https://www.facebook.com/KingKamehamehaCelebration)

Instagram: [@KingKamehamehaCelebration](https://www.instagram.com/KingKamehamehaCelebration)

Young men from the Papakōlea Community Association draping lei on the King Kamehameha I statue in Honolulu (2025).  
PHOTO CREDIT: KING KAMEHAMEHA CELEBRATION COMMISSION







# ARTS FIRST ANNUAL REPORT,

Fiscal Year 2025 (July 1, 2024 – June 30, 2025)

## About the ARTS FIRST Partners

In 1999, the Hawai'i State Legislature enacted ACT 80, which called for Hawai'i's major stakeholders in arts education to revise the State's Fine Arts standards and develop a statewide Strategic Plan for Arts Education. In 2001, ACT 306/01 passed into law (SFCA's HRS Chapter 9) formally naming the ARTS FIRST Partners and mandating the implementation of the Strategic Plan.

Current ARTS FIRST Partners include the State of Hawai'i Department of Education; Hawai'i Association of Independent Schools; College of Arts and Humanities - University of Hawai'i-Mānoa; College of Education - University of Hawai'i-Mānoa (UHM COE); East Hawai'i Cultural Center; Hana Arts Center; Hawai'i Arts Alliance; Hawai'i Open Arts (HŌ'Ā) Hawai'i Opera Theatre; Hawai'i State Foundation on Culture and the Arts (SFCA); Honolulu Museum of Art; Honolulu Theatre for Youth; Maui Arts & Cultural Center; Molokai Arts Center; Prince Dance Company, Storybook Theatre, and When We Shine.

Any not-for-profit arts education focused organization in Hawai'i is welcome to attend meetings.





2025 Teaching Artist Institute at the State Art Museum, May 1 – June 1, 2025. Hosted by the SFCA, Bartol Foundation, and Archive for Health, Arts & Spirit. Professional development for teaching artists, educators, and cultural workers across Hawai'i, to deepen trauma-informed, culturally grounded arts education through reflection, practice, and connection. Participants reflected on the experience with appreciation and increased confidence. "The Institute reminded me that we don't just teach. We heal."

## FY2025 Highlights and Accomplishments

- Initiated plan to create an arts education scan throughout Hawai'i.
- Developed subcommittees for ARTS FIRST – Research, Advocacy, Expanding Awareness and Professional Development so that members can focus on specific tasks and goals, collectively
- Hosted an ARTS FIRST Retreat in August 2024 at Hawai'i Community Foundation to develop year-long goals for each committee
  - Advocacy:
    - ▶ Started developing Arts Advocacy Toolkit
  - Professional Development
    - ▶ Committee: Developed an internal review for ARTS FIRST Professional Development proposals focusing on the National Core Arts Standards to distribute \$40,000 from Hawai'i Community Foundation.
    - ▶ State of Hawai'i Department of Education: Fine Arts Conference 2025 - open to Department Schools elementary and Fine Arts teachers (120). Focused on National Core Arts Standards alignment and arts integration.
  - Research
    - ▶ Supported initial phase of the data collection work.
    - ▶ Applied for a National Endowment for the Arts research grant to continue gathering data about Arts Education in Hawai'i.
  - Expanding Awareness
    - ▶ Partnered with Stevens World Peace Foundation to create and prepare for an ARTS Playground (Arts and Peace specific room) for the Schools of the Future Conference in October 2025.

## Arts First Partners 2021-2025 Strategic Plan Mission and Vision

**MISSION:** To collectively advance diverse, equitable and quality arts education in Hawai'i through advocacy and access.

**VISION:** A vibrant, arts-enriched learning culture in which

- Arts are diverse, equitable, and inclusive;
- The Arts are subjects in schools as well as integrated throughout subjects in schools; and
- Arts support community, community supports arts.



# SFCA FINANCIAL SUMMARY

Department of Accounting & General Services, State of Hawai'i  
Fiscal Year Ended June 30, 2025

## REVENUES

### STATE

General Fund Appropriation .....	\$ 1,085,556.00
Works of Art Special Fund (Expenditure Ceiling*).....	\$ 9,217,241.00
Bernice Pauahi Bishop Museum .....	\$7,500,000.00
Friends of the 'Iolani Palace .....	\$ 2,000,000.0

### FEDERAL

National Endowment for the Arts	
State Partnership Agreement .....	\$ 912,500

### PRIVATE CONTRIBUTIONS

Hawaii Community Foundation Donation to Artists in the Schools .....	\$ 260,000
--	------------

**TOTAL REVENUES.....\$ 20,975,297.00**

\*Actual Revenue to the Works of Art Special Fund.....\$ 11,745,144



## EXPENSES

<b>SFCA ADMINISTRATION.....</b>	<b>\$ 5,883,420.00</b>
Personnel .....	\$ 486,113.00
Operating .....	\$ 5,397,307.00
<b>PROGRAM GRANTS .....</b>	<b>\$ 1,946,918.00</b>
State .....	\$ 1,145,000.00
Federal – National Endowment for the Arts .....	\$ 801,918.00
Basic State Plan .....	\$ 613,453.00
Arts in Education .....	55,734.00
Underserved Communities .....	\$ 50,000.00
Poetry Out Loud .....	\$ 25,000.00
Folk Arts Partnership .....	57,731.00
<b>ART IN PUBLIC PLACES PROGRAM.....</b>	<b>\$ 7,088,569.00</b>
Art in Public Places Administration.....	\$ 7,088,569.00
Personnel .....	\$ 1,696,815.00
Operating .....	\$ 5,391,754.00
<b>TOTAL EXPENSES .....</b>	<b>\$ 14,918,907.00</b>

## EXCESS OF REVENUE OVER EXPENSES

### STATE

General Fund Lapsed .....	\$ 38,158.30
General Fund Lapsed due to Restrictions by Administration .....	\$ 1,058,555.60
Works of Art Special Fund Reversion.....	\$ 1,342,095.12
Works of Art Capital Improvement Project Fund .....	\$ 18,402,995.85
<i>(carryover from previous year, fund established prior to Works of Art Special Fund)</i>	



## APPENDIX A:

# Art in Public Places Program

The State Foundation on Culture and the Arts was established by the Hawai'i State Legislature in 1965 as the official arts agency of the State of Hawai'i. The concept of setting aside one percent of construction appropriations to provide a funding base for the acquisition of works of art set a national standard in 1967 when Hawai'i became the first state in the nation to pass such legislation.



## About the Works of Art Special Fund

The 1989 revision of the law created the Works of Art Special Fund, a non-lapsing account into which all funds set aside for works of art are deposited and from which expenditures for purposes consistent with Section 103-8.5, Hawai'i Revised Statutes, are made.

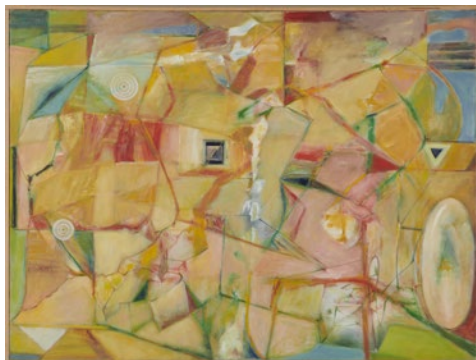
## Display

4,075 Relocatable Works of Art in over 500 sites and 323 Commissioned Works of Art were on display across the state at the beginning of FY2025.



The APP Collection online catalog can be accessed via the SFCA website, searchable by artist, title, material and more at [sfca.hawaii.gov/app-art](https://sfca.hawaii.gov/app-art).

"Complexity in Horizon #2" by Sanit Khewhok, oil on canvas painting, 2017. Art in Public Places Collection of the State Foundation on Culture and the Arts.



"Megan Godinez, Core surfer affectional known as "Aunty Megz," at her home break in Waikiki" by Ha'a Keaulana, digital photograph, 2022. Art in Public Places Collection of the State Foundation on Culture and the Arts.



"Ki'i Pohaku" by Harinani Orme, acrylic and pencil on watercolor paper painting, 2010. Art in Public Places Collection of the State Foundation on Culture and the Arts.

"Ki'i Pohaku Honu" by Harinani Orme, acrylic on paper painting, 2010. Art in Public Places Collection of the State Foundation on Culture and the Arts.





## APPENDIX A:

# Art in Public Places Program (cont.)

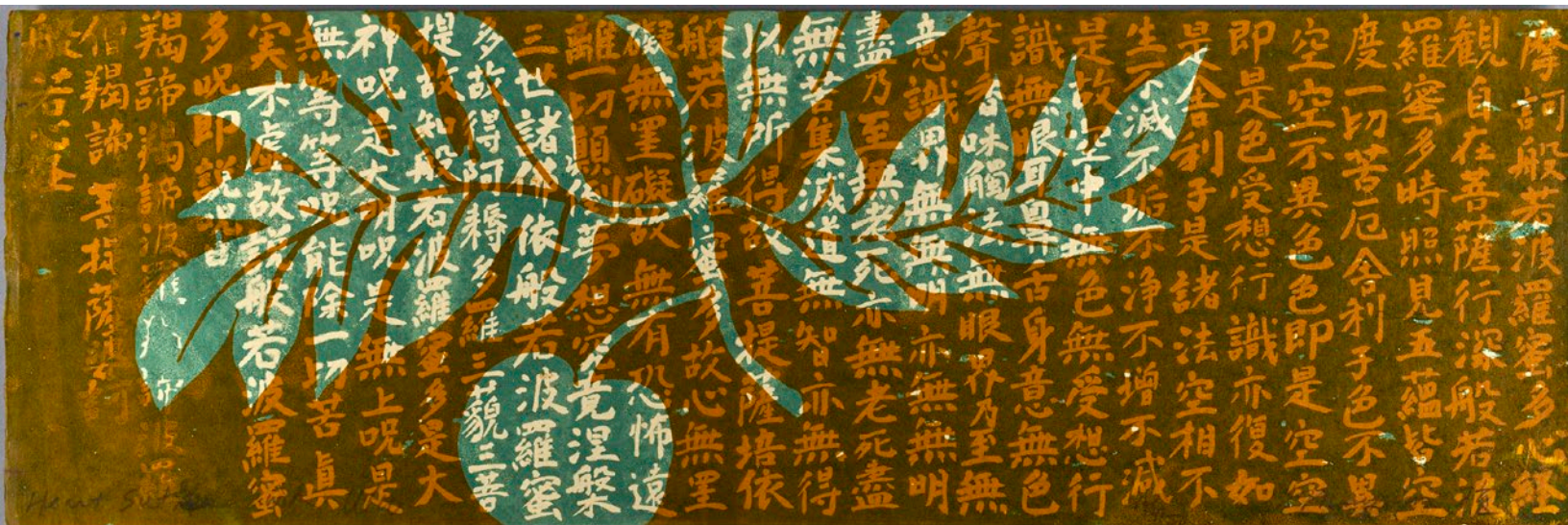
### FY2025 Art in Public Places Collection Purchases, Gifts, and Loans

The APP Program acquires works of art and commissions artists to create works of art for specific locations. These works of art are displayed in over 500 sites statewide.

Works of art are purchased through a community process where an Acquisition Award Selection Committee (AASC) is convened to select works of art for purchase from public galleries, studios of master artists, gifts, and other approved sources. The AASC follows selection criteria to recommend artwork to the SFCA Board of Commissioners for approval to purchase. This year, AASC's visited 29 exhibits on Hawai'i Island, Kaua'i, Maui, and O'ahu, and recommended 78 artworks for purchase (note: the number of nominations and purchases differ as the purchase date of an artwork may be in a different fiscal year than the nomination). For lists of approved exhibit visits and artwork purchases and gifts, please visit the SFCA website: [SFCA.Hawaii.gov/art-in-public-places-program](https://www.sfca.hawaii.gov/art-in-public-places-program). For more about how exhibit organizers can invite an AASC to an exhibit, please visit the SFCA website: [SFCA.Hawaii.gov/art-in-public-places-program/invite-committee](https://www.sfca.hawaii.gov/art-in-public-places-program/invite-committee).

### ARTISTS OF RELOCATABLE WORKS OF ART (PURCHASES APPROVED)

Satoru Abe, Husa Adams, Clayton Amemiya, Gwen Arkin, Jake Boggs, Kathy Chang, Ed Clapp, Rachelle Dang, Mary Downes, Tracy Dudley, Pierre Fichetfeux, Cyan Garma, Lorena Gheorghe, Kainoa Gruspe, Don Ed Hardy, Julie Houck, Claudia Johnson, Mark Kadota, Lisa Kasprzycki, Ha'a Keaulana, Sanit Khewhok, Codie King, Amos Kotomori, Anika Kuntze, Kalani Largusa and Dhehee Lee, Forest Leonard, Wayne Levin, Jennifer Lugris, Joan Luzney, Brooke Mahnken, Sarah Metz, Mary Mitsuda, Michael and Misato Mortara, Noreen Naughton, Mayumi Oda, Tomoko Ouchi, Stephanie Ross and Hugh Jenkins, Joseph Ruesing, Marie Eriel Sagrado, Shawn Spangler, Sue Tanaka, Shuzo Uemoto, Chiho Ushio, Christine Valles.



"Heart Sutra with Ulu" by Mayumi Oda, print on paper, 2008. Art in Public Places Collection of the State Foundation on Culture and the Arts.



## APPENDIX A:

# Art in Public Places Program (cont.)

### GIFTS

Over 15% of the Art in Public Places Collection artworks were gifted to the State of Hawai'i. In FY2025, 0 gifts were received.

### NON-STATE LOANS

136 artworks were loaned to 10 display locations in FY2025. Non-state loan requests are reviewed and approved by the SFCA Board of Commissioners.

Display locations included exhibits at the Downtown Art Center, 'Iolani Gallery at Windward Community College, the Honolulu Museum of Art, Noguchi Museum, Cranbrook Art Museum, and the Museum of Fine Arts Houston. A full list of the artworks, exhibits, and locations is on the SFCA website: [Art in Public Places: FY2025 Non-State Loans](#)

## ART IN PUBLIC PLACES PROGRAM CONTRACTS

### ARTWORK DOCUMENTATION AND MAINTENANCE

- JBC Engineering and Construction, LLC. Artificial turf installation at "Spirit of Lili'uokalani" statue. \$13,940.
- Chris Rohrer Photography. Artwork documentation. \$33,000.

### COMMISSIONED WORKS OF ART (ENCUMBERED)

- Artist: Wooden Wave (Matthew and Roxanne Ortiz). Project: Wahiawā Civic Center commissioned work of art. \$123,000.
- Artist: Solomon Enos. Project: State Capitol Pools at the Hawai'i State Capitol. \$140,000.

### STATE ART MUSEUM

- AI Media, Public Programs Coordinator. \$306,877.
- AI Media, 2025 Hawai'i Regional Scholastic Student Art Awards Logistics Coordination. \$36,430.33.
- DTL, Capitol Modern social media management. \$94,240.80.
- The LVRG Group, event photography and videography. \$136,297.86.
- Complete Tent Rental, tents and event rentals. \$119,581.23.

### HAWAII STATE POET LAUREATE

Brandy Nalani McDougall, poet laureate fellowship, \$15,000.



"Ki'i Pohaku Wa'a" by Harinani Orme, acrylic on paper painting, 2010. Art in Public Places Collection of the State Foundation on Culture and the Arts.



## APPENDIX B:

# Grants and Community Program Contracts

### Folk and Traditional Arts

The SFCA Folk and Traditional Arts program supports advanced sustained training and mentoring of next-generation cultural practitioners, especially cultural practitioner teachers, in order to build cultural capacity of living cultures in Hawai'i.

- **Hawai'i Alliance for Arts Education**, Folk and Traditional Arts Program Support, \$50,400.

Learn more about the program on the SFCA website: [SFCA.Hawaii.gov/FTA](https://sfca.hawaii.gov/FTA)

### Hawai'i State Legislature Special Purpose Appropriation

Administered by the SFCA.

- **Bishop Museum**, operating support, \$6,750,000
- **Friends of 'Iolani Palace**, operating support, \$1,800,000

### SFCA Outreach Initiative Program

- **University of Hawai'i**, Statewide Presenting and Touring - Statewide Cultural Extension Program (SCEP), \$50,000.00

### State Foundation on Culture and the Arts Operational Contracts

- **aio media**, FY2024 Annual Report design and printing, \$9319.36



Hawai'i Youth Symphony performer at 2025 Art at the Capitol event.



## APPENDIX B:

# Grants and Community Program Contracts (cont.)

### Biennium Grants

The SFCA provides public funds to Hawai'i nonprofit 501(c)3 arts and culture organizations through Biennium Grants to support projects designed to promote, perpetuate, and preserve culture and the arts in Hawai'i. Funding categories are Presenting and Performing Arts, Heritage and Preservation, Arts Education, and Community Arts. Grants are funded in the amounts of \$5,000, \$10,000, and \$15,000. Organizations are located statewide, and many include Neighbor Islands in their program outreach.

Grant Review Panels consisting of professionals with backgrounds in the arts and culture sector review and score submitted applications based on their proposed activities (50%), qualifications (25%), and the need, benefit, impact, and good use of public funds (25%). Panelists are volunteers and do not receive compensation.

The Biennium Grants Program follows Hawai'i Chapters 3-92 and 3-93 HRS concerning panel and application administration, including Chapter 9-11 for applicant eligibility purposes.



Honolulu Printmakers  
"printer lei" workshop.  
PHOTO CREDIT:  
HONOLULU PRINTMAKERS

### Biennium Grants FY2025

#### HAWAI'I ISLAND

- **Aloha Performing Arts Company dba Aloha Theatre**, Aloha Teen Theatre, \$10,000
- **East Hawai'i Cultural Council DBA East Hawai'i Cultural Center**, Gallery Exhibitions, \$15,000
- **Hawai'i Concert Society**, Hawaii Concert Society Season 2023-2024, \$10,000
- **Hawaii Forest Institute**, 2024 Hawaii's Woodshow, Na Lā'au o Hawai'i, \$10,000
- **Hilo Education Arts Repertory Theatre Company (HEART)**, I HEART Summer 2025 – A Zero to Low Cost Performing Arts Summer Camp, \$15,000
- **Holualoa Foundation for Arts & Culture d.b.a. Donkey Mill Art Center**, Donkey Mill Art Center Exhibition Program 2024-2025, \$15,000
- **West Hawai'i Dance Theatre**, West Hawai'i Dance Theatre Basic Performance Project, \$15,000



## APPENDIX B:

# Grants and Community Program Contracts (cont.)

### KAUA'I

- **Arts Kauai/Kauai Songwriters**, Kauai Songwriters Music Festival, \$15,000
- **Garden Island Arts Council**, Kaua'i Community Arts Basic Development, \$15,000

### LANA'I

- **Lanai Academy of Performing Arts Inc.**, LAPA FY25, \$10,000

### MAUI

- **Alexander Academy Performing Company**, The Nutcracker 2024, \$15,000
- **Hana Arts**, Strengthening the East Maui Community through Art, \$15,000
- **Hui No'eau**, Enhancing Lives on Maui through Visual Arts Education, \$15,000
- **Lahaina Arts Guild**, We Make Art Happen!, \$15,000
- **Maui Academy of Performing Arts**, The Living Room Theatre Project, \$15,000
- **Maui Classical Music Festival**, 43rd Annual Maui Classical Music Festival, \$15,000
- **Maui Pops Orchestra**, Maui Pops Orchestra 2024/2025 Concert Season, \$15,000
- **Maui Public Art Corps**, Hui Mo'olelo, \$15,000
- **When We Shine Foundation**, Our Kūpuna and the 'Āina, \$15,000



## APPENDIX B:

# Grants and Community Program Contracts (cont.)

### O'AHU

- **Ballet Hawai'i**, Angel Program FY2025, \$10,000
- **Bamboo Ridge Press**, Bamboo Ridge Basic FY25, \$15,000
- **Hawai'i Council for the Humanities**, Hawai'i History Day 2024-2025, \$15,000
- **Hawai'i Craftsmen**, Hawaii Craftsmen Exhibition Programs, \$10,000
- **Hawai'i Handweavers' Hui**, Tablet Weaving Basics and Beyond with John Mullarkey, \$5,000
- **Hawai'i Institute for Music Enrichment and Learning Experiences, Inc.**, Hawaiian Steel Guitar Festivals and Showcases, \$15,000
- **Hawai'i International Film Festival**, 44th Annual Hawai'i International Film Festival, \$15,000
- **Hawai'i Opera Theatre**, Hawai'i Opera Theatre - Education Programs, \$15,000
- **Hawaii Performing Arts Company, Ltd. d.b.a. Manoa Valley Theatre**, Production Support of MVT's 2024-2025 Theatre Season, \$15,000
- **Hawaii Quilt Guild**, 2025 Quilt Show, \$5,000
- **Hawaii Theatre Center**, pARTners for the Arts 2024 – 2025, \$15,000
- **Hawaii Youth Opera Chorus**, Music Education and Performance on O'ahu, emphasizing Hawaiian culture, \$15,000
- **Honolulu Printmakers**, Annual Juried Print Exhibition, \$10,000
- **Honolulu Theatre for Youth**, HTY's Statewide Tour FY25, \$15,000
- **Hula Preservation Society**, Wai Ola: Aukele and the Waters of Life, a Celebration of Hula Ki'i, \$15,000



Ballet Hawai'i student performing at 2025 Art at the Capitol event.

- **Japanese Cultural Center of Hawaii**, Fostering Cultural Awareness through Storytelling for the Classroom, \$10,000
- **Kumu Kahua Theatre**, Kumu Kahua Theatre's 54th Season, \$15,000
- **Mana Maoli**, Mana Mele Knowledge Resource Products, \$15,000
- **Mānoa Heritage Center**, Ma Ka Hana Ka Ike 'Learn by Doing' workshops, \$15,000
- **Oahu Choral Society**, Oahu Choral Society Basic Proposal 2024-2025, \$15,000
- **Sounding Joy Music Therapy, Inc.**, Music Connects: Engaging and Empowering Older Adults through Music Therapy, \$15,000
- **TAG – The Actor's Group**, August Wilson's Pittsburgh Cycle, \$15,000
- **Tau Dance Theater**, Kōkua, \$15,000
- **YOUNG OF HEART WORKSHOP dba Pu'uhonua Society**, Keanahala: A Place for Hala, \$15,000



APPENDIX B:

# Grants and Community Program Contracts (cont.)

**Hawai'i State  
Legislature  
Grant-In-Aid 2024**

Administered by the SFCA

**HAWAI'I ISLAND**

- **Hawaii Keiki Museum,**  
Operating Costs, \$179,000

**LĀNA'I**

- **Lanai Academy of  
Performing Arts, Inc.,**  
Operating Costs, \$20,000

**O'AHU**

- **Downtown Art Center,**  
Operating Costs, \$75,000
- **Dream Cultivators Hawaii,**  
Operating Costs, \$66,000
- **Kahuli Leo Lea,** Operating  
Costs, \$75,000

**Arts Education  
Contracts**

- **Hawaii Alliance for  
Arts Education,** Artists  
in the Schools Program  
Administrative Support,  
\$728,515
- **Honolulu Theatre for  
Youth,** Teaching Artist  
Institute, \$45,000
- **SMS Research,** Initial  
Landscape of Arts  
Education in Hawai'i  
Research Project,  
\$8,734.46
- **Honolulu Theatre for  
Youth,** Poetry Out Loud,  
\$25,000
- **Archive for Health, Arts  
& Spirit,** Teaching Artist  
Framework of Integrity,  
\$2,000

**Museum Without  
Walls**

Museum Without Walls Education Initiative is a partnership of the Hawai'i Community Foundation and the SFCA, a grant program focused on increasing access to arts education in Hawai'i.

Ten grants totalling \$72,828.17 awarded in FY2024 supported programs that included the first two quarters of FY2025.

Read more about the programs supported and Museum Without Walls on the Hawai'i Community Foundation website:

**[HawaiiCommunityFoundation.org/strengthening/museum-without-walls](https://hawaiicommunityfoundation.org/strengthening/museum-without-walls)**.



Wai'anae Elementary School students in the Hawai'i Open Arts program at Nānākuli Muliwai, learning how to draw realistic illustrations of plants and animals found in the muliwai.

## APPENDIX C: SCHOOLS SERVED

This list includes schools served by SFCA arts education programs, community programs supported by SFCA funding, and schools that participated in student art competitions and exhibitions at the State Art Museum.

### Hawai'i Island

#### SCHOOL DISTRICT: HAWAI'I

Connections PCS  
Ernest Bowen DeSilva Elementary School  
Ha'aheo Elementary School  
Hawai'i Preparatory Academy\*  
Hawai'i Technology Academy, Kona PCS  
Hilo Intermediate School  
Hilo Union Elementary School  
Hilo High School  
Hōnaunau Elementary School  
Hōlualoa Elementary School  
Honoka'a High & Intermediate School  
Innovations PCS  
Kamehameha School-Hawai'i Campus\*

Kanu o ka 'Āina New Century PCS  
Ka'ū High & Pāhala Elementary  
Kea'au Elementary School  
Kea'au High School  
Kea'au Middle School  
Kealakehe Elementary School  
Kealakehe High School  
Keonepoko Elementary School  
Kohala Middle School  
Konawaena Elementary School  
Konawaena High School  
Kua O Ka Lā New Century PCS  
Laupāhoehoe Community - PCS  
Mountain View Elementary School  
Pa'auilo Elem. and Inter School



## APPENDIX C:

# Schools Served (cont.)

Pāhoa Elementary School  
Pāhoa High & Intermediate School  
Parker School\*  
Prince Jonah Kūhiō Kalanianaʻole  
Elementary School  
Volcano School of Arts and Sciences PCS  
Waiākea High School  
Waiākea Intermediate School  
Waikoloa Elementary and Middle School  
Waimea Elementary School  
Waimea Middle School

### Kauaʻi

#### SCHOOL DISTRICT: KAUAʻI

Hanalei Elementary School  
Hawaiʻi Technology Academy – Līhuʻe  
Campus  
Island School\*  
Kanuikapono PCS  
Kapaʻa Middle School  
Kapaʻa High School  
Kauaʻi High School  
Kawaikini New Century PCS  
Kīlauea Elementary School  
Waimea High School

### Lānaʻi

#### SCHOOL DISTRICT: MAUI

Lānaʻi High & Elementary School



Visitor in the 2025  
Hawaiʻi Regional  
Scholastic Student Art  
Awards exhibit at the  
State Art Museum.

### Maui

#### SCHOOL DISTRICT: MAUI

Haʻikū Elementary School  
Hāna Elementary School  
Hawaiʻi Technology Academy, Kihei PCS  
Henry Perrine Baldwin High School  
ʻĪao Intermediate School  
Kamaliʻi Elementary School  
Kamehameha Schools Maui\*  
Kīhei Charter School  
Kīhei Elementary School  
King Kekaulike High School  
Kula Elementary School  
Kūlanihākoʻi High School  
Lihikai Elementary School  
Lokelani Intermediate School  
Makawao Elementary School  
Maui High School  
Pāiʻa Elementary School  
Pōmaikaʻi Elementary School  
Princess Nāhiʻenaʻena Elementary School  
Pukalani Elementary School  
Puʻu Kukui Elementary School  
Seabury Hall School\*  
Wailuku Elementary School



## APPENDIX C: Schools Served (cont.)

### Molokaʻi

#### SCHOOL DISTRICT: MAUI

Kaunakakai Elementary  
Kilohana Elementary  
Maunaloa Elementary

### Oʻahu

Admiral Arthur W. Radford High School  
ʻAiea Intermediate School  
Ala Wai Elementary School  
Āliamanu Elementary School  
Asia Pacific International School\*  
Damien Memorial School\*  
Enchanted Lake Elementary School  
ʻEwa Makai Middle School  
Governor Wallace R. Farrington High School  
Hahaione Elementary School

Haleiwa Elementary School  
Hanalani Schools - Upper School\*  
Hawaiʻi Baptist Academy\*  
Hawaiʻi School for the Deaf and the Blind  
Hawaiʻi Technology Academy PCS  
Henry J. Kaiser High School  
Highlands Intermediate School  
Hōkūlani Elementary School  
ʻIolani School\*  
Island Pacific Academy\*  
James B. Castle High School  
James Campbell High School  
Kaʻaʻawa Elementary School  
Kaʻala Elementary School  
Kaʻelepulu Elementary School  
Kailua High School  
Kaimuki Christian School\*

View of the 2025  
Hawaiʻi Regional  
Scholastic Student Art  
Awards exhibit at the  
State Art Museum.







## APPENDIX C: Schools Served (cont.)

Waiāhole Elementary students in the Hawai'i Open Arts program at Paepae o He'eia, developing observation skills.


Kaimukī Middle School  
Kalāheo Elementary School  
Kalāheo High School  
Kalani High School  
Kalihi Elementary School  
Kamaile Academy PCS  
Kamalani Academy PCS  
Kamehameha Schools  
Kamehameha Schools Kapalama  
Kamilo'iki Elementary School  
Ka'ōhao PCS  
Kapolei High School  
Ke Kula 'o Samuel M. Kamakau Laboratory  
PCS

King Liholiho Elementary School  
La Pietra-Hawaii School For Girls\*  
Lanakila Elementary School  
Le Jardin Academy\*  
Leilehua High School  
Linapuni Elementary School  
Makakilo Elementary School  
Mālama Honua PCS  
Mānoa Elementary School  
Maryknoll High School\*  
Mauka Lani Elementary School  
Maunawili Elementary School  
Mid-Pacific Institute\*



## APPENDIX C: Schools Served (cont.)

Mililani High School  
Mililani Middle School  
Mililani Uka Elementary School  
Moanalua High School  
Moanalua Middle School  
Moanalua Middle School  
Nānākuli Elementary School  
Niu Valley Middle School  
Nu‘uanu Elementary School  
Pacific Buddhist Academy\*  
Pālolo Elementary School  
Pearl City High School  
Pearl City Highlands Elementary School  
President Abraham Lincoln Elementary School  
President George Washington Middle School  
President Theodore Roosevelt High School  
President William McKinley High School  
Prince Jonah Kūhiō Elementary School  
Princess Miriam K. Likelike Elementary School  
Punahou Schools\*  
Queen Ka‘ahumanu Elementary School  
Red Hill Elementary School  
Robert Louis Stevenson Middle School  
Salt Lake Elementary School  
SEEQS: the School for Examining Essential Questions of Sustainability PCS  
St Andrew's Schools\*  
University Laboratory School PCS  
Voyager Public Charter School  
Waiāhole Elementary School



Museum visitors in the 2025 Hawai'i Regional Scholastic Student Art Awards exhibit at the State Art Museum.

Wai‘alae Public Charter School  
Waialua Elementary School  
Waialua High & Intermediate School  
Wai‘anae Elementary School  
Waiau Elementary School  
Waikīkī Elementary School  
Waipahu High School

**PCS = PUBLIC CHARTER SCHOOL**

**\*NON-DEPARTMENT OF EDUCATION SCHOOLS**



# UPDATES AND HIGHLIGHTS FROM FY2025

## Hawai'i State Poet Laureate 2022-2025 Brandy Nālani McDougall to conclude term with Hawai'i State Public Library event in February 2026

The Hawai'i State Public Library main branch will be holding an event to mahalo Dr. Brandy Nālani McDougall for her three-year term as Hawai'i State Poet Laureate. The event, to be held in February 2026, will also welcome the 2026-2029 Hawai'i State Poet Laureate.

State Poet Laureate Dr. Brandy Nalani McDougall reading at the 2023 Art at the Capitol event. Dr. McDougall is standing on the "Aquarius" mosaic by Tadashi Sato (SFCA Art in Public Places Collection) in the State Capitol Rotunda.

## SFCA Art in Public Places Collection acquires sculpture by Native Hawaiian Master carver Rocky Ka'iouliokahihikolo'ehu Jensen

Nominated by an SFCA Art Acquisition Selection Committee (AASC) in FY2025 from the 2025 Hawai'i Triennial exhibit at the East Hawai'i Cultural Center in Hilo, "Kanaloa" by Rocky Ka'iouliokahihikolo'ehu Jensen was officially purchased by the SFCA in FY2026.



(ABOVE) "Kanaloa" by Rocky Ka'iouliokahihikolo'ehu Jensen, koa wood sculpture, 1994. Art in Public Places Collection of the State Foundation on Culture and the Arts.

(LEFT) "Kanaloa" koa wood carving by Rocky Ka'iouliokahihikolo'ehu Jensen being photo-documented by contractor Chris Rohrer. SFCA Art in Public Places Program art installer José González assists.



Governor Josh Green adds his contribution to the community mural as artist Solomon Enos looks on.

## State Capitol Pools Project community murals become artwork for upcoming installation

The State Capitol waterless pool project artwork has been completed and installation of the finished tiles has begun. Hundreds of community members and State Art Museum visitors contributed to the final artwork.





# SFCA STAFF

July 1, 2024 – June 30, 2025

## Department of Accounting and General Services

Keith A. Regan, Comptroller

Meoh-Leng Silliman, Deputy Comptroller

## State Foundation on Culture and the Arts

### ADMINISTRATION

Karen Ewald, Executive Director

Rhiannon Keene, Secretary

### SUPPORT SERVICES

Mamiko K. Carroll, Information Specialist

Nassir Sheik, Accountant

Seema Sueko-Low, Accountant

Seema Sueko-Low, Administrative Services Assistant

### ART IN PUBLIC PLACES

Kamakani Konia, Director, Hawai'i State Art Museum and Art in Public Places Program

Nathan Balcombe, Exhibit Specialist

Elizabeth Baxter, Curator

Kathleen Bejado, Registrar

Derek Erwin, Conservation Coordinator

José De Jesus González, Exhibit Specialist

K. Teig Grennan, Senior Exhibit Specialist

Shirley Lam, Museum Education Coordinator

Peter Powlison, Exhibit Specialist

Alexandra Skees, Project Manager

Rodney Acosta, Visitor Services Manager

### DESIGNATED PROGRAMS

Yvonne Manipon, Arts Program Specialist

Brittany Rakowitz, Arts Program Specialist

Danica "Nikki" Rosengren, Arts Program Specialist

### FY2024-2025 ANNUAL REPORT

Mamiko K. Carroll, Editor

Trade Media Hui, Designer

Trade Media Hui, Printer

### PHOTO CREDITS

All photos copyright State Foundation on Culture and the Arts unless otherwise noted.



"Kalo 2" by Meaaloha Bishop, oil on canvas painting, 2024. Art in Public Places Collection of the State Foundation on Culture and the Arts.







# Art Is... a Community's Voice at The Capitol

A series of community-created signs and posters supporting arts in Hawai'i were displayed in the Downtown Art Center gallery June 2 – 29, 2025. Part of an arts advocacy project led by the Hawai'i Arts Alliance and with the assistance of Maile Meyer and Meleanna Meyer, community members responded to the prompt "Art is..." and created signs with their own expressions. The signs were then carried to the Hawai'i State Capitol for the annual Art at the Capitol event on April 11, 2025, in a peaceful demonstration of unity, purpose, and love for the arts.

Artists, educators, and advocates come together to celebrate art at the Hawai'i State Capitol.



## HAWAII

STATE FOUNDATION on  
CULTURE and the ARTS

Department of Accounting and General Services, State of Hawai'i  
Hawai'i State Foundation on Culture and the Arts  
250 South Hotel St, Second Floor, Honolulu HI 96813  
Telephone: (808) 586-0300  
Fax: (808) 586-0308

HawaiiSFCA@hawaii.gov / info@capitolmodern.org  
Website: sfca.hawaii.gov / CapitolModern.org

Facebook: @HawaiiSFCA / @CapitolModern  
Instagram: @Hawaii\_SFCA / @CapitolModern

Get the latest news: [www.sfca.hawaii.gov/news](http://www.sfca.hawaii.gov/news)  
Explore the SFCA Art in Public Places Collection online:  
[www.sfca.hawaii.gov/app-art](http://www.sfca.hawaii.gov/app-art)

