

STATE FOUNDATION ON CULTURE AND THE ARTS
General Board Committee Meeting Agenda
Friday, May 15, 2026
11:00 am

Physical Meeting Location:
250 South Hotel Street, Honolulu, Hawai'i 96813
Multipurpose Resource Room, First Floor

Remote Meeting Location:
Video Conference via Zoom
<https://us06web.zoom.us/j/84755752819?pwd=7RHeVI9909aAYXSiYq1k8cihwTcBJJ.1>

Meeting ID: 847 5575 2819
Passcode: 451228
Dial by Location:
+1 206 337 9723 US (Seattle) or +1 213 338 8477 US (Los Angeles)
Meeting ID: 830 5836 2601
Passcode: 710416

The meeting will be held using interactive conference technology under Section 92-3.7, Hawaii Revised Statutes (“HRS”). Commissioners, staff, testifiers, and the public can choose to participate in person or online via Zoom. The public may also view the live meeting via its Zoom link at **<https://us06web.zoom.us/j/84755752819?pwd=7RHeVI9909aAYXSiYq1k8cihwTcBJJ.1>**

If you are having difficulty connecting to the meeting, please contact Kamakani Konia at (808) 586-0300.

To Provide Written Testimony

We encourage interested persons to submit written testimony in advance of the meeting, which will be distributed to Commissioners prior to the meeting and allow a timely review. Please submit written testimony via email to kamakani.p.konia@hawaii.gov

Written testimonies can also be mailed to:

Kamakani Konia
State Foundation on Culture and the Arts
250 South Hotel Street, 2nd Floor
Honolulu, Hawai'i 96813

Written testimonies may be posted upon the State Foundation on Culture and the Arts meeting website. As a precaution, please be mindful of any personal information that may be contained in your testimony prior to submitting it unless you intend for it to be shared. Late written testimony will be retained as part of the record and distributed to Commissioners as soon as practicable, but we cannot ensure that the Commissioners will receive it in sufficient time to review, prior to decision-making.

To Provide In-Person Oral Testimony

Attend in-person at:
State Foundation on Culture and the Arts

If you require special assistance or auxiliary aids and/or services to participate in the subject public meeting, please contact Kamakani Konia for the State Foundation on Culture and the Arts, at kamakani.p.konia@hawaii.gov or (808)586-0300 as soon as possible. Requests made as early as possible have a greater likelihood of being fulfilled. Upon request, this notice is available in alternate/accessible formats.

250 South Hotel Street
Multipurpose Resource Room, First Floor
Honolulu, Hawai'i 96813

To Provide Testimony by Telephone

Individuals interested in signing up to provide oral testimony at the meeting may submit their name, e-mail address, and telephone number to kamakani.p.konia@hawaii.gov. On the day of the meeting at the start of the agenda item you wish to testify on, dial the above listed telephone number (Zoom); input the meeting ID: 830 5836 2601 and the passcode: 710416, and follow the prompts.

To Provide Video/Zoom Testimony

Please send your request in a timely manner to kamakani.p.konia@hawaii.gov with your name, email address, telephone number, and agenda item you wish to testify on. Once your request has been received, you will receive a confirmation email with pertinent information. You may testify without signing up in advance.

AGENDA

1. Call to Order
2. Roll Call and Determination of Quorum
3. Approval of March 6, 2026 Meeting Minutes
4. Public Testimony on Agendized Items
Public testimony on any item relevant to this agenda may be taken at this time, or a testifier may wait to testify when the agenda item is called for in discussion. Pursuant to Section 92-3, HRS, the Chair of the Commission has the authority to impose reasonable conditions to ensure an orderly and efficient meeting. Testimony presented during the meeting will be limited to three minutes each. Agenda items may be taken out of order.
5. **Items for Discussion, Consideration, and Action**
 - a. **Executive Director Report Legislative Session; Strategic Plan, Personnel and Art in Public Places Survey Initiative, Commission Changes, and Commission Committee Updates**
 - b. **Approval of the fiscal year 2027 Community Arts Grant Recommendations**
 - c. **Approval of Gift/Purchase Recommendations for the Art in Public Places Collection**
 - d. **Approval of the Visitation Schedule for Recommendations for Art Acquisition Selection Committees**
 - e. **Contract Amendment for Capitol Pools Project**
6. Announcements
7. Adjournment

In the event that audiovisual communication cannot be maintained by all participating Commissioners and quorum is lost, the meeting will automatically be recessed for 30 minutes, during which time an attempt to restore audiovisual communication will be made. If such attempt to restore is unsuccessful within said 30 minutes, all board members, members of the public, staff and other interested individuals shall log on again to the Zoom link on this Notice, whereby audio communication will be established for all participants and the meeting will continue. If reconvening the meeting is not possible because audio and visual communication cannot be re-established, the meeting will be terminated.

If you require special assistance or auxiliary aids and/or services to participate in the subject public meeting, please contact Kamakani Konia for the State Foundation on Culture and the Arts, at kamakani.p.konia@hawaii.gov or (808)586-0300 as soon as possible. Requests made as early as possible have a greater likelihood of being fulfilled. Upon request, this notice is available in alternate/accessible formats.

STATE FOUNDATION ON CULTURE AND THE ARTS

General Board Committee Meeting Agenda

Friday, March 6, 2026

11:00 am

Physical Meeting Location

250 South Hotel Street, Honolulu HI 96813

Multipurpose Resource Room, First Floor

MINUTES

Members Present

Konrad Ng, Chairperson, Janet Sato, Maui, Randall Fujiki, At-Large; Michael Marshall, Hawaii Island, Randall Francisco, Kauai. Susana Browne, At-Large, Sean Connelly, At-Large

Member Absent

Jill Kuramoto, At-Large, Marcia Roberts-Deutsch, At-Large

SFCA Staff Present

Karen Ewald, Executive Director; Elizabeth Baxter, Curator, Kamakani Konia, Art in Public Places Director,

Others Present

None

1. Call to Order

Konrad Ng, Chairperson called the meeting to order at 11:05 am

2. Roll Call and Determination of Quorum

Karen Ewald called the determination of quorum. All Commissioners were present, except for Jill Kuramoto and Marcia Roberts-Deutsch

3. Approval of Minutes of the Previous Meeting held on March 6, 2026

A motion to approve the Minutes of the last General Board committee meeting held on March 6, 2026 as amended was made by Robert Francisco and seconded by Randall Fujiki. The motion to approve the minutes was approved unanimously.

4. Public Testimony on Agendized Items

Konrad Ng called for any public testimony. There were no public testimonies.

5. Approval of Gift/Purchase Recommendations for the Art in Public Places Collection

Kauai Society of Artists, Kukui Grove Center, "Art Kaua'i 2025," juried exhibition

(September 12, 2025 - October 24, 2025)

AASC VACS: Carol Yotsuda, Wayne Miyata, Sally French

SFCA: Eli Baxter

1. DEAN, Jeremy. 6087-26 "(In) Divisible"

single unwoven American flag, 3,500 needles, 2023, 24 x 38"

\$24,000.00

2. OUCHI, Tomoko. 6088-26 "Waiting for Harry"

acrylic, 2025, 40" x 60"
\$6,000.00

3. WOOLWAY, Pam. 6089-26 "Lighten Up"
clay, 2024, 6.5 x 8"
\$525.00

4. YASUTAKE, Kobi. 6090-26 "33 Teachers"
mixed media, 2025, 30 x 22"
\$2,500.00

The motion to approve the purchases was done by Janet Sato and seconded by Randall Francisco. The motion was unanimously approved by the full board.

Donkey Mill Art Center, "Rhythms of Resonance: Explorations in Collaborative Ceramics," curated exhibition (August 23, 2025 - October 11, 2025)

Sherm Warner, Leslie Steinwachs, Margo Ray, Hiroki Morinoue, Wayne Levin
SFCA: Eli Baxter

1. AGUIRRE, Amber JACOBSON, Kate JACOBSON, Will. 6102-26 "No Space for Tyranny" ceramic, 2025, 10.5 x 42 x 27.5"
\$6,800.00

2. WATANABE-MORINOUE, Setsuko NAKAZATO, Tomoko. 6103-26 "Shu, Ha, Ri"
ceramic, glazes and paper, 2025, 21.5 x 37 x 2.25"
\$4,500.00

3. HAGEN, Kimberly SMITH, Shelby. 6104-26 "Introspection"
porcelain, steel wire, ceramic pigments, wood, adhesive, 2025, 8 x 19 x 5.5"
\$1,800.00

4. BACKUS, Jill WHEELER, Dave. 6105-26 "I got you"
ceramic, stoneware, underglazes, 2025, 21 x 14 x 12"
\$3,800.00

The motion to approve the purchases was done by Susana Browne and seconded by Randall Francisco. The motion was unanimously approved by the full board

Kahilu Theatre, "Ma kāhi o ka hana ola ma laila: Textiles of Moku o Keawe," curated exhibition (September 27, 2025 - November 2, 2025)

AASC VACS: Sherm Warner, Margo Ray, Mary Begier
SFCA COMM: Michael Marshall
SFCA: Eli Baxter

1. FISHER-FORESTER, Puakea. 6106-26 "Kaulike (Circle in Square)"
kapa, he'e, catch, linen, cotton, 2025, 40.5 x 16.75"
\$935.00

2. KAYTON, Edwin. 6107-26 "Telling the Story"
oil on linen, 2025, 18.625 x 14.875"
\$1,500.00

The motion to approve the purchases was done by Randall Francisco and seconded by Susana Browne. The motion was unanimously approved by the full board.

Bishop Square, Pauahi Tower Lobby, "Journeys," curated exhibition (November 1, 2025 - January 3, 2026)

AASC VACS: Liz Train, Noreen Naughton, Greg Northrup

SFCA: Kamakani Konia, Eli Baxter

1. KIYABU, David. 6117-26 "Beginnings"

marble/wood, 2025, 4.75" x 10" x 6.5"

\$2,000.00

2. KIYABU, David. 6118-26 "Valley Highs"

aragonite/wood, 2025, 5" x 9.5" x 6"

\$1,500.00

2. KIYABU, David. 6119-26 "Nomads"

marble/wood, 2025, 14" x 12.5" x 6"

\$5,500.00

The motion to approve the purchases was done by Janet Sato and seconded by Susana Browne. The motion was unanimously approved by the full board.

Hawaii Island Art Alliance, Wailoa Art Center, "2025 Hawai'i Nei Art Exhibition," juried exhibition (November 7, 2025 - December 11, 2025)

AASC VACS: Sherm Warner, Marilyn Nicholson, Codie King, Meidor Hu

SFCA: Eli Baxter

1. TIDMARSH, Dominic. 6121-26 "In The Flow Of Makua's Time

watercolor, watercolor pencil, and gouache on Arches 300lb cold press paper, 2025,

18.75 x 37.75"

\$2,750.00

2. FICKINGER, Heidi. 6122-26 "Swirl of 'Āhinahina"

photography, 2025, 31.125 x 25.125"

\$500.00

The motion to approve the purchases was done by Randall Francisco and seconded by Susana Browne. The motion was unanimously approved by the full board.

Donkey Mill Art Center, "I Mana Ka Mo'omo'o," curated exhibition (October 25, 2025 - December 13, 2025)

AASC VACS: Sherm Warner, Leslie Steinwachs, Hiroki Morinoue

SFCA COMM: Michael Marshall

SFCA: Eli Baxter

1. FISHER-FORESTER, Puakea. 6127-26 "Mahina Wai Kākou"

Hawaiian kapa, squid ink, hand-mulled oil paint, 'alaea, weld, Lā'ie lepo, handwoven

hemp linen (ca. early 1900s), bamboo and cotton, 2025, 24 x 41"

\$4,400.00

2. Lehuauakea. 6128-26 "Lā Kū'oko'a Flyer (after Black and Auld)"

wildfire charcoal and ochre pigment hand-painted on kapa, 2023, 25.25 x 17.5"

\$3,000.00

3. Lehuauakea. 6129.01-.02-26 "Kū'ē Petition I and II"

wildfire charcoal and ochre pigment hand-painted on kapa, 2023, 31.25 x 48.75"

\$8,000.00

The motion to approve the purchases was done by Susana Browne and seconded by Randall Francisco. The motion was unanimously approved by the full board.

University of Hawai‘i at Mānoa, The Art Gallery, "‘O Ka Wai Mai ʻOmi From Lahaina to the Litani," curated exhibition (January 13, 2026 - February 18, 2026)

AASC VACS: Greg Northrup, Susan Hogan

SFCA COMM: Marcia Morse

SFCA: Kamakani Konia, Eli Baxter

1. CHING, Kahi. 6135-26 "Umeke Pōhaku"

pōhaku (stone), 2025, 8 x 23 x 15"

\$1,800.00

2. CHING, Kahi. 6136-26 "Umeke Pōhaku II"

pōhaku (stone), 2025, 11 x 29 x 22"

\$1,800.00

3. KNEUBUHL, Hina. 6137-26 "Ka 'Ai Kupuna: Collaborating with Water"

kapa, earth pigments, 2025, 30.5 x 55"

\$16,000.00

4. KNEUBUHL, Hina. 6138-26 "Lifeblood: Water's Story Held in the Land"

kapa, earth pigments, 2025, 34 x 55"

\$10,000.00

5. BASSOUS, Reem. 6139.01-10-26 "The Living Bones"

acrylic, graphite, colored pencil on bristol paper, 2021-2024, 11 x 17" each (10 total)

\$9,000.00

The motion to approve the purchases was done by Susana Browne and seconded by Randall Francisco. The motion was unanimously approved by the full board.

6. Approval of the Visitation Schedule for Recommendations for Art Acquisition Selection Committees

1. Exhibition Title:

MidSummer Art Celebration

Exhibition Opening Date:

2026-05-15

Exhibition Closing Date:

2026-06-18

Location of Exhibition:

Wailoa Arts and Cultural Center

200 Piopio St.

Hilo, HI 96720

2. Exhibition Title:

Fiber Hawaii 2026

Exhibition Opening Date:

2026-06-05

Exhibition Closing Date:

2026-06-27

Location of Exhibition:

Downtown Art Center Gallery

3. Exhibition Title:

36 Views of Mauna Loa (Phase II)

Exhibition Opening Date:

2026-06-20

Exhibition Closing Date:

2026-08-28

Location of Exhibition:

East Hawaii Cultural Center

The motion to approve the visitation schedule was done by Randall Francisco and seconded by Susana Browne. The motion was unanimously approved by the full board.

7. Director's Report – Legislative Update, Strategic Plan Update, SFCA Staffing Update

Karen Ewald reported that the House bills supported by the State Foundation on Culture and the Arts (SFCA) successfully moved out of the House Committee on Finance. These measures included bills related to SFCA grant standards, arts education funding, the Artists in the Schools program, arts data mapping, the designation of the Hawai'i Symphony Orchestra as the official state symphony, the establishment of the Hawai'i Cultural Trust, and the proposed transfer of SFCA and the King Kamehameha Celebration Commission to the Department of Business, Economic Development, and Tourism.

Two Senate bills impacting SFCA were monitored closely. SB 2921 proposed transferring balances from various non-general funds, including the Works of Art Special Fund, into the General Fund. SFCA submitted testimony in opposition, citing legal concerns regarding the use of CIP General Obligation bond funds for general fund purposes, as well as the importance of the Works of Art Special Fund in supporting Hawai'i artists and the creative economy. SB 3007 proposed establishing an Office of Creative Innovation within SFCA, including a Governor-appointed Executive Director and Specialist positions. This measure had not yet been scheduled for a hearing in the Senate Ways and Means Committee.

SFCA also advanced implementation of its Strategic Plan, with development of measurable goals, timelines, and evaluation metrics beginning in late March 2026. Progress was shared regularly with the Commission and publicly through reports, e-news, and the website, with the Strategic Plan serving as the framework for FY27 budget priorities. In addition, SFCA had five vacant positions in various stages of recruitment, including Arts Program Specialist, Administrative Services Assistant, and Secretary roles.

8. Executive Session (closed to the public):

The motion to enter into Executive Session was done by Susana Browne and seconded by Janet Sato. The motion was unanimously approved by the full board.

The Commission anticipates convening an executive session to consider the Evaluation of the SFCA Executive Director, pursuant to Section 92-5(a)(2), HRS, provided that if the Executive Director concerned requests an open meeting, an open meeting shall be held, and/or under section 92-5(a)(4), HRS, to consult with the Commission's attorneys on questions and issues pertaining to the Commission's powers, duties, privileges, immunities, and liabilities.

9. Announcements

Susana Browne, Chair of the Administrative Committee, reported that the board met in executive session to discuss the results of Karen Ewald's evaluation. She stated that she and the Board Chair will meet with Ms. Ewald to review the results, discuss next steps for addressing areas of growth, and communicate her strengths and achievements.

10. Adjournment

The motion to adjourn was done by Susana Browne and seconded by Randall Francisco. The meeting adjourned at 1:34 pm

DIRECTORS REPORT

May 15, 2026

Legislative Update

STATE UPDATE

All pertinent measures died in the 2026 Session except for House Bil 1815_HD1-SD1 which is on its way to the Governor's desk for signature.

HB1815_HD1-SD1 reads:

Part I: Explicitly applies existing grant standards to Performing Arts Grants Program grants under the State Foundation on Culture and the Arts. Part II: Transfers the State Foundation on Culture and the Arts and the King Kamehameha Celebration Commission from the Department of Accounting and General Services to the Department of Business, Economic Development, and Tourism. Transfers certain authority and responsibilities held by the Comptroller regarding the Works of Art Special Fund to the Director of Business, Economic Development, and Tourism. (CD1)

SFCA is currently working closely with Department of Business, Economic Development and Tourism to determine the necessary next steps to ensure that the transfer process is implemented as efficiently and effectively as possible. Discussions are ongoing regarding operational procedures, including whether SFCA will need to transition to different systems for processing encumbrances and payments, as well as identifying the training requirements necessary for the SFCA accounting team.

At present, the SFCA accounting team consists of two employees who rely on the Department of Accounting and General Services Administrative Services Office (ASO) for support with payment processing, check issuance, and the rollover of funds from multiple funding sources each quarter. As SFCA does not currently have an internal ASO position to perform these functions, these responsibilities will need to be coordinated with and assumed by DBEDT as part of the transition process.

SFCA will remain located at the 250 South Hotel Street offices and will continue the work of the agency under the leadership of the Executive Director and the Commission. The Commission structure remains intact and will continue to provide policy guidance and direction to both the Executive Director and the agency. The mission of SFCA and the priorities outlined in the current Strategic Plan will remain unchanged.

An additional update regarding the transfer process will be provided at the July Board meeting in Hilo.

FEDERAL UPDATE

On Monday May 11, the SFCA received notice from the National Endowment for the Arts for the FY27 Partnership Agreement. The total award amount is \$964,738.

On April 3, 2026, The White House submitted its budget proposal to Congress for fiscal year 2027. The request continues to reflect a government downsizing agenda that reduces or eliminates appropriations for numerous federal programs and agencies—including the National Endowment for the Arts (NEA), the National Endowment for the Humanities, and the Institute of Museum and Library Services.

Strategic Plan Update

From March through April, SFCA staff developed the implementation timeline for the Strategic Plan. All programs and activities are intended to align with and support the goals and priorities outlined in the Plan to ensure consistency across the agency's work.

Key staff members were assigned responsibility for identifying future projects and initiatives related to the Strategic Plan. Each division completed this work independently within the SFCA Teams drive, with submissions currently under review by the Executive Director for evaluation and approval. While some of the identified initiatives reflect ongoing projects, many represent new efforts aligned with the Strategic Plan. Several initiatives may require only a few months to implement but are intended to be administered and sustained over the next five years.

Now that the State and Federal budget have been finalized, SFCA staff are drafting the agency's operational budget, which will be presented to the Board for review and approval at the July meeting. The proposed budget is being developed to align with the priorities and implementation needs of the Strategic Plan.

Personnel Update

SFCA is currently in the final stages of recruitment for the Arts Program Specialist II position. All candidate interviews were completed during the past week, and a conditional offer is anticipated to be extended to the selected candidate by the weekend of May 16–17. The anticipated start date for the position is July 2026.

The candidate list for the Administrative Assistant (Secretary) position was received by SFCA during the week of May 4. Staff contacted all candidates on the list; however, there were no positive responses, with several candidates indicating that they had already

accepted other employment opportunities. SFCA has requested an updated candidate list and will continue recruitment efforts.

The candidate list for the Arts Program Specialist III position was received on May 11, and interviews are currently being scheduled throughout the month of May.

The Arts Program Specialist III Project Manager position remains with the Personnel Office for processing.

The Administrative Services Assistant IV position also remains with the Personnel Office, where the position description is undergoing internal updates. Once completed, the position will be posted internally as an Internal Vacancy and subsequently listed on the public DHRD recruitment website.

Art in Public Places Survey Initiative

Key commissioners and staff have been working diligently on the development of a Request for Proposals (RFP) to address the need for a comprehensive review of the Art in Public Places Program's acquisition and deaccessioning processes. The RFP was posted on the State procurement website and closed in late April. The next phase of the process will involve evaluating submitted proposals against established criteria to identify the most qualified firm to assist SFCA with this important initiative.

Purpose and Rationale for the Initiative

Conducting a review of the acquisition practices for a public art collection is essential to maintaining the collection's credibility, legal integrity, and long-term public value. As identified in the current Strategic Plan, specifically Objectives 1.1(e) and 1.1(f), this effort has been prioritized to ensure appropriate planning, oversight, and resource allocation. A formal review of these practices has not been conducted in many years.

Without periodic evaluation, acquisition practices may become inconsistent or unintentionally influenced by individual preferences, donor interests, or shifting market trends. A comprehensive review can help identify gaps or unintended biases in the collection, including potential underrepresentation of certain artists, communities, cultural perspectives, or artistic movements. This process will support the development of more balanced, equitable, and mission-aligned collecting strategies moving forward.

Engaging a neutral third-party consultant to assess past acquisitions will provide SFCA with valuable insight into the evolution of the collection, including patterns in what has been collected, areas that may have been overlooked, and opportunities for future growth. This analysis will help ensure that future acquisitions contribute to a cohesive, meaningful,

and publicly accountable collection rather than a fragmented one, thereby strengthening public trust in the stewardship of the collection.

The deaccessioning process also warrants careful review and modernization. Thoughtful deaccessioning enables an institution to responsibly remove artworks that no longer align with the collection's mission, are duplicative, or no longer meet curatorial or conservation standards.

Public collections require ongoing investments in storage, conservation, documentation, and maintenance. Retaining works that are damaged beyond repair, infrequently utilized, or outside the institution's scope can place unnecessary strain on limited resources. A clear and responsible deaccessioning process allows SFCA to better allocate space, funding, and staff capacity toward artworks that more effectively serve the public and support the institution's mission and long-term goals.

Establishing a clearly documented, transparent, and consistently applied process—supported through independent review—will reinforce public confidence that the collection is actively, ethically, and responsibly managed for future generations.

Commission Changes and Commission Committee Updates

SFCA extends its sincere gratitude to outgoing commissioners Susana Browne, Jill Kuramoto, Randall Fujiki, and Michael Marshall, whose terms of public service with the State Foundation on Culture and the Arts will conclude on June 30, 2026. Their longstanding dedication to the agency and continued support of the SFCA team over the years have been deeply valued and sincerely appreciated.

SFCA is also pleased to welcome two new commissioners to the Board, effective July 1, 2026. Dr. Makanani Sala and Patrick Branco will begin their initial terms of service, which will extend through June 30, 2030. Both bring extensive experience in cultural knowledge, community engagement, and public service at the county, state, and federal levels.

In light of these Board transitions, SFCA will undertake a review of the current committee structure and reassign Board members to committee roles as appropriate. The Executive Director intends to work closely with the Board Chair on committee appointments and encourages current Board members to express interest in the committees where they believe their expertise and service would be most beneficial. The Board's current standing committees are Administrative, Art in Public Places, and Communications.

**State Foundation on Culture and the Arts
Community Arts Grant Program FY2027**

Staff Report

May 15, 2026

FACTS

Project Title: Community Arts Grant Program Fiscal Year 2027

Project Staff: Karen Ewald – Executive Director, Brittany Rakowitz – Community Arts Coordinator

Statute/Policy/Procedures: Community Arts Program follows Chapter 9-11 for applicant eligibility purposes.

WHAT

The State Foundation on Culture and the Arts (SFCA) provides public funds through community grants to support projects designed to promote, perpetuate, and preserve culture and the arts in Hawai'i.

The applicant organization may apply to one of the following categories:

- Presenting and Performing Arts
- Heritage and Preservation
- Arts Education
- Community Arts

WHEN

Intent to Apply: August 1, 2025, through September 30, 2025

Project Application: September 1, 2025, through October 30, 2025

Grant Review Panels: April 14, 15, and 16, 2026

Grant Implementation Period: July 1, 2026, through June 30, 2027

Final Report: July 30, 2027

WHERE

Nonprofit arts and culture organizations are located statewide, and many include neighboring islands in their program outreach.

WHO

Nonprofit 501(c)3 arts and culture organization subject to meeting Chapter 9 legal eligibility requirements, policies established by the SFCA, and application requirements to be eligible to submit a project application. In accordance with State of Hawai'i Administrative Rules §3-94-1 (c) organization may have no active grant contracts at the time of contracting.

HOW

Community Arts Grant FY2027 included an Intent to Apply to determine the applicant organization's legal eligibility to submit a project application.

- 74 organizations submitted an Intent to Apply.
- 65 organizations completed and submitted a project application.
- The organizations requested \$5,000, \$10,000, and \$15,000 in funding support, and if awarded, they will receive the entire requested amount.
- Grant Review Panel, consisting of arts and culture professionals, reviewed and scored submitted applications based on Proposed Activities (50%), Qualifications (25%), and Need, Benefit, Impact & Good Use of Public Funds (25%).
- Project Applications were scored 0-100 by panelists using the Community Arts Grant Program Evaluation Rubric.
- Final scoring is organized from high to low, with organizations receiving funding in descending order based on the available funding.

Attachments:

- Community Arts FY2027 Project Application Final Score and Ranking
- Evaluation Rubric

Supported Project Categories

Arts Education- 14
 Community Arts - 12
 Heritage & Preservation - 8
 Presenting & Performing Arts - 31

Organization Location by Island

Oahu - 32 Molokai - 1
 Kauai - 1 Hawaii - 15
 Maui - 14
 Lanai - 2

BUDGET IMPLICATIONS

The total Community Arts Grant FY2027 request is \$910,000. The total anticipated Community Arts funding from federal and state funds is yet to be determined due to federal and Legislature funding restructuring.

RECOMMENDATIONS

Staff requests Board approval of the Community Arts funding in the order of priority ranking (descending order from high to low), as state funding becomes available.

STATE FOUNDATION ON CULTURE AND THE ARTS
COMMUNITY ARTS GRANT PROGRAM FISCAL YEAR 2027 | FINAL SCORES & RANKING

	APPLICANT ORGANIZATION	ISLAND	PROJECT CATEGORY	PROJECT TITLE	APPLICATION NUMBER	GRANT REQUEST	OVERALL SCORE
1	PlayBuilders of Hawaii Theater Company	Oahu	Heritage & Preservation (Culture)	Our Okinawan 'Ohana: Stories from Hawaii's Okinawan Community	FY27-0025	\$15,000	98.5
2	Hana Arts	Maui	Arts Education (Education)	Hāna No'eau: Creative Learning and Cultural Education in Hāna	FY27-0055	\$15,000	97.5
3	Society for Kona's Education & Art	Hawaii	Community Arts (Engagement)	The Art of Community Learning	FY27-0084	\$15,000	97.5
4	Hawaii Youth Symphony Association	Oahu	Presenting & Performing Arts (The Arts)	Pacific Music Institute 2026	FY27-0075	\$15,000	97.5
5	YOUNG OF HEART WORKSHOP dba Pu'uhonua Society	Oahu	Heritage & Preservation (Culture)	Keanahala: A Place for Hala	FY27-0050	\$15,000	96.5
6	Maui Historical Society/ Hale Hō'ike'ike at the Bailey House	Maui	Heritage & Preservation (Culture)	Hale Hō'ike'ike Cultural Events Series	FY27-0065	\$15,000	95.5
7	East Hawai'i Cultural Council dba East Hawai'i Cultural Center	Oahu	Arts Education (Education)	Gallery Exhibitions	FY27-0006	\$15,000	95
8	Hui Noeau	Maui	Arts Education (Education)	Enhancing Lives through Visual Arts Education in Maui County	FY27-0015	\$15,000	95
9	Nova Arts Foundation Inc.	Oahu	Presenting & Performing Arts (The Arts)	IONA's 26/27 Annual Season	FY27-0023	\$15,000	94
10	Sounding Joy Music Therapy, Inc.	Oahu	Community Arts (Engagement)	Healing Generations: Community Collaborative Music Therapy for Older Adults	FY27-0062	\$15,000	94
11	Lahaina Arts Guild	Maui	Arts Education (Education)	We Make Art Happen	FY27-0004	\$15,000	94
12	HIKI OLA	Hawaii	Heritage & Preservation (Culture)	Ho'okahua Hou: Restoring Foundations of Cultural Access in Kealakekua	FY27-0070	\$15,000	93.5
13	Hawaii International Film Festival	Oahu	Presenting & Performing Arts (The Arts)	46th Annual Hawai'i International Film Festival	FY27-0058	\$15,000	93
14	Youth Artists Hawaii	Hawaii	Arts Education (Education)	Youth Artists Hawaii	FY27-0080	\$10,000	93
15	Hilo Education Arts Repertory Theatre Company (HEART)	Hawaii	Arts Education (Education)	I HEART Musical Theater/A Tuition-Free Musical Theatre Training Program	FY27-0089	\$15,000	93
16	Hawai'i Concert Society	Hawaii	Presenting & Performing Arts (The Arts)	Hawaii Concert Society 2026-2027 Season	FY27-0076	\$5,000	93
17	Ohana Arts	Oahu	Presenting & Performing Arts (The Arts)	Okinawan Princess Musical Theatre Production	FY27-0085	\$15,000	93
18	Oahu Choral Society	Oahu	Presenting & Performing Arts (The Arts)	Hui pū i ka mele (to join together/assemble in song)	FY27-0039	\$15,000	92.5
19	West Hawaii Dance Theatre	Hawaii	Presenting & Performing Arts (The Arts)	West Hawaii Dance Theatre Performance & Mentorship Season Project	FY27-0030	\$15,000	92.5
20	Hawaii Institute for Music Enrichment and Learning Experiences, Inc.	Oahu	Presenting & Performing Arts (The Arts)	Hawaiian Steel Guitar Festivals and Showcases	FY27-0019	\$15,000	92.5
21	Alliance for Drama Education	Oahu	Community Arts (Engagement)	Gett'ng Dramatic	FY27-0081	\$15,000	92
22	Kona Choral Society, Inc.	Hawaii	Presenting & Performing Arts (The Arts)	Kona Choral Society 2026-2027 Community Concert Season	FY27-0020	\$15,000	92
23	Maui Public Art Corps	Maui	Community Arts (Engagement)	Hui Mo'olelo	FY27-0043	\$15,000	91.5
24	Hawaii Performing Arts Company, Ltd. dba Manoa Valley Theatre	Oahu	Presenting & Performing Arts (The Arts)	Celebrating Humanity: Theatre, Music, and Education at Manoa Valley Theatre	FY27-0002	\$15,000	91.5
25	Archive for Healths, Arts, and Spirit	Maui	Arts Education (Education)	Hawaii Youth Poet Laureate 2027	FY27-0028	\$15,000	91.5
26	TAG - The Actors' Group	Oahu	Presenting & Performing Arts (The Arts)	Waihōna Kino (Body Archive)	FY27-0026	\$15,000	91.5
27	Kumu Kahua Theatre	Oahu	Presenting & Performing Arts (The Arts)	Kumu Kahua Theatre's 56th Season	FY27-0078	\$15,000	91.5
28	Hawaii Craftsmen	Oahu	Presenting & Performing Arts (The Arts)	Hawaii Craftsmen Exhibition Programs	FY27-0059	\$15,000	91

STATE FOUNDATION ON CULTURE AND THE ARTS
COMMUNITY ARTS GRANT PROGRAM FISCAL YEAR 2027 | FINAL SCORES & RANKING

	APPLICANT ORGANIZATION	ISLAND	PROJECT CATEGORY	PROJECT TITLE	APPLICATION NUMBER	GRANT REQUEST	OVERALL SCORE	EST. PROGRAM BUDGET
29	Hawaii Handweavers' Hui	Oahu	Community Arts (Engagement)	Visiting Artist Giovanna Imperia: Weaving with Wire	FY27-0047	\$5,000	91	\$410,000
30	Volcano Art Center	Hawaii	Community Arts (Engagement)	CommUNITY Arts	FY27-0037	\$15,000	91	\$425,000
31	Hawaii Symphony Orchestra	Oahu	Presenting & Performing Arts (The Arts)	Hawai'i Symphony Orchestra's Masterworks Series	FY27-0045	\$15,000	90.5	\$440,000
32	Hawaii Youth Opera Chorus	Oahu	Arts Education (Education)	Music Education and Performance emphasizing Hawaiian culture	FY27-0052	\$15,000	89.5	\$455,000
33	Maui Academy of Performing Arts	Maui	Presenting & Performing Arts (The Arts)	Uncommon Stages Project	FY27-0011	\$15,000	89.5	\$470,000
34	Honolulu Academy of Arts dba Honolulu Museum of Art	Oahu	Arts Education (Education)	See Art Make Art and Soundshop	FY27-0083	\$15,000	89.5	\$485,000
35	Japanese Cultural Center of Hawaii	Oahu	Heritage & Preservation (Culture)	2027 New Year's 'Ohana Festival	FY27-0014	\$15,000	89	
36	Diamond Head Theatre	Oahu	Presenting & Performing Arts (The Arts)	Diamond Head Theatre's 2026-2027 Season	FY27-0044	\$15,000	89	
37	Holualoa Foundation for Arts & Culture dba Donkey Mill Art Center	Hawaii	Community Arts (Engagement)	Donkey Mill Art Center Exhibition Program 2026-2027	FY27-0071	\$15,000	88.5	
38	Kahilu Theatre Foundation	Hawaii	Community Arts (Engagement)	Kahilu Festival Series	FY27-0009	\$15,000	88	
39	Honolulu Theatre for Youth	Oahu	Arts Education (Education)	HTY's Statewide Tour FY27	FY27-0017	\$15,000	88	
40	Hokulani Children's Theatre of Molokai	Molokai	Presenting & Performing Arts (The Arts)	Hokulani CTOM 2026-2027 Performing Arts Program	FY27-0067	\$15,000	87.5	
41	Lanai Arts and Culture Center	Lanai	Community Arts (Engagement)	Let's Art Together	FY27-0049	\$10,000	87	
42	Prince Dance Company	Hawaii	Presenting & Performing Arts (The Arts)	PERFORM: Expanding Student Access to student-led Performing Arts	FY27-0016	\$15,000	87	
43	Hula Preservation Society	Oahu	Heritage & Preservation (Culture)	Kou Lima Nani Ē: The Lovely Hula Hands of Mid-20th Century Hawai'i	FY27-0040	\$15,000	86.5	
44	Arts Kauai/Kauai Songwriters	Kauai	Presenting & Performing Arts (The Arts)	Kauai Songwriters Music Festival 2027	FY27-0003	\$15,000	86.5	
45	Hawaiian Historical Society	Oahu	Heritage & Preservation (Culture)	Talk Story Saturdays	FY27-0042	\$15,000	86	
46	ProArts, Inc.	Maui	Presenting & Performing Arts (The Arts)	2026-2027 ProArts Theatrical Season	FY27-0069	\$15,000	85.5	
47	Aloha International Piano Festival	Oahu	Arts Education (Education)	Kanikapila - Music & Talkstory	FY27-0046	\$10,000	85.5	
48	Hana Hou Music Program	Maui	Arts Education (Education)	Hana Hou Music Program 2026 Summer Season	FY27-0031	\$15,000	85	
49	Lanai Academy of Performing Arts Inc.	Lanai	Presenting & Performing Arts (The Arts)	LAPA 2026-2027 Performing Arts Programs	FY27-0024	\$15,000	83.5	
50	Kamuela Philharmonic Orchestra Society	Hawaii	Presenting & Performing Arts (The Arts)	Youth Artist Competition	FY27-0008	\$15,000	83.5	
51	Bamboo Ridge Press	Oahu	Presenting & Performing Arts (The Arts)	Honoring Four Decades of Literary Contribution	FY27-0033	\$15,000	82	
52	Hawaii United Okinawa Association	Oahu	Heritage & Preservation (Culture)	Warabi Ashibi - Okinawan Cultural Day Camp for Children	FY27-0013	\$5,000	82	
53	Tau Dance Theater	Oahu	Presenting & Performing Arts (The Arts)	Waihōna Kino (Body Archive)	FY27-0057	\$15,000	81	
54	Windward Choral Society	Oahu	Presenting & Performing Arts (The Arts)	A Community Remembrance for the 25th Anniversary of 9/11	FY27-0035	\$15,000	79.5	
55	Ballet Hawaii	Oahu	Community Arts (Engagement)	Angel Program FY2027	FY27-0077	\$15,000	79	
56	Maui Pops Orchestra, Inc.	Maui	Presenting & Performing Arts (The Arts)	Maui Pops Orchestra 2026-2027 Concert Season	FY27-0036	\$15,000	77.5	
57	Honolulu Printmakers	Oahu	Community Arts (Engagement)	98th Annual Juried Printmaking Exhibition	FY27-0027	\$10,000	77.5	

**STATE FOUNDATION ON CULTURE AND THE ARTS
COMMUNITY ARTS GRANT PROGRAM FISCAL YEAR 2027 | FINAL SCORES & RANKING**

	APPLICANT ORGANIZATION	ISLAND	PROJECT CATEGORY	PROJECT TITLE	APPLICATION NUMBER	GRANT REQUEST	OVERALL SCORE
58	Maui Arts & Cultural Center	Maui	Presenting & Performing Arts (The Arts)	MACC Presents 26-27: Selected Works	FY27-0086	\$15,000	77
59	Isle of Maui Pipe Band	Maui	Arts Education (Education)	IMPB Pipe School	FY27-0034	\$5,000	76.5
60	The Friends of the Palace Theater	Hawaii	Presenting & Performing Arts (The Arts)	Hawaii Music Concert Series	FY27-0074	\$15,000	75
61	Maui Classical Music Festival	Maui	Presenting & Performing Arts (The Arts)	45th Annual Maui Classical Music Festival	FY27-0010	\$15,000	75
62	Adaptations Dance Theater	Maui	Presenting & Performing Arts (The Art)	SEED Choreographic Residency	FY27-0012	\$5,000	68
63	Hawaii Theatre Center	Oahu	Community Arts (Engagement)	Hawaii Theatre Education Program	FY27-0082	\$15,000	52.5
64	Teohinui Foundation	Maui	Presenting & Performing Arts (The Arts)	Teohinui Foundation's Annual Recital	FY27-0048	\$15,000	50
65	Hawaii Opera Theatre	Oahu	Arts Education (Education)	Hawaii Opera Theatre Education Programs	FY27-0018	\$15,000	28



COMMUNITY ARTS GRANT PROGRAM EVALUATION RUBRIC

CRITERIA	UNACCEPTABLE	ACCEPTABLE	EXCELLENT
Proposed Activities (50%)	0 to 15 points	16 to 39 points	40 to 50 points
Description of arts and/or culture project is complete and clearly explained, about what the applicant will do and how they will manage, coordinate, implement, collaborate	<ul style="list-style-type: none"> • Incomplete description of what the applicant intends to do or how the project will be implemented. • Insufficient description of project management and coordination. 	<ul style="list-style-type: none"> • Description addresses what the applicant intends to do. • Applicant describes project management and coordination. 	<ul style="list-style-type: none"> • Complete details on what the applicant intends to do. • Completely describes project management and coordination. • Applicant identifies and/or explains any collaborations.
Timeline of arts and/or culture project activities is realistic and clear, with identified alternatives if needed	<ul style="list-style-type: none"> • Incomplete information about timeline of project activities. • Information does not match the project description. • Timeline is not realistic for this project. 	<ul style="list-style-type: none"> • Applicant provides a timeline of project activities. 	<ul style="list-style-type: none"> • Realistic and clear proposed timeline of activities. • Applicant suggests timeline backup plan if needed and how it will work.
Proposed locations of arts and/or culture activities is complete and clear, and identifies any collaborative support	<ul style="list-style-type: none"> • Incomplete information about proposed location of activities. • Information does not match the project description. 	<ul style="list-style-type: none"> • Applicant identifies proposed locations for its project activities. 	<ul style="list-style-type: none"> • Complete and clear information for proposed location of activities. • Applicant suggests location alternatives if needed. • Identifies any collaborative support for use of facilities and space at locations.
Consideration of OPTIONAL work evidence - IF work evidence was submitted - enhances understanding of the arts and/or culture project	<ul style="list-style-type: none"> • OPTIONAL work evidence does not clearly support this project. 	<ul style="list-style-type: none"> • OPTIONAL work evidence supports the project. 	<ul style="list-style-type: none"> • OPTIONAL work evidence supports most recent work accomplished. • Demonstrates a high quality project.
			<ul style="list-style-type: none"> • OPTIONAL work evidence for a new applicant or new project supports what the applicant intends to do.



**COMMUNITY ART GRANT PROGRAM
EVALUATION RUBRIC**

CRITERIA	UNACCEPTABLE 0 to 5 points	ACCEPTABLE 6 to 19 points	EXCELLENT 20 to 25 points
Qualifications (25%) Applicant's experience for implementing the arts and/or culture project is extensive, solid, resourceful, has an excellent reputation	<ul style="list-style-type: none"> • Applicant has less than one year of experience with this type of project. • Applicant does not explain its experience with this type of project. • Applicant alludes to working relationships, but does not identify its partnerships and experience with the proposed partners. 	<ul style="list-style-type: none"> • Applicant has more than one year of experience with this type of project. • Applicant explains its partnerships or other relationships for project implementation. 	<ul style="list-style-type: none"> • Applicant has extensive experience with this type of project. • Applicant has solid relationships in the community for project implementation. • Applicant has ready access to resources to support the project. • Applicant has excellent reputation for implementing projects of high quality.
Project personnel to manage and coordinate the arts and/or culture project are highly qualified with clear roles and responsibilities	<ul style="list-style-type: none"> • Identified project managing/coordinating personnel do not have much experience with this type of project. • Roles and responsibilities are not clear. • Identified project personnel are poorly qualified for the project. 	<ul style="list-style-type: none"> • Project personnel who will manage or coordinate the project, and their qualifications, are identified. • Roles and responsibilities are identified. 	<ul style="list-style-type: none"> • Complete list and description of personnel who will manage and coordinate the project, including their qualifications. • Roles and responsibilities are clear. • Identified project personnel are highly qualified for the project.
Proposed artists, presenters and other specialists are highly qualified with clear roles and responsibilities	<ul style="list-style-type: none"> • Identified proposed artists, presenters and other specialists do not have much experience with this type of project. • Roles and responsibilities are not clear. • Identified artists, presenters and other specialists are poorly qualified for the project. 	<ul style="list-style-type: none"> • Project artists, presenters and other specialists and their qualifications, are identified. • Roles and responsibilities are identified. 	<ul style="list-style-type: none"> • Complete list and description of proposed artists, presenters and other specialists. • Roles and responsibilities are clear. • Identified artists, presenters and other specialists are highly qualified for the project.



COMMUNITY ARTS GRANT PROGRAM EVALUATION RUBRIC

CRITERIA	UNACCEPTABLE	ACCEPTABLE	EXCELLENT
Need, Benefit, Impact, Good Use of Public Funds (25%)	0 to 5 points	6 to 19 points	20 to 25 points
Intended audience(s) is/are clearly identified with complete explanations about reach or any new or special populations	<ul style="list-style-type: none"> • Little or no information about who the intended audience is and how that audience will be reached. • Little or no explanation about the reason for the project's focus on the intended audience(s). 	<ul style="list-style-type: none"> • Intended audience(s) is/are identified. • Applicant explains how the intended audience(s) will be reached. 	<ul style="list-style-type: none"> • Clear and complete information about the intended audience(s) and how the applicant will reach them. • Identifies new and/or special populations, and describes they will be reached. • Applicant explains reason for project focus on intended audience(s).
Community need; benefits and impact are completely and clearly explained	<ul style="list-style-type: none"> • Little or no information about community need or benefits and impact for the intended audience. 	<ul style="list-style-type: none"> • Applicant identifies and explains need, benefits and impact. 	<ul style="list-style-type: none"> • Complete and clear explanation of community need for the project. • Complete and clear explanation of benefits and impact for the intended audience(s).
How the applicant will know that the project was successful – completely and clearly describes quantitative and qualitative evaluation	<ul style="list-style-type: none"> • Applicant explains very little about its quantitative or qualitative data collection in relation to determining project success. • Applicant is weak in qualitative evaluation. 	<ul style="list-style-type: none"> • Applicant conducts both quantitative and qualitative evaluation of the project. • Qualitative data include feedback from project participants. 	<ul style="list-style-type: none"> • Applicant conducts both quantitative and qualitative evaluation of the project. • Quantitative data are relevant to the project and informative for project improvement. • Qualitative data include constructive feedback from project personnel, project partners and participants. • Applicant uses appropriate evaluation instruments.



**COMMUNITY ARTS GRANT PROGRAM
EVALUATION RUBRIC**

CRITERIA	UNACCEPTABLE	ACCEPTABLE	EXCELLENT
Good use of public funds	<ul style="list-style-type: none"> • Project is undeveloped or somewhat developed. Project personnel are inadequate for this type of project. Need, benefits and impact are not appropriate for public funds. • Grant request is not appropriate for the described project scope. 	<ul style="list-style-type: none"> • Project is developed. Project personnel are capable. Need, benefits and impact are clear. Project can make good use of public funds. • Grant request is somewhat appropriate for the described project scope. 	<ul style="list-style-type: none"> • Project is well-developed. Project personnel are very capable for a successful project. Need, benefits and impact are very convincing. Very good use of public funds. • Grant request is appropriate for the described project scope.
TOTAL POINTS	0 to 25 points	26 to 79 points	80 to 100 points
Funding/No funding:	Not fundable	Possibly fundable	Fundable



STATE FOUNDATION ON CULTURE AND THE ARTS
Grant Review Panelist Roster

HAWAII ISLAND

Valerie	Allen	Pulama Na Liko
Dr. Lawrence	Butler	East Hawaii Cultural Center
Maja	Clark	Hawaii Land Trust
Virginia	Holte	West Hawaii Dance Theatre
Kristen	Jordan	Community Arts/Arts Education
Ann	Logan-Phillips	West Hawaii Dance Theatre
Brenda	McConnell	East Hawaii Cultural Center
Miho	Morinoue	Holualoa Foundation dba Donkey Mill Art Center
Ashley	Raymond	Holualoa Foundation dba Donkey Mill Art Center
Larry	Reitzer	Hilo Education Arts Repertory Theatre

KAUAI

Terrence	Lui	Arts Administrator
Jill	Weiner	Teaching Artist
Carol	Yotsuda	Garden Island Arts Council

MAUI

Neida	Banderter	Maui Arts & Cultural Center
Maggie	Costigan	Maui Dance Council
Jen	Cox	Adaptation Dance Theatre
Anne-Marie	Forsythe	Hui Noeau Visual Arts Center
David	Johnston	Maui Academy of Performing Arts
Maomi Malua	Lake-Farm	Maui Historical Society/Bailey House Museum
Kahulu	Malua	Maui Arts & Cultural Center
Erin	O'Keif	Hui Noeau Visual Arts Center
Moira	Pirsch	Maui Arts & Cultural Center
Jessica	Stack	Pomaikai Elementary
Rae	Takemoto	Pomaikai ES
Carolyn	Wright	Maui Academy of Performing Arts

MOLOKAI

Alice	Kaahanui	Molokai Art Center
-------	----------	--------------------

OAHU

Lei	Ahsing	Hawaii Arts Alliance
Carolann	Biederman	Chamber Music Hawaii
Donna	Blanchard	Kumu Kahua Theatre
Jeffery	Boeckman	University of Hawaii Manoa- Music Department
Mark	Branner	University of Hawaii Manoa- Theatre & Dance
Emma	Broderick	Pu`uhonua Society
Dr. Lawrence	Butler	East Hawaii Cultural Center
Donnie	Cervantes	Aupuni Space

OAHU

Una	Chan	Department of Education
Mariko	Chang	Civil Beat
Erik	Chang	East West Center
Lisa	Chow	Hawaii Mission House
Kim	Coffee Isaac	Hawaii Craftsmen
Zita	Cup Choy	Iolani Palace
Justin	Davies	Honolulu Museum of Art
Sue	Dueber	Joining Hands Consulting
Rebecca	Dunning	Honolulu Theatre for Youth
Jenny	Engel	Manoa Heritage Center
Jane	Ferriera	Hawaii Youth Opera Chorus
Dr. Maria 'Nina'	Guerrero	Sounding Joy Music Therapy
Samuel	Guerrero	Lili'uokalani Trust
Erik	Haines	Hawaii Opera Theatre
Jaimey	Hamilton Faris	University of Hawaii- Art & Art History
Jennifer	Herring	University of Hawaii Manoa- College of Education
Hebatuallah	Hendawy	Architect
Jennifer	Higaki	Hawaii State Public Charter Schools
Stacy	Hoshino	Hawai'i Council for the Humanities
Beth	Iwata	Japanese Cultural Center of Hawaii
Tammy	Jennings	Leeward Community College
Malia	Ka`ai-Barrett	Honolulu Youth Opera Chorus
Keiko	Kajiwara	Sounding Joy Music Therapy
Daniel	Kelin	Honolulu Theatre for Youth
Scott	Kitano	Japanese Cultural Center of Hawaii
Joseph	Koholo Daugman	DOE Retired Principal
Louis King	Lanzilotti	Retired SFCA Arts Education
Vivian	Lee	Education
Aaron	Levine	UH Manoa, College of Ed, Institute for Teacher Education, Elementary & Secondary
Maile	Loo	Hula Preservation Society
Chet-Yeng	Loong	University of Hawaii Manoa- Music Department
Patricia	Massouth	University of Hawaii Manoa- Music Department
Natalie	McKinney	Kokua Hawaii Foundation
Sara	Mizban	Hawaii Arts Alliance
Michelle	Morihara	Iolani Palace
Dawn	Mostiler	Ballet Hawaii
Allyson	Nakamoto	Japanese Cultural Center of Hawaii
Frances	Nakachi Kuba	Tamagusuku Ryu Senjukai
Natalie	Nimmer	Pacific Relevance Consulting
Aaron	Padilla	Honolulu Museum of Art
Jonathan	Parrish	Hawaii Symphony Orchestra
Marcia	Pasqua	Hawaii Arts Alliance
Kristen	Pauka	University of Hawaii
Michael	Pili Pang	Hatale Hula Ka No eau/UH Manoa/ Moanalua Gardens Foundation
Maika	Pollack	University of Hawaii Manoa
Maya	Portner	University of Hawaii- Leeward Community College

OAHU

Dr. Annie	Renolds	East-West Center
Peter	Rockford-Espiritu	Tau Dance Theatre
Amy	Schiffner	University of Hawaii- Manoa, Theatre and Dance
Jamie	Simpson Steele	UH Manoa, College of Education, Institute for Teacher Education
Amanda	Smith	University of Hawaii- Manoa, College of Education
Joe	Stepec	University of Hawaii
Blair	Suzuki	Office of Veterans Services
Kimi	Takazawa	Ballet Hawaii
Trevor	Tamashiro	Diamond Head Theatre
Dalani	Tanahy	Kapa Hawaii
Kim	Taylor Reece	The ARTS at Marks Garage
Cheryl	Treiber-Kawaoka	UH Manoa, College of Education, Institute for Teacher Education
Misa	Tupou	Projex Art
Sarah	Twomey	University of Hawaii- Manoa, College of Education
Morgan	Vitarelli	Manoa Heritage Center
Heather	Williams	Art Explorium
Randy	Wong	Hawaii Youth Symphony Association
Pauline	Worsham	Moanalua Gardens Foundation
Allison	Yanagi	Hawaiian United Okinawa Association
Kathleen	Young	Manoa Valley Theatre
Lynn	Young	University of Hawaii Manoa- College of Education

**Art in Public Places Program
Relocatable Works of Art
May 15, 2026**

Purchase Recommendations for the Art in Public Places Collection

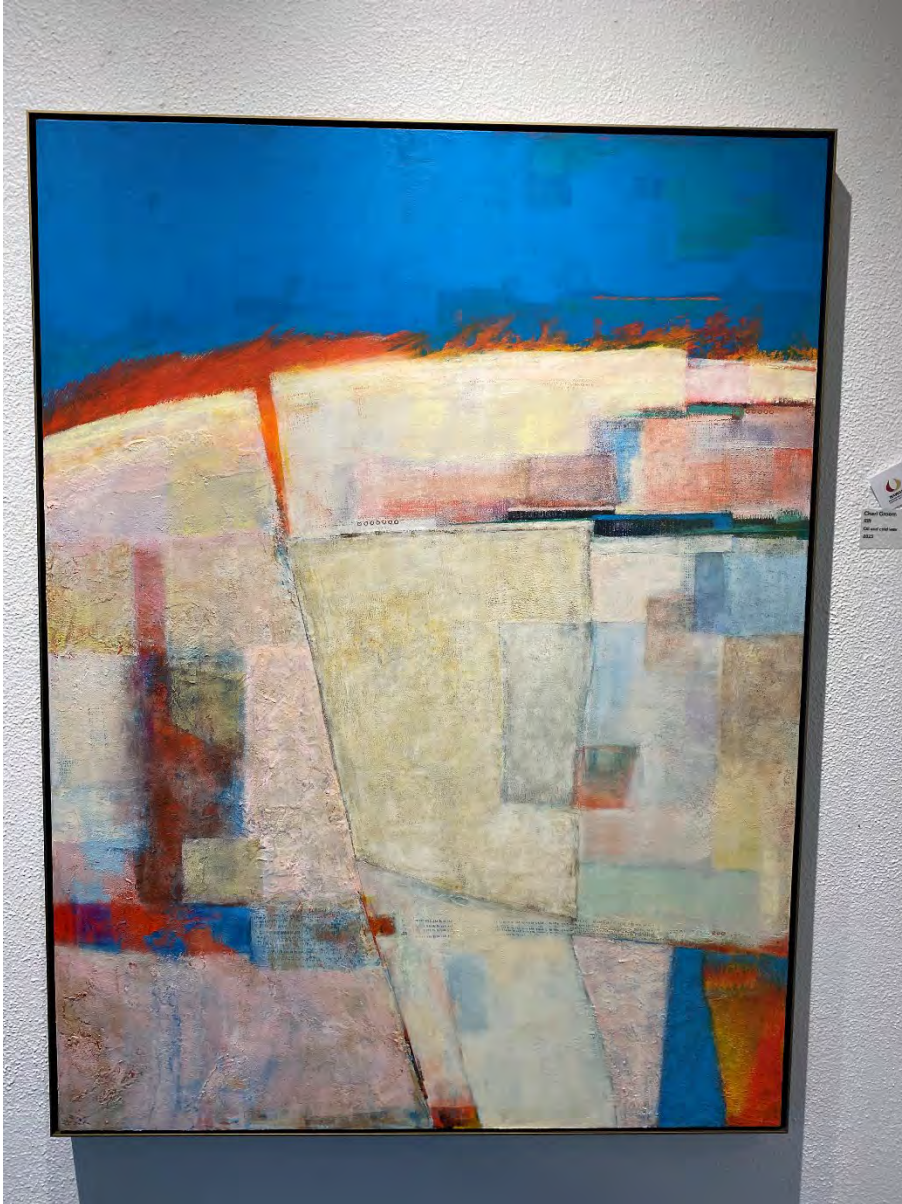
Hawaii Island Art Alliance, Wailoa Art Center, "2025 Abstract Only! 15th Annual Multimedia Juried Competition," juried exhibition (August 1, 2025 - August 28, 2025)

AASC VACS: Sherm Warner, Mary Begier, Codie King, Mary Babcock
SFCA: Eli Baxter

1. YAMANOHA, Glenn. 6074-26 "3 Mahus"
octopus ink and graphite on paper, 1997, 6 x 18"
\$600.00



2. GROOM, Cheri. 6075-26 "Rift"
oil and cold wax, 2025, 48 x 36"
\$7,500.00



3. DOUGLAS, Bob Danhieux. 6076-26 "Blankenberg 1972"
Mokuhanga, sumi, graphite, 2024, 33.75 x 25.5"
\$1,000.00



TOTAL

\$9,100.00

Maui Arts & Cultural Center, "Ocean of Peace," curated exhibition (December 6, 2025 - January 29, 2026)

AASC VACS: Neida Bangerter, Michael Takemoto

SFCA COMM: Susana Browne, Jan Sato

SFCA: Eli Baxter

1. WATSON, Anthony. 6123-26 "Obechad"

mango, koa, stainless steel, aluminum, rubberized polymer, resin, 2025,

22.5" x 34" x 9"

\$4,000.00



2. WATSON, Anthony. 612-26 "Enthused and Spiteful Hairpins"
guava, Hong Kong orchid, koa, bamboo, oyster shell, black coral, plastic, inorganic
dye, 5160 steel, nylon, 2025, 15.5" x 18.5" x 3.75"
\$1,800.00



3. BAMBA, James. 6125.01 - "Balakbak Taitampe" - \$1,200.00
BAMBA, James. 6125.02 - "Balakbak Gaitampe" - \$1,500.00
woven Pandanus, 2025, 10.75" x 6.5" x 5.5" & 3" x 3.75" x 4"
\$2,700.00



4. YAMASE, Lissette. 6126-26 "The Disappearance of Sipin"
charcoal on paper, 2020, 20.75" x 16.75"
\$800.00



TOTAL

\$9,300.00

**Hui No'eau Visual Arts Center, "2026 Annual Juried Exhibition," juried exhibition
(January 16, 2026 - February 20, 2026)**

AASC VACS: Paul Janes-Browne, Joelle C. Perz

SFCA COMM: Susana Browne, Jan Sato

SFCA: Eli Baxter

1. TURNBULL, Christine. 6130-26 "Divine Goddess"
low fire ceramic, dried seedling palm frond, 2025, 34 x 44 x 12"
\$2,900.00



2. MCNERTHNEY, Sheri. 6131-26 "Golden Path"
handwoven linen, gold leaf thread, fabric paint, 2025, 70 x 36"
\$12,000.00



3. KEAN, Susan Conway. 6132-26 "Waiting For Surf"
oil, 2025, 18.5 x 30.5"
\$2,000.00



4. JOUBERT, Masako. 6133-26 "Modern Botanicals"
ceramic, 2025, 13 x 14 x 14"
\$3,200.00



5. DAVIS, Paul Allan. 6134-26 "Ke Kahawai o Ko'u Moe'uhane"
fiber collage, batik, muslin, tulle, thread, 2025, 18 x 18.5"
\$5,000.00



TOTAL

\$25,100.00

Manini Collective, Kaiao Space, "CALABASH," curated exhibition (March 6, 2026 - April 5, 2026)

AASC VACS: Maya Portner, Russell Sunabe, Elana Bernard

SFCA: Eli Baxter, Kamakani Konia

1. FOLTZ, Kaila. 6147-26 "False Horizon"

oil on canvas, 2026, 36 x 36"

\$2,000.00



2. MILK, Grace. 6148-26 "Ceremony Without Witness"
acrylic gouache on canvas, 2026, 22 x 18"
\$5,000.00



3. CHAI, Lauren Hana. 6149-26 "Mom's Coming 'Round To Put It Back The Way It Ought To Be"

oil and mixed media on canvas, 2026, 32 x 32"

\$5,000.00



TOTAL

\$12,000.00

Honolulu Printmakers, Downtown Art Center, "98th Annual Exhibition," juried exhibition (April 3, 2026 - April 25, 2026)

AASC VACS: Deborah Nehmad, Susan Hogan

SFCA COMM: Randy Fujiki

SFCA: Shirley Lam, Eli Baxter

1. BARNABY, Margaret. 6153-26 "Hokkaido Riverside"
woodblock, 2025, 31.75" x 47.75"
\$3,600.00



2. PIETRUSZKA, Aaron. 6154-26 "Halema'uma'u (2016)"
mixed media, 2025, 20.25" x 16.5"
\$1,200.00



3. GOEBEL, Jon. 6155-26 "Ebb and Flow"
intaglio, 2026, 15.25" x 22.75"
\$1,200.00



TOTAL

\$6,000.00

Aupuni Space, "Islandwide," curated exhibition (April 8, 2026 - April 25, 2026)

AASC VACS: Emily McIlroy, Johnny Macas

SFCA COMM: Randy Fujiki

SFCA: Eli Baxter, Kamakani Konia

1. SATO, Nālani. 6158-26 "Boar Standing on Bed No. 2 (Modern Animism series)"

oil on canvas, 2026, 36 x 48"

\$6,800.00



2. SATO, Nālani and OLSEN, Tino. 6159-26 "Hawaii State Capitol Building (Art in Public Places Series)"

oil and graffiti pen on canvas, 2026, 48 x 60"

\$8,500.00



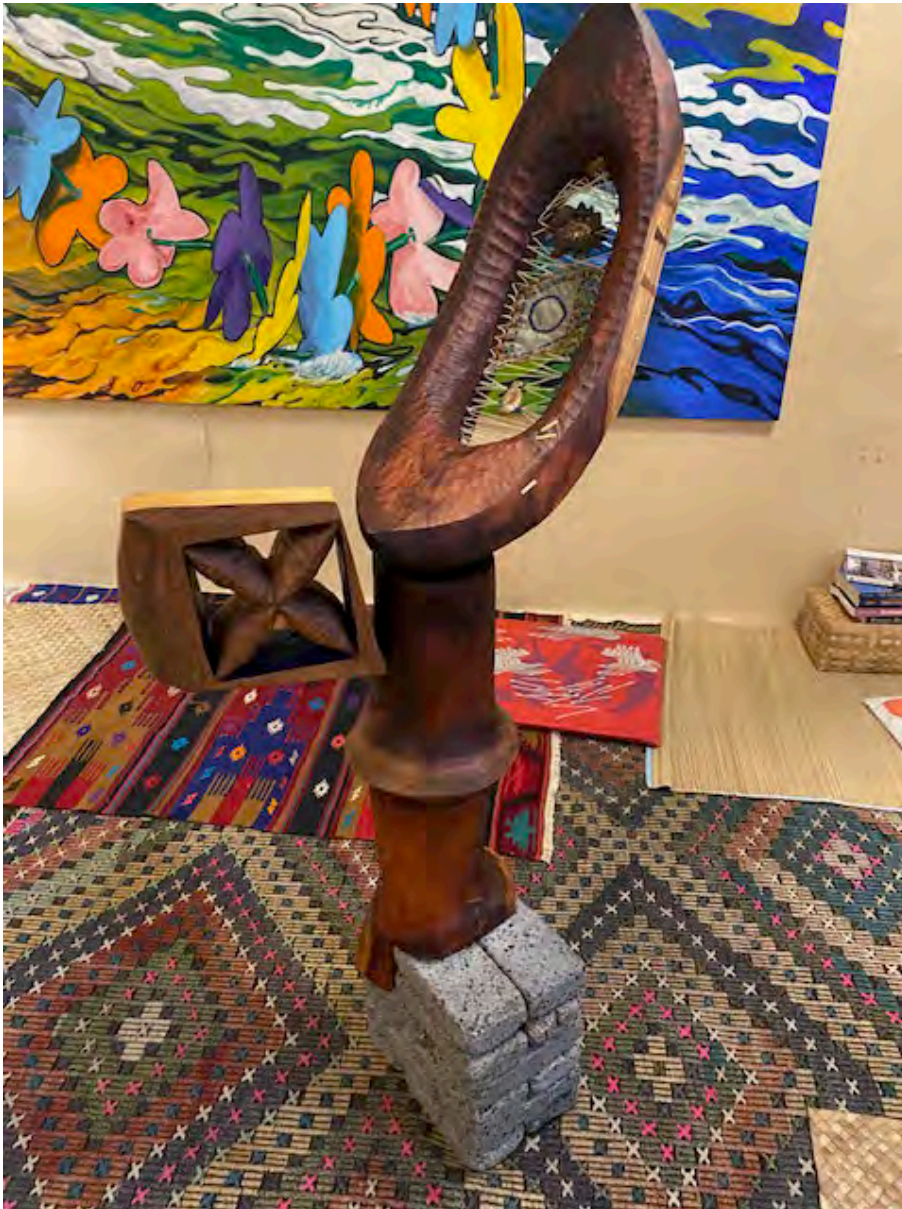
3. SEWARD, Lawrence. 6160-26 "Magellan"
acrylic and archival digital print on wood panel, 2014, 46.5 x 20.5"
\$4,500.00



3. KHAN, Amber. 6161-26 "Observe/Participate"

Kamani, bass wood, bog wood, u-pins, cordage, pendant, thread, opihi, brick, beads,
lei remnants, 2026, 36 x 58 x 19"

\$6,700.00



TOTAL

\$26,500.00

State Foundation on Culture and the Arts
Art in Public Places
STAFF REPORT
May 15, 2026

REQUEST:

Approve recommended schedule for Acquisition Award Selection Committee (AASC) for July - August 2026.

FACTS:

Submitted requests:

1. Exhibition Title:

AHA! Art Immersion

Exhibition Opening Date:

2026-07-03

Exhibition Closing Date:

2026-08-05

Location of Exhibition:

Wailoa Art Center

Juried Exhibition Description:

AHA! Art Immersion is a juried exhibition and immersive arts experience curated by Abled Hawai'i Artists (AHA) at Wailoa Art Center. Featuring artists with physical and cognitive disabilities from across Hawai'i, the exhibition centers disabled voices as vital contributors to the state's cultural landscape. Through a dynamic combination of visual artworks and multi-sensory installations, the exhibition reimagines accessibility not as accommodation, but as a creative and curatorial framework. Gallery spaces are transformed into thematic environments - including tactile works, vibration-based pieces, and sensory-responsive installations – inviting audiences to engage art through diverse embodied experiences. Rooted in AHA's 18-year legacy of advancing inclusion, mentorship, and economic opportunity for disabled artists, the exhibition elevates both emerging and established creatives.

The jurors are Adare (they/them) (a classically trained portrait artist, teacher, and disability rights activist based on the Big Island of Hawai'i) and Bob Danhieux Douglas (a multidisciplinary visual artist based in Hilo, Hawai'i, working in painting, sculpture, photography, and Mokuhanga).

List percentage that artists receive from the sale of their works: 75%

2. Exhibition Title:

Portal 3

Exhibition Opening Date:

2026-08-01

Exhibition Closing Date:

2026-09-27

Location of Exhibition:

Firehouse Gallery at the Waimea Arts Council
67-1201 Mamalahoa Highway
Kamuela, HI 96743

Juried Exhibition Description:

The “Portal 3” Juried Fine Art Show invites Hawai'i Island artists to explore creative pathways beyond conventional boundaries. This themed competition encourages innovative interpretations of “portal,” challenging artists to push their work in new directions. Selected by a guest juror, Lisa Solomine, the exhibition highlights originality, technical skill, and imaginative vision across a diverse range of media.

The juror is Lisa Solomine, designer and arts administrator.

www.waimeaartscouncil.org

www.firehousegallery.org

List percentage that artists receive from the sale of their works:
50%

3. Exhibition Title:

LUMINOSITY - The Legacy

Exhibition Opening Date:

2026-08-02

Exhibition Closing Date:

2026-10-31

Location of Exhibition:

Viewpoints Gallery in Makawao, Maui

Curated Exhibition Description:

Following the success of the Viewpoints Gallery December exhibit “LUMINOSITY”, where we had the honor of showing a large and unique collection of Dick Nelson’s own artwork, we are now eager to focus on his lasting impact through many artists’ own artistic expressions in a diversity of styles and media. His dedication to teaching in Hawai'i and the whole United States, as well as Canada, has made a difference

for generations of artists. Therefore, this year we honor the teachings of Dick Nelson and we have invited artists from Hawai'i and beyond who have attended classes on 'Color Theory and Visual Literacy' from this influential Maui artist/educator. Many of them are well-known and have received numerous awards. We hope that the guests artists will embrace this opportunity to showcase how they have applied his teaching to their own work.

Curated by Dick Nelson and Ann Wittenbrock.

List percentage that artists receive from the sale of their works:
60%

4. Exhibition Title:

Na Lā'au o Hawai'i: Hawaii's Woodshow 2026

Exhibition Opening Date:

2026-08-07

Exhibition Closing Date:

2026-08-29

Location of Exhibition:

Downtown Art Center

1041 Nu'uuanu, Honolulu, HI

Exhibition Concept / Description:

Hawaii's Woodshow™, Na La`au o Hawai'i is organized by the Hawaii Forest Association (HFA) and celebrates exceptional work by artists using Hawai'i-grown wood. Now in its 34th year, the Show is designed to impart public awareness of the beauty, utility and potential of the woods that grow in Hawaii, especially those that have been planted here. It celebrates the highest quality wood craftsmanship in our state across categories from student to master artists in divisions including wood turning, furniture, sculpture, and accessories. Every work is juried based on its use of Hawaii-grown wood and outstanding design and craftsmanship.

<https://woodshow.hawaiiforest.org/>

Juried by E. Tory Laitila.

List percentage that artists receive from the sale of their works:
60%

5. Exhibition Title:

16th Annual Abstract Only!

Exhibition Opening Date:

2026-08-14

Exhibition Closing Date:

2026-09-17

Location of Exhibition:

Wailoa Arts and Cultural Center

200 Piopio St

Hilo, HI 96720

This multimedia juried exhibition features abstract art only! Artwork must be non-representational. No recognizable figures, objects etc. Artworks use technique, mood, color, texture and composition to convey emotion and ideas. All media welcomed in 2D, 3D and digital media. Open to artists from Hawai'i, the United States and beyond, this exhibit draws a wide group of participants who push the concepts of abstract art through a diversity of media. Created in 2010 by the director of Wailoa Center at that time, Codie King, Abstract Only was born out of a request from the art community and now is one of the most well-entrenched juried exhibits at Wailoa Center. We are excited to have King back in a new capacity as a juror, and to have her practiced abstract eye and aesthetics curate this year's entries.

List percentage that artists receive from the sale of their works:

75%

6. Exhibition Title:

'Aimama

Exhibition Opening Date:

2026-08-27

Exhibition Closing Date:

2026-12-10

Location of Exhibition:

Gallery 'Iolani, Windward Community College

Exhibition Concept / Description:

This exhibition brings together the work of 'Ōlohe 'Umi Kai and Sulu'ape Keone Nunes, cultural practitioners whose work is grounded in ancestral knowledge and sustained through mentorship and discipline. An 'Ōlohe in lua, Kai is known for crafting traditional Hawaiian tools and weapons using pre-colonial techniques, revealing the cultural knowledge embedded in Hawaiian technologies. Nunes is a master practitioner of kākau uhi, the traditional Hawaiian art of tattooing, a practice he has dedicated his life to restoring and perpetuating through rigorous cultural protocol and training. Together,

their work affirms the strength of ‘ike Hawai‘i, demonstrating how knowledge is carried forward through practice, mentorship, and an enduring commitment to cultural continuity. The exhibition reflects Umi Kai’s commitment to open, community-based teaching and culminates with Keone Nunes exhibiting with his final class of Mo‘okāne in the sacred art of Pāuhi.

Names of Invited Artists:

‘Ōlohe ‘Umi Kai
Sulu‘ape Keone Nunes
Kamali‘i Hanohano
Kekaliloa Gomes
Kalama Souza
Cory Kamehanaokalā Holt Taum

‘Umi Kai website: <https://www.umikaikompany.com/about-artist>

Keone Nunes: <https://www.firstpeoplesfund.org/community-spirit-award-honorees/keone-nunes>

Kamali‘i Hanohano: <https://hoakeasource.org/kamali%CA%BBik%C5%ABpono-hanohano>

Cory Taum website: <http://www.kamehanaokala.com/>

Curated by Kapulani Landgraf.

List percentage that artists receive from the sale of their works:

100%

RECOMMENDATION:

Staff recommend AASCs to be convened for all 6 AASC applications listed above.

Prepared by:

Elizabeth Baxter, Curator

date: May 15, 2026

Recommend:

c Approval

Disapproval

Karen Ewald, Executive Director

Date

Hawai'i State Foundation on Culture and the Arts

STAFF REPORT TO THE BOARD

May 15, 2026

REQUEST:

We are requesting approval for an additional \$93,507 to be added to the Hawaii State Capitol Pools commissioned work of art project by artist Solomon Enos.

FACTS:

Sol Enos requires additional funding to complete artist obligations for the Capitol Pools project. These collective costs amount to \$93,507 resulting in a new project budget of \$233,507.00

PROJECT COORDINATORS: Kamakani Konia, APP Director

WHY:

The original contract amount agreed upon by the artist and the SFCA was \$233,507. This total is to be encumbered for the Capitol Pools CWA. However due to budgeting priorities in FY 2025, SFCA was only able to create an initial contract for \$140,000.00. Construction and Installation Phase must be added to the current contract for a total of \$93,507.

WHO: Artist Solomon Enos for the Capitol Pools Work of Art Project

BUDGET IMPLICATIONS: There is an ample amount of funds in the S-27-319 account for this request.

Conceptual Phase	\$25,200.00
Design Phase	\$49,000.00
Mobilization Phase	\$65,800.00
Construction Phase	\$73,507.00
Installation Phase	\$20,000.00
Total	\$233,507.00

RECOMMENDATION:

Approve the artist's request for additional funds to complete the project.



SOLOMON ENOS

NATIVE HAWAIIAN ARTIST

SOLOMON ENOS

for

**STATE CAPITOL POOLS
LIMITED DESIGN COMPETITION**

ARTIST'S PROPOSAL
DECEMBER 27, 2023

Scope, size, scale, and nature

This is a proposal to retrofit the Capitol Pools water features on both the East and West flanks of the Hawai'i State Capitol, into walkable mosaic tile floor murals. As well as keeping with the symbolism of the edifice representing the Hawaiian archipelago, and the pools being the ocean, the goal will also be to have the new aesthetic resonate with the existing central mosaic and inner chamber installations.

Environmental role, symbolic meaning, and aesthetic purpose

Converting the former Capitol pools into walkable surfaces will solve the issues of water damage to facilities below, and more importantly, it will provide more area for community use and access. The pools as they had initially been built, were to represent the ocean surrounding the island archipelago of Hawai'i. The intention here is to replace those water features with a tiled floor mosaic, that shares an aesthetic in harmony with the existing Tadashi Sato mosaic in the center of the capital, as well as the large wall installations within both House and Senate chambers.

The draft proposed image included in this proposal, takes the layered elements of the central mosaic, and responds with ripples as currents and tides, incorporating the tree-columns into this radiating aesthetic. Upon closer examination, shown in the square detail example also included in this proposal, we see the refraction of light across shallow to deep ocean bottoms, with a multitude of limu (seaweed) accents, as well as corals and reef life in a visual mosaic chorus. There will even be areas of kapa-print repetition, moving the overall aesthetic into a kind of "structured and gestural" dance, symbolizing the union of mass and motion. In a more literal sense, in the draft proposal image we see an amalgamation of the many kinds of reef and near shore ocean variations, with subtle differences in color between the East and West installations. Having traveled to Papahānaumokuākea, from O'ahu to Midway and back again, I got to experience a more inclusive understanding of our archipelago, and this proposal aims to do what the Hawai'i State Capitol was built for; to bring all of Hawai'i together in harmony.

Type, texture, color, finish, and other characteristics of its materials

The artistic design will be translated by hand painting and airbrushing the colors free hand, following the ceramic printed image underneath. After all colors have been fired in up to two (2) firings the 8mm4. Float glass will be toughened (Security glass according to DIN 12150-1) and worked into a laminated safety glass. The overall artwork to have a tentative area of approximately 54,000 square feet. The final artwork would be laminated as a triple laminated glass with an etched transparent non slip structure on the top surface.

Fabrication method and vendor, safety, and maintenance features

Fabrication of approximately 6000 art glass panels at 3' x 3' each according to a unique design by Solomon Enos. The design is translated by applying and combining layers of airbrushed, hand painted and ceramic printed colored enamels onto 8 mm float glass recreating the painterly design by the artist. The applied colors will be fired to the glass at a temperature of about 600 °C / 1100 °F to form a permanent bond with the glass.

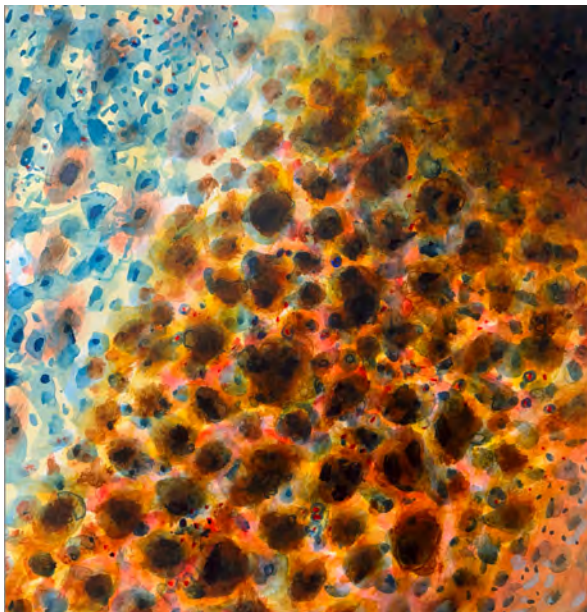
Please find attached the following supporting items:

1. Color rendering of the proposed artwork and setting. Drawings should be in a scale of 1/16"= 1'.
2. Color rendering of a 30" x 30" section at 100% scale.
3. Fabrication, shipping and installation budget (as provided by GLASMALEREI PETERS STUDIOS)
4. Artist fee.



Color rendering of the proposed artwork and setting.

Full high resolution image attached.



Color rendering of a 30" x 30" section at 100% scale.

Full high resolution image attached.

Submitted By:

Artist

Date

SOLOMON ENOS

NATIVE HAWAIIAN ARTIST

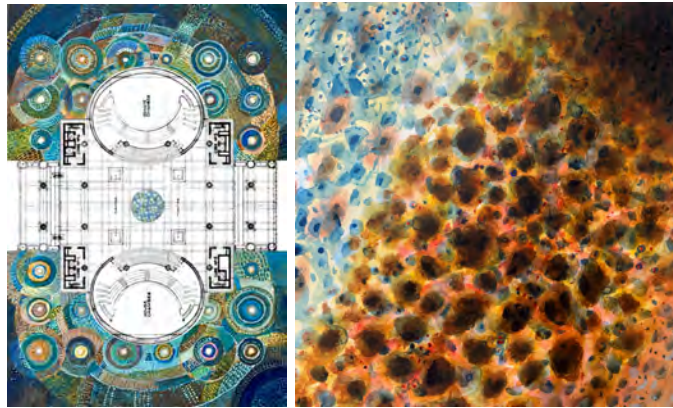
PROPOSAL: CUSTOM ART FOR STATE CAPITOL POOLS

December 26, 2023

Project Description:

Design and retrofit the Capitol Pools water features on both the East and West flanks of the Hawai'i State Capitol, into walkable mosaic tile floor murals for State Capitol Pools. No other reproductions or licensing of the Artwork shall be included in the pricing. Artist shall retain all copyright rights and rights to reproduce the Artwork in all forms. Artwork shall be completed and approved by the Client within _____ days of execution of contract. Client shall be responsible for installation of the Artwork.

Artwork sample:



Fees:

Standard Fees for designing Artwork for Capitol Pools: **\$223,000 plus Hawaii GET.**

Fifty percent (50%) of the Fee is due at execution of contract and remaining balance due upon receipt of Artwork.

Client: State of the Culture and the Arts

Contact: Jonathan Johnson

Email: johnson.jj2022@gmail.com

Phone:

Subject to execution of Art Commission Contract.

Any questions or comments should be directed to Kanakolu Noa at kanakolu@n30studios.com