

STATE FOUNDATION ON CULTURE AND THE ARTS
General Board Committee Meeting Agenda
Friday, July 10, 2026
11:00 am

Physical Meeting Location:

Wailoa Center
200 Piopio Street
Hilo, Hawaii 96720

Remote Meeting Location:
Video Conference via Zoom

<https://us06web.zoom.us/j/87947825091?pwd=HV87OCqNWfbfp1TBgLMDh6LqQAzUBC.1>

Meeting ID: 879 4782 5091

Passcode: 818674

One tap mobile

+16692192599,,87947825091#,,,,*818674# US (San Jose)

+17209289299,,87947825091#,,,,*818674# US (Denver)

The meeting will be held using interactive conference technology under Section 92-3.7, Hawaii Revised Statutes (“HRS”). Commissioners, staff, testifiers, and the public can choose to participate in person or online via Zoom. The public may also view the live meeting via its Zoom link at

<https://us06web.zoom.us/j/87947825091?pwd=HV87OCqNWfbfp1TBgLMDh6LqQAzUBC.1>

If you are having difficulty connecting to the meeting, please contact Kamakani Konia at (808) 586-0300.

To Provide Written Testimony

We encourage interested persons to submit written testimony in advance of the meeting, which will be distributed to Commissioners prior to the meeting and allow a timely review. Please submit written testimony via email to kamakani.p.konia@hawaii.gov

Written testimonies can also be mailed to:

Kamakani Konia

State Foundation on Culture and the Arts

250 South Hotel Street, 2nd Floor

Honolulu, Hawai‘i 96813

Written testimonies may be posted upon the State Foundation on Culture and the Arts meeting website. As a precaution, please be mindful of any personal information that may be contained in your testimony prior to submitting it unless you intend for it to be shared. Late written testimony will be retained as part of the record

If you require special assistance or auxiliary aids and/or services to participate in the subject public meeting, please contact Kamakani Konia for the State Foundation on Culture and the Arts, at kamakani.p.konia@hawaii.gov or (808)586-0300 as soon as possible. Requests made as early as possible have a greater likelihood of being fulfilled. Upon request, this notice is available in alternate/accessible formats.

and distributed to Commissioners as soon as practicable, but we cannot ensure that the Commissioners will receive it in sufficient time to review, prior to decision-making.

To Provide In-Person Oral Testimony

Attend in-person at:

Wailoa Center
200 Piopio Street
Hilo, Hawaii 96720

To Provide Testimony by Telephone

Individuals interested in signing up to provide oral testimony at the meeting may submit their name, e-mail address, and telephone number to kamakani.p.konia@hawaii.gov. On the day of the meeting at the start of the agenda item, you wish to testify on, dial the above listed telephone number (Zoom); input the meeting ID: 879 4782 5091 and the passcode: 818674, and follow the prompts.

To Provide Video/Zoom Testimony

Please send your request in a timely manner to kamakani.p.konia@hawaii.gov with your name, email address, telephone number, and agenda item you wish to testify on. Once your request has been received, you will receive a confirmation email with pertinent information. You may testify without signing up in advance.

AGENDA

1. Call to Order
2. Roll Call and Determination of Quorum
3. Approval of June 8, 2026, Meeting Minutes
4. Public Testimony on Agendized Items

Public testimony on any item relevant to this agenda may be taken at this time, or a testifier may wait to testify when the agenda item is called for in discussion. Pursuant to Section 92-3, HRS, the Chair of the Commission has the authority to impose reasonable conditions to ensure an orderly and efficient meeting. Testimony presented during the meeting will be limited to three minutes each. Agenda items may be taken out of order.

5. Items for Discussion, Consideration, and Action

a. Directors Report

1. SFCA's Transfer to Department of Economic Development and Tourism Update on Budget Transfers and Personnel Processes
2. SFCA Personnel Update and Sharing of Staff Organizational Chart

b. Approval of State Foundation on Culture and the Arts Fiscal Year 2027 Budget

c. Approval of Gift/Purchase Recommendations for the Art in Public Places Collection Viewpoints Gallery, "Celebration of Hawai'i 2026 - 21st Annual Invitational," curated exhibition (February 12, 2026 - April 30, 2026)

If you require special assistance or auxiliary aids and/or services to participate in the subject public meeting, please contact Kamakani Konia for the State Foundation on Culture and the Arts, at kamakani.p.konia@hawaii.gov or (808)586-0300 as soon as possible. Requests made as early as possible have a greater likelihood of being fulfilled. Upon request, this notice is available in alternate/accessible formats.

1. TANAHY, Dalani. 6140-26 "Loea"
hawaiian kapa and natural dyes, 2026, 52.25 x 23"
\$4,400.00
 2. KELLER, Elizabeth. 6141-26 "Kabuki Geisha Remembers to Bring Her Own Bag to Mana,"
watercolor on paper mounted on wood, 2026, 10.875 x 8.875"
\$1,200.00
 3. KELLER, Elizabeth. 6142-26 "Hokusai Visits Haleakala Summit and Observatory"
watercolor on paper mounted on wood, 2026, 11.25 x 9.25"
\$1,200.00
 4. KELLER, Elizabeth. 6143-26 "Hiroshige Visits Kahului Harbor"
watercolor on paper mounted on wood, 2026, 10.875 x 8.875"
\$1,200.00
 5. KELLER, Elizabeth. 6144-26 " Burned Again - No Reservation!"
watercolor on paper mounted on wood, 2026, 11.25 x 9.25"
\$1,200.00
 6. KELLER, Elizabeth. 6145-26 "Kabuki Warrior on Koa Board on a Nukin' Coast Run"
watercolor on paper mounted on wood, 2026, 11.25 x 9.25"
\$1,200.00
 7. KELLER, Elizabeth. 6146-26 "Samurai Ruckus at Nuka"
watercolor on paper mounted on wood, 2026, 11 x 14"
\$1,900.00
- TOTAL \$12,300.00

Maui Arts & Cultural Center, Capitol Modern, "Schaefer Portrait Challenge 2025," juried exhibition (January 2, 2026 - July 4, 2026)

1. STORM, Kathleen. 6150-26 "Nā Kūpuna o Lehua, Lehua's Ancestors"
acrylic on canvas, 2024, 40 x 30"
\$11,000.00
 2. KUROKAWA, Kirk. 6151-26 "The Dojo"
oil on panel, 2024, 30 x 40"
\$7,700.00
 3. MIZUMOTO, Patrick. 6152-26 "Companions"
oil on linen, 2024, 30 x 40"
\$6,500.00
- TOTAL \$25,200.00

Downtown Art Center, "Dance on the Edge of the Witches' Cauldron," curated exhibition (May 1, 2025 - May 30, 2025)

1. KĀNE, Linda. 6168-26 "Na Pupu O Kaho'olawe"
charcoal on paper, diptych, 2008, 62 x 42.625"
\$12,375.00
2. KĀNE, Linda. 6169-26 "The Fine-leaved Maile of Ko'iahi"
wood, feathers, 2008, 80 x 20 x 18"
\$9,000.00

If you require special assistance or auxiliary aids and/or services to participate in the subject public meeting, please contact Kamakani Konia for the State Foundation on Culture and the Arts, at kamakani.p.konia@hawaii.gov or (808)586-0300 as soon as possible. Requests made as early as possible have a greater likelihood of being fulfilled. Upon request, this notice is available in alternate/accessible formats.

3. HICKMAN, Pat. 6170-26 “Light Passage”
skin membrane (gut) molded over door hinges, 1995, 99 x 40 x 24”
\$15,000.00
 4. HICKMAN, Pat. 6171-26 “Dragon Spike”
molded skin membrane (gut) spike shells, Chinese gold paper money, 2024, 96 x 24”
\$15,000.00
- TOTAL \$51,375.00

Hawai'i Craftsmen, Downtown Art Center, "Fiber Hawai'i 2026," juried exhibition (June 5, 2026 - June 27, 2026)

1. MCDONALD, Licia. 6175-26 “Shipped C.O.D.”
weaving, mixed media, 2026, "
\$2,100.00
 2. COPPING, Amber. 6176-26 “All the December Suns”
silk organza dyed with safflower, indigo, butterfly pea flowers, madder root, red hibiscus, and cranberry hibiscus; thread, 2026, 46 x 42”
\$2,000.00
 3. MIZUMOTO, Patrick. 6177-26 “Interwoven Systems”
mixed media; hand-carved basswood, oil paint, Belgian linen on wood panel, canvas on wood panel, artist-made frame, 2026, "
\$8,000.00
- TOTAL \$12,100.00

d. Approval of the Visitation Schedule for Recommendations for Art Acquisition Selection Committees

1. Exhibition Title:

Hawai'i Craftsmen Annual Statewide Exhibition 2026

Exhibition Opening Date:

2026-09-04

Exhibition Closing Date:

2026-09-25

Location of Exhibition:

Downtown Art Center, Honolulu

2. Exhibition Title:

Mālama Wao Akua

Exhibition Opening Date:

2026-09-11

Exhibition Closing Date:

2026-11-06

Location of Exhibition:

Hui No'eau Visual Arts Center

If you require special assistance or auxiliary aids and/or services to participate in the subject public meeting, please contact Kamakani Konia for the State Foundation on Culture and the Arts, at kamakani.p.konia@hawaii.gov or (808)586-0300 as soon as possible. Requests made as early as possible have a greater likelihood of being fulfilled. Upon request, this notice is available in alternate/accessible formats.

2841 Baldwin Ave., Makawao, HI 96768

3. Exhibition Title:

Plantcestors (working title)

Exhibition Opening Date:

2026-09-18

Exhibition Closing Date:

2026-09-27

Location of Exhibition:

Kaiao Space Gallery, Honolulu

4. Exhibition Title:

Art Kauai 2026

Exhibition Opening Date:

2026-09-19

Exhibition Closing Date:

2026-10-23

Location of Exhibition:

Kauai Society of Artists Gallery at Kukui Grove Center, Lihue, HI

5. Exhibition Title:

2026 Hawaii Watercolor Society Open Exhibition

Exhibition Opening Date:

2026-09-29

Exhibition Closing Date:

2026-10-24

Location of Exhibition:

Downtown Art Center, Honolulu

6. Exhibition Title:

submerged and emergent

Exhibition Opening Date:

2026-10-10

Exhibition Closing Date:

2026-11-01

Location of Exhibition:

Commons Gallery at the University of Hawai‘i at Mānoa

7. Exhibition Title:

If you require special assistance or auxiliary aids and/or services to participate in the subject public meeting, please contact Kamakani Konia for the State Foundation on Culture and the Arts, at kamakani.p.konia@hawaii.gov or (808)586-0300 as soon as possible. Requests made as early as possible have a greater likelihood of being fulfilled. Upon request, this notice is available in alternate/accessible formats.

Palolo 11-2

Exhibition Opening Date:

2026-10-15

Exhibition Closing Date:

2026-11-30

Location of Exhibition:

fishcake 307c Kamani St, Honolulu

e. Approval of Non-State Loan Request to Prince Hotel Waikiki

1. #5531 - Alan P. Ness, Blue Axis
2. #0445 - Suzi Pleyte Horan, Untitled
3. #5677 - Jonathan Swanz, Emerger
4. #5607 - Derek Bencomo, Azure Blue

f. Approval of the FY27 Artists in the Schools Applications

Ernest Bowen DeSilva Elementary School

Keaau High School

Konawaena High School

Mountain View Elementary School

President Abraham Lincoln Elementary School

Hawaii Technology Academy, Kauai PCS

Pearl City Highlands Elementary School

Liholiho Elementary School

Kilauea Elementary School

Connections PCS

Kapaa High School

Princess Likelike Elementary School

Hawaii Technology Academy, Kihei PCS

Kealakehe Intermediate School

Red Hill Elementary School

Hahaione Elementary School

Hawaii School for the Deaf and the Blind

Keaau Elementary School

Kanuikapono Public Charter School

Aikahi Elementary

Pauoa Elementary School

Kamiloiki Elementary School

Hokulani Elementary School

Kanu o ka Aina NCPCS

If you require special assistance or auxiliary aids and/or services to participate in the subject public meeting, please contact Kamakani Konia for the State Foundation on Culture and the Arts, at kamakani.p.konia@hawaii.gov or (808)586-0300 as soon as possible. Requests made as early as possible have a greater likelihood of being fulfilled. Upon request, this notice is available in alternate/accessible formats.

Namahana School
Ha'aheo Elementary School
Keonepoko
Linapuni Elementary School
Maemae Elementary School
Sunset Beach Elementary School
Waikele Elementary School
Ala Wai Elementary School
Pearl City High School
Blanche Pope Elementary School
Konawaena Elementary School
Waikiki Elementary School
Honoka'a Elementary School
Innovations Public Charter School
Kihei Charter School
Noelani Elementary School
Salt Lake Elementary School
Waialae Public Charter School
Aliamanu Elementary School
Haleiwa Elementary School
Holualoa Elementary School
Laupahoehoe Public Charter School
Stevenson Middle School
Waiahole Elementary School
Waialua Elementary School
Kaaawa Elementary School
Kaimuki Middle School
Mauka Lani Elementary School
Nu`uanu Elementary School
The Volcano School of Arts and Sciences Public Charter School
Kalihi Elementary School
Nanakuli Elementary School
Waipahu High School
Malama Honua Public Charter School
Kilohana Elementary School
Lahainaluna High School
Mililani Uka Elementary School
Waimea Middle School

If you require special assistance or auxiliary aids and/or services to participate in the subject public meeting, please contact Kamakani Konia for the State Foundation on Culture and the Arts, at kamakani.p.konia@hawaii.gov or (808)586-0300 as soon as possible. Requests made as early as possible have a greater likelihood of being fulfilled. Upon request, this notice is available in alternate/accessible formats.

Hana Elementary School
Lokelani Intermediate School
Pahoa Elementary School
Paia Elementary School
Puu Kukui Elementary School
Waiiau Elementary School
Wailuku Elementary School
Kahakai Elementary School
Kahului Elementary School
Kua O Ka La Public Charter School
Enchanted Lake Elementary School
Iao Intermediate School
Kaohao Public Charter School
Kapolei Elementary School
Moanalua Middle School
Kamalii Elementary School
Kula Elementary School
Lanakila Elementary School
Lihikai Elementary School
Mililani 'Ike Elementary
Palolo Elementary School
Samuel E Kalama Intermediate School
Waiakea Intermediate School
Alaka'i O Kaua'i Public Charter School (Middle)
Hilo Union Elementary School
Ka'ala Elementary School
Kamaile Academy Public Charter School
Kapaa Middle School
Prince Jonah Kūhiō Kalaniana'ole Elementary School
Queen Kaahumanu Elementary School
He'eia Elementary
Honouliuli Middle School
Mokapu Elementary School
Haiku Elementary School
Kaneohe Elementary School
Lanai High & Elementary School
Voyager Public Charter School
Waihee Elementary School

If you require special assistance or auxiliary aids and/or services to participate in the subject public meeting, please contact Kamakani Konia for the State Foundation on Culture and the Arts, at kamakani.p.konia@hawaii.gov or (808)586-0300 as soon as possible. Requests made as early as possible have a greater likelihood of being fulfilled. Upon request, this notice is available in alternate/accessibile formats.

Kaelepulu Elementary School
Ke Kula 'o Samuel M. Kamakau Laboratory Public Charter School
Pearl City Elementary School
Pomaikai Elementary School
Waianae Elementary School
Aliiolani Elementary School
Hanalei Elementary School
Honaunau Elementary School
Kealakehe Elementary School
Kihei Elementary School
Paauilo Elem. and Inter School
Princess Nahienaena Elementary School
Washington Middle School
Hawaii Technology Academy, Kona PCS
Hilo Intermediate School
Kaunakakai Elementary School
Puohala Elementary School
Waimea Elementary School
Keaau Middle School
Maunaloa Elementary School
Pukalani Elementary School

6. Announcements

7. Adjournment

In the event that audiovisual communication cannot be maintained by all participating Commissioners and quorum is lost, the meeting will automatically be recessed for 30 minutes, during which time an attempt to restore audiovisual communication will be made. If such attempt to restore is unsuccessful within said 30 minutes, all board members, members of the public, staff and other interested individuals shall log on again to the Zoom link on this Notice, whereby audio communication will be established for all participants and the meeting will continue. If reconvening the meeting is not possible because audio and visual communication cannot be re-established, the meeting will be terminated.

If you require special assistance or auxiliary aids and/or services to participate in the subject public meeting, please contact Kamakani Konia for the State Foundation on Culture and the Arts, at kamakani.p.konia@hawaii.gov or (808)586-0300 as soon as possible. Requests made as early as possible have a greater likelihood of being fulfilled. Upon request, this notice is available in alternate/accessible formats.

**STATE FOUNDATION ON CULTURE AND THE ARTS
General Board Committee Meeting
Monday, June 8, 2026**

11:00 am

Physical Meeting Location
250 South Hotel Street, Honolulu HI 96813
Multipurpose Resource Room, First Floor

MINUTES

Members Present

Janet Sato, Maui, Randall Fujiki, At-Large; Marcia Roberts-Deutsch, At-Large; Randall Francisco, Kauai, Susana Browne, At-Large, Jill Kuramoto, At-Large, Michael Marshall, Hawaii Island, Sean Connelly, At-Large

Member Absent

Konrad Ng was absent at the beginning of the Meeting and joined at agenda item 5.b. None others were absent

SFCA Staff Present

Karen Ewald, Executive Director; Elizabeth Baxter, Curator, Kamakani Konia, Art in Public Places Director, Mamiko Carroll, Public Information Specialist, Brittany Rakowitz, Community Grants Coordinator Consultant

Others Present

Ian Robertson, Deputy Attorney General; Charles Lee, Deputy Attorney General

Call to Order

Susan Browne, chairing for Konrad Ng, called the meeting to order at 11:07 am

Roll Call and Determination of Quorum

Karen Ewald called the determination of quorum. All Commissioners were present except for Konra Ng, who joined the meeting later.

Approval of May 15, 2026 Meeting Minutes

A motion to approve the Minutes of the last General Board committee meeting held on May 15, 2026 as amended was made by Marcia Roberts-Deutsch and seconded by Randall Fujiki. Amendments were to include Jill Kuramoto in the Members Present list from that meeting, and to correct the name of Marcia Roberts-Deutsch which was written as Marcia Morse. The motion to approve the minutes was approved unanimously.

4. Public Testimony on Agendized Items

Susan Browne called for any public testimony. There were no public testimonies.

Approval of the fiscal year 2027 Community Arts Grant Recommendations

Konrad Ng recused himself from this agenda item A and joined the board meeting during agenda item B. Grants Coordinator Brittany Rakowitz presented the list of non profit organizations that were ranked from highest to lowest in approval for funding for Fiscal Year 2027. It was stated that the SFCA would fund as much from the list top to bottom, as funding allowed. The motion to approve was moved by Marcia Roberts-Deutsch and seconded by Sean Connelly. The motion was approved unanimously.

Approval of Gift/Purchase Recommendations for the Art in Public Places Collection

Hawaii Island Art Alliance, Wailoa Art Center, "2025 Abstract Only! 15th Annual Multimedia Juried Competition," juried exhibition (August 1, 2025 - August 28, 2025)

1. YAMANOHA, Glenn. 6074-26 "3 Mahus"
octopus ink and graphite on paper, 1997, 6 x 18"
\$600.00
 2. GROOM, Cheri. 6075-26 "Rift"
oil and cold wax, 2025, 48 x 36"
\$7,500.00
 3. DOUGLAS, Bob Danhieux. 6076-26 "Blankenberg 1972"
Mokuhanga, sumi, graphite, 2024, 33.75 x 25.5"
\$1,000.00
- TOTAL \$9,100.00

The motion to approve the purchases was done by Susana Browne and seconded by Marcia Roberts-Deutsch. The motion was unanimously approved by the full board.

Maui Arts & Cultural Center, "Ocean of Peace," curated exhibition (December 6, 2025 - January 29, 2026)

1. WATSON, Anthony. 6123-26 "Obechad"
mango, koa, stainless steel, aluminum, rubberized polymer, resin, 2025,
22.5" x 34" x 9"
\$4,000.00
 2. WATSON, Anthony. 612-26 "Enthused and Spiteful Hairpins"
guava, Hong Kong orchid, koa, bamboo, oyster shell, black coral, plastic, inorganic dye, 5160 steel,
nylon, 2025, 15.5" x 18.5" x 3.75"
\$1,800.00
 3. BAMBA, James. 6125.01 - "Balakbak Taitampe" - \$1,200.00
BAMBA, James. 6125.02 - "Balakbak Gaitampe" - \$1,500.00
woven Pandanus, 2025, 10.75" x 6.5" x 5.5" & 3" x 3.75" x 4"
\$2,700.00
 4. YAMASE, Lissette. 6126-26 "The Disappearance of Sipin"
harcoal on paper, 2025, 20.75" x 16.75"
\$800.00
- TOTAL \$9,300.00

The motion to approve the purchases was done by Marcia Roberts-Deutsch and seconded by Randall Francisco. The motion was unanimously approved by the full board.

Hui No'eau Visual Arts Center, "2026 Annual Juried Exhibition," juried exhibition (January 16, 2026 - February 20, 2026)

1. TURNBULL, Christine. 6130-26 "Divine Goddess"
low fire ceramic, dried seedling palm frond, 2025, 34 x 44 x 12"
\$2,900.00
2. MCNERTHNEY, Sheri. 6131-26 "Golden Path"
handwoven linen, gold leaf thread, fabric paint, 2026, 70 x 36"
\$12,000.00
3. KEAN, Susan Conway. 6132-26 "Waiting For Surf"
oil, 2025, 18.5 x 30.5"
\$2,000.00

4. JOUBERT, Masako. 6133-26 "Modern Botanicals"
ceramic, 2025, 13 x 14 x 14"
\$3,200.00

5. DAVIS, Paul Allan. 6134-26 "Ke Kahawai o Ko'u Moe'uhane"
fiber collage, batik, muslin, tulle, thread, 2025, 18 x 18.5"
\$5,000.00

TOTAL \$25,100.00

The motion to approve the purchases was done by Marcia Roberts-Deutsch and seconded by Susan Browne. The motion was unanimously approved by the full board.

Manini Collective, Kaiiao Space, "CALABASH," curated exhibition (March 6, 2026 - April 5, 2026)

1. FOLTZ, Kaila. 6147-26 "False Horizon"
oil on canvas, 2026, 36 x 36"
\$2,000.00

2. MILK, Grace. 6148-26 "Ceremony Without Witness"
acrylic gouache on canvas, 2026, 22 x 18"
\$5,000.00

3. CHAI, Lauren Hana. 6149-26 "Mom's Coming 'Round To Put It Back The Way It Ought To Be"
oil and mixed media on canvas, 2026, 32 x 32"
\$5,000.00

TOTAL \$12,000.00

The motion to approve the purchases was done by Marcia Roberts-Deutsch and seconded by Mike Marshall. The motion was unanimously approved by the full board.

Honolulu Printmakers, Downtown Art Center, "98th Annual Exhibition," juried exhibition (April 3, 2026 - April 25, 2026)

1. BARNABY, Margaret. 6153-26 "Hokkaido Riverside"
woodblock, 2025, 31.75" x 47.75"
\$3,600.00

2. PIETRUSZKA, Aaron. 6154-26 "Halema'uma'u (2016)"
mixed media, 2025, 20.25" x 16.5"
\$1,200.00

3. GOEBEL, Jon. 6155-26 "Ebb and Flow"
intaglio, 2025, 15.25" x 22.75"
\$1,200.00

TOTAL \$6,000.00

Marcia Roberts-Deutsch recused herself from this vote.

The motion to approve the purchases was done by Randall Fujiki and seconded by Jill Kuramoto. The motion was unanimously approved by the full board with Marcia Roberts-Deutsch recused.

Aupuni Space, "Islandwide," curated exhibition (April 8, 2026 - April 25, 2026)

1. SATO, Nālani. 6158-26 "Boar Standing on Bed No. 2 (Modern Animism series)"
oil on canvas, 2026, 36 x 48"
\$6,800.00

2. SATO, Nālani and OLSEN, Tino. 6159-26 "Hawaii State Capitol Building (Art in Public Places Series)"
oil on canvas, 2026, 48 x 60"
\$8,500.00

3. SEWARD, Lawrence. 6160-26 "Magellan"

acrylic and archival digital print on wood panel, 2014, 46.5 x 20.5"

\$4,500.00

3. KHAN, Amber. 6161-26 "Observe/Participate"

Kamani, bass wood, bog wood, u-pins, cordage, pendant, thread, opihi, brick, beads, lei remnants, 2026,
36 x 58 x 19"

\$6,700.00

TOTAL \$26,500.00

The motion to approve the purchases was done by Sean Connelly and seconded by Mike Marshall.

There was discussion over the work of art SATO, Nālani and OLSEN, Tino. 6159-26 "Hawaii State Capitol Building (Art in Public Places Series)" A motion to deselect this piece was made by Jill Kuramoto and seconded by Susan Browne. After discussion, all commissioners voted no on the manedment and there was unanimous approval to vote yes on the first motion by Sean Connelly and Mike Marshall. The motion was unanimously approved by the full board.

Approval of Contract Amendment for Capitol Pools Project – additional funds for Construction Phase and Installation Phase

Arts Program Specialist Kamakani Konia presented to the board on May 15th the request for approval for an increase in encumbrance for the Capitol Pools Project. This was to ensure the rest of the funding for the last two phases of the project. For this meeting the motion to approve was done by Susan Browne and seconded by Marcia Roberts-Deutsch. The motion was approved unanimously by the full board.

Directors Report – Legislative Session; Strategic Plan, Personnel and Art in Public Places Survey Initiative, Commission Changes, and Commission Committee Updates

Executive Director Karen Ewald presented her Directors Report on May 15. During this agenda item, Konrad Ng asked if any commissioners had questions or discussions on the items presented in May. There were no questions or comments.

Announcements

Karen Ewald thanked the outgoing commissioners for their service and announced that the next board meeting would take place in Hilo on July 10.

Adjournment

The motion to adjourn was done by Sean Connelly and seconded by Susan Browne. The meeting adjourned at 12:33 pm.

a. Directors Report - July 10, 2026

1. SFCA's Transfer to Department of Economic Development and Tourism Update on Budget Transfers and Personnel Processes
2. SFCA Personnel Update and Sharing of Staff Organizational Chart

Beginning in May 2026, the Administrative Services Offices (ASOs) of the Department of Accounting and General Services (DAGS) and the Department of Business, Economic Development and Tourism (DBEDT) began coordinating the transfer of the State Foundation on Culture and the Arts (SFCA) to DBEDT. Since that time, both departments have worked collaboratively to facilitate a smooth transition.

The majority of the transition activities have involved internal administrative processes and have not required external coordination. These efforts include the transfer of budget codes, identification codes, email accounts, and other operational systems. While significant progress has been made, several of these internal processes remain ongoing.

One major component of the transition involves the SFCA Purchasing Card (P-Card) program. Existing purchasing cards were issued under DAGS and therefore could not be transferred to DBEDT. As a result, all outstanding purchases and payments on the DAGS-issued cards were concluded in June. SFCA staff completed new P-Card applications and all required training in coordination with the DBEDT ASO. The Foundation is currently awaiting issuance of the new purchasing cards and appreciates DBEDT's continued efforts to complete this process as quickly as possible.

Personnel transitions are also progressing collaboratively between the DAGS and DBEDT personnel offices. All existing positions are being transferred as part of the reorganization, and both personnel offices are working together to ensure the successful onboarding of three new SFCA employees according to their scheduled start dates. The Foundation is grateful for the coordination and support provided by both departments throughout this process.

In accordance with DBEDT policy, all SFCA staff are submitting updated telework agreements as part of the transition.

The Executive Director, together with the accounting team, has met with the appropriate DBEDT divisions to coordinate the administrative transition. In addition, the Executive

Director met with DBEDT Director James Tokioka to discuss the Foundation's reporting structure, planning for the 2027 Legislative Session, and communication protocols moving forward. The Director and Deputy Director are also coordinating with the Executive Director to schedule an introductory meeting with all SFCA staff.

Staffing Update

Attached is the current State Foundation on Culture and the Arts organizational chart. Position numbers that remain vacant are highlighted.

The Foundation is pleased to report that three new employees will be joining the organization during July and August:

- **Community Grants Coordinator** – Responsible for administering community grants, Grants-in-Aid (GIA), and line-item grants supporting organizations such as Bishop Museum and 'Iolani Palace.
- **Project Manager** – Responsible for managing the Art in Public Places commissioned works of art program, as well as assisting with the planning and coordination of events at Capitol Modern.
- **Administrative Assistant** (formerly Secretary) – Provides administrative support to SFCA staff, assists the Executive Director, and coordinates board meetings, travel, and other internal administrative functions.

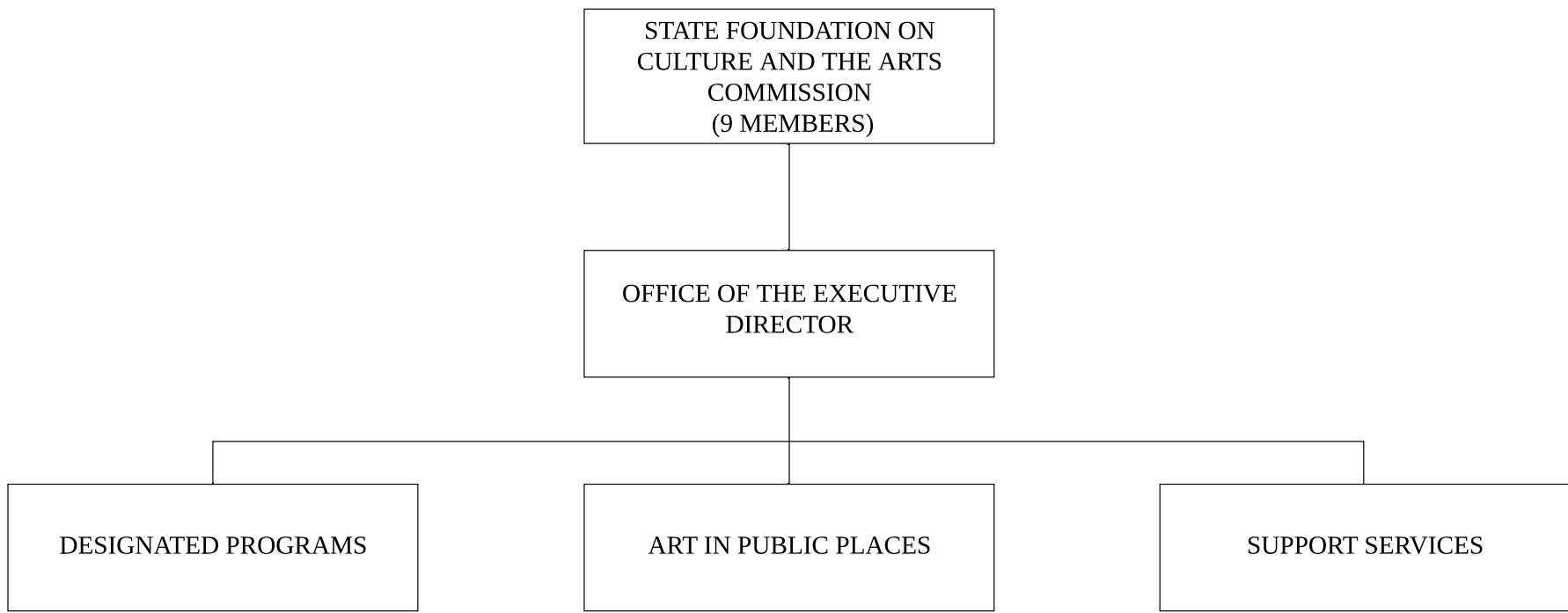
Two positions remain vacant and are identified on the attached organizational chart:

- **Administrative Services Assistant IV** – A critical position responsible for supporting the Executive Director with federal grant administration, budget development, legislative coordination, financial oversight, and operational management of the Foundation.
- **Project Manager** – This position partners with the existing Project Manager to oversee commissioned works of art projects and support museum programming and events.

Both positions are currently with the Personnel Office but have experienced delays due to updates to the position descriptions and classifications. The Foundation remains optimistic that these recruitments will move forward this summer and looks forward to filling these essential positions as soon as possible.

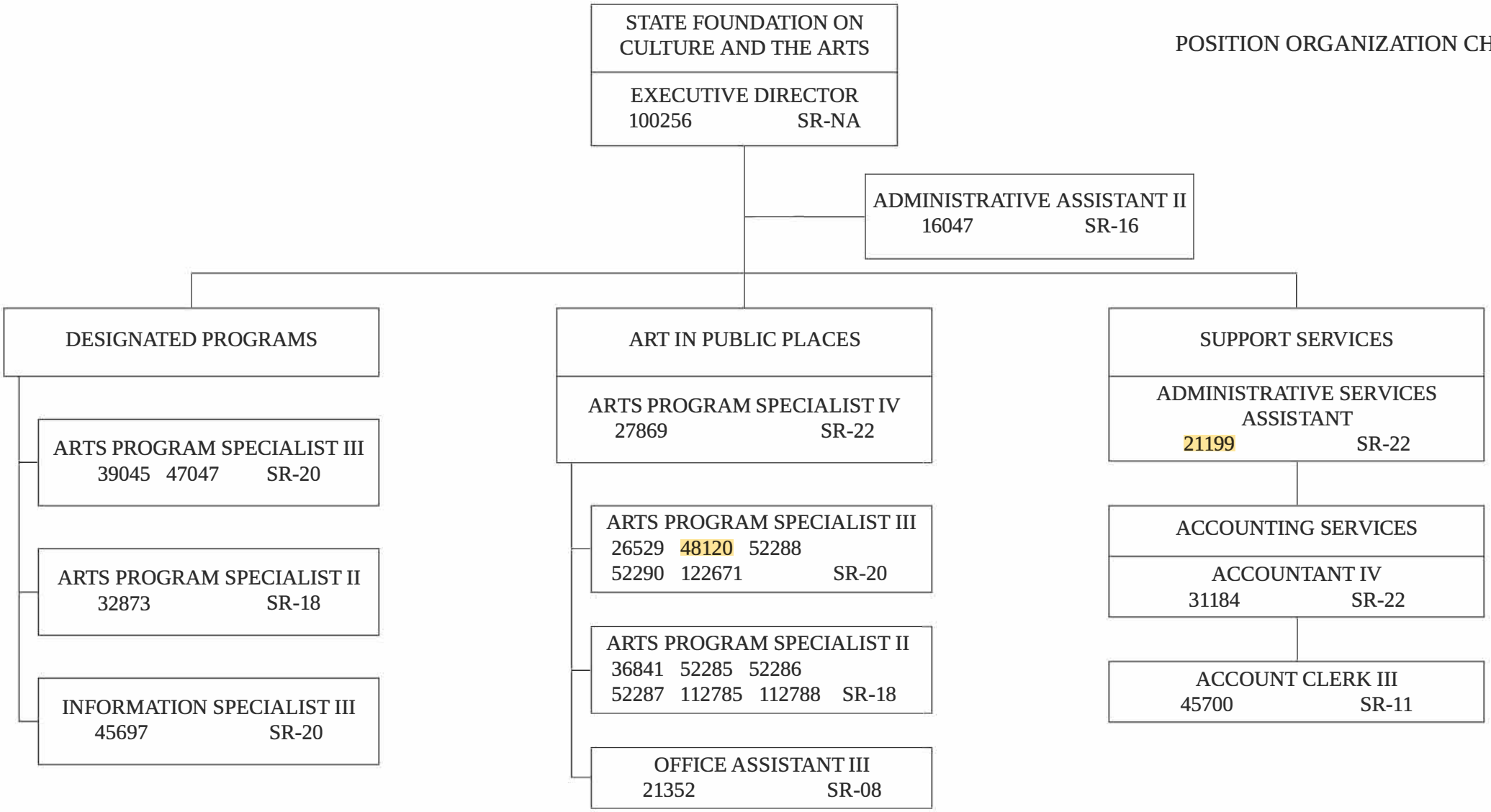
STATE OF HAWAII
DEPARTMENT OF ACCOUNTING AND GENERAL SERVICES
STATE FOUNDATION ON CULTURE AND THE ARTS

ORGANIZATION CHART



STATE OF HAWAII
DEPARTMENT OF ACCOUNTING AND GENERAL SERVICES
STATE FOUNDATION ON CULTURE AND THE ARTS

POSITION ORGANIZATION CHART



Hawai'i State Foundation on Culture and the Arts

FY2027 Budget Narrative

SFCA: FY2027 Budget Summary: Funding Allocations by Source

General (G-27- 033)	Works of Art Special Fund (S-27-319)	Federal - NEA (S-27-203)
\$ 14,373,679	\$5,635,150	\$964,738
TOTAL FY27 APPROPRIATION FOR SFCA		\$20,973,567

Note: SFCA General Funds for Programs and Operations are subject to a 10% restriction.

Note: Of the General Funds, \$9,500,000 are allocated as line items to Bishop Museum and The Friends of 'Iolani Palace.

FY2027 Line-Item Allocations (From: G-26-033)

Recipient	Total
Friends of 'Iolani Palace	\$2,000,000
Bishop Museum	\$7,500,000

Note: Both Friends of 'Iolani Palace and Bishop Museum will be subject to the General Fund 10% restrictions

Narrative

Fiscal Year 2027 Budget Overview

The Fiscal Year (FY) 2027 budget for the State Foundation on Culture and the Arts consists of the following appropriations:

- **General Fund:** \$14,373,679
- **Works of Art Special Fund:** \$5,635,150
- **National Endowment for the Arts (NEA) State Partnership Agreement (Federal Funds):** \$964,738

After accounting for the anticipated 10% General Fund restriction, payroll and fringe benefits, and the appropriations for Bishop Museum and Iolani Palace, the available General Fund operating budget is **\$2,402,458**. Within this amount, **\$170,000** is allocated to Arts and Healing initiatives and **\$300,000** is designated for the conservation of works of art.

After payroll and fringe benefits are applied, the available Federal Fund operating budget totals **\$593,095**. These funds include allocations of **\$25,000** for the Poetry Out Loud program, **\$50,000** for Arts and Health initiatives, and **\$20,000** for Folk and Traditional Arts

programming. Federal funds are not subject to the anticipated General Fund expenditure restriction.

The **Works of Art Special Fund** appropriation of **\$5,635,150** will support the acquisition of works of art and the commissioning of large-scale public artworks. As the State Art Collection continues to expand, acquisitions will require careful oversight to ensure that sufficient resources are available for the transportation, storage, conservation, and long-term stewardship of newly acquired works.

Personnel

The FY 2027 budget provides funding for **20 authorized positions**, including salaries, fringe benefits, and other employee-related costs.

General Fund Operations

General Fund appropriations support the Foundation's core operations, including:

- Hawaii State Art Museum operations and public programs;
- Transportation, registration, exhibition, storage, and conservation of the State Art Collection;
- Public information and communications;
- Arts education and interpretation programs, including Artists in the Schools;
- Community Grants and Outreach Initiatives
- General operating expenses; and
- Travel for Neighbor Island outreach, Board activities, and site visits.

Where allowable under applicable funding requirements, programs such as Artists in the Schools, Community Grants, and Public Information and Communications may be supported through both General Fund and Federal Fund appropriations.

Recommendation

The agency's priorities as determined by our strategic plan and the vision of our Executive Director and the Foundation's staff are represented in the preparation of this budget. We recommend approval of the budget as presented, with the provision that the Executive Director has the authority to make adjustments as needed. The Executive Director will notify the board if there are significant changes to the budget.

Fund: General - 033	
DESCRIPTION	TOTAL
General Admin	\$112,910.00
Therapeutic Arts Intervention	\$170,000.00
Public Information	\$11,751.00
Community Grants and Outreach	\$125,000.00
Poet Laureate	\$45,000.00
Folk and Traditional Arts Program Support	\$12,000.00
Registration and Collections Management	\$111,000.00
Arts Education Initiatives	\$78,300.00
Special Fund Assessment	\$15,973.00
Art Shipping, Transportation, Display	\$132,350.00
Capitol Modern Operations	\$1,161,223.00
Conservation (including KKCC)	\$300,000.00
Artists in the Schools	\$126,951.00
Bishop Museum	\$6,750,000.00
Iolani Palace	\$1,800,000.00
Personnel	\$1,983,854.00
Restricted Amount (10%)	\$1,437,367.00
	\$14,373,679.00

FUND: WORKS OF ART SPECIAL (319)		
OBJECT CODE	DESCRIPTION	TOTAL
S-27-319-000-901-501	RWA Acquisitions	\$635,150.00
S-27-319-000-901-601	Commissioned Works of Art	\$5,000,000.00
SPECIAL S-319	TOTAL	\$5,635,150.00

Fund: Federal - 203	
DESCRIPTION	TOTAL
Admin Operating	\$57,800.00
Arts and Health PD for Teaching Artists and TAI	\$50,000.00
Poetry Out Loud	\$25,000.00
Artists in the Schools	\$200,044.00
Folk and Traditional Arts Program and Support	\$28,000.00
NEA FTA	\$20,000.00
Public Information	\$11,751.00
Community Grants	\$175,500.00
Community Arts Regional Touring	\$25,000.00
Personnel	\$371,643.00
TOTAL	\$964,738.00

**Art in Public Places Program
Relocatable Works of Art
July 10, 2026**

Purchase Recommendations for the Art in Public Places Collection

**Viewpoints Gallery, "Celebration of Hawai'i 2026 - 21st Annual Invitational,"
curated exhibition (February 12, 2026 - April 30, 2026)**

AASC VACS: Inger Tully, Michael Takemoto
SFCA COMM: Jan Sato, Susana Browne
SFCA: Eli Baxter

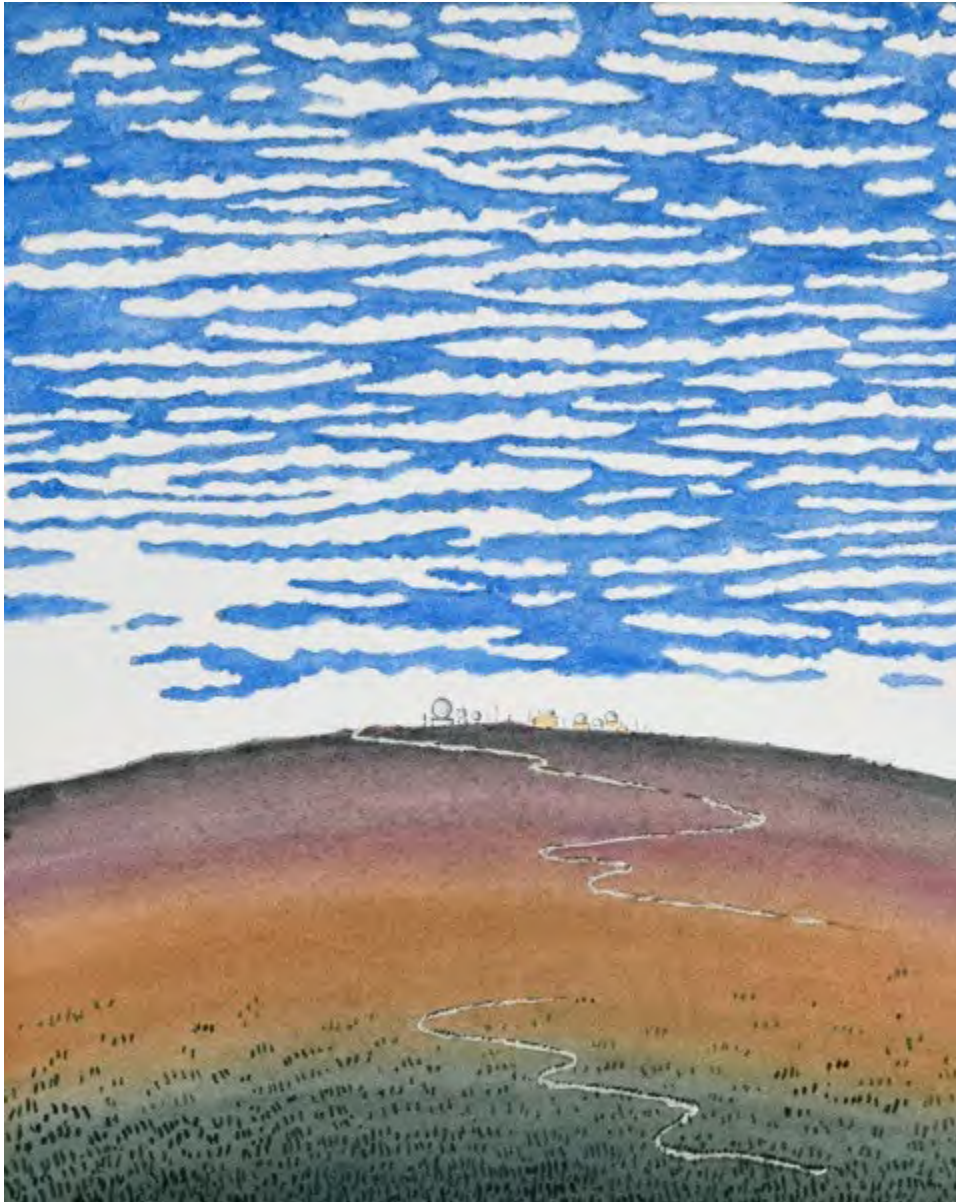
1. TANAHY, Dalani. 6140-26 "Loea"
hawaiian kapa and natural dyes, 2026, 52.25 x 23"
\$4,400.00



2. KELLER, Elizabeth. 6141-26 "Kabuki Geisha Remembers to Bring Her Own Bag to Mana," watercolor on paper mounted on wood, 2026, 10.875 x 8.875"
\$1,200.00



3. KELLER, Elizabeth. 6142-26 "Hokusai Visits Haleakala Summit and Observatory"
watercolor on paper mounted on wood, 2026, 11.25 x 9.25"
\$1,200.00



4. KELLER, Elizabeth. 6143-26 "Hiroshige Visits Kahului Harbor"
watercolor on paper mounted on wood, 2026, 10.875 x 8.875"
\$1,200.00



5. KELLER, Elizabeth. 6144-26 "Burned Again - No Reservation!"
watercolor on paper mounted on wood, 2026, 11.25 x 9.25"
\$1,200.00



6. KELLER, Elizabeth. 6145-26 "Kabuki Warrior on Koa Board on a Nukin' Coast Run"
watercolor on paper mounted on wood, 2026, 11.25 x 9.25"
\$1,200.00



7. KELLER, Elizabeth. 6146-26 "Samurai Ruckus at Nuka"
watercolor on paper mounted on wood, 2026, 11 x 14"
\$1,900.00



TOTAL

\$12,300.00

Maui Arts & Cultural Center, Capitol Modern, "Schaefer Portrait Challenge 2025," juried exhibition (January 2, 2026 - July 4, 2026)

AASC VACS: Maya Portner, Johnny Macas
SFCA: Kamakani Konia, Eli Baxter

1. STORM, Kathleen. 6150-26 "Nā Kūpuna o Lehua, Lehua's Ancestors"
acrylic on canvas, 2024, 40 x 30"
\$11,000.00



2. KUROKAWA, Kirk. 6151-26 "The Dojo"
oil on panel, 2024, 30 x 40"
\$7,700.00



3. MIZUMOTO, Patrick. 6152-26 "Companions"
oil on linen, 2024, 30 x 40"
\$6,500.00



TOTAL

\$25,200.00

Downtown Art Center, "Dance on the Edge of the Witches' Cauldron," curated exhibition (May 1, 2025 - May 30, 2025)

AASC VACS: Liz Train, Mary Mitsuda
SFCA COMM: Marcia Roberts-Deutsch
SFCA: Kamakani Konia, Eli Baxter

1. KĀNE, Linda. 6168-26 "Na Pupu O Kaho'olawe"
charcoal on paper, diptych, 2008, 62 x 42.625"
\$12,375.00



2. KĀNE, Linda. 6169-26 "The Fine-leaved Maile of Ko'iahi"
wood, feathers, 2008, 80 x 20 x 18"
\$9,000.00



3. HICKMAN, Pat. 6170-26 "Light Passage"
skin membrane (gut) molded over door hinges, 1995, 99 x 40 x 24"
\$15,000.00



4. HICKMAN, Pat. 6171-26 "Dragon Spike"
molded skin membrane (gut) spike shells, Chinese gold paper money, 2024, 96 x 24"
\$15,000.00



TOTAL

\$51,375.00

**Hawai'i Craftsmen, Downtown Art Center, "Fiber Hawai'i 2026," juried exhibition
(June 5, 2026 - June 27, 2026)**

AASC VACS: Katherine Love

SFCA COMM: Marcia Roberts-Deutsch

SFCA: Kamakani Konia, Shirley Lam, Eli Baxter

1. MCDONALD, Licia. 6175-26 "Shipped C.O.D."
weaving, mixed media, 2026, 24" x 24" x 24"
\$2,100.00



2. COPPINGS, Amber. 6176-26 "All the December Suns"
silk organza dyed with safflower, indigo, butterfly pea flowers, madder root, red
hibiscus, and cranberry hibiscus; thread, 2026, 44" x 39"
\$2,000.00



3. MIZUMOTO, Patrick. 6177-26 "Interwoven Systems"
mixed media; hand-carved basswood, oil paint, Belgian linen on wood panel, canvas
on wood panel, artist-made frame, 2026, 30.5" x 24"
\$8,000.00



TOTAL

\$12,100.00

State Foundation on Culture and the Arts
Art in Public Places
STAFF REPORT
July 10, 2026

REQUEST:

Approve recommended schedule for Acquisition Award Selection Committee (AASC) for September - October 2026.

FACTS:

Submitted requests:

1. Exhibition Title:

Hawai'i Craftsmen Annual Statewide Exhibition 2026

Exhibition Opening Date:

2026-09-04

Exhibition Closing Date:

2026-09-25

Location of Exhibition:

Downtown Art Center

Juried Exhibition Description:

Hawai'i's premier statewide juried exhibition – held annually since 1967 – features traditional and contemporary craft from across the state of Hawai'i. This year the exhibition will open on O'ahu and then travel to the Schaefer International Gallery in partnership with Maui Arts & Cultural Center.

This year's juror is Jonathan Yukio Clark, Director of Schaefer International Gallery at Maui Arts & Cultural Center.

<https://www.hawaiicraftsmen.org/ASE2026>

List percentage that artists receive from the sale of their works: 60%

2. Exhibition Title:

Mālama Wao Akua

Exhibition Opening Date:

2026-09-11

Exhibition Closing Date:

2026-11-06

Location of Exhibition:

Hui No'eau Visual Arts Center

2841 Baldwin Ave., Makawao, HI 96768

Juried Exhibition Description:

Hui No'ēau Visual Arts Center in collaboration with East Maui Watershed Partnership (EMWP) brings you Mālama Wao Akua (Caring for the Realm of the Gods) – a juried art exhibition celebrating the native species of Maui Nui (Maui, Lana'i, Moloka'i, Kaho'olawe). We invite Maui artists to explore our watersheds and use their creative talents to raise awareness about the importance of protecting native species. Selected artwork should be successful in sharing knowledge of the watersheds and native species with others in a meaningful way.

Emillia Noordhoek, Art Juror, is a sculptor, arts administrator, and community advocate with deep roots in Hawai'i. She is the chair of the 'Aha Hana Lima program through Hawai'i Craftsmen, a statewide craft organization dedicated to supporting the craft community across all of our islands. A co-founder of the Moloka'i Arts Center and co-founder and founding Executive Director of Sust'āinable Moloka'i, Emillia has spent decades working at the intersection of community, culture, and the environment.

Chris Brosius, Conversation Juror, came to Mauna Kahālāwai Watershed Partnership as the Program Manager in July 2004. He is originally from Pennsylvania and graduated from the University of Vermont with a B.S. in Natural Resource Management. Previous experiences have included work the Maui Forest Bird Recovery Project's habitat management program, Haleakala National Park's endangered species management, USGS's avian disease project on the Big Island as well as an assignment with National Geographic in Belize.

<https://www.huinoeau.com/exhibitions/2026/9/mlama-wao-akua>

List percentage that artists receive from the sale of their works:

50%

3. Exhibition Title:

Plantcestors (working title)

Exhibition Opening Date:

2026-09-18

Exhibition Closing Date:

2026-09-27

Location of Exhibition:

Kaiao Space Gallery, Honolulu

Curated Exhibition Description:

Who is your kumu? The polysemous word kumu in 'ōlelo Hawai'i can mean tree, reason, and source. It describes how deeply humans have relied on mea kanu (plants) not only to survive, but to express aspects of emotion, spirituality, and collectivity. Plants are our teachers and ancestors. *Plantcestors* is an exhibition of artworks and stories inspired by or created from important plants of Hawai'i, highlighting local artists who have a personal connection to certain mea kanu and their materiality, lifecycles, mo'olelo, or healing properties. Positioning this group exhibit here, the artworks curated for this show will focus on telling the stories of artists' intellectual, spiritual, and artistic genealogies through the plants they are in relationship with.

Names of Invited Artists:

Jordan Paguirigan

Noah Harders

Kamehanaokalā Taylor

Bon Moore

Aukai Joy

Rebecca Goldschmidt

Emily Kaliko Spencer

Shelby Sides

Nicole Maka'āhina'ālohilohi Jack

Lise Childers

Curated by Kano Watanabe, curator, artist and teacher.

List percentage that artists receive from the sale of their works: 70%

4. Exhibition Title:

Art Kauai 2026

Exhibition Opening Date:

2026-09-19

Exhibition Closing Date:

2026-10-23

Location of Exhibition:

Kauai Society of Artists Gallery at Kukui Grove Center, Lihue, HI

Juried Exhibition Description:

Art Kauai is an annual exhibition with over 40 years of tradition, celebrating the vibrant community of talented and hardworking artists on Kauai. Each year, a guest Juror reviews and selects works that demonstrate high level of skill, a unique artistic vision and a deep connection to the creativity inspired by the beautiful island of Kauai. This year's juror is curator and artist Katherine Love.

<https://www.kauaisocietyofartists.org/>

List percentage that artists receive from the sale of their works: 75%

5. Exhibition Title:

2026 Hawaii Watercolor Society Open Exhibition

Exhibition Opening Date:

2026-09-29

Exhibition Closing Date:

2026-10-24

Location of Exhibition:

Downtown Art Center, Honolulu

Juried Exhibition Description:

This exhibition highlights work in water media by artists working throughout the state. Artists working in other media are encouraged to experiment with water media and submit works alongside HWS members. This year's juror is artist Frank Eber.

www.hawaiewatercolorssociety.org

List percentage that artists receive from the sale of their works: 70%

6. Exhibition Title:

submerged and emergent

Exhibition Opening Date:

2026-10-10

Exhibition Closing Date:

2026-11-01

Location of Exhibition:

Commons Gallery at the University of Hawai'i at Mānoa

Curated Exhibition Description:

Bringing together emerging artists Kalani Axelrode and Vincent Bercasio, this exhibition explores how art can create space for slowing down in a time increasingly shaped by urgency and distraction. Working across new media, sculpture, and photography, the artists engage water and darkness to explore states where memory, relation, and perception remain in formation. Axelrode's interactive sculptural installation invites viewers into the oceanic depths of Hāmākuapoko, where ancestral memory, diasporic belonging, and queer kinship unfold. Bercasio's photographs of Kawainui fishpond, queer nightlife, and bodies at shore offer nighttime encounters that challenge familiar ways of seeing Hawai'i. Together, the works explore forms of memory, relation, and

place submerged beneath dominant perceptions of Hawai'i, yet emerging through sustained attention. The exhibition thus invites viewers to linger between submergence and emergence, remembrance and forgetting, certainty and uncertainty.

Names of Invited Artists:

Kalani Axelrode and Vincent Bercasio

Curated by Tiffany Beam, artist, teacher, curator.

List percentage that artists receive from the sale of their works: 70%

Kalani Axelrode artist website: <https://angeliqueaxelrode.com/>

Vincent Bercasio, artist bio for award: <https://hoakeasource.org/vincent-bercasio>

7. Exhibition Title:

Palolo 11-2

Exhibition Opening Date:

2026-10-15

Exhibition Closing Date:

2026-11-30

Location of Exhibition:

fishcake 307c kamani st

Curated Exhibition Description:

For the past year, a dedicated collective of 12 artists has been gathering every Sunday from 11:00 AM to 2:00PM at Maile's Hale in Pālolo. This weekly studio meet-up has served as a consistent creative sanctuary for the group to collaborate, share ideas, and work on their respective crafts. Now celebrating their one-year milestone, the members continue to sustain this vibrant, community-driven artistic routine deep in the valley each weekend.

Names of Invited Artists:

Mary Mitsuda

Debbie Young

Harinani Orme

Wendy Kim Messier

Leland Miyano

Nina Hagiwara

Lynette Roster

Marie Kodama

Amos Kotomori

Jinja Kim

George Woollard

Lonny Tomono

Curated by artist and educator Maile Yawata.
List percentage that artists receive from the sale of their works: 55%

RECOMMENDATION:

Staff recommend AASCs to be convened for all 7 AASC applications listed above.

Prepared by:
Elizabeth Baxter, Curator

date: July 10, 2026

Recommend:
c Approval Disapproval

Karen Ewald, Executive Director

Date

State Foundation on Culture and the Arts
Arts Education

STAFF REQUEST

July 10, 2026

REQUEST: Approval from the SFCA Board of Commissioners for the following:
Funding recommendations from the 2026-2027 Artists in the Schools Grants Panel.

FACTS:

Project Title: Artists in the Schools (AITS) Program 2026-2027

Project Staff: Danica Rosengren, Arts Program Specialist

Statute/Policy/Procedure: The AITS Program follows the Hawai'i Administrative Rules, Chapters 3-92 to 3-93 concerning panel and application administration.

What: Each public and charter school in the state can apply annually to the SFCA for a PreK-12 arts residency grant. Schools are required to use an artist from the SFCA Artistic Teaching Partners Roster. Roster information is updated annually. With no longer being able to use the Arts in Public Places fund to support residencies interpreting works of art in the collection, we had to make a few adjustments this year:

- In 2024, we were able to expand the applications to either be one year or two year grants. We decided this after a townhall which invited teaching artists, school administrators and teachers to provide feedback to the program. Because funding was more secure year to year, this was possible. With financial uncertainties, we shifted the funding length back to only one year grants.
- For at least the past eight years, there have been two types of Artists in the Schools grants- General AITS Grant, and Arts in Public Places AITS Grant. Because of the legislative shift for Arts in Public Places funds, we have entirely cut that grant type.
- This year, we invited teaching artists/arts organizations to apply to be on the roster at the same time as applying for the grant. We received two roster applications with this opening.

Grant Information

The Artists in the Schools (AITS) grant provides awards of up to **\$8,500** per school residency. This amount includes up to **\$500** in optional funding to support professional development for participating teachers, facilitated by the teaching artist as part of the residency.

The State Foundation on Culture and the Arts (SFCA) launched the FY 2026–2027 AITS application cycle in January 2025 through the GO Smart online grants system. A notification announcing the application period was emailed to all Hawai'i Department of Education (DOE) school principals and complex area superintendents, as well as all teaching artists on the Artistic Teaching Partners Roster. Application information was also shared through the DOE website, the

SFCA website, and outreach at conferences and events, including *Schools of the Future* and *E Ola Kākou*.

The original application deadline of **April 10, 2026**, was extended to **May 1, 2026**, in response to the Kona Low weather event to provide additional time for schools impacted by the storm.

Three two-year grant applications approved during the previous funding cycle will continue into the second year of funding during the 2026–2027 school year. In addition, **128 new applications** were submitted for FY 2026–2027 consideration.

SFCA conducted the grant review process virtually via Zoom for the sixth consecutive year, continuing to reduce administrative costs associated with printing, travel, and meeting expenses. To allow for more thorough discussion, the review process was expanded to two panel meetings, held on **June 24** and **June 26, 2026**, rather than a single condensed session. This format provided panelists with additional time to discuss applications in greater depth while ensuring all reviewers had access to the complete application pool throughout the deliberations. Having all applications available during the meetings enabled panelists to reference proposals in real time and contribute additional perspectives during discussions.

Since the 2008–2009 funding cycle, the Hawai‘i Community Foundation (HCF) has provided matching funds in support of the AITS program. HCF awards these matching funds directly to eligible Artistic Teaching Partner 501(c)(3) organizations working with selected AITS schools, strengthening the impact and reach of the program.

Why: The SFCA began administering the AITS Program in school year 2007-2008. Prior to that, the program was administered by the Hawai‘i Department of Education (DOE). Most elementary schools in Hawai‘i do not have arts specialists even though the arts are considered a core subject, hence most of the applications serve elementary grades. AITS offers residencies in dance, drama, music, literary arts and visual arts with highly qualified teaching artists. Under the SFCA, over 12,000 children and 500 teachers in over 100 schools are serviced each year.

When: AITS SY2026-2027 timeline

- Application launch – January 5, 2026
- Online application deadline (GO Smart) – May 1, 2026
- Panel meetings – June 24th and June 26th, 2026
- Implementation grant period – School Year 2026-2027
- Final reports due – 30 days after the last residency for the school or June 30, 2027, whichever is earliest.

Where: AITS residencies are statewide on 6 islands (see additional data attached).

Who: Panel prospects include individuals with a deep understanding of arts education and who reside on different islands. The following served on the 2026-2027 AITS panel:

- Alice Ka‘ahanui, Executive Director, Molokai Arts Center
- Ariel Gugudan, Associate Director of Learning and Engagement, Honolulu Museum of Art
- Dr. Amanda Smith, Assistant Professor of Literacy Education, University of Hawai‘i at Mānoa
- Elizabeth Lenz-Hill, Program Officer, Hawai‘i Community Foundation

- Laurie Rich, President, Youth Artists Hawai‘i
- Kelly McHugh-White, Public Art Specialist, Maui Art Corp
- Yvonne Manipon, Folk and Traditional Arts Specialist, State Foundation on Culture and the Arts
- Isabella O’Keefe, Executive Assistant, Liliuokalani Trust
- Una Chan, Arts Education Specialist, Hawai‘i Department of Education
- Kapena Alapai, Director, ‘Ōlina Pathways
- Elise vonDohlen, Arts and Culture Program Director, Hawai‘i Community Foundation
- Hoku Pavao, Co-Founder, Harbinger of Hidden Narratives, Archive for Health, Arts and Spirit
- Rebecca Rhapsody, Arts Education Specialist, Maui County
- Gaye Humphrey, Executive Director, Hawai‘i Arts Alliance
- Denise Karabinus, Director, Honolulu Printmakers
- Moira Pirsch, Co-Founder, Director of Strategic Illumination, Archive for Health, Arts and Spirit
- Donnie Cervantes, Co-Director, Aupuni Space

Commissioner Janet Sato facilitated the June 26th panel. Executive Director Karen Ewald facilitated the June 24th panel.

Staff: Danica Rosengren

How: 127 eligible grant applications were received and reviewed by the AITS grants panels, as one application was not eligible. **Three grants from last year's** application cycle for two-year grants (2025-2027) were already reviewed and approved. Six applications were not recommended for funding at this time.

Committed Funds - Year two of AITS 2025-2027 (3 applications)				
	FED	GEN	HCF	
		21,194	0	
Additional Request for 2024-2025/6 (121 eligible/panel approved applications)				
	FED+Gen		HCF	
	634,222		300,000	
Full amount request for 2026-2027 AITS				
	FED+Gen		HCF	
	655,416		300,000	

Including administrative fees, the total request for Artists in the Schools is \$720,957.60 to fund all eligible and panel-approved schools.

DISCUSSION:

This year's panel review continued the practice of conditionally approving applications that demonstrated strong potential but required minor revisions or clarification, with final funding contingent upon both satisfactory revisions and funding availability. Five applications were recommended for no funding this cycle, while two applications received conditional approval with recommended follow-up. During the panel meeting, reviewers first discussed applications

with the greatest variation in scoring, followed by applications panelists specifically requested to review, and then lower-ranked applications to determine funding recommendations based on available resources. Panelists were given the opportunity to adjust their scores following the discussion and had two additional days after the meeting to submit any revised scores. As in previous years, teaching artists and schools may request feedback on their applications, and panelists completed their comments with the understanding that applicants may receive their anonymous feedback.

Panelists recommended continuing to simplify and streamline the application by reducing redundant questions, improving the overall flow, and focusing prompts on the information most valuable for review. They emphasized elevating questions that demonstrate a deep understanding of the school community, student demographics, and place-based learning, suggesting that this criterion receive greater weight in both the application and scoring rubric.

Panelists also encouraged simplifying standards alignment by focusing on a limited number of key standards, emphasizing how they are integrated into activities rather than requiring lengthy lists, and exploring more user-friendly features such as drop-down selections or structured matrices that clearly connect standards, activities, and assessment. Additional recommendations included providing clearer applicant guidance through training and examples of strong applications; allowing optional supplemental materials, such as short videos or visual assets, to enhance storytelling without changing evaluation criteria; requesting adjustments to GoSmart for panel experience; and continuing outreach to expand participation while balancing limited funding and creating opportunities for both established and emerging artists and cultural organizations.

Final results:

- Panelists recommended that 122 applications be funded, with recommended follow up for two applications.

Applicant Name	Grant Requ	HCF	HCF Cumul	SFCA	SFCA Cumula	Base Score (w	PD Score	Note		
Waialae PCS	8500	0	0	8500	8500	90		Two year app already approved		
Kohala MS	4450	0	0	4450	12950	90		Two year app already approved		
Manoa Elementary	8244	0	0	8244	21194	90		Two year app already approved		
Prince Jonah Kuhio Elementary School	8500	0	0	8500	29694	83.5	10			
Honokaa High and Intermediate School	8447	0	0	8447	38141	83	10			
Ka Waihona o Ka Na'auao Public Charter School	8500	8500	8500	0	38141	82.5	10			
Kawaikini Public Charter School	6897	0	8500	6897	45038	82	10			
Keaau Middle School	8500	0	8500	8500	53538	81.5	10			
Maunaloa Elementary School	8090	8090	16590	0	53538	81.5	10			
Pukalani Elementary School	8250	8250	24840	0	53538	81.5	10			
Waipahu Intermediate School	5600	5600	30440	0	53538	81.5	N/A			
Hawaii Technology Academy, Kona PCS	8499	0	30440	8499	62037	81	10			
Hilo Intermediate School	8397	0	30440	8397	70434	81	10			
Kaunakakai Elementary School	8250	8250	38690	0	70434	81	8.5			
Puohala Elementary School	5625	5625	44315	0	70434	81	9			
Waimea Elementary School	5868	5868	50183	0	70434	81	9.5			
Aliiolani Elementary School	4160	4160	54343	0	70434	80.5	N/A			
Hanalei Elementary School	8500	0	54343	8500	78934	80.5	9.5			
Honaunau Elementary School	8500	8500	62843	0	78934	80.5	10			
Kealakehe Elementary School	8000	8000	70843	0	78934	80.5	N/A			
Kihei Elementary School	8100	0	70843	8100	87034	80.5	6.5			
Paauiolo Elem. and Inter School	7356	7356	78199	0	87034	80.5	10			
Princess Nahienaena Elementary School	8500	0	78199	8500	95534	80.5	8.5			
Washington Middle School	5354	0	78199	5354	100888	80.5	10			
Kaelepulu Elementary School	7695	7695	85894	0	100888	80	N/A			
Ke Kula 'o Samuel M. Kamakau Laboratory Public Charter School	8326	8326	94220	0	100888	80	10			
Pearl City Elementary School	6510	0	94220	6510	107398	80	N/A			
Pomaikai Elementary School	8500	8500	102720	0	107398	80	9.5			
Waianae Elementary School	4610	4610	107330	0	107398	80	8			
Haiku Elementary School	8250	8250	115580	0	107398	79.5	9			
Kaneohe Elementary School	8000	8000	123580	0	107398	79.5	N/A			
Lanai High & Elementary School	8000	8000	131580	0	107398	79.5	N/A			
Voyager Public Charter School	8440	8440	140020	0	107398	79.5	10			
Waihee Elementary School	8500	0	140020	8500	115898	79.5	8.5			

Applicant Name	Grant Requ	HCF	HCF Cumul	SFCA	SFCA Cumula	Base Score (w	PD Score	Note		
He'eia Elementary	7647	7647	147667	0	115898	79	8.5			
Honouliuli Middle School	8000	0	147667	8000	123898	79	9			
Mokapu Elementary School	5546	5546	153213	0	123898	79	N/A			
Alaka'i O Kaua'i Public Charter School (Middle)	8000	8000	161213	0	123898	78.5	N/A			
Hilo Union Elementary School	8500	8500	169713	0	123898	78.5	8.5			
Ka'ala Elementary School	8000	0	169713	8000	131898	78.5	N/A			
Kamaile Academy Public Charter School	8500	8500	178213	0	131898	78.5	9.5			
Kapaa Middle School	8500	0	178213	8500	140398	78.5	8.5			
Prince Jonah Kūhiō Kalaniana'ole Elementary School	8500	0	178213	8500	148898	78.5	9.5			
Queen Kaahumanu Elementary School	5450	5450	183663	0	148898	78.5	N/A			
Waiakea Intermediate School	8500	0	183663	8500	157398	78.3	N/A			
Kamalii Elementary School	8100	0	183663	8100	165498	78	9			
Kula Elementary School	8250	8250	191913	0	165498	78	10			
Lanakila Elementary School	8197	0	191913	8197	173695	78	9			
Lihikai Elementary School	8250	8250	200163	0	173695	78	10			
Mililani 'Ike Elementary	4188	4188	204351	0	173695	78	N/A			
Palolo Elementary School	8500	0	204351	8500	182195	78	10			
Samuel E Kalama Intermediate School	8000	0	204351	8000	190195	78	N/A			
Enchanted Lake Elementary School	8000	8000	212351	0	190195	77.5	N/A			
Iao Intermediate School	8496	0	212351	8496	198691	77.5	9			
Kaohao Public Charter School	8000	8000	220351	0	198691	77.5	N/A			
Kapolei Elementary School	8500	8500	228851	0	198691	77.5	10			
Moanalua Middle School	8500	0	228851	8500	207191	77.5	10			
Kahakai Elementary School	8500	8500	237351	0	207191	77	9			
Kahului Elementary School	8250	8250	245601	0	207191	77	10			
Kua O Ka La Public Charter School	7870	7870	253471	0	207191	77	9.5			
Hana Elementary School	8000	8000	261471	0	207191	76.5	N/A			
Lokelani Intermediate School	8500	8500	269971	0	207191	76.5	7			
Pahoa Elementary School	8500		269971	8500	215691	76.5	9			
Paia Elementary School	8000	8000	277971	0	215691	76.5	N/A			
Puu Kukui Elementary School	8250	8250	286221	0	215691	76.5	7			
Waiau Elementary School	5608	5608	291829	0	215691	76.5	7.5			
Wailuku Elementary School	8500	8500	300329	0	215691	76.5	10			
Kilohana Elementary School	8000	0	300329	8000	223691	76	2.5			

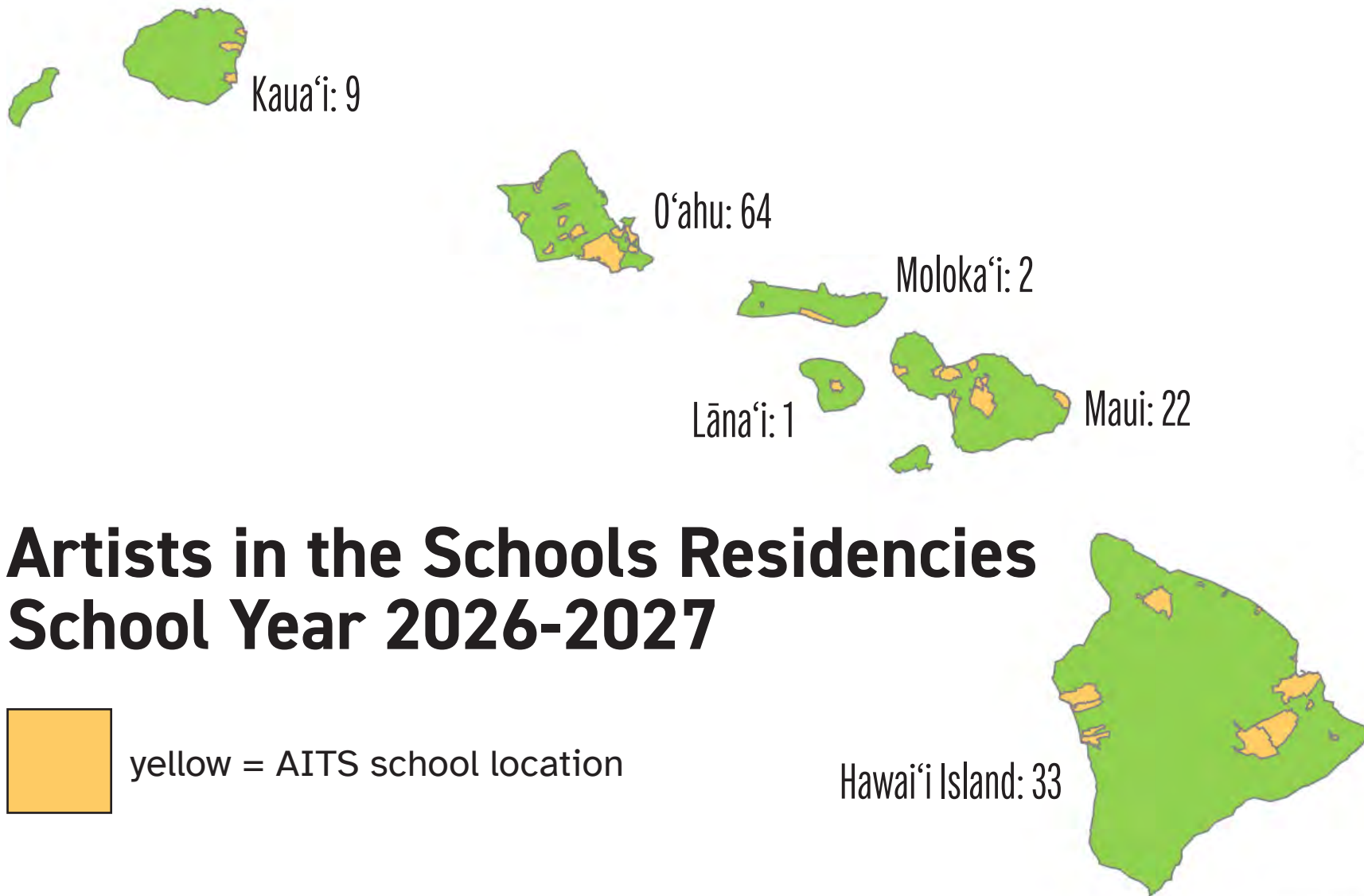
Applicant Name	Grant Requ	HCF	HCF Cumul	SFCA	SFCA Cumula	Base Score (w	PD Score	Note		
Lahainaluna High School	8000	0	300329	8000	231691	76	N/A			
Mililani Uka Elementary School	7240	0	300329	7240	238931	76	N/A			
Waimea Middle School	5000	0	300329	5000	243931	76	N/A			
Malama Honua Public Charter School	7700	0	300329	7700	251631	75.6	N/A			
Nanakuli Elementary School	5583	0	300329	5583	257214	75.5	8			
Waipahu High School	4550	0	300329	4550	261764	75.5	7			
Kalihi Elementary School	7800	0	300329	7800	269564	75.3	N/A			
The Volcano School of Arts and Sciences Public Charter School	8500	0	300329	8500	278064	75	9			
Mauka Lani Elementary School	6002	0	300329	6002	284066	75	9			
Kaimuki Middle School	6750	0	300329	6750	290816	75	8.5			
Nu`uanu Elementary School	8500	0	300329	8500	299316	75	7.5			
Kaaawa Elementary School	8000	0	300329	8000	307316	74.7	N/A			
Haleiwa Elementary School	7345	0	300329	7345	314661	74.5	8			
Holualoa Elementary School	8500	0	300329	8500	323161	74.5	9.5			
Laupahoehoe Public Charter School	8000	0	300329	8000	331161	74.5	N/A			
Stevenson Middle School	7695	0	300329	7695	338856	74.5	N/A			
Waiahole Elementary School	8500	0	300329	8500	347356	74.5	9			
Waialua Elementary School	8000	0	300329	8000	355356	74.5	N/A			
Aliamanu Elementary School	7800	0	300329	7800	363156	74.3	N/A			
Honoka'a Elementary School	8000	0	300329	8000	371156	74	N/A			
Innovations Public Charter School	8500	0	300329	8500	379656	74	9			
Kihei Charter School	8500	0	300329	8500	388156	74	9.5			
Noelani Elementary School	5540	0	300329	5540	393696	74	N/A			
Salt Lake Elementary School	8500	0	300329	8500	402196	74	8.5			
Waialae Public Charter School	5700	0	300329	5700	407896	74	8			
Blanche Pope Elementary School	7525	0	300329	7525	415421	73.5	8.5			
Konawaena Elementary School	6035	0	300329	6035	421456	73.5	5			
Waikiki Elementary School	8350	0	300329	8350	429806	73.5	6.5			
Hawaii School for the Deaf and the Blind	8500	0	300329	8500	438306	73	9			
Ala Wai Elementary School	8500	0	300329	8500	446806	73	10			
Pearl City High School	7999	0	300329	7999	454805	73	N/A			
Ha'aheo Elementary School	8500	0	300329	8500	463305	72.5	5			
Keonepoko	8500	0	300329	8500	471805	72.5	9			
Linapuni Elementary School	8500	0	300329	8500	480305	72.5	8			
Maemae Elementary School	5200	0	300329	5200	485505	72.5	N/A			

Hawai'i State Foundation on Culture and the Arts Artists in the Schools (AITS) Program Analysis 2026-2027



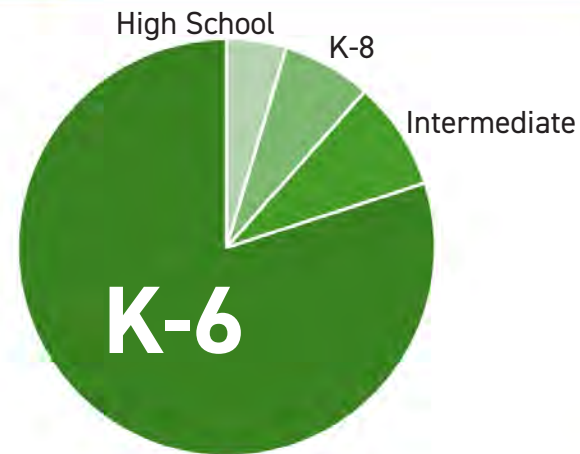
Quality arts experiences for Hawai'i's pre-K through 12 public and charter schools.

Artists in the Schools (AITS) arts residency grants provide engaging, creative, and fun learning experiences based on the Fine Arts standards for all grade levels, through residencies with qualified, trained teaching artists from the Artistic Teaching Partners (ATP) Roster. Many of these teaching artists integrate their art form with other core curriculum areas, such as language arts, math, social studies, and science, meeting both Fine Arts and other core standards.



Artists in the Schools 2026-2027

K-6:
majority of
AITS schools

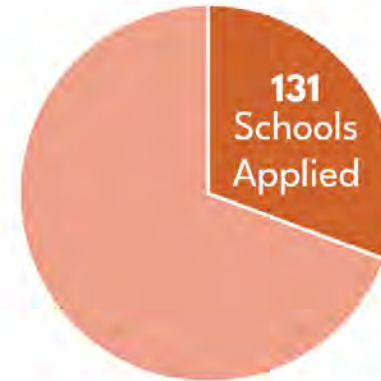


Schools choose the grade levels and classrooms for AITS residencies. Most of the schools applying serve Kindergarten through grade 6 students.

Artists in the Schools 2026-2027

**44% of eligible
schools applied**

296
Eligible
Schools



All State of Hawai'i Department of Education public and public charter schools are eligible to apply. For School Year 2026-2027, 44% of eligible schools applied. This is a drop from the previous year (four applications fewer).

Funding is not keeping up. For School Year 2025-2026, only 55 schools out of the 128 approved applications could be funded by the SFCA. 47 additional schools were funded by the Hawai'i Community Foundation.

Artists in the Schools 2026-2027

131 schools applied
125 schools recommended
78 schools funded

Current budget determines how many schools are funded.

The partnership with Hawai'i Community Foundation adds \$300,000, funding 40 schools.

For **2025-2026**, 135 schools applied and 102 were funded:

- 1 school withdrew their application
- 1 school closed
- 5 schools not recommended by AITS panel
- 26 schools could not be funded due to SFCA budget limit
- 47 schools funded by Hawai'i Community Foundation contribution of \$353,557

Artists in the Schools 2026-2027

If we can't fund them all, how do the panelists choose schools?

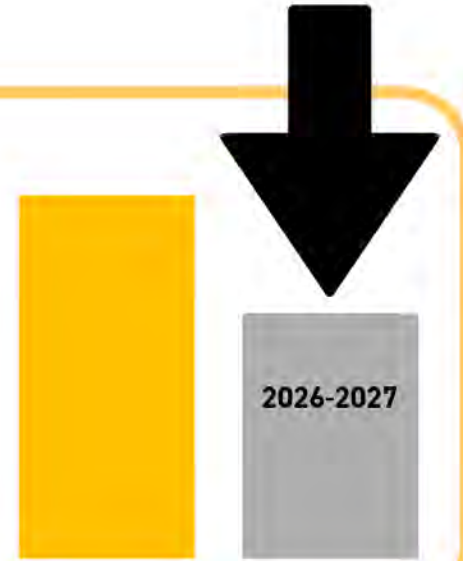
With limited funding available, application scores will determine which schools are selected by the AITS panelists. Scores are adjusted for **Title I** (supplemental federal funding for public schools with high concentrations of poverty), **rural** (includes all Neighbor Islands), and **Professional Development** (PD) for classroom teachers included in the residency.

This year, schools had to score 93.75% or higher to get grants. Many high-quality, panel-approved applications scoring in the low 90% range will not receive grants.

Artists in the Schools 2026-2027

Budget reduction

- Last year: \$483,987
- This year: \$326,995



This is the lowest funding rate for AITS in over a decade.

- **45%** of the requested budget
- **32%** reduction from last year
- **67%** of panel-approved applications receive funding

This level of funding is made possible by matching support from the Hawai'i Community Foundation. Without their support, SFCA would fund only 30% of approved applications.

Artists in the Schools 2026-2027

Student impact

15,330 students

9,985 students



If all panel-approved applications were funded, AITS would serve 15,330 students this year. Instead, the current allocation will serve only 9,985.

Schools without AITS lose access to residencies that have been shown to **improve attendance, increase student engagement** and **classroom participation**, and reduce classroom disruption.

Artists in the Schools 2026-2027

Long term impacts

damaging the effectiveness
and sustainability of
Artists in the Schools



- Reduces confidence in the grant process
- Challenges recruiting and retaining teaching artists
- Loss of documented student outcomes
- Erosion of trust
- Misalignment with SFCA Strategic Priorities

Artists in the Schools 2026-2027

2026 Legislature: HB 2437 Relating to Arts Education, increasing funds to AITS

HB 2437, Relating to Arts Education requested additional funding for the Artists in the Schools program, noting that the previous years funding was not enough to fund all qualified school applications. The bill was introduced by Rep. Jeanné Kapela.

The measure did **not** move forward. The additional funding was **not** secured.

2,459 bills were introduced in the 2026 session and 268 passed. Source: Legislative Reference Bureau, [Hawaii State Legislature, Regular Session of 2026 Legislative Statistics as of June 8, 2026](#) (PDF)